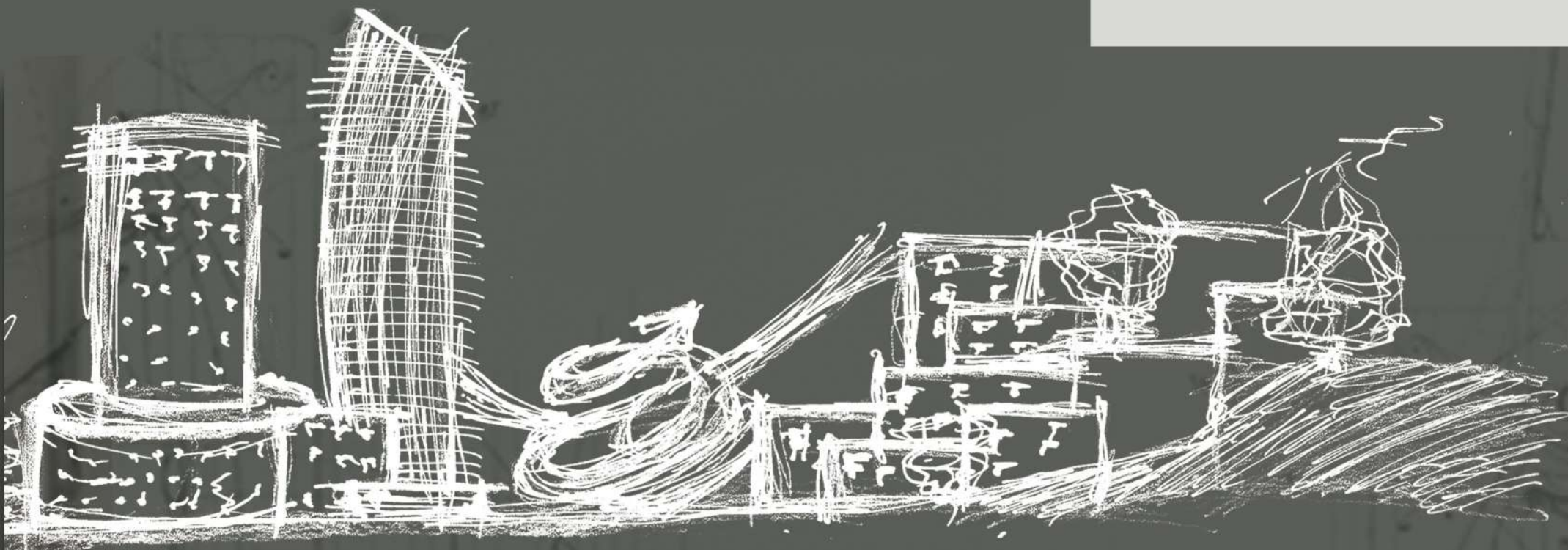




أهداف التصميم

- 1- **خلق مساحة ترفيهية** لشتى فئات المجتمع المحلي، بحيث ترضي رغبات الشباب وتوفر مساحة لعب آمنة للأطفال مع عائلاتهم، ولا ننسى كبار السن وذوي الاحتياجات الخاصة، من خلال توفير مناطق جلوس وتنقل مناسبة لهم.
- 2- توفير مناطق خضراء لإضفاء اللطافة على الأجواء العامة، وتوفير مناظر جمالية للزوار.
- 3- **التقليل من كلفة الصيانة** على المدى البعيد، من خلال استخدام مرافق دائمة في الحديقة.
- 4- خدمة رغبة أفراد المجتمع في حصولهم على **مساحة مصممة وآمنة للممارسة الرياضات** المختلفة كالركض والمشي وغيرها.
- 5- **التوجه نحو توعية المجتمع المحلي** بأهمية إيجاد حلول لمشاكل الطاقة، من خلال استخدام تقنيات توليد الطاقة المتجددة التي تم إضافتها لتوفير ما يلزم منها لإنارة المكان، بالإضافة الى تحويل الفائض لمدرسة سمير الرفاعي القريبة من الحديقة، الأمر الذي يساهم في تقليل قيمة فاتورة الكهرباء بمقدار 200 دينار شهرياً تقريباً، وبهكذا تكون الحديقة خادمة للمجتمع المحلي.
- 6- توفير **مساحة مناسبة لإقامة فعاليات مختلفة**، كمعارض فنية وعروض ترفيهية، وتكون هذه المساحة مناسبة لإستقبال فعاليات أسبوع عمان للتصميم الذي يقام سنوياً.

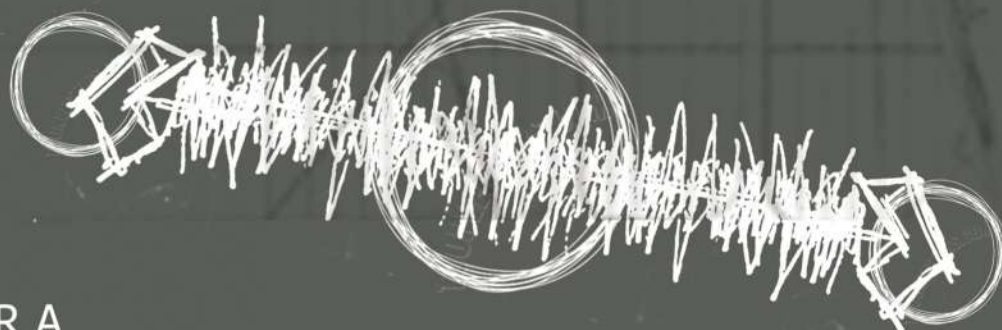


MODERN FUTURISTIC DESIGN
OFTEN CRITICIZED AS IM-
POSED

THE TRANSITION-
AL AREA BE-
TWEEN THE TWO
WHERE THE PARK
IS LOCATED

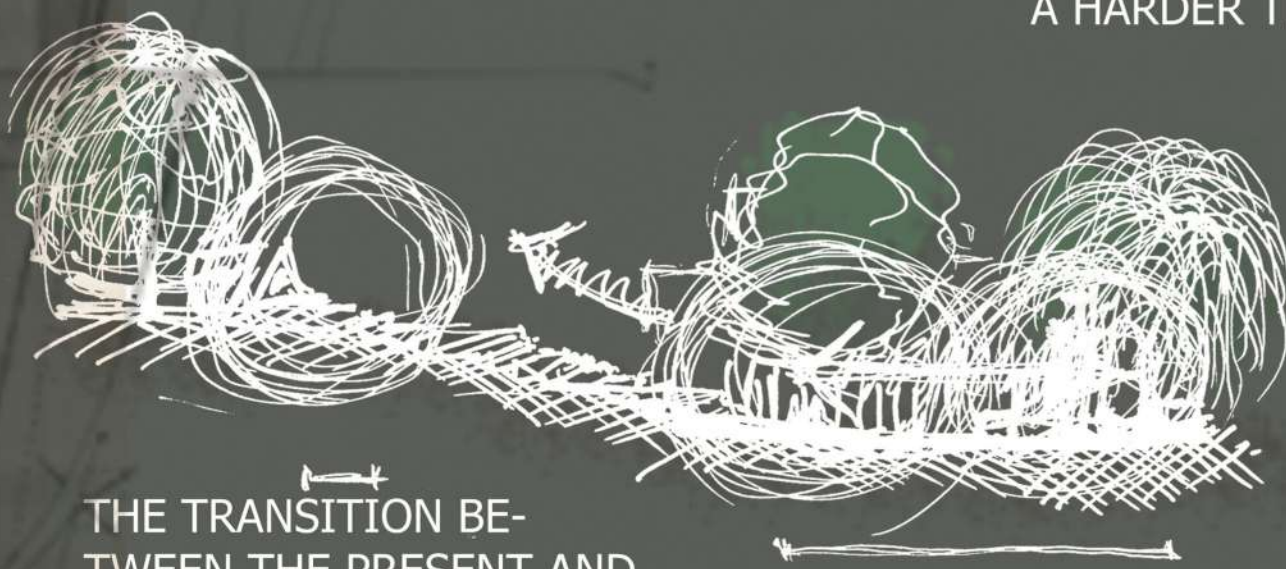
THE TRADITIONAL AREA REP-
RESENTED BY DOWNTOWN

THE MAIN CONCEPT IS TO USE THE SENSITIVE
LOCATION OF THE PARK AS A TRANSITIONAL OR A
LINKING POINT BETWEEN WHAT'S TRADITIONAL
REPRESENTED BY DOWNTOWN AMMAN , AND
WHAT IS NEW REPRESENTED BY THE NEW
MODERN PROJECTS TOWARDS THE THIRD
CIRCLE



STAIRS REPRESENTING
A HARDER TRANSITION

Nicking in the transition
representing a filter



THE TRANSITION BE-
TWEEN THE PRESENT AND
THE FUTURE ISN'T EASY
AS THE JOURNEY LOOKS
HARD SINCE IT HASN'T
BEGUN

THE TRANSITION BETWEEN THE PAST AND THE PRE-
SENT IS SOMEWHAT SMOOTH SINCE ALL THE HARD-
SHIPS HAS ALREADY PASSED AND THEY ALMOST FEEL
LIKE NOTHING

WHAT WE BASICALLY DID WAS
USING THE INTANGIBLE AXE
LINKING THE THE THIRD CIRCLE
AND DOWNTOWN

MAKING AN INVISIBLE TIME
LINE WITH THREE MAIN NODES
THE PAST THE PRESENT AND
THE FUTURE



CONCEPT

THE PAST IDENTIFIES WITH IT'S QUIET NATURE SINCE EVERYTHING ALREADY HAPPENED AND REPRESENTED BY THE QUIET SITTING AREA WHERE THE USER CAN READ OR JUST THINK QUIETLY.

THE MIDDLE NODE REPRESENTING THE TRANSITION BETWEEN THE PAST AND THE FUTURE AS SOME PEOPLE MAY CHOOSE TO LIVE IN THE PAST THE AREA

THE FUTURE REPRESENTED BY THE TARGETED USER OF THE LAST NODE BEING THE YOUTH SKATE AREA THE OPEN THEATER AND THE CHILDREN'S PLAY AREA

THE QUIET AREA HAS THE MINIMUM BUILT DENSITY AS SHADING IS PURELY PROVIDED POORLY BY TREES WHEREAS THE DENSITY INCREASES AS WE MOVE ALONG THE INTANGIBLE AXE , AS MORE SHELTERS AND ACTIVITIES



THOUGH THE PAST , PRESENT AND THE FUTURE SEEM LIKE THREE DIFFERENT CONCEPTS WITH DIFFERENT CHARACTERISTICS, THEY WERE ALWAYS CONNECTED AFFECTING EACH OTHER , THE PAST FEEDING THE PRESENT MAKING US WHO WE ARE TODAY WHILE THE FUTURE DEPENDS ON WHAT WE DO IN THE PRESENT .

WE ASPIRE TO CREATE A PLACE BY WHICH THE AREA IDENTIFIES , A GATHERING SPOT FOR ALL AMMANIES ALIKE YOUNG OLD RICH AND POOR , A PARK NOT ONLY SERVING THE LOCAL COMMUNITY BUT ALL OF AMMAN , REMINDING AMMANIES THAT THE ROOTS OF TH E PAST IS WHERE WE ALL START



Sameer AlRifai Park



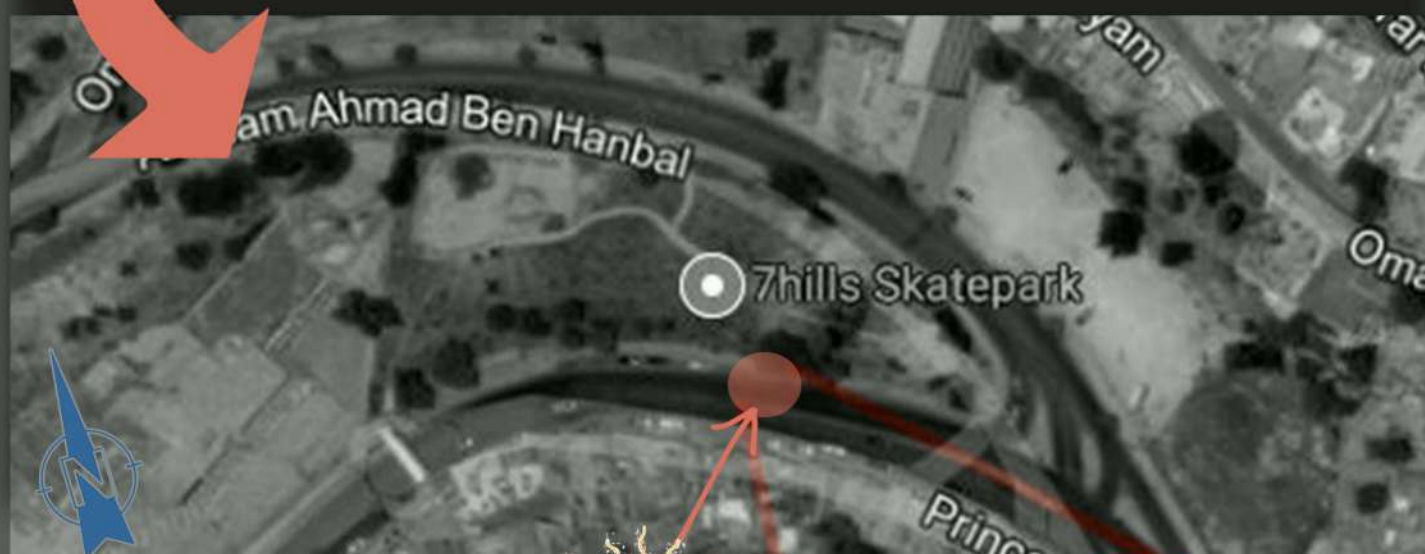
Site Analysis

The diagram shows the sun path in the site of the park. This helps understanding the zones that need sheltering by different techniques. Trees, Wooden and solar panels were used in the design to provide suitable shaded areas. On the other hand, Solar panels were exposed to the west to provide the maximum amount of saved heat.



Trees Position

To protect the park areas from the strong sun that comes from the south in the middle of the day, trees were planted on the same direction to provide coolness to the air and give shading on ground, the thing that reduces heat degree.

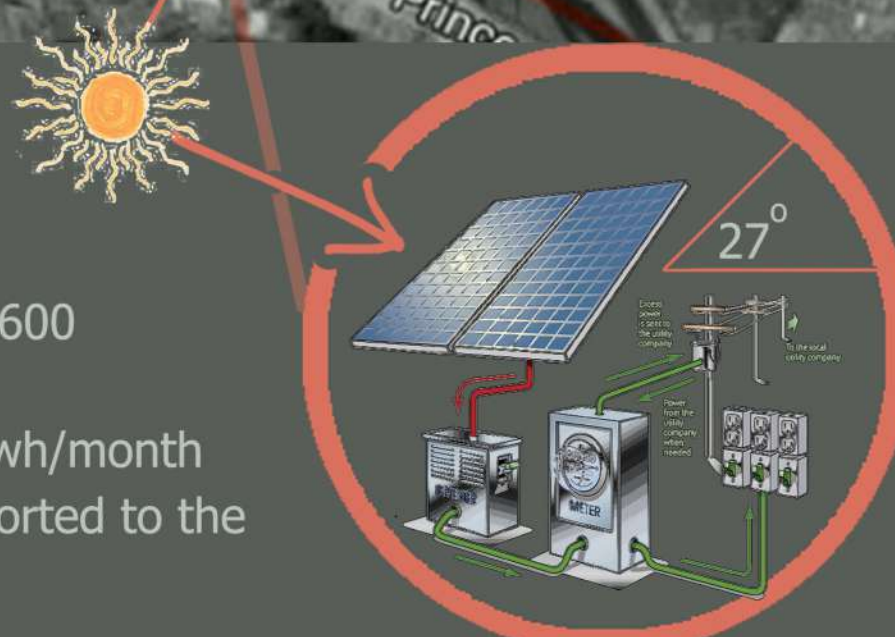


Solar Panels

For the same reason of adding trees on the south direction, solar panels were also added. Solar panels will provide the park with the needed energy and transform the rest of it to Sameer Alrifai school, the thing that reduces the electricity bill of the school by 200 JDs monthly.

System Info.

No. of used panels=36
 System size=11.52 KW
 Covers Consumption= 1600 Kwh/month
 Park's needed load=1 Kwh/month
 1599 Kwh will be transported to the school.



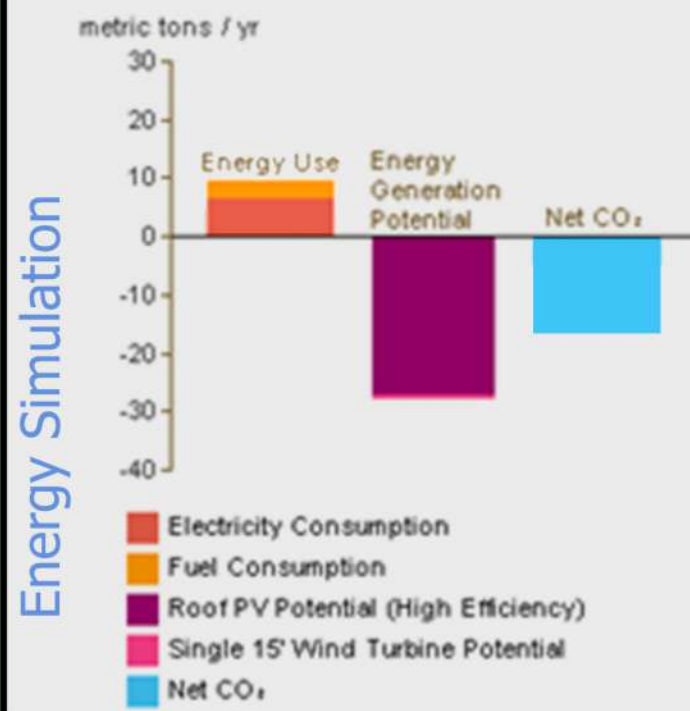


Sameer AlRifai Park



Rendered Plan
1:500

Rendered Plan shows the material that were used for the design, in addition to the trees types and colors with their sizes, and how they affect the experience of the users by giving the spaces mixed colors.



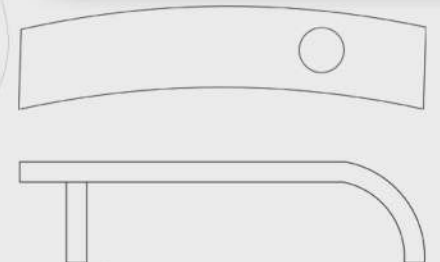
as stated before the park is able to produce energy this energy can be used to help the nearby school or even become a charging station for electric cars



During the day, they use solar energy to charge a battery, and at night, or when it's too dark to charge the battery, the battery runs a light. Besides not needing to pay for power for these lights, they have the advantages of coming on automatically when it gets dark and not requiring any wiring.



Built in Seats



The Built in Seats need less maintenance and give more natural theme

AutoCad Plan
1:500

Levels have been carefully studied to reduce human influence on natural topography when making the new design. creating different leveled spaces in the garden creating better experience.

Sameer AlRifai Park



Entrance was designed to work with the overall lines, it serves as a shelter that provides shading, and gives a good definition for the park. Seven Hills logo and the name of the park were added to the entrance.

Musical pipes node

A receptional and transitional node between heavy activities areas and light activities area, representing a point of harmony.



Musical pipes with different thicknesses to give different sound notes when one hits them.



Seven Hills Skate Park

Tree Types

Different types of trees have been used to serve the design.

All tree types that have been used are suitable to live naturally in Jordan environment.

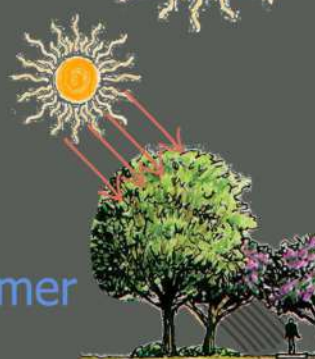
On the south direction of the park, a lot of deciduous trees have been used to allow sun rays enter the park in the winter, while in summer they give shading.



Winter



Summer



Maple Tree/Evergreen



Linden Tree/Deciduous



Pine Tree/Evergreen



Azalea Flower/Evergreen



Prunus Tree/Deciduous



Aspen Tree/Evergreen



Weeping Willow/Evergreen



Ivy Hedge Plant/Evergreen

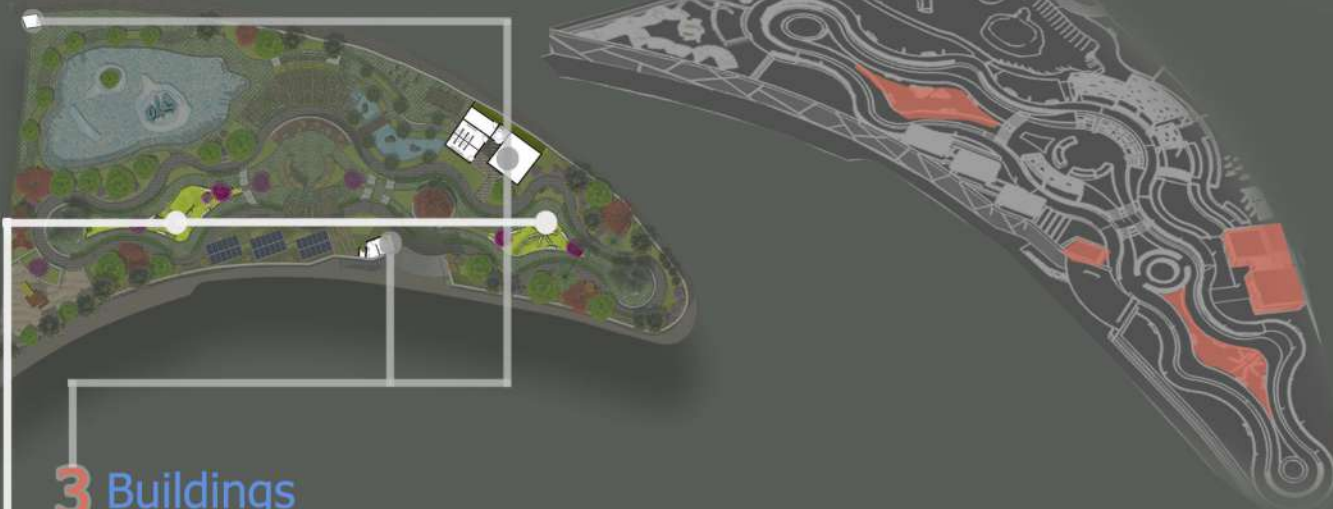


Jacaranda/Deciduous



Crepe Myrtle/Deciduous

VA Sameer AlRifai Park



3 Buildings

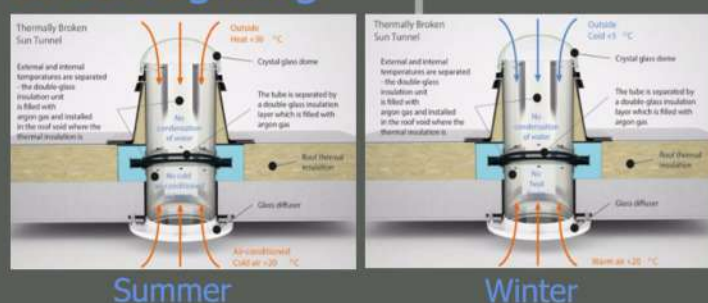
5 Buildings were used in the design:

- 1-W.C.s for both women and men (Already Exist).
- 2-W.C. for handicapped people.
- 3-Storage for gardening equipments.
- 4-Electricity generator (Already Exist).
- 5-Prefabricated Caravan for borrowing skate boards.

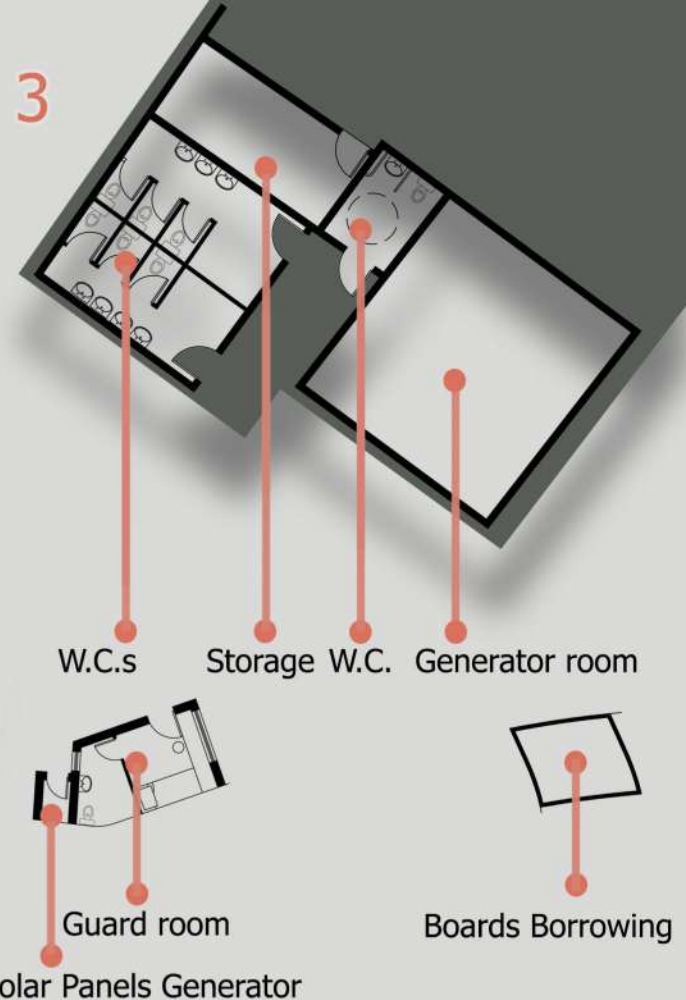
Section and Elevation



Green Lighting



Solar Tunnels that allow the sun light to enter buildings without heat transmission in Summer or in Winter



4 Monuments

Two monuments were designed in the park:

- 1- Amman Seven Hills monument.
- 2- Skate Board Seven Hills monument.

- The first monument expresses Amman's Seven Hills, each part of it represents one of the hills.
- The second monument expresses the logo of the seven hills skate board.

To enhance the experience for users with the monuments, natural paths were created through them.





Sameer AlRifai Park



Zone 1

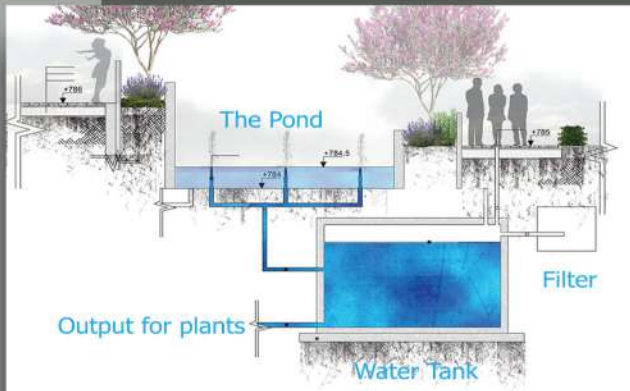
Contains calm spaces which is suitable for people who come to relax, to read and to draw, it's highly suitable for old people who come to meet each other as well, away from young people activities which may be noisy for some people.

Zone 1

A circular seat around the weeping willow, away from the noisy areas.

Zone 2

The Pond is supplied by the gray water that comes from the sinks in W.C.s after it passes a filtering system to make it ready for the pond and plants.



Zone 2

Contains different areas:
A Pond
An Outside gym
A Theater
A Gallery
A Sitting Sheltered area
A Skate Park



The areas are interactive and opened where users can practice different kind of activities especially suitable for young adults.

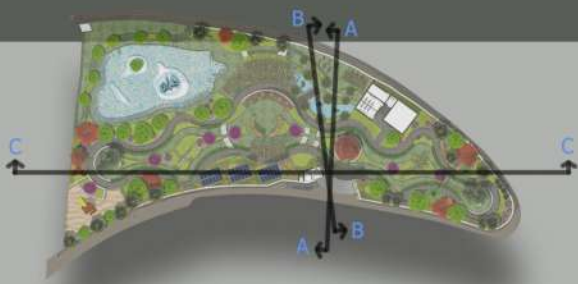




A designed area for children to enjoy their time by playing different kind of games.



path consisting of 70% green area and 30% natural cut stone this type of flooring is highly permeable allowing rain water to be naturally drained and harvested



Cross Sections









ملخص موجز لجدول التنفيذ ضمن 6 أشهر

البرنامج الزمني :

مدة التنفيذ المقترحة 6 أشهر أو 180 يوم عمل، يخصم من المدة الأيام الماطرة والأعياد والعطل الرسمية.

- 1- تجهيز الموقع : 7 أيام (أسبوعان من تاريخ المباشرة على أن تحسب من مدة التنفيذ)
- 2- حفريات متنوعة بالموقع ككل : 7 أيام
- 3- طمم متنوع بالموقع : 10 أيام
- 4- صب خرسانة نظافة في الموقع : 5 أيام
- 5- صب باطون مسلح (قواعد وأساسات بين طوبارين) : 15 يوم
- 6- إنشاء بوابة الحديقة والصروح في الموقع : 40 يوم
- 7- تجديد المباني القائمة وإضافة مبنى بمساحة 24 م² : 20 يوم
- 8- إنشاء مدرج و أحواض نباتات وأدراج مختلفة في الموقع بالإضافة الى البركة : 50 يوم
- 9- تركيب المقاعد الحجرية والمظليات الخشبية والدرابزين : 26 يوم