



6 Bradshaw Lane, Mawdesley, Ormskirk L40 3SE

Price Guide £335,000



A three bedroom semi detached true bungalow requiring upgrade and modernisation and offering potential for extension. Gardens to front and rear which are not overlooked, single garage and ample parking space. NO CHAIN.



ACCOMMODATION COMPRISES:

ENTRANCE PORCH

Side entrance door to Entrance Porch and glazed door to:

ENTRANCE HALL

LOUNGE

Double glazed window to front. Multi fuel burning cast iron stove set on stone hearth with decorative wood fireplace surround, and back boiler servicing the hot water system. Sliding door to:

KITCHEN

Double glazed window and exit door to rear. Double drainer sink unit. Electric cooker point and plumbed for automatic washing machine. Radiator.

INNER HALLWAY

Double glazed window to side. Radiator. Access to loft.

BEDROOM 1

Double glazed window to front. Radiator.

BEDROOM 2

Double glazed window to rear. Radiator

BEDROOM 3

Double glazed window to side. Radiator.

BATHROOM

Double glazed window to side. Fitted with a walk in shower, pedestal wash hand basin and low level w.c. Radiator.

FRONT

To the front of the property is a lawned garden with mature shrub and flower borders. A side driveway leads to the single detached garage.

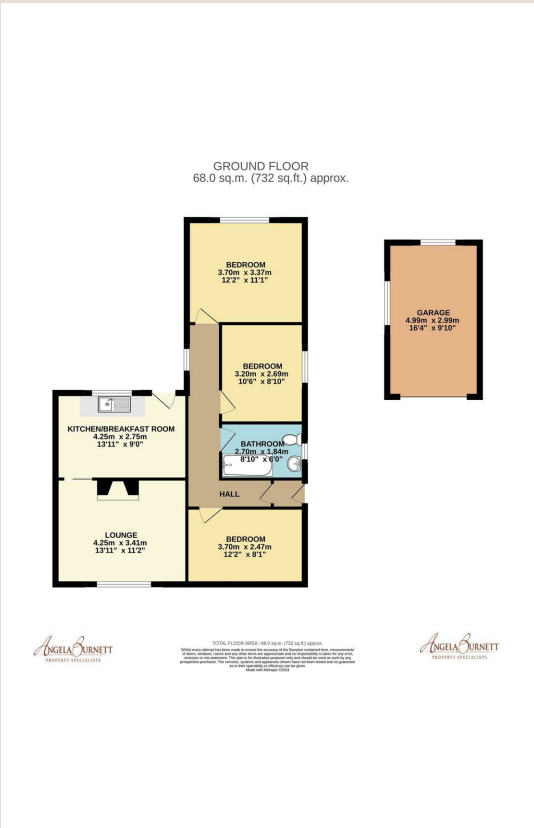
REAR

To the immediate rear of the property is a paved patio leading to the lawned garden. There is a wooden shed and greenhouse set on a raised gravelled base.

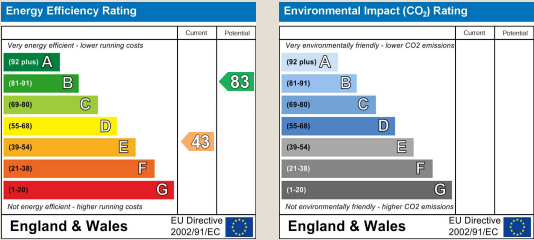
Area Map



Floor Plans



Energy Efficiency Graph



Property Specialists

Blacksmith's Barn Hall Lane, Mawdesley, Lancashire, L40 2QY Telephone: 01704 821393
Email: sales@angelaburnett.com www.angelaburnett.com

These particulars, whilst believed to be accurate are set out as a general outline only for guidance and do not constitute any part of an offer or contract. Intending purchasers should not rely on them as statements of representation of fact, but must satisfy themselves by inspection or otherwise as to their accuracy. No person in this firms employment has the authority to make or give any representation or warranty in respect of the property.