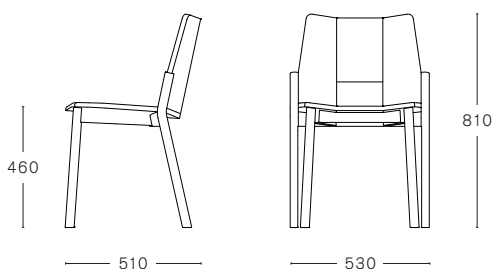


**TRONCO CHAIR**

design by **SAM HECHT / INDUSTRIAL FACILITY**



**TECHNICAL INFORMATION**

STACKABLE

STACKABLE ON DOLLY

MAX. PER BOX  
2 CHAIRS

GROSS WEIGHT  
CA. kg 16,00

VOLUME  
0,32 m<sup>3</sup>

BOX SIZE  
620 x 560 x 920 mm

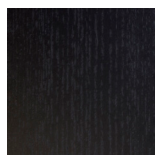


**FINISHINGS**

ASH



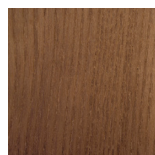
NATURAL



BLACK



WHITE



WALNUT STAINED



CHESTNUT STAINED



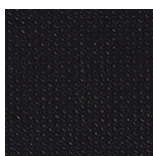
RED



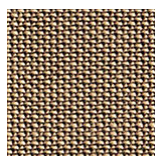
GREEN

FABRIC UPHOLSTERY

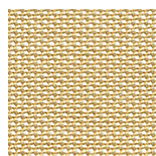
ROHI TOPIA



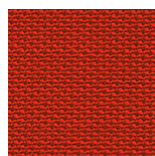
EBONY



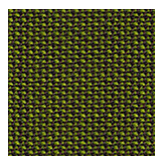
WALNUT



MOON



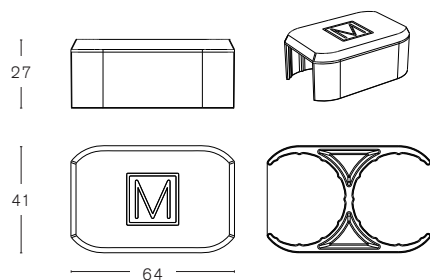
CHILI



PALM

## TRONCO CONNECTOR

design by SAM HECHT / INDUSTRIAL FACILITY



### TECHNICAL INFORMATION

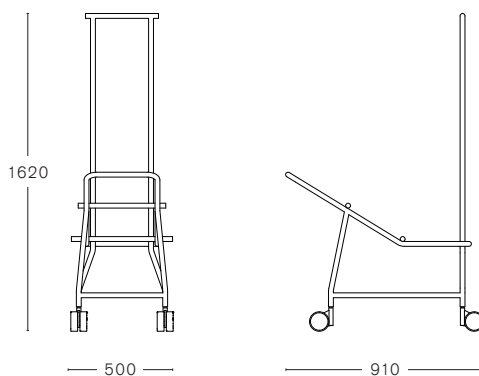
ROW CONNECTOR



PLASTIC PA6 + 30% GLASS FIBER

GROSS WEIGHT  
CA. g 30

## TRONCO DOLLY



### TECHNICAL INFORMATION

MAX. PER BOX	GROSS WEIGHT	VOLUME	BOX SIZE
1 DOLLY	CA. kg 18,00	1,00 m <sup>3</sup>	1000 × 600 × 1650 mm

### FINISHINGS

MAT PLASTIC

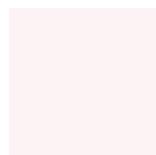


RED - RAL 3020



BLACK - RAL 8022

POWDER COATED METAL



WHITE



BLACK