

Elbow soft tissue injury – discharge advice

Information for patients

During your visit to the emergency department, you were advised that you have a soft tissue injury to the elbow.

This leaflet answers frequently asked questions about elbow soft tissue injuries.

What is an elbow soft tissue injury?

It is an injury to the ligaments or other soft tissues around your elbow.

How long does it take to recover?

This type of injury usually heals without any problems with time and use. Symptoms are usually minor, but can take between three and six weeks to subside.

A sling may be provided to hold your elbow in a comfortable position. You should only wear this for a few days unless advised otherwise.

A recovery plan has been provided below for you to follow:

Time since injury	Recovery plan
24 hours	<p>Try to rest your arm in the sling. A cold pack (ice pack or frozen peas wrapped in a damp towel) can provide short term pain relief. Apply this to the sore area for up to 15 minutes, every three to four hours, and ensure the ice is never in direct contact with your skin.</p> <p>Please follow the advice on pain relief given by the clinician you saw in the emergency department. If you need further advice please ask your local pharmacist or GP.</p>
1-10 days	<p>Stop using the sling as you feel able to. Start the 'elbow range of movement exercises' described below within your pain limits.</p>
10 days to 3 weeks	<p>By now you should be returning to your normal level of activity. You might still feel some discomfort with higher level activities.</p> <p>If you experience a significant increase in pain and/or swelling you will need to reduce your activity levels and gradually increase these over a longer period of time.</p>

Early movement of your elbow is important to reduce stiffness. Follow the exercises below within your pain limits. Forcible stretching is unnecessary and is likely to cause pain and delay your recovery.

Exercises to follow

Please note, the number of times you need to carry out each exercise is included as a guide only. If you experience a significant amount of pain while carrying them out, you should reduce the number of times you do each exercise, and gradually increase the amount during your recovery.

Elbow range of movement exercises

Using your injured arm, repeat each exercise 10 times, three to four times a day.

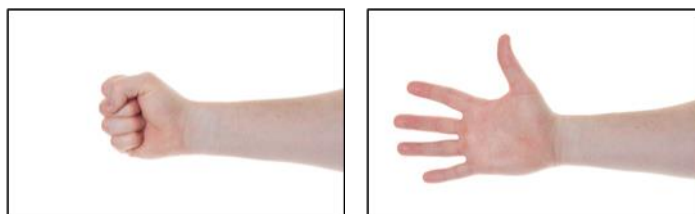
1. Bend and straighten your elbow.



2. Keep your elbow by your side and turn the palm of your hand up then down.



3. Open and close your fist.



Return to sport

You should be able to use the arm in normal day-to-day activities pain-free before you consider returning to sport. If they are unable to do this or need further guidance, please see your GP and ask for a physiotherapy referral.

Return to driving

You should be able to perform a full emergency stop confidently and pain-free before you consider driving again.

What happens next?

We do not routinely follow up patients with this type of injury as it usually heals well. However, if you are still experiencing significant symptoms after six weeks, please contact the virtual fracture clinic at the hospital you first visited. This clinic is run by a team of physiotherapists and orthopaedic doctors who can review your scans and notes to provide you with the further information or support you may need. If appropriate, they will make an appointment for you to be seen face-to-face in a fracture clinic.

Contact details

Barnet Hospital, Chase Farm Hospital, Finchley Memorial Hospital, Edgware Community Hospital:

- Telephone: 020 8216 4445 (9am to midday, Monday to Friday)
- Email: RF-TR.barnethospitalvfc@nhs.net

Royal Free Hospital:

- Telephone: 020 7472 6222 (9am to midday, Monday to Friday, a voicemail message can be left outside of these hours)
- Email: RF-TR.royalfreehospitalvfc@nhs.net

Acknowledgement and references

We would like to thank Glasgow Royal Infirmary and Leeds Teaching Hospitals for allowing us to reproduce part of their leaflets. If you require a full list of references for this leaflet please email: RF-TR.royalfreehospitalvfc@nhs.net or RF-TR.barnethospitalvfc@nhs.net.

More information

For more information about the virtual fracture clinic service at the Royal Free London, please visit our website: www.royalfree.nhs.uk/services/services-a-z/trauma-and-orthopaedics/virtual-fracture-clinic/

Your feedback

If you have any feedback on this leaflet please email: rf.communications@nhs.net

Alternative formats

This leaflet is also available in large print. If you need this leaflet in another format – for example Braille, a language other than English or audio – please speak to a member of staff.

© Royal Free London NHS Foundation Trust
Service: Virtual fracture clinic, trauma and orthopaedic service
Version number: 1
Approval date: August 2019
Review date: August 2021
www.royalfree.nhs.uk

