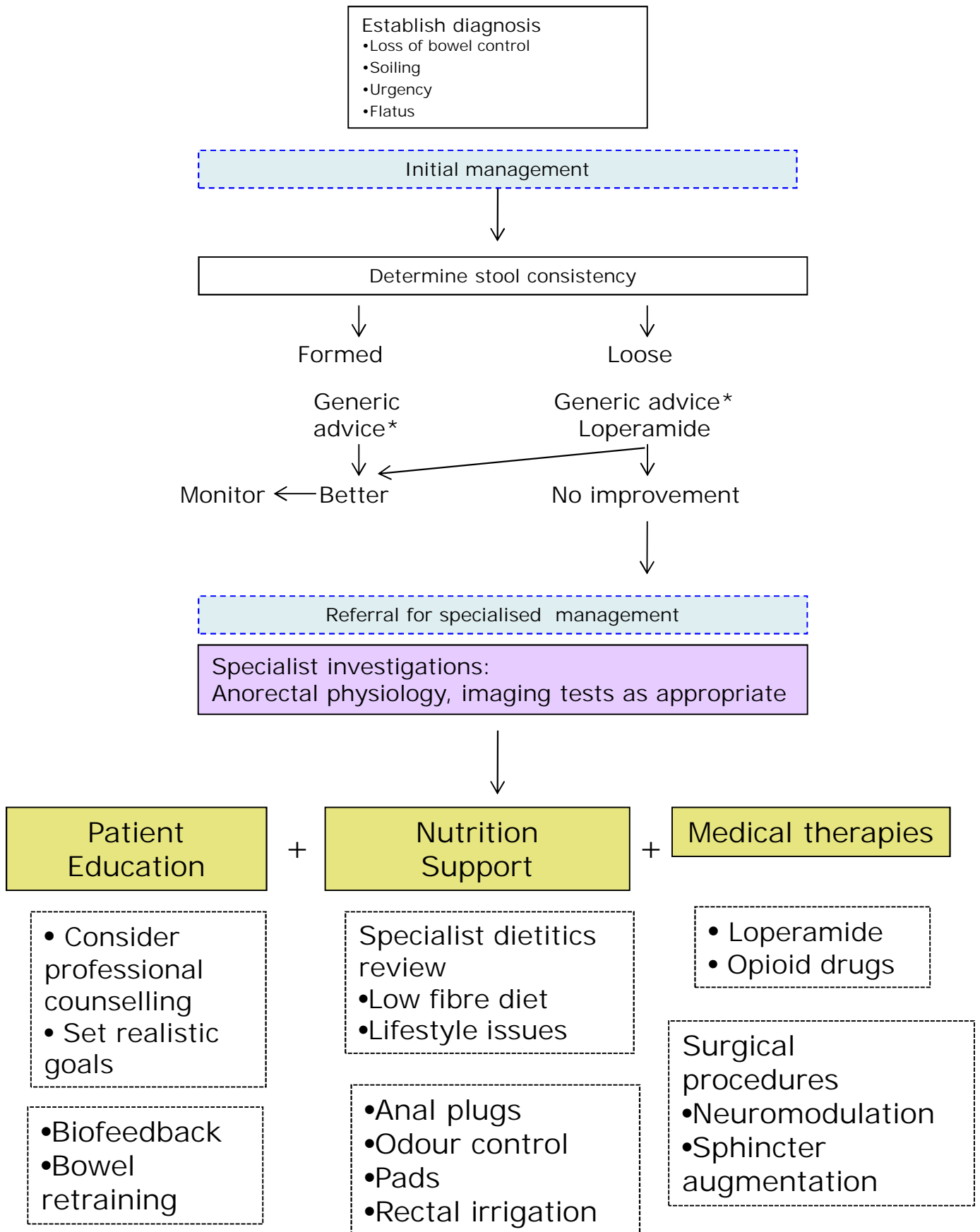


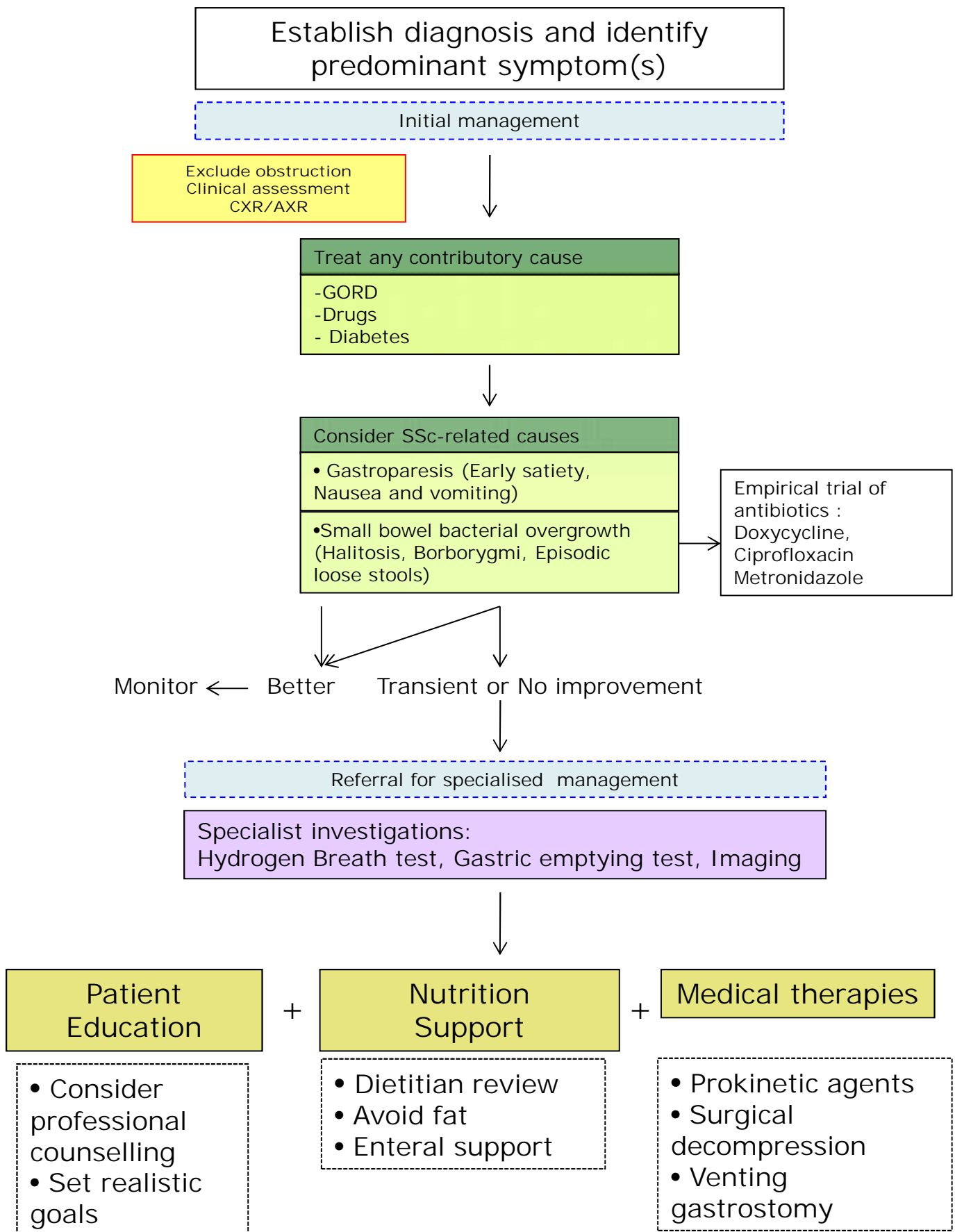
Clinical problems related to GI involvement in SSc

- Incontinence
- Abdominal pain/Distension
- Gastro-oesophageal
- Diarrhoea
- Weight loss/Nutritional Issues
- Constipation

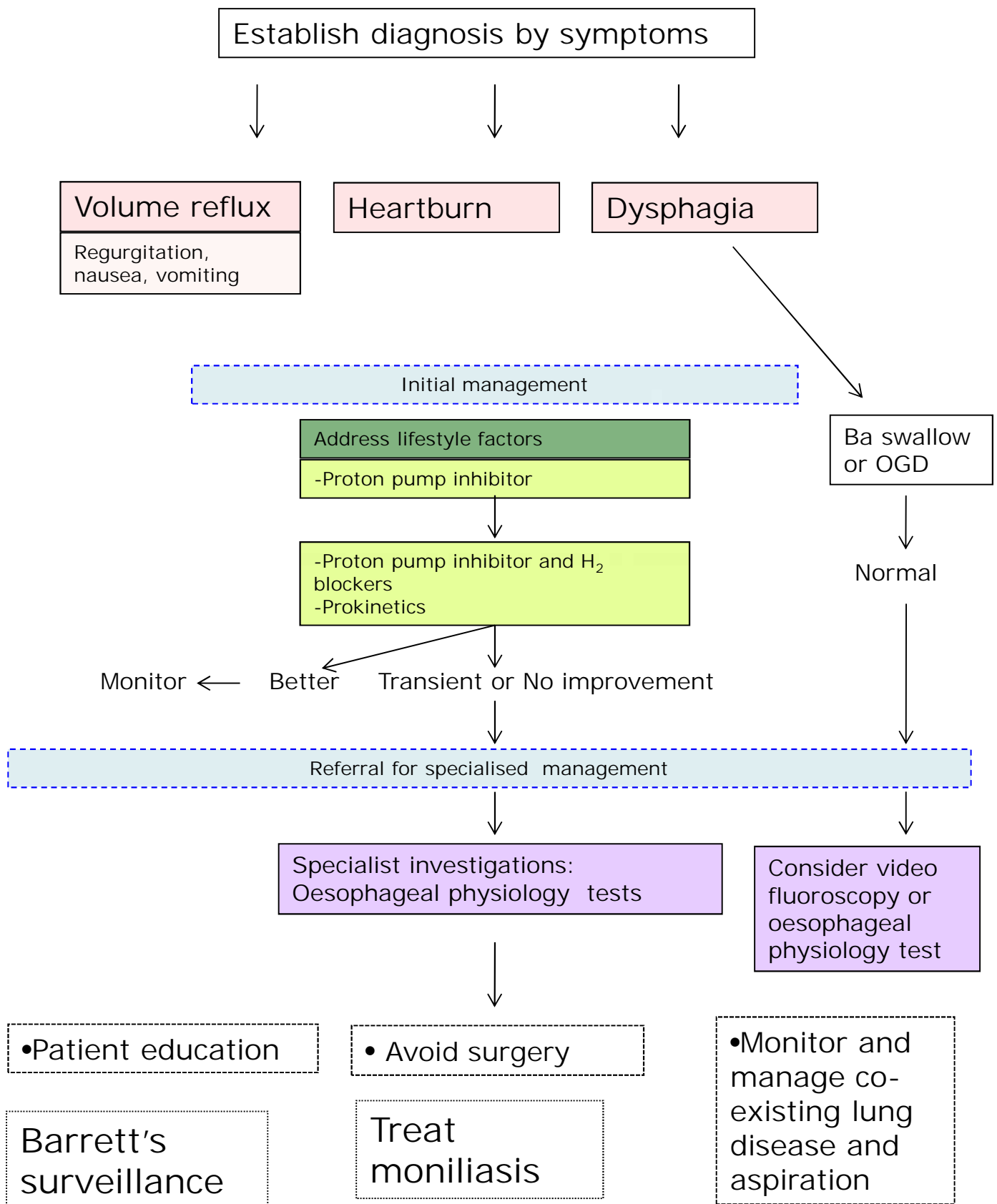
Management of incontinence



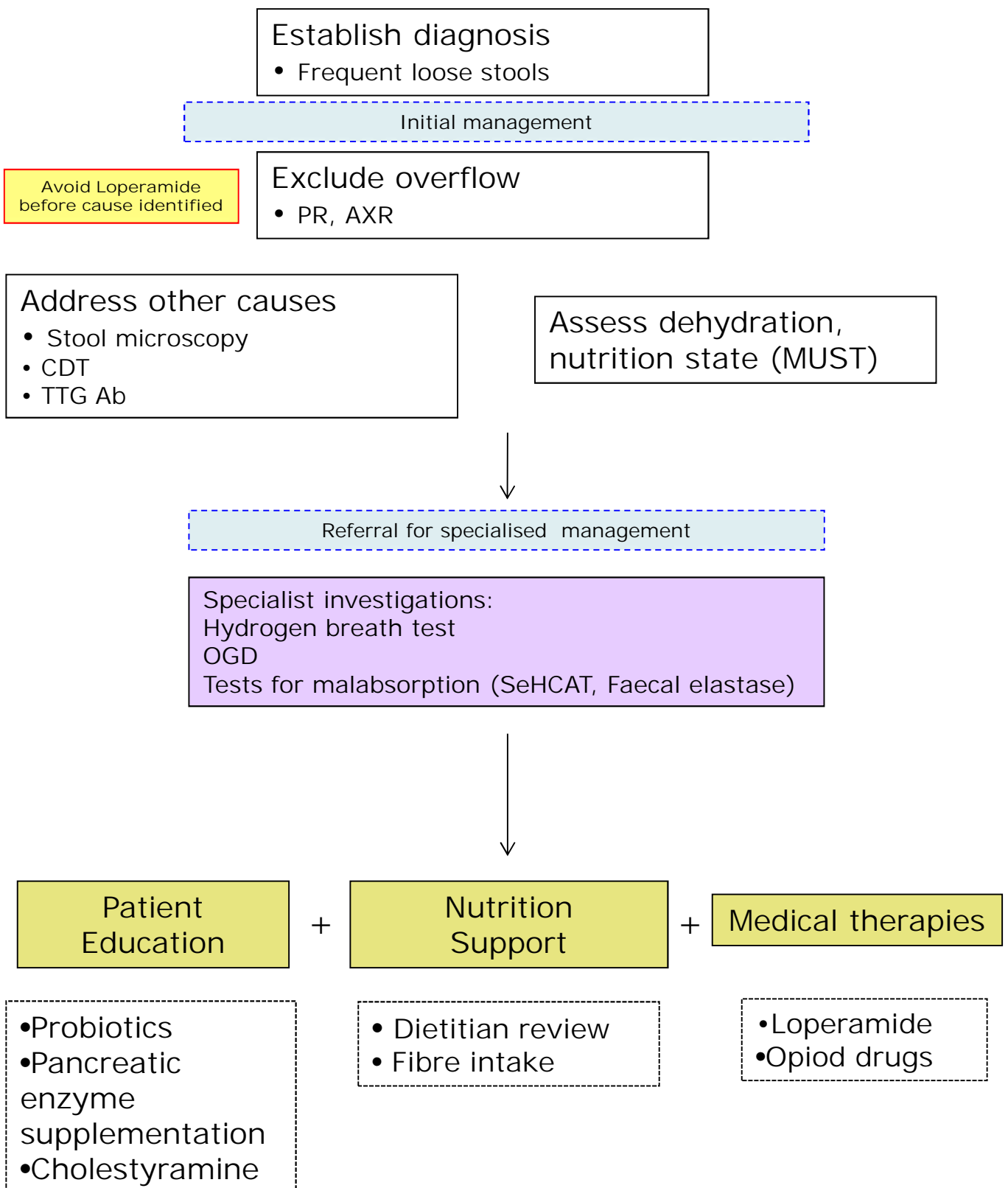
Management of Abdominal pain/Distension



Management of GORD



Management of diarrhoea



Management of weight loss/nutrition

Identify contributory causes

- Active systemic disease
- Other causes –malignancy, depression
- MUST assessment*

Initial management

*Score 0 – Low Risk

Routine clinical care
Repeat screening
3 month or as clinically indicated

*Score 1 – Medium Risk

Dietitian review
Document dietary intake
Advice on food choices
Monitor and repeat screening

*Score 2 or more – High Risk

Caloric supplements via dietitian

No improvement with progressive weight loss

Referral for specialised management

Patient Education

Set realistic goals to improve and increase overall nutritional intake

Nutrition Support

- Dietitian and Nutritional Support review

Medical therapies

- Consider enteral/parenteral feeding
- Pancreatic enzyme supplements

Management of constipation

