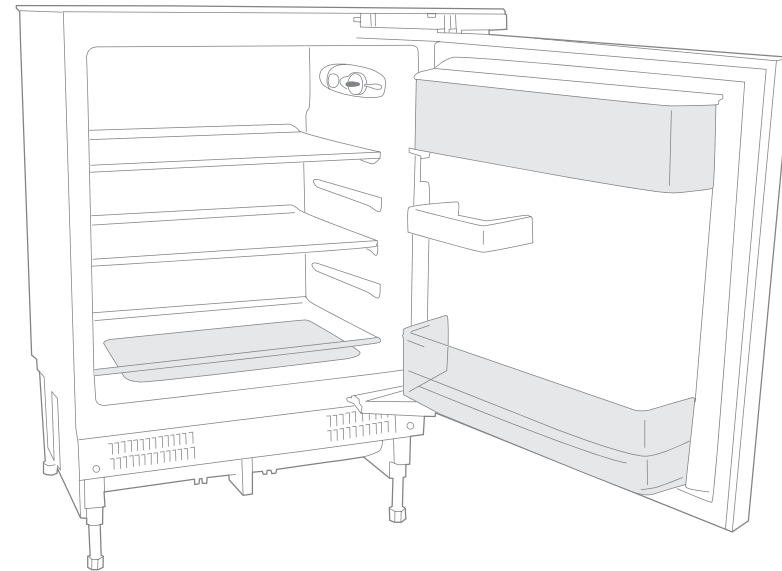


# How to use your new built-in larder fridge



Model MBUL60133

*Fridgemaster*<sup>®</sup>

## SAFETY



### WARNING

IT IS HAZARDOUS FOR ANYONE OTHER THAN AUTHORISED SERVICE PERSONNEL TO CARRY OUT SERVICING OR REPAIRS WHICH INVOLVE THE REMOVAL OF COVERS.

TO AVOID THE RISK OF AN ELECTRIC SHOCK DO NOT ATTEMPT REPAIRS YOURSELF.



### Locks

If your refrigerator is fitted with a lock, to prevent children being entrapped keep the key out of reach and not in the vicinity of the appliance. If disposing of an old refrigerator, break off any old locks or latches as a safeguard.

The appliance was designed and manufactured in compliance with international safety standards. The following warnings are provided for safety reasons and must be read carefully.



CE marking certifies that this appliance conforms to:  
Low Voltage Equipment - 73/23/EEC & 93/68EEC  
Electromagnetic Compatibility - 89/336/EEC, 92/31EEC & 93/68EEC

### Information concerning disposal

#### Disposal of packaging



The packaging protects your appliance from damage during transit. Please contribute to a better environment by disposing of the packaging materials in an environmentally friendly manner.

Observe local environmental standards when disposing of packaging material for recycling purposes.

Please ask your dealer or inquire at your local authority about current means of disposal.

Keep packaging materials out of the reach of children! It can become a choking or suffocation hazard.

### Disposal of your old appliance



Old appliances are not worthless rubbish! Recycling old appliances can reclaim valuable raw materials.



This appliance has been identified in accordance with the European directive 2002/96/EC on Waste Electrical and Electronic Equipment – WEEE.

The directive requires that old household electronic appliances must not be disposed of in the normal unsorted municipal waste stream. Old appliances must be collected separately in order to optimise the recovery and recycling of the materials they contain and reduce the impact on human health and the environment. The crossed out “wheeled bin” symbol on the product reminds you of your obligation, that when you dispose of the appliance it must be separately collected.

Consumers may take their old appliances to public waste collection areas, other communal collection areas, or if national legislation allows return it to a retailer when purchasing a similar new product.

Old appliances still have some residual value. An environmentally friendly method of disposal will ensure that valuable raw materials can be recovered and used again. The refrigerant used in your appliance and insulation materials require special disposal procedures. Ensure that none of the pipes on the back of the appliance are damaged prior to disposal. Up to date information concerning options for disposing of your old appliance and packaging from the new one can be obtained from your local council office.

#### Redundant appliances:

Cut off the mains plug and discard it. Refrigerators contain refrigerants and the insulation contains gases. Refrigerant and gases must be disposed of properly.

Ensure the tubing of the refrigerant circuit is not damaged prior to proper disposal.

## SAFETY

### Safety and warning information

#### Before you switch ON the appliance

Please read the operating and installation instructions carefully. They contain important information on how to install, use and maintain the appliance. Keep all documentation for subsequent use or for the next owner.

#### Technical safety

This appliance contains a small quantity of environmentally friendly but flammable R600a refrigerant. Ensure that the tubing of the refrigeration circuit is not damaged during transportation and installation. Leaking refrigerant may ignite.

If damage has occurred

- Keep naked flames and/or ignition sources away from the appliance.
- Pull out the mains plug.
- Thoroughly ventilate the room for several minutes.
- Notify customer services.

The more refrigerant an appliance contains, the larger the room must be. Leaking refrigerant can form a flammable gas-air mixture in rooms which are too small. The room must be at least 1m<sup>3</sup> per 8 g of refrigerant. The amount of refrigerant in your appliance is indicated on the rating label on your appliance.

#### Important information when using the appliance

- This appliance is not intended for use by persons (including children) with reduced physical, sensory or mental capabilities, or experience or knowledge, unless they have been given supervision or instructions concerning the use of the appliance by a person responsible for their safety. Children should be supervised to ensure that they do not play with the appliance.
- If the supply cord is damaged, it must be replaced by the manufacturer, its service agent or similarly qualified persons in order to avoid a hazard.
- Never use electrical appliances inside the refrigerator (e.g. heater, electric ice maker, etc.). Explosion hazard!
- Never use a steam cleaner to clean the appliance. The steam may penetrate electrical parts and cause a short circuit. Risk of electric shock!
- Do not store products which contain flammable propellants (e.g. spray cans) or explosive substances in the appliances. Explosion hazard!
- Do not stand or support yourself on the base, drawers or doors, etc.
- Before defrosting and cleaning the appliance, pull out the mains plug or switch off the fuse. Do not pull out the mains plug by tugging the cable.
- Commercially frozen pre-packed food should be stored in accordance with the frozen food manufacturers instruction.
- Bottles containing a high percentage of alcohol must be sealed and stored in an upright position.
- Keep plastic parts and the door seal free of oil and grease. Otherwise, the plastic and door seal will become porous.
- Never cover or block the ventilation openings for the appliance.
- Do not store bottled or canned drinks (especially carbonated drinks) in the ice compartment. Bottles and cans may explode!
- Never put frozen food, or ice cubes, straight from the ice compartment into your mouth. Risk of frost burns to the lips and tongue!
- Avoid prolonged touching of frozen food, ice or the inner freezer walls or tubing etc. Risk of frost burns to the skin.
- Do not scrape off frost or stuck frozen food with a knife or pointed object. You could damage the refrigerant tubing. Leaking refrigerant may ignite. Only use a plastic scraper.
- In the case of malfunction, under no circumstances should you attempt to repair the appliance yourself. Repairs carried out by inexperienced persons may cause injury or further malfunctioning to the appliance.
- When the appliance is unplugged please wait for 5 minutes before plugging it in again. Otherwise, the compressor will be overloaded.

- Do not use electrical appliances such as a hairdryer or heaters near your refrigerator.
- Do not store inflammable gases or liquids inside your refrigerator.

#### Children in the household

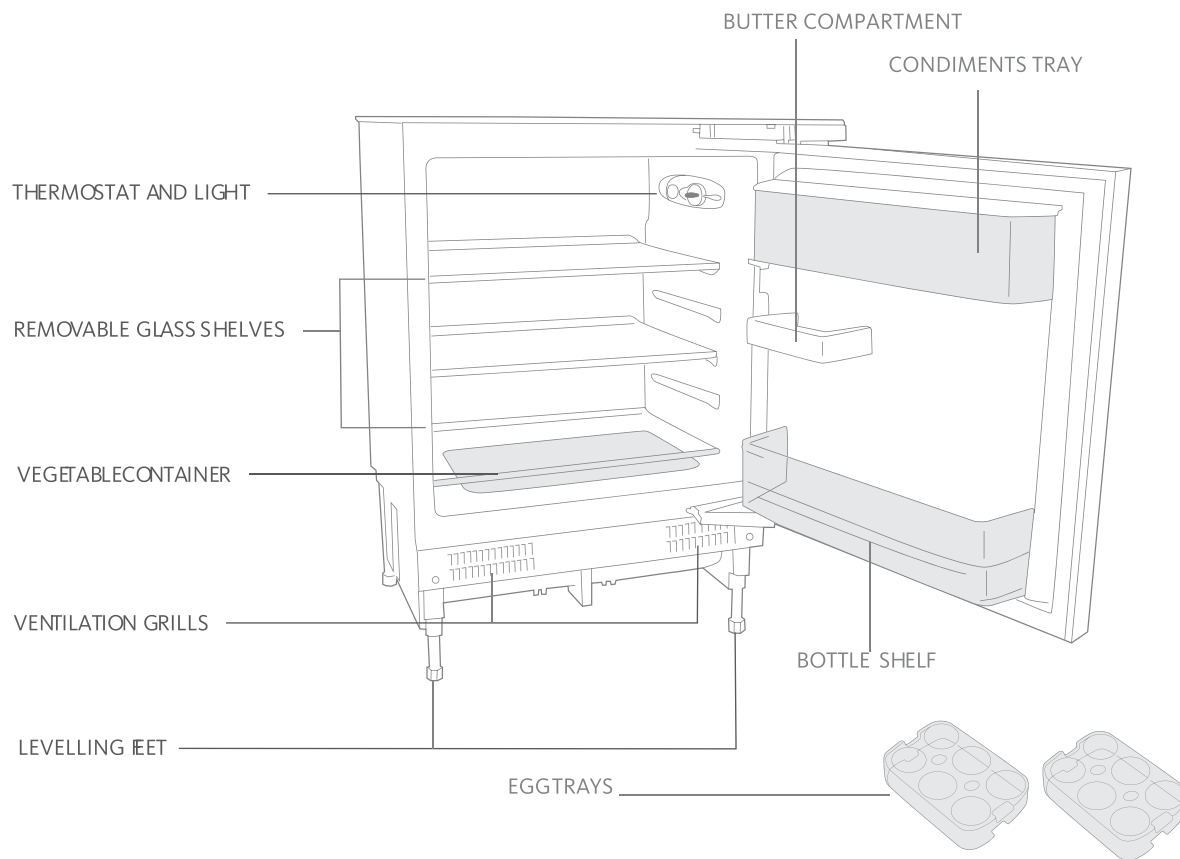
- Keep children away from the packaging and its parts. Danger of suffocation from folding cardboard and plastic film!
- Do not allow children to tamper with the controls or play with the appliance. It is not a toy. Under no circumstances should children be allowed to sit on the bins or hang from the door.
- If the appliance features a lock, keep the key out of the reach of children.

#### General requirements

- The appliance is designed for domestic use inside the home and is not intended for commercial or industrial use.
- The appliance must be used to store food products by adults only and according to the instruction manual.
- Try to avoid keeping the door open for long periods or opening the door too frequently in order to conserve energy.
- Do not fill the appliance with too much food: cold air must circulate freely for food to be preserved properly.

## GETTING TO KNOW YOUR LARDER FRIDGE

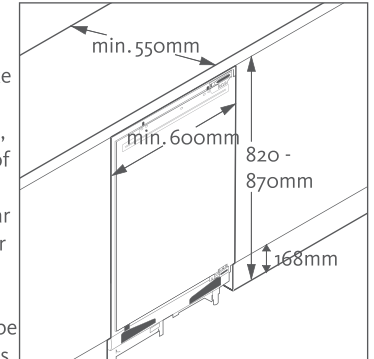
Please read these instructions and the SAFETY guidelines on page 9 carefully before using your new Fridgemaster Larder Fridge. The Larder Fridge is for indoor, domestic use only. Please keep this instruction book in a safe place for future use



## INSTALLATION

### Location

When selecting a position for your built-in Larder Fridge make sure the floor is flat and firm, and the room is well ventilated, with an ambient temperature of between 16°C and 38°C. Avoid locating your Larder Fridge near a heat source, eg. cooker, boiler or radiator. Also avoid direct sunlight. The Larder Fridge is free standing and designed to be inserted alongside kitchen units



and fitted with a matching unit door. When your Larder Fridge is working, the grille on the back may become hot and the sides of the Larder Fridge warm. It must therefore be installed in a space with the following measurements: The distance from the floor to the underside of the work surface should be between 820mm-870mm. It should have a width of 600mm and a depth of at least 550mm. The Larder Fridge door can either open to the right or the left, depending on the location and which suits you. See page 5 if you want to reverse the door swing. This must be done before you fit the cabinet outer door.

### Cleaning before use

Wipe the inside of the Fridge with a weak solution of bicarbonate of soda. Then rinse with warm water using a soft 'wrung-out' sponge or cloth. Wipe completely dry before replacing the shelves. You can clean the Fridge externally with wax polish. If you require more information refer to CLEANING on page 9.

## INSTALLATION

### Before plugging in YOU MUST

Check that you have a socket that is compatible with the plug supplied with the Fridge. If not, see the section called Electrical Connections on page 11. Before installing your Fridge you should check the location of the socket and how accessible it is. It may also be necessary to place the power cable in position before finally installing the Fridge. DO NOT connect the power until final installation is complete. If the socket is inaccessible after the Fridge has been installed you may have to connect the power before final installation, if this is the case the thermostat control dial must be turned to o, the off position, see 'Setting the temperature' on page 8.

### Before switching on!

DO NOT SWITCH ON UNTIL TWO HOURS AFTER MOVING THE FRIDGE. The coolant fluid needs time to settle.

### Before using your Larger Fridge

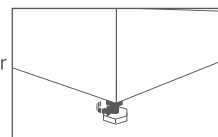
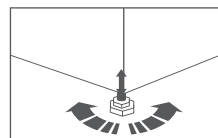
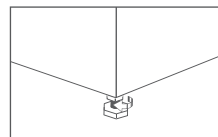
Before placing food in your Fridge, turn the Fridge on and wait for 24 hours, to make sure it is working properly and to allow the Fridge to fall to the correct temperature.

### Adjusting the height and level of the Larder Fridge

The height and level of the Larder Fridge should be adjusted so that the top surface of the Larder Fridge fits under the kitchen worktop. It should be flush and level with the underside

To do this use the 4 rotating levelling feet one at each corner of the Larder Fridge.

- 1 Loosen the locking nut by turning it clockwise using the Spanner.
- 2 Turn the foot to raise or lower the Larder Fridge.
- 3 When the feet have been adjusted and the Larder Fridge is level, tighten the locking nut against the bottom of the Larder Fridge by turning it anti-clockwise.

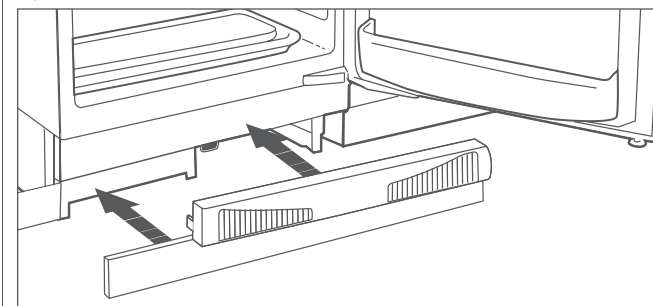


Once the Larder Fridge has been adjusted to the correct height, you may find it easier to carefully push the Larder Fridge in place and use the front levelling feet to ensure the Larder Fridge is level. If the Larder Fridge is not level, the doors and magnetic seal alignments will be affected.

Ensure that the Larder Fridge does not rest on the power cable. If the power cable is damaged it must be replaced by a qualified engineer before you use the Larder Fridge.

### Adjusting the plinth or kickboard

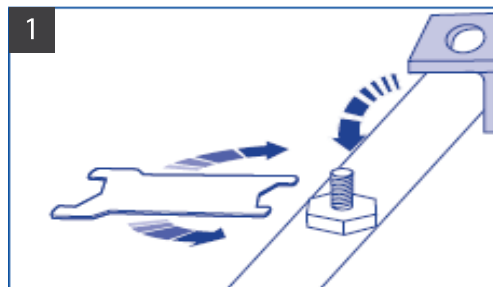
When the Larder Fridge has been fitted you may decide to attach a plinth or kickboard to match your existing kitchen units. Remove the bottom rail by releasing the fastenings just inside the grill on both sides and pull towards you. Insert the kickboard and replace the bottom rail to hold it in place.



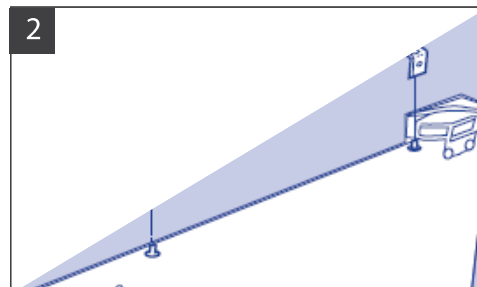
## FITTING THE CABINET DOOR

### Outer Cabinet Door Fixing Kit Contents:

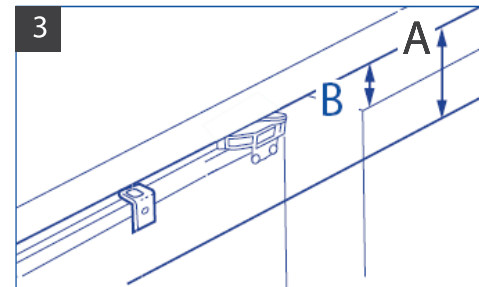
- 2 Double Threaded Bolts
- 4 Right Angled Brackets
- 2 Domed Headed Nuts
- 2 Bolts
- 4 Wood Screws



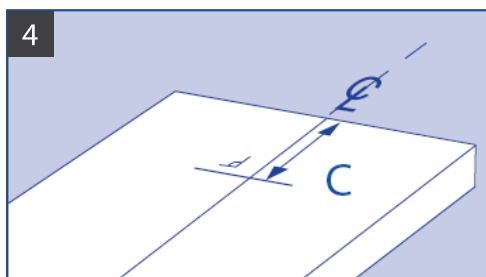
Remove the two plastic plugs on the top of the door and insert the double-ended bolts.



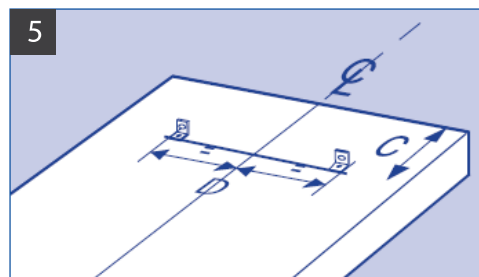
Place two of the right-angled brackets on the bolts and secure with the domed headed nuts. Measure the distance between the centres of the bolts. D=



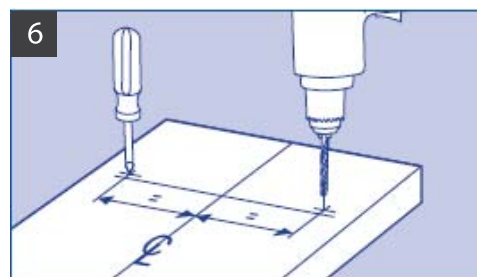
Measure from the underside of the work surface to the bottom of the right angled bracket. A= Next measure from the underside of the work surface to the top of the other unit doors. B=



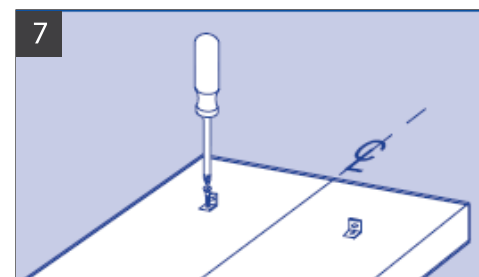
Subtract B from A to give C=. Mark a centre line down the length of the rear of the Cabinet Door. Measure the distance C from the top of the door and mark a line 90° to the centre line.



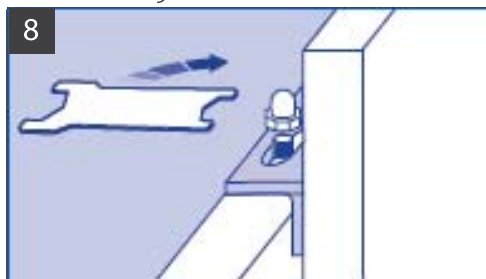
Draw a line the length of D on the rear of the door. Ensure that it is centred over the centre line. Place two of the brackets so that the bottom of each bracket is in line with the horizontal mark.



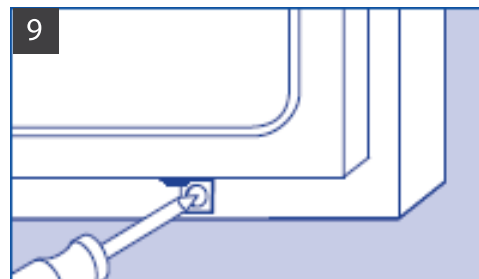
Mark the centre of the drill holes using a bradawl. Remove the brackets. Using a 3mm drill bit, drill a hole to a depth of 5 - 8mm.



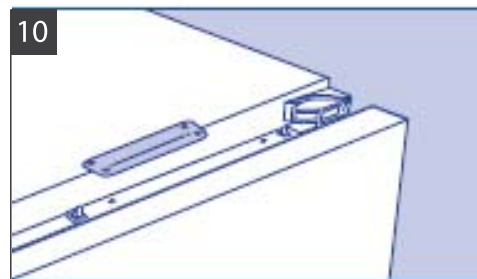
Using the screws provided, screw the brackets into place.



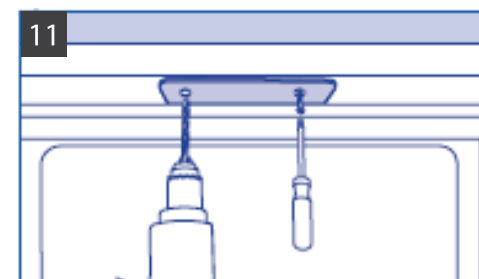
Fit the outer cabinet door onto the two bolts at the top of the appliance door and check that it is level with the other cabinet doors. Tighten the domed headed nuts to secure the brackets.



Fit the two remaining right-angled brackets to the bottom of the appliance door using the two bolts provided. Mark the hole centres on the outer cabinet door and remove it. Using a 3mm drill bit, drill a hole to a depth of 5-8. Refit the outer cabinet door and screw the brackets in place.



The appliance must be positioned so that the top bracket is flush with the underside of the work surface and flush with the other units. See 'Adjusting the height and level of the appliance' on page 3.



Open the appliance door. Use two screws and a drill bit that are appropriate to your work surface, mark and drill through the bracket into the underside of the work surface. Screw the brackets to the work surface.

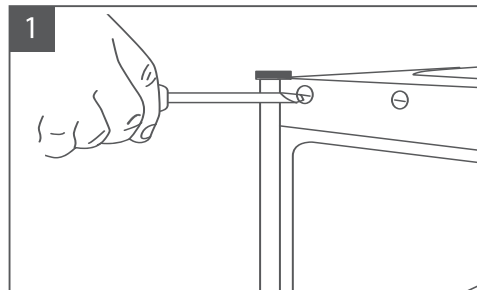
## REVERSING THE LARDER FRIDGE DOOR

- This must be done before fitting the cabinet outer door.
- Ensure the Larder Fridge is unplugged and empty.
- We recommend you have someone to assist you.

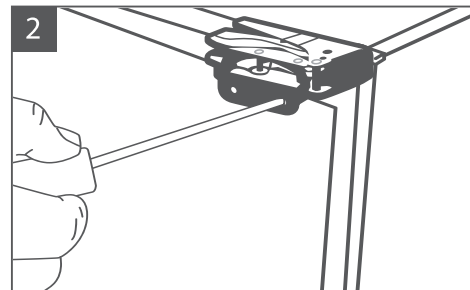
### Tools required

- Phillips style screwdriver.
- Flat bladed screwdriver.
- Socket set.

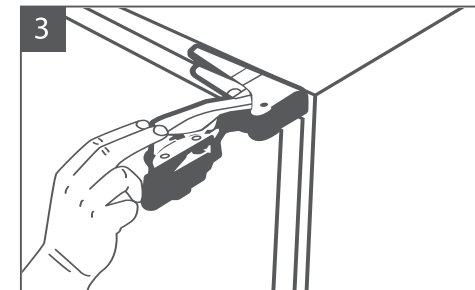
**WARNING!** Take care when opening the hinges. They are sprung and there is a risk of injury if they close on your hand.



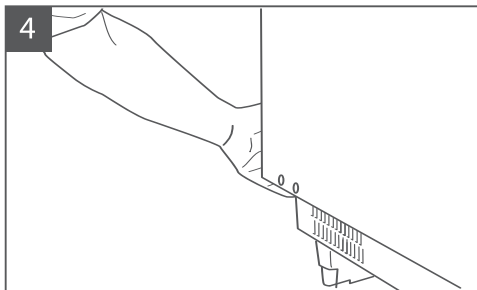
Remove the blanking plates from the outside of the Larder Fridge door.



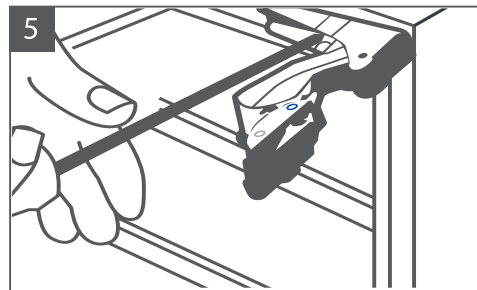
With the door closed remove the screws on the outside of the hinges. Start with the top hinge.



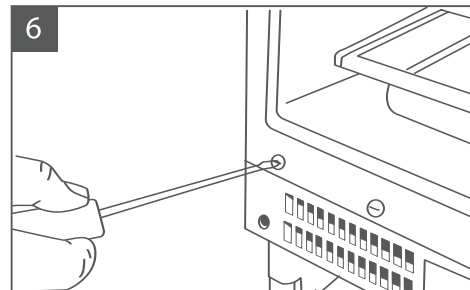
Open the hinges away from the door.



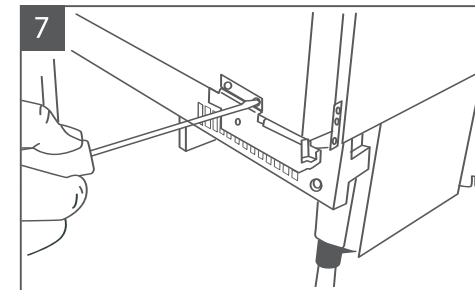
Supporting the bottom of the door as you do so. Be careful with the hinges. Remove the door.



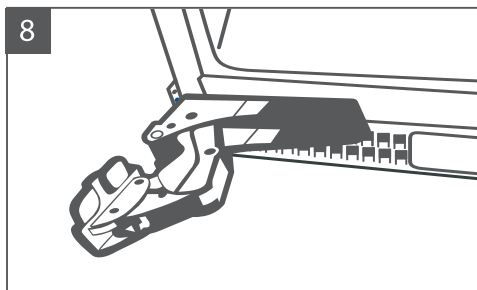
With the top hinge open undo the screws holding it to the cabinet. Be careful with the hinge, use a long shafted screwdriver if you have one.



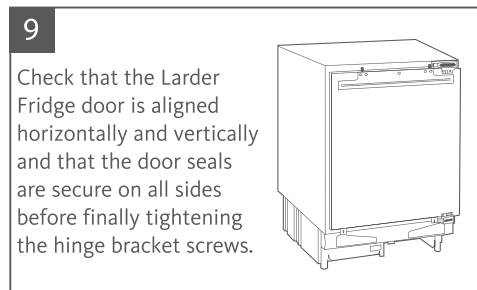
Remove the blanking plates for the cabinet.



Turn the hinge over and place it on the diagonally opposite corner of the cabinet. Screw back in place.



Repeat with the other hinge. Replace the cabinet blanking plates. Replace the door and re-attach the hinges.



Check that the Larder Fridge door is aligned horizontally and vertically and that the door seals are secure on all sides before finally tightening the hinge bracket screws.

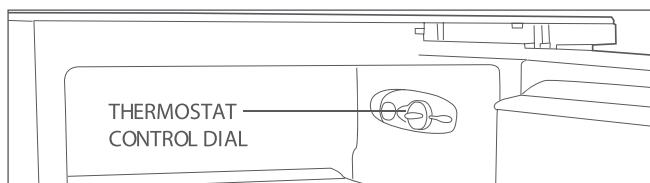


## USING YOUR LARDER FRIDGE

### Operating instructions

#### Setting the temperature

- 1 The internal temperature of your Larder Fridge is controlled by a thermostat. Position 0 STOP turns the Larder Fridge off, position 1 makes it warmest and position 7 makes the Larder Fridge coldest.
- 2 Before connecting the Larder Fridge to the mains supply make sure that the Thermostat Control Dial, located inside the Larder Fridge compartment next to the internal light, is set to between 3 and 4.

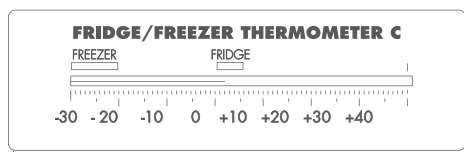


This is the recommended setting for the Larder Fridge, at normal room temperature (between 16°C and 32°C).

The Larder Fridge may not operate at the correct temperature if it is in a particularly hot or particularly cold room or if you open the Larder Fridge door often.

If you are concerned that your Larder Fridge is not being kept cold enough, and wish to check the temperature, you will need a special Fridge thermometer available from most supermarkets and hardware shops.

Place the thermometer on the middle shelf of the Larder Fridge where it can be read easily. Leave overnight. The temperature in the Larder Fridge should be between 2°C and 5°C.



### Noises inside the Larder Fridge!

If you have not owned a Larder Fridge before, you may notice that it makes some rather unusual noises. Most of these are perfectly normal, but you should be aware of them!

#### Gurgling, whooshing

These noises are caused by the circulation of the refrigerant liquid in the cooling system. It has become more pronounced since the introduction of CFC free gases. This is not a fault and will not affect the performance of your Larder Fridge.

#### Humming, purring or pulsating

This is the compressor motor working, as it pumps the refrigerant around the system.

### Shopping for chilled foods

#### Don't buy in your lunch hour!

Unless you have a Fridge at work to keep the food cold in the afternoon. Leaving food in your car or at room temperature for a prolonged period of time could raise food temperature to the level at which harmful bacteria grow.

#### Keep chilled foods together

When you are going around the supermarket and when you are travelling home, if you keep all the chilled foods together they will help to keep each other cold.

#### Use a cool bag

Special insulated bags can be bought from most supermarkets and hardware shops. These keep food cold for longer, but are only for getting chilled foods home, not storing it.

#### Unwrap as soon as you get home

Always unpack and place chilled foods in the Larder Fridge before storing dry food-stuffs.

### Tips for keeping food perfect in the Larder Fridge

#### Take extra care with meat and fish

Cooked meats should always be stored on a shelf above raw meats to avoid bacterial transfer. Keep raw meats on a plate which is large enough to collect juices and cover it with cling film or foil.

#### Leave space around food

This will allow cold air to circulate around the Larder Fridge.

#### Wrap up food!

To prevent transfer of flavours and drying out, food should be separately packed or covered. Fruit and vegetables need not be wrapped.

#### Let pre-cooked food cool properly

Always let pre-cooked food cool down before you put it in the Larder Fridge. This will stop the internal temperature of the Larder Fridge from rising.

#### Shut the door!

To prevent cold air escaping, limit the number of times you open the door. When returning from shopping, sort foods to be kept in your Larder Fridge while the door is closed.

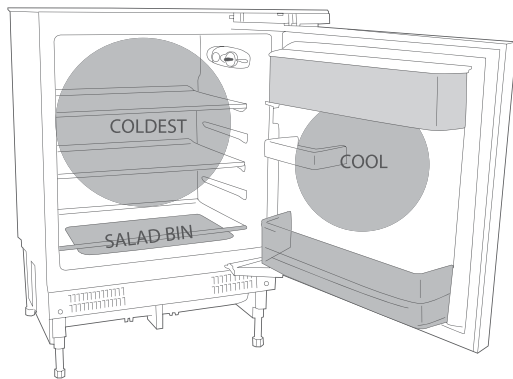


## USING YOUR LARDER FRIDGE

### Where to store your foods in the Fridge

#### Cool area

This is where to store foods which will keep longer if they are kept cool. Milk, yogurt, fruit juices, hard cheeses eg, cheddar. Opened jars and bottles of salad dressings, sauces and jams. Fats, eg, butter, margarine, low-fat spreads, cooking fats and lard, eggs.



#### Coldest area: 2°C to 5°C

This is where foods which must be cold to keep them safe should be kept.

- Raw and uncooked foods should always be wrapped.
- Pre-cooked chilled foods, eg. ready meals, meat pies, soft cheeses.
- Pre-cooked meats eg. ham.
- Prepared salads (including pre-washed chopped, pre-packed mixed green salads, rice, potato salad etc).
- Desserts, eg. fromage fraise, home-prepared food and leftovers. Cream cakes.

ALWAYS WRAP AND STORE RAW MEAT, POULTRY AND FISH ON THE LOWEST SHELF AT THE BOTTOM OF THE LARDER FRIDGE. THIS WILL STOP THEM DRIPPING ONTO, OR TOUCHING, OTHER FOODS.

#### Salad compartments

This is the most humid part of the Larder Fridge. Vegetables, fruit, fresh salad items eg. unwashed whole lettuce, whole tomatoes, radishes etc. WE RECOMMEND THAT ALL PRODUCE KEPT IN THE SALAD COMPARTMENTS ARE WRAPPED.

#### Useful tips

- Food should not be stored touching the rear wall of the Larder Fridge.

#### Safety points

- Never store flammable, volatile or explosive substances.
- Beverages with a high alcohol percentage must be stored in tightly sealed bottles, in a vertical position.
- Check the manufacturer's instructions on packaged food and store accordingly.

## CLEANING

### Cleaning inside the Larder Fridge

- 1 Before cleaning the Larder Fridge always switch off and disconnect the electrical supply.
- 2 Remove all the shelves and detachable accessories and wash in warm soapy water, rinse and dry thoroughly.
- 3 You should clean the Larder Fridge internally with a weak solution of bicarbonate of soda.
- 4 Check that the drain outlet at the rear wall is clear of food debris as this will affect the automatic defrosting of the Larder Fridge compartment.
- 5 Rinse with warm water using a clean 'wrung-out' sponge or cloth. Wipe the Larder Fridge dry before replacing the shelves, accessories and food.

### Cleaning the outside of the Larder Fridge

- Use standard furniture polish to clean the Larder Fridge exterior. Make sure that the doors are closed, to prevent polish getting on the magnetic door seal or inside.
- The grille of the condenser at the back of the Larder Fridge and the adjacent components can be vacuumed using a soft brush attachment.

### Cleaning tips

- Clean when food stocks are low.

# MAINTENANCE

## Moving your Larder Fridge

### Location

Do not locate your Larder Fridge near a heat source, eg. cooker, boiler or radiator. Also avoid direct sunlight.

### Levelling the Larder Fridge

Make sure the Larder Fridge is level. Use the rotating levelling feet on each corner. If the Larder Fridge is not level, the doors and magnetic seal alignments will be affected.

### Do not turn on the Larder Fridge for 2 hours

After the Larder Fridge is in place it needs to be left for 2 hours .  
The coolant fluid needs time to settle.

### Installation

Warning - do not cover or block vents or grilles of your Larder Fridge.

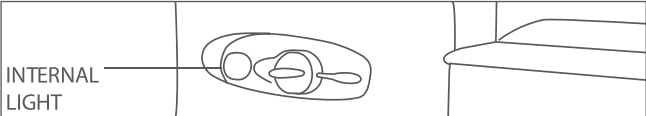
### Servicing

Repairs and maintenance of the appliance should only be performed by an authorised technician.  
The appliance must be readily accessible to the service engineer in the event of maintenance or repair being required.

Before carrying out the bulb replacement always switch off and

## Changing the internal light

- 1 disconnect the electrical supply.
- 2 To remove the plastic light bulb cover push inwards at the rear end of the cover until the sides releases, allowing you to lift the cover clear of the bulb.
- 3 Remove the old bulb by unscrewing it in an anti-clockwise direction.
- 4 Replace with a new bulb (E14 max 10W) by screwing it in a clockwise direction making sure that it is secure in the bulb holder.
- 5 Replace the translucent light cover, re-connect your Larder Fridge to the electrical supply and switch on.



# TROUBLESHOOTING

## The Larder Fridge is not working

Check it is plugged in and switched on. Check that the fuse in the plug has not blown. Plug in another appliance, such as a lamp, to see if the socket is working.

## Condensation appears on the outside of the Larder Fridge

This may be due to a change in the room temperature. Wipe off any residue of moisture. If the problem continues call your Customer Service Department.

## The Larder Fridge's compressor is operating continuously

You may have recently overloaded your Larder Fridge with fresh food. The Larder Fridge compressor will stop once the thermostat has reached the set temperature. If it continues check that the door has not been left open too long or too often. Check that the door is not misaligned or that the seal is not damaged or dirty. The Larder Fridge requires adequate ventilation. See 'Location' on page 4.

## Ice forms on the rear wall

It is normal for a small deposit of ice to be present on the back wall. This may be increased if the door has opened frequently or if food that is too warm has not been left to cool down sufficiently. Check that the door is not misaligned or that the seal is not damaged or dirty. Make sure that the back wall does not have any items touching it.  
Excess ice will be removed automatically

## Water is forming on the Larder Fridge floor

Check that the drain outlet at the rear wall is not blocked as this will affect the Larder Fridge's automatic defrosting.

## Noises

You may hear some unusual noises from time to time. See 'Noises inside the Larder Fridge' on page 8.

# TECHNICAL SPECIFICATIONS

Model	MBUL60133
Rated Voltage (V)	220 - 240
Rated Frequency (Hz)	50
Gross Volume (Litres)	135
Weight ( Net ) (Kg)	32
Product Dimension h/w/d (mm)	820/590/543
Refrigerant	R600a
Efficiency Rating	A+

The policy of Fridgemaster is one of continuously seeking new ways of improving its products. Therefore the Company reserves the right to change the specification of items illustrated and described, at any time.

## ELECTRICAL CONNECTIONS

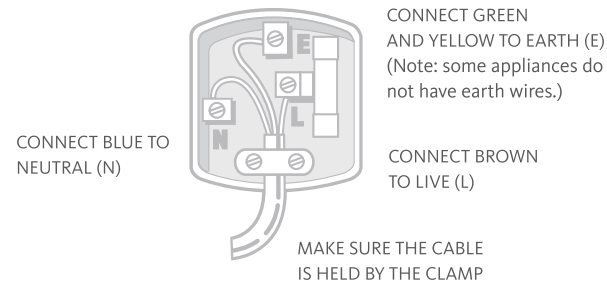
### THIS APPLIANCE MUST BE EARTHED.

This appliance is fitted with a fused three pin plug to BS 1363 which will be suitable for use in all houses fitted with sockets to current specifications.

If the fitted plug is not suitable for your socket outlets, it should be cut off and carefully disposed of. To avoid a possible shock hazard, do not insert the discarded plug into a socket.


### Fitting a new plug

If for any reason you need to fit a new plug, the flexible mains lead must be connected as shown here.



The wires in the mains lead fitted to this appliance are coloured in accordance with the following code:

If the colours of the wires in the mains lead of this appliance do not correspond with the coloured markings identifying the terminals in your plug, proceed as follows:

The wire which is coloured Green and Yellow **MUST** be connected to the terminal which is marked with the letter E (Earth) or symbol  or coloured Green. The wire which is coloured Blue **MUST** be connected to the terminal which is marked with the letter N or coloured Black. The wire which is coloured Brown **MUST** be connected to the terminal which is marked with the letter L or coloured Red.

Before refitting the plug cover, check that there are no cut or stray strands of wire inside the plug.

Use a 13 Amp BS1362 fuse, only BSI or ASTA approved fuses should be used. If you are in any way unsure which plug or fuse to use, always refer to a qualified electrician.

Note: After replacing or changing a fuse on a moulded plug which has a fuse cover, the cover must be refitted to the plug, the appliance must not be used without a fuse cover. If lost, replacement fuse covers can be obtained from an electrical shop.

This appliance complies with the following EEC Directives: 73 / 23 EEC (Low Voltage Directive) 89 / 336 EEC (EMC Directive).

FRIDGEMASTER

Unit D, Global Avenue

Global Park Millshaw, Leeds LS11 8PR

Tel: +44(0) 113 395 6930

Fax: +44(0) 113 270 8599

For further information please contact  
the Fridgemaster Technical Helpline on:  
0845 0508536



This symbol on the product or in the instructions means that your electrical and electronic equipment should be disposed at the end of its life separately from your household waste. There are separate collection systems for recycling in the EU.

For more information, please contact the local authority or your retailer where you purchased the product.

