



Neff  
W5420X1GB  
Washing machine

Predecessor:

Successor:

EAN code:  
4242004180098

sales programme:

**W5420X1GB**  
**Automatic washing machine**

**Performance**

- Energy efficiency class: A+
- Capacity: 7 kg
- Maximum spin speed: 1200 rpm  
Remaining moisture: 59 %
- C spin class
- Energy consumption :220 kWh per year, based on 220 standard washing cycles
- Energy consumption:standard 60 °C cotton programme 0.95 kwh full load and 1.01 kwh partial load and 40 °C cotton programme 0.86 kwh partial load
- are the standard washing programmes to which the information in the label relates. These programmes are suitable to clean normally soiled cotton laundry and are the most efficient programmes in terms of combined energy and water consumption.
- Weighted power consumption off-mode / left-on mode: 0.13 W / 2.95 W
- Programme time:60 °C cotton programme 165 min at full load 160 min at partial load and 40 °C cotton programme 135 min partial load
- Water consumption 11000 litres per year, based on 220 standard washing cycles
- Noise level washing : 46dB (A) re 1pW: Noise level spinning:63dB (A) re 1 pW

**Programmes/functions**

- Fully electronic control dial for all wash and special programmes
- Special programmes: Mixed load programme 30°C, Handwash wool, Delicates/silk
- Option buttons:Start, Prewash, Less Ironing, Rinse plus, Spin speed reduction

**Key features**

- 3D AquaSpa wash system

**Additional features**

- Safeguard monitoring system adjusts load distribution
- Aquastop with guarantee
- Foam detection system
- Noise insulation package
- Divider for Liquid Detergent
- Buzzer to indicate the end of cycle
- Metal door catch

**Technical Information**

- Dimensions (H X W X D): 81.8 x 59.6 x 57.4 cm
- Height adjustment with Cardan drive
- adjustable base height: 15 cm
- Furniture door is reversible
- Large white door with 130° opening and 30 cm porthole
- adjustable base depth: 6.5 cm

**Included accessories**

**Optional accessories**

**Alternative colors available**

**Technical Data**

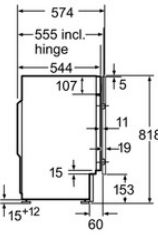
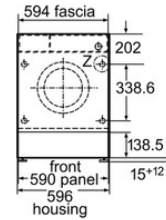
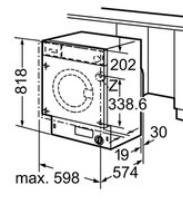
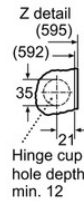
**Characteristics**

Construction type : Built-in  
Height of removable worktop (mm) : 820  
Dimensions of the product (mm) : 818 x 596 x 574  
Net weight (kg) : 76.0  
Connection rating (W) : 2300  
Current (A) : 10  
Voltage (V) : 220-240  
Frequency (Hz) : 50  
Approval certificates : CE  
Length of electrical supply cord (cm) : 225  
Washing performance class : A  
Door hinge : Left  
Wheels : No  
EAN code : 4242004180098

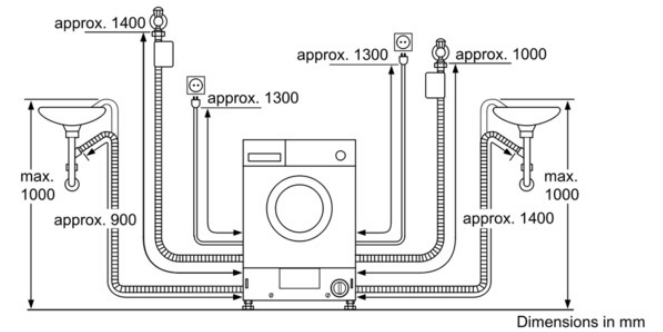
**Consumption and connection features**

Capacity cotton (kg) - NEW (2010/30/EC) : 7.0  
Energy efficiency class - NEW (2010/30/EC) : A+  
Energy consumption annual (kWh/annum) - NEW (2010/30/EC) : 220  
Power consumption in off-mode (W) - NEW (2010/30/EC) : 0.13  
Power consumption in left-on mode - NEW (2010/30/EC) : 2.95  
Water consumption annual (l/annum) - NEW (2010/30/EC) : 11000  
Spin drying performance class : C  
Maximum spin speed (rpm) - NEW (2010/30/EC) : 1161  
Average washing time cotton 40C (partial load) - NEW (2010/30/EC) : 135  
Average washing time cotton 60C (full load) (min) - NEW (2010/30/EC) : 165  
Average washing time cotton 60C (partial load) - NEW (2010/30/EC) : 160  
Noise level washing (dB(A) re 1 pW) : 46  
Noise level spinning (dB(A) re 1 pW) : 63  
Installation type : Full-integrated

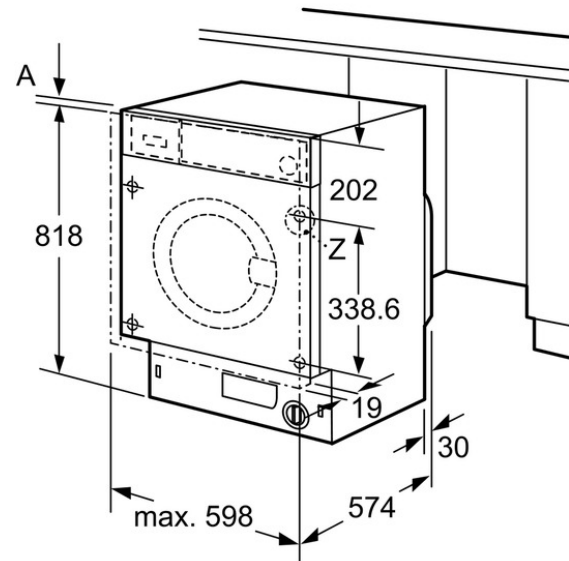
**W5420X1GB**  
Automatic washing machine



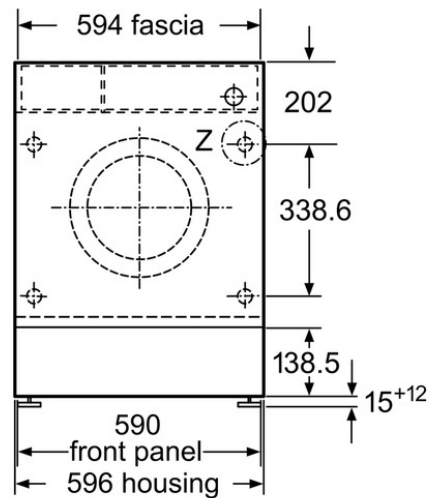
Measurements in mm



If, after fitting, the HydroSafe inlet hose to the installation is not long enough, it can be lengthened with the connecting kit WZ 10130 (length 2.5 m).

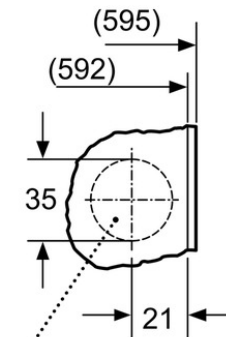


measurements in mm



measurements in mm

**Z detail**



Hinge cup hole  
min. 12 deep

measurements in mm