

World Hip Trauma Evaluation:

WHiTE

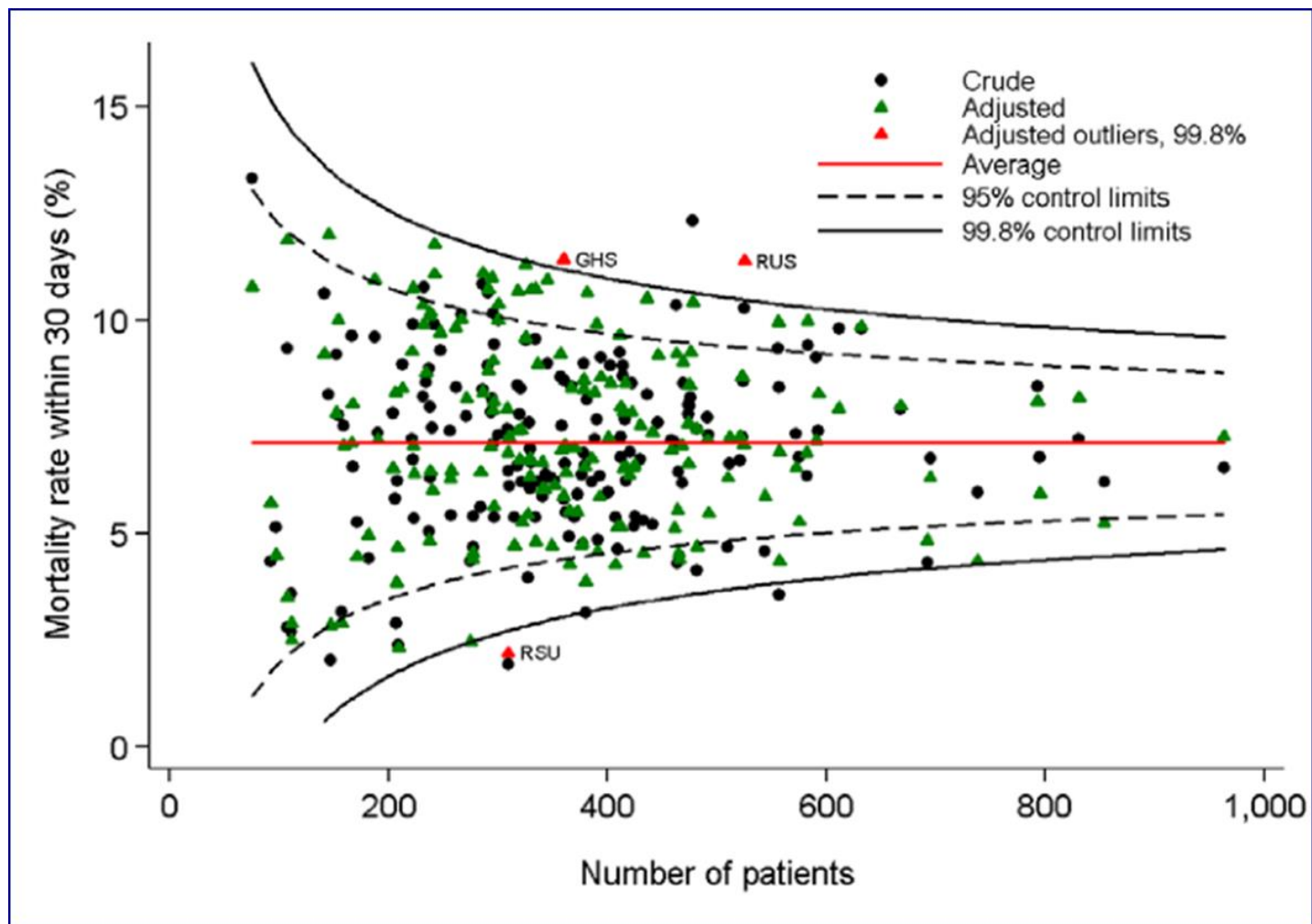
on behalf of WHiTE collaborators

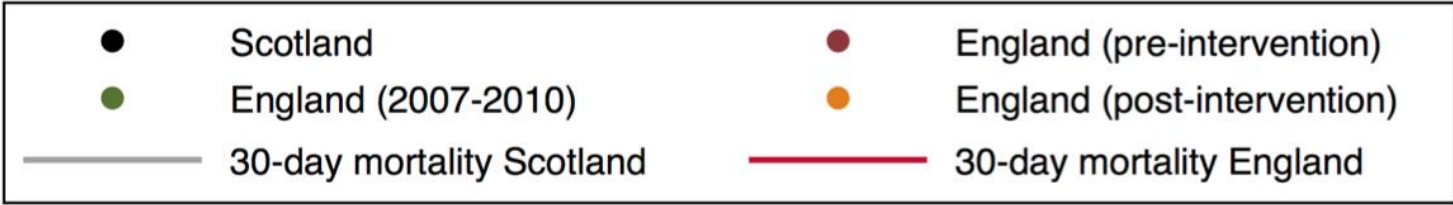
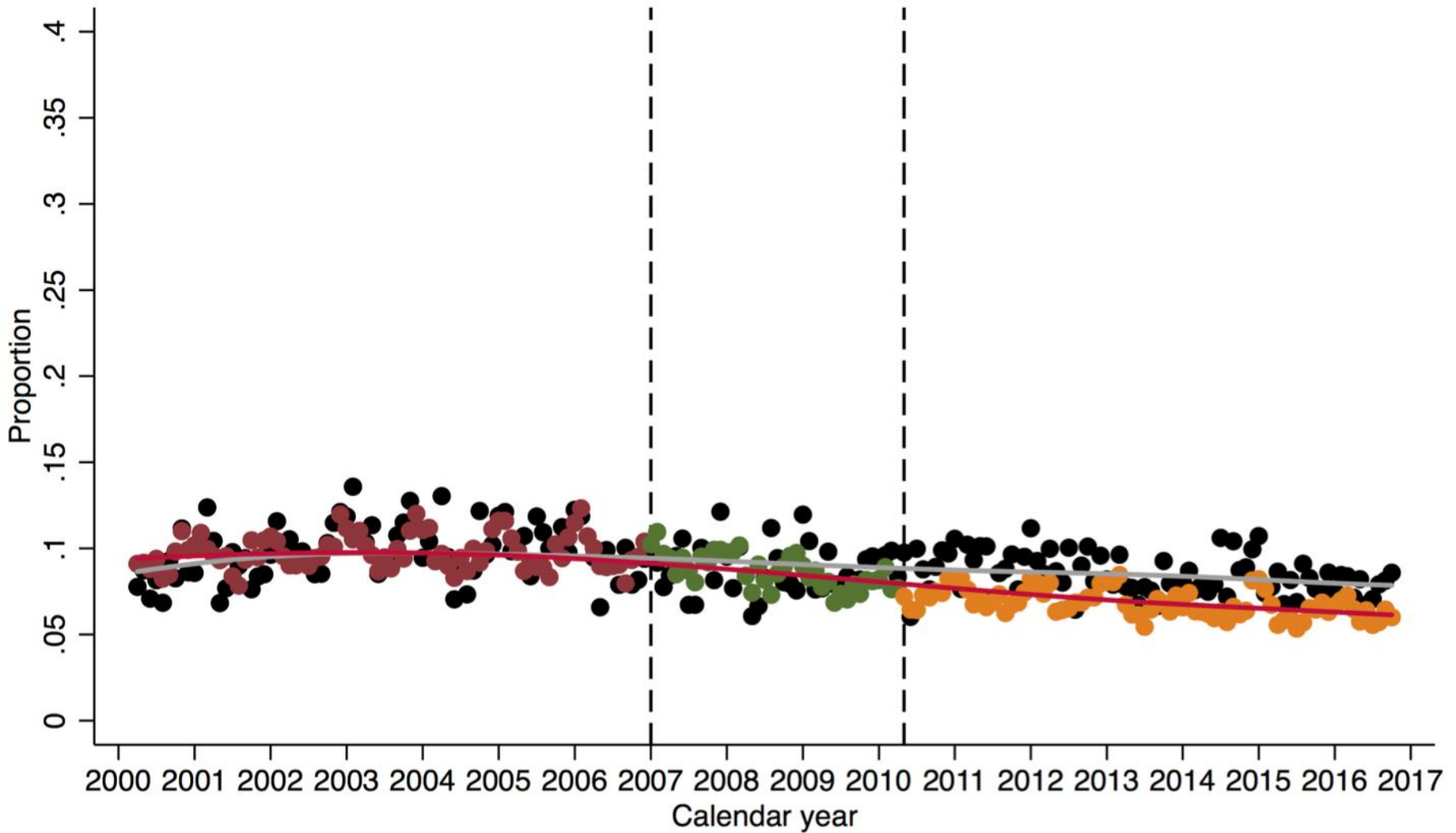


UNIVERSITY OF
OXFORD



Hip Fracture Audit saves lives!





National Hip Fracture Audit

- National Hip Fracture Audit has improved process/pathways
 - Time to theatre
 - Evidence-based surgery
 - Year-on-year reduced mortality...
- But, death is only one outcome
- And may not be the most important...

National Hip Fracture Audit

- UK National Hip Fracture Database has improved process/pathways
 - Time to theatre
 - Evidence-based surgery
 - Year-on-year reduced mortality...
- But, death is only one outcome
- And may not be the most important...



NIHR Programme Development Grant



PROMs and the UK NHFD

- What do patients think is important in terms of their recovery following hip fracture?
- Can we measure these outcomes within the framework of the NHFD?

1. Patient Expectations

- Detailed interviews with patients and carers
 - Including those with dementia
- Interviews explored:
 - Patients' experience of hip fracture
 - What was important to them, in terms of 'recovery' after hip fracture?

Result: Patient Expectation

- 'Active' and 'frail' patients have very different expectations about their recovery from a hip fracture
- Recovery as a return to pre-injury state OR subsumed within the aging trajectory / recovery through adaptation

Common themes

- General mobility
- Activities of daily living
- Self-care
- Anxiety/Fear of falling
- Pain
- Death

2. Review of outcome tools

Do we have Patient-Reported Outcome Measures which assess the areas of health which the patients think are important in their recovery from hip fracture?

Systematic review

- Outcome tools used in hip fracture studies
- Outcome tools used in studies involving older people in general
- Plus, review of validation data

Results: short list of PROMs

- General Health-related quality of life tools covered the important domains
 - EQ-5D and SF-12
- Hip scores
 - Oxford hip score
- Capability Measures
 - ICECAP-O

3. Measurement properties

- PROMs collected in a large cohort
 - Responsiveness
 - Correlation with hip scores
- Further interviews: patient opinions re.
 - Practicality
 - Relevance

Measurement properties

- HQoL scores correlate with hip scores
- Almost as sensitive to change over time
- Retrospective scores reflect population norms at baseline – even in demented patients

Patient opinions:

- General health-related quality of life scores relevant to recovery following hip fracture, for all patients
- EQ-5D 'relevant' and most 'practical'

4. A Core Outcome Set

- Multidisciplinary group
- Patient/carer representation
- Review of the evidence

- Consensus Meeting (COMET)
- Majority voting

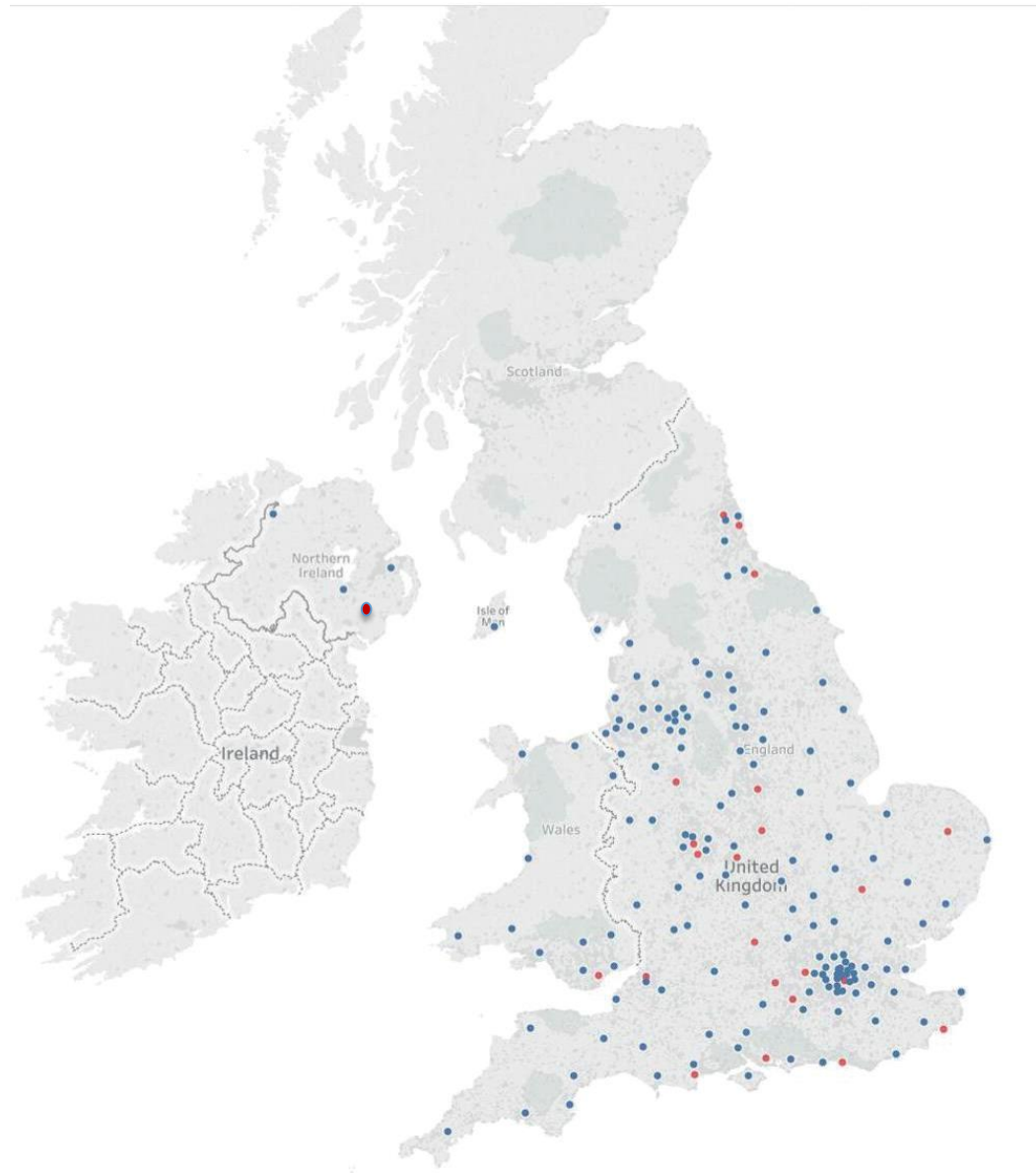
Core Outcome Set

- At 4 months, adjusted for baseline:
- EQ-5D-5L
- Residential status
- Mobility status
- Death

So, what next?

- How can we use this core outcome set to improve patient care?
- Could we embed patient-reported outcome in the NHFD dataset?





Research Question

- Patients aged 60 years and over having surgery for a hip fracture
- Standard UK treatment pathways
- Health-related QoL (EQ5D)
- Mobility, Residency and Mortality

Research Question

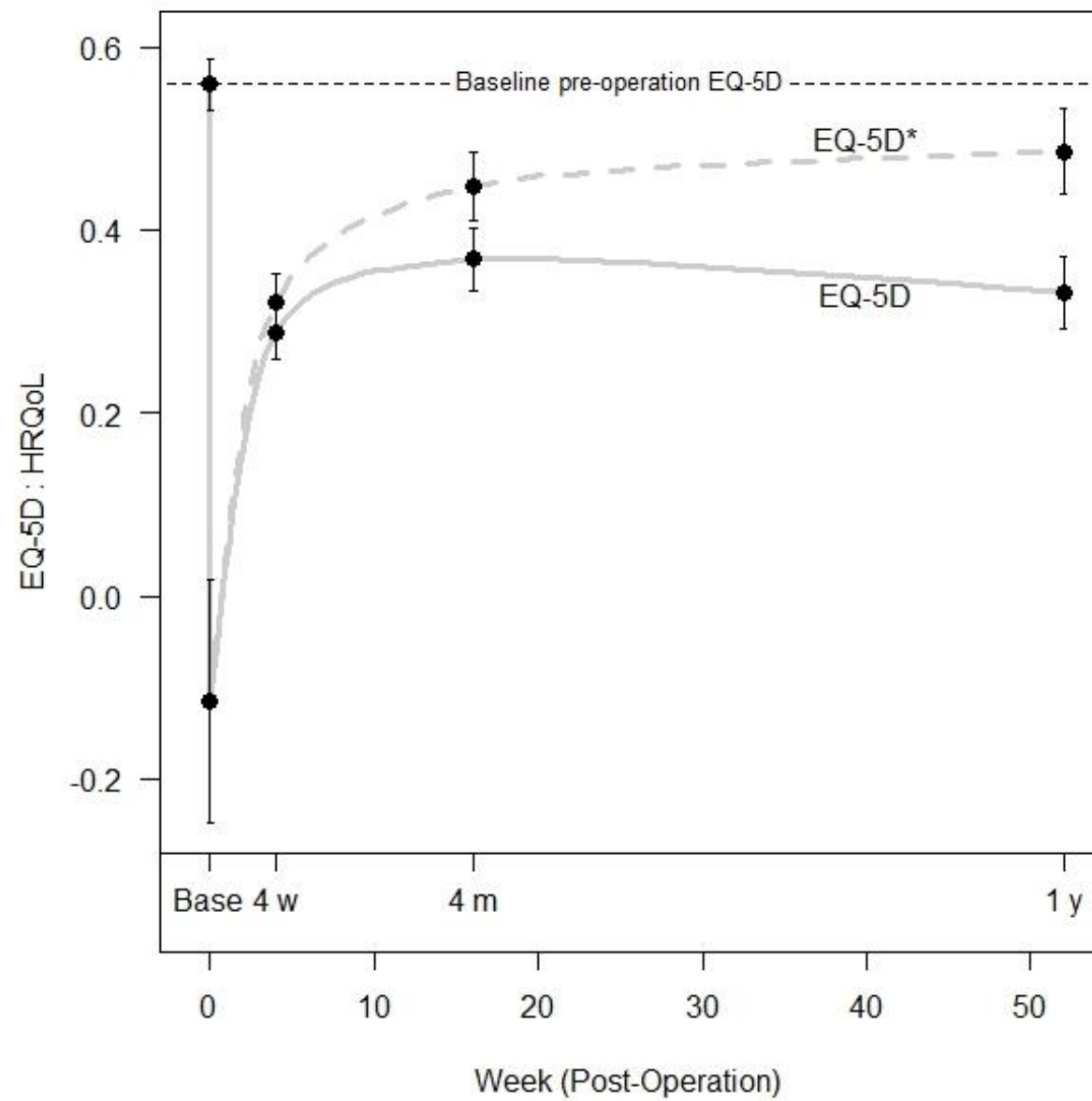
- Patients aged 60 years and over with hip #
- **Standard UK treatment pathways**
- Health-related QoL (EQ5D)
- Mobility, Residency and Mortality

Research Question

- Patients aged 60 years and over with hip #
- Standard UK treatment pathways
- Health-related QoL (EQ5D)
- Mobility, Residency and Mortality

Participants

- Closed dataset at 6000 complete sets
- Data from 8673 participants – individual patient consent
- Cohort 2014 – 2017



FFN

Fragility Fracture Network



8th FFN Global Congress 2019

„Best care across the world“

Oxford, UK | 28-30 August 2019 | #ffncongress2019

