



“Strengthening Accountability in the HSE for Improved Health Outcomes”

Paul Reid
Chief Executive Officer,
Health Service Executive



@paulreiddublin

My early stakeholder engagement was very informative



A system “at war” with some of our key stakeholders



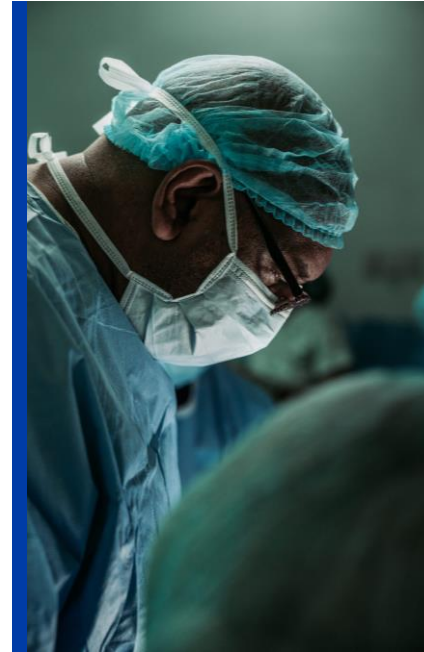
A need to build “trust & confidence”

And consider how strong we will be when we align these stakeholders

Some of my early observations & assessments



- **Commitment of staff**
- **A disconnection between the HSE centre & delivery systems**
- **Listening to the clinical and medical voice**
- **Need to strengthen management & leadership**
- **The future role of the centre of the HSE**

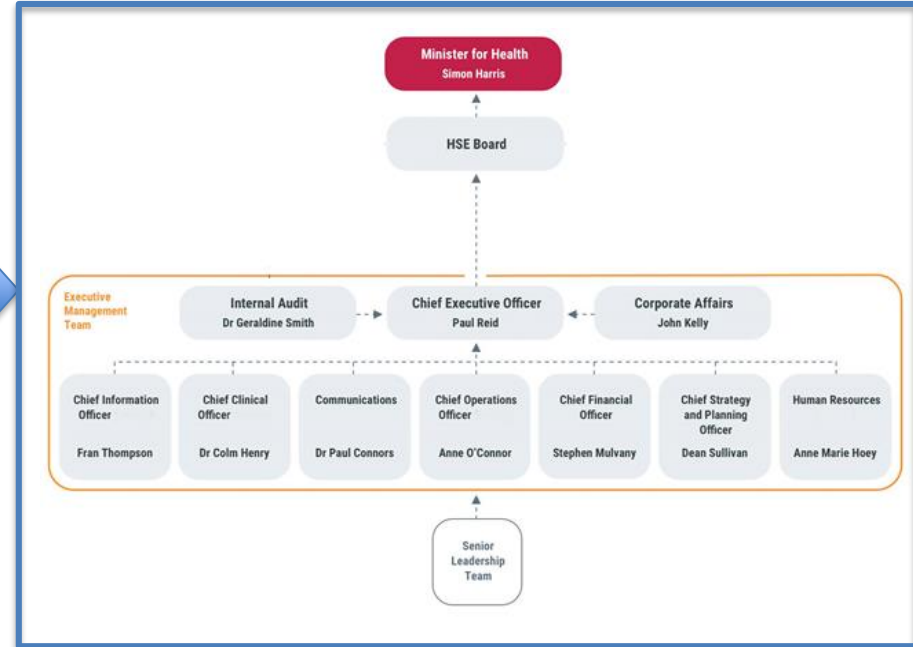
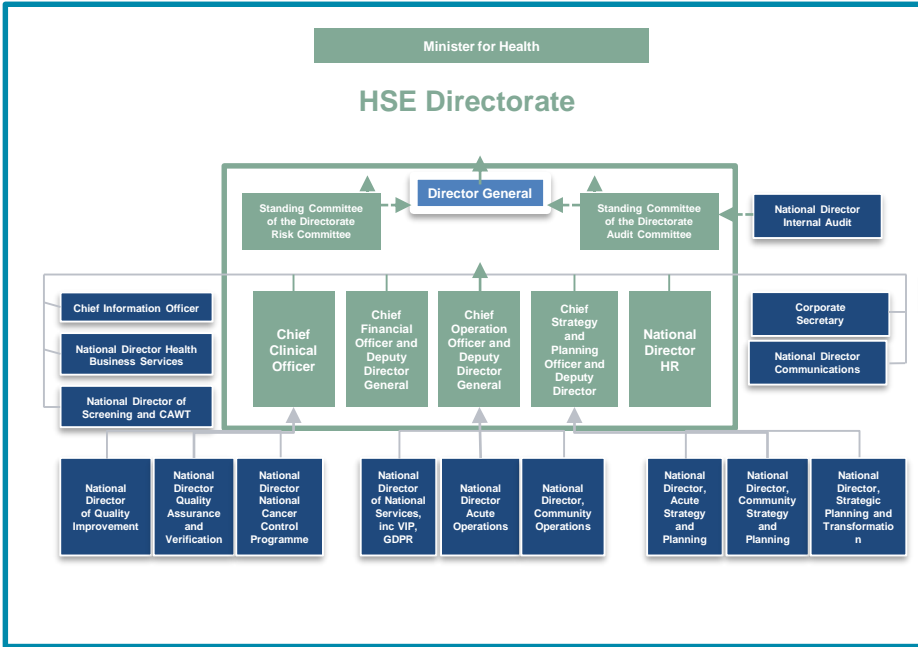


- **Providing predictability on financial performance**
- **Leveraging the supports from Colleges and other stakeholders**
- **Moving to a process driven organisation**
- **Leveraging innovation at the front line**
- **Using data to inform decision making**

A key priority is to create clarity on roles and responsibilities

Directorate

Executive Management



Three Key Priorities of the new HSE Board



Ciarán Devane
Chair



Prof. Deirdre Madden
Deputy Chair



Fergus Finlay
+ARC Member



Tim Hynes
+ARC Member



Brendan Lenihan
+ARC Vice Chair



Fiona Ross
+ARC Member



Dr. Sarah McLoughlin



Prof. Fergus O'Kelly



Aogán Ó Fearghail



Dr. Yvonne Traynor



Building
Trust
And
Confidence



Patient
Safety
and
Quality



Transforming
our Models of
Care

We need to balance accountability and a culture of learning



- Open disclosure training
- Systems Analyses Reviews
- Performance Management
- Clarity on role of centre
- Devolved decision making
- Enterprise Risk Management approach
- Patient Safety Strategy
- Protecting clinical learning

Some positive health outcomes health in Ireland

- Life expectancy has increased by nearly six years since 2000
- Increase driven by sharp reductions in some risk factors like smoking
- Improvements in treatments also contributed
- Mortality from preventable and treatable causes in Ireland is lower than the EU average
- Strongest gains among western European countries, and is now above the EU average
- This signals that public health policies and health care interventions are generally effective

5 Point Plan to improve our Health Service

- 1. Investment in Acute Capacity – Beds**
- 2. Strengthening our Primary & Community Care**
- 3. Improved integrated delivery of services**
- 4. Targeted medical and clinical recruitment**
- 5. Strategic approach to where and how our services are delivered**



THANK YOU

