

NORTHERN LIGHTS

SALAZAR

PENDANT

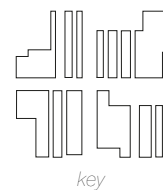
PRODUCT CODE: SALAZAR PENDANT NB759

Working with borosilicate glass, free blown using traditional techniques, these opulently curved shapes are influenced by Moorish architecture and juxtaposed with the addition of industrial detailing with a laser cut metal sleeve in three different patterns: Hex, Shard and Key.

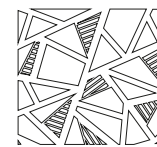
The glass is available in two finishes: Smoke (finished with Tarnished Gold on the sleeve and the metal detailing) and Anthracite (finished in Flamed Blackened Steel on the sleeve and the metal detailing).

The three sleeve patterns are available for each shape and finish. For a softer ambient light and diffused shadow patterns we recommend LED filament lamps.

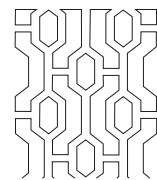
For a more dramatic diffused pattern, use standard warm light LEDs.



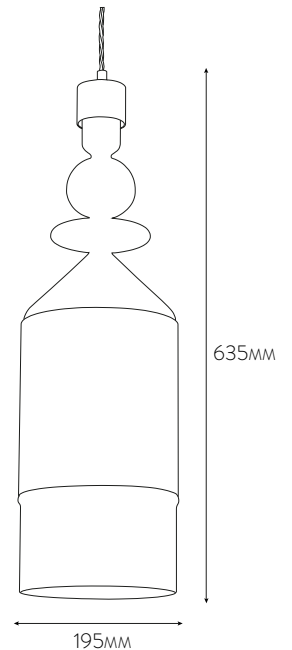
key



shard



hex



smoke glass, hex design (left) anthracite glass, key design (above)

Smoke glass with hex frame: NB759/H_2
Anthracite glass with hex frame: NB759/H_4
Smoke glass with key frame: NB759/K_2
Anthracite glass with key frame: NB759/K_4
Smoke glass with shard frame: NB759/S_2
Anthracite glass with shard frame: NB759/S_4

MAX WATTAGE : 1 X 40W
LAMP HOLDER TYPE : E27
RECOMMENDED LAMP : LED FILAMENT