

About Voyage Care

Voyage Care is a sector-leading provider of specialist care and support to 3,500+ people with learning disabilities, autism, acquired brain injuries and complex needs.



Ruddington View

From unplanned care to returning to a life in the community - success stories from the people we support



Get in touch

Contact our friendly enquiry team to discuss how we can support you or a loved one.



0800 035 3776
referrals@voyagecare.com
www.voyagecare.com

CARE HOMES by
voyagecare 

Supporting Briana to return home back to her family

Briana was referred to our unplanned care flats with 2:1 support during the day and waking night support.

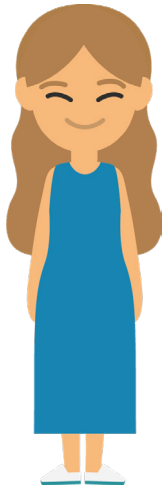
Previously, Briana lived at home with her parents, however the family had reached crisis point due to an increase in needs.

Her mother didn't want her daughter going into the community due to potential risks. Briana was then referred to Ruddington View

We worked closely with Briana and her mother to build rapport and trust.

Briana's Mum soon felt assured that Briana could be supported by our team to access the community.

Briana's 2:1 hours were reduced to 6 hours per day within a month as she settled so well.



It was important to ensure that Briana's medication was monitored and remained appropriate. We worked closely with the multi-disciplinary team and Briana's medication was reviewed.

As part of this review we agreed to support Briana during a change of medication.

In the past Briana has needed lots of support when her medication has been changed due to fluctuating needs. Our team have the skills and experience to respond and manage Briana's behaviour.

With responsive support, Briana was soon ready to

return home to her parents. Briana had benefited from accessing a 'safe place' when she needed to.

When it came to her leaving, Briana was reluctant to leave the flat which showed that she felt comfortable there. She is now living a far more settled life at her home with her parents.

Helping Gregg to move back into the community

Gregg was referred to our unplanned care flats due to safeguarding issues at his supported living scheme.

The supported living provider was concerned about the risks Gregg posed to another tenant. He needed a safe environment while a longer term solution was sourced.

While Gregg was supported at Ruddington View, our team identified that his support may need to be increased as part of the transition to the community for him to live independently.

When Gregg was ready to leave, we worked with partners involved and made recommendations based on our understanding that his support was reviewed.

This meant Gregg has been able to move back into the community with sufficient support and has maintained his independence.



Some information has been changed for confidentiality purposes.