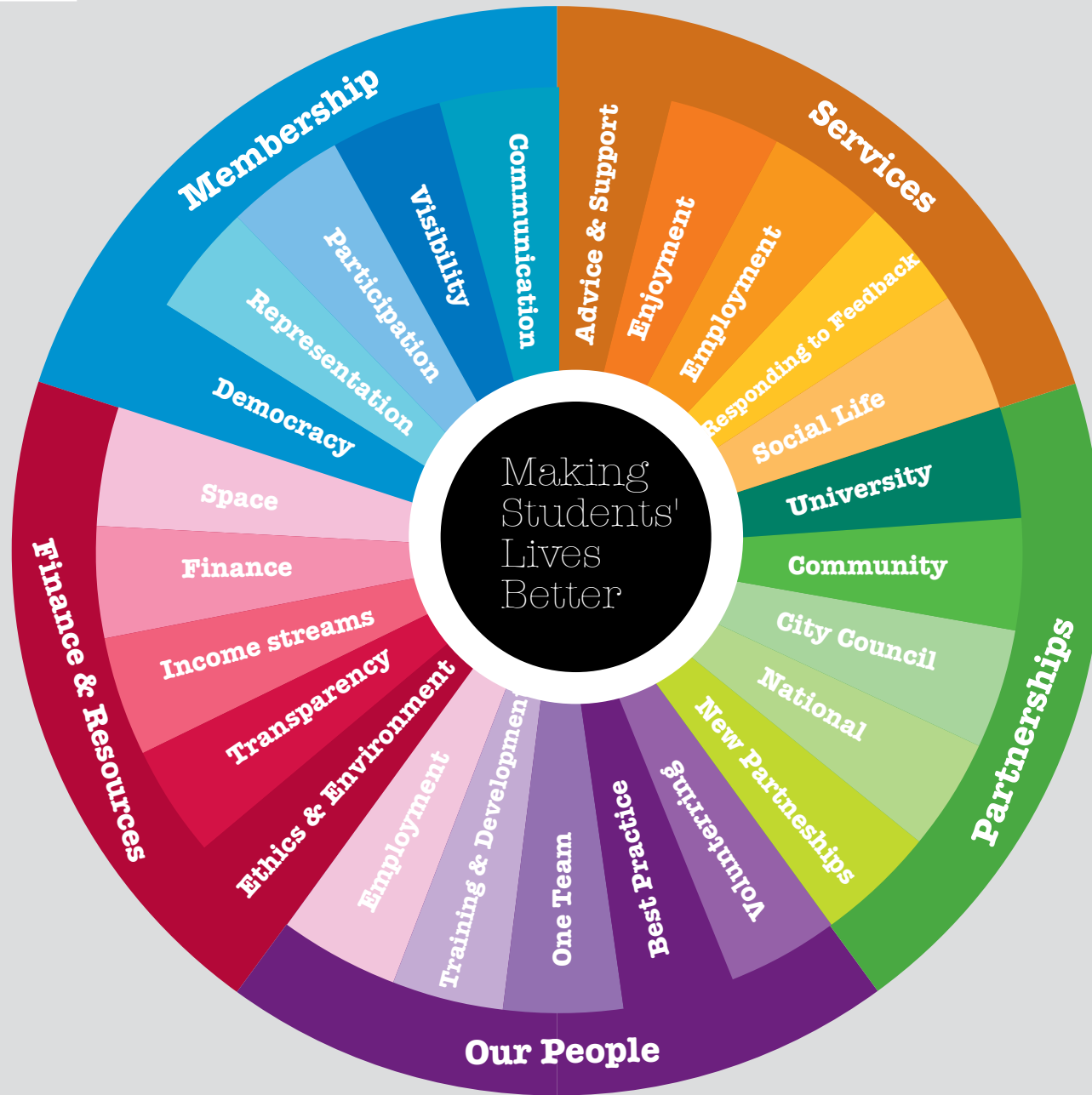




leeds beckett students' union

3 year plan 2013-16





Our Charitable Purpose

Leeds Beckett Students' Union's charitable object, as detailed in its Memorandum and Articles, is the advancement of education of students at Leeds Beckett University for the public benefit.

Our Vision

Our vision is to make students' lives better.

We will know if we are on track with our vision by annually measuring students overall satisfaction with Leeds Beckett Students' Union. Our aim is that by 2015 95% of students who respond to our perception survey will rate us as having had a positive impact on their experience as a student at Leeds Beckett University.

Our Values

Passionate

We are enthusiastic and committed to what we do as an organisation.

Aspirational

We aim to be the very best we can be.

Responsible

We are an open, transparent and responsible organisation with strong and effective governance arrangements.

Inclusive

We have an inclusive culture and a deep belief in the principle of equality of opportunity.

Student-Led

We are student-led through strong democratic structures and our students play an active role in our democracy and in society.

Areas of Activity



1. Communication

Communication between the Students' Union and students and between students and the Students' Union is well planned and effective.

2. Visibility

The Students' Union and its activities and work are highly visible and valued within the student experience. Our students know who we are, where we are and what we offer them.

3. Participation

We offer a wide range of student activities including student groups, societies, student media and volunteering, through which students develop transferable skills, build their experiences and develop self-confidence and citizenship.

4. Representation

We are the voice of students at Leeds Beckett University. We run a comprehensive course rep system, in partnership with the faculties, with a network of professionally-supported course reps who offer student feedback on the academic experience.

5. Democracy

We promote democratic engagement from students both internally and in the wider society.

Our Big Goals By 2016

M1

We will have a communications strategy in place. We use email and social media to communicate regularly with students and we will increase the number of responses from students to surveys and emails.

M2

We will improve the results of the perception survey year on year throughout the life of the plan.

M3

Participation in student groups, societies, student media and volunteering will increase year on year throughout the life of the plan.

M4

90% of students will know who their course representative is.

M5

At least 20% of students will have voted in our elections and all officer positions will be contested.

Areas of Activity

1. Advice and Support

We run a highly professional advice service with a team of dedicated and well trained advisers.

2. Enjoyment

We help thousands of students to make friends and enjoy themselves through societies, media and volunteering initiatives and through the provision of safe social spaces.

3. Employment

We offer opportunities for students to improve their skills through volunteering and participation in societies and media. We provide responsible employment opportunities for students within the venues and in other departments.

4. Responding to feedback

We will ask for and respond appropriately to feedback.

5. Social Life

We help students enjoy their time at University through a full social life, involvement in a range of student activities, provision of a diverse and exciting entertainment programme and through organising Welcome Week.



Services

Providing excellent and varied services which make students' lives better.

Our Big Goals By 2016

S1

90% of all students will be aware of the Advice Service.

S2

The average mystery shopper score for the Union will be at least 87%.

S3

We will increase the number of participation opportunities in our core areas. Satisfaction scores for students employed by the Students' Union will increase year on year throughout the life of the plan.

S4

We will carry out a perception survey every year and we will produce a report on outcomes along with an action plan for improvement.

S5

The number of student-focussed and student-led events will increase year on year throughout the life of the plan.



Areas of Activity

1. University

We represent students to the University and ensure that their interests are kept at the forefront of the University's decision-making process.

2. Community

We represent students to the communities in which they live and study.

3. City Council

We engage with local government and local politicians.

4. National

We represent students to wider society through active membership of the national student organisations including NUS and NUS Services Ltd.

5. New Partnerships

We seek new partnerships that will improve students' lives.

Our Big Goals By 2016

S1

We will produce an annual impact report which details our representation work and highlights successes.

P2

We will attend at least one community representation meeting a month and we will undertake at least 10 community engagement events each year.

P3

We will engage with elected representatives & others beyond the University to raise issues of direct concern to the experience of our membership at least three times per year.

P4

We will send a full delegation to NUS conference each year and our staff and officers will engage in appropriate NUS and NUS Services Ltd volunteering opportunities.

P5

We will secure at least 3 new partnerships which will improve students' lives.

Our People

Our people are our most important asset in delivering great service to our members and making students' lives better.



Areas of Activity

1. Employment

We offer a safe, flexible and friendly work environment with excellent benefits in order to ensure our staff are happy and motivated.

2. Training and Development

We believe that investing in the skills of our staff is key to our success. Our staff are well-trained and well-managed so that they are able to deliver great services to our members.

3. One team

Our staff work together as one team rather than a group of disparate departments.

4. Best practice

We implement best practice particularly in relation to equality of opportunity.

5. Volunteering

We will encourage staff to develop new skills and gain experience whilst giving back to the local community.

Our Big Goals By 2016

OP1

We will achieve at least 90% staff satisfaction in our annual staff survey every year.

OP2

We will have achieved Investors in People Status.

OP3

We will organise at least 3 staff training sessions a year.

OP4

Staff will know and understand our equal opportunities policy. It will form part of a staff training session at least once a year.

OP5

At least 25% of our staff members who are eligible will have volunteered as part of our Employee Supported Volunteering Scheme.

Areas of Activity

1. Space

We will work with the University to ensure that we are located within space that is fit for purpose, welcoming and visible.

2. Finances

We ensure strong financial management and run our commercial services to enable us to fund student support and activities and invest in the future of our services.

3. Income Streams

We will develop new income streams in order to help us fund our work to make students' lives better.

4. Transparency

We will be open and accountable to our students in all that we do.

5. Ethics and Environment

We will implement best practice in ethical and environmental management.

Our Big Goals By 2016

FR1

We will have relocated to new offices at City Campus and we will have regular road show events at Headingley Campus.

FR2

We will build our reserves over the life of the plan, generating a modest surplus in each year of the plan.

FR3

We will identify at least one new income stream each year throughout the life of the plan.

FR4

We will produce an annual report showing exactly where and how we spend our finances.

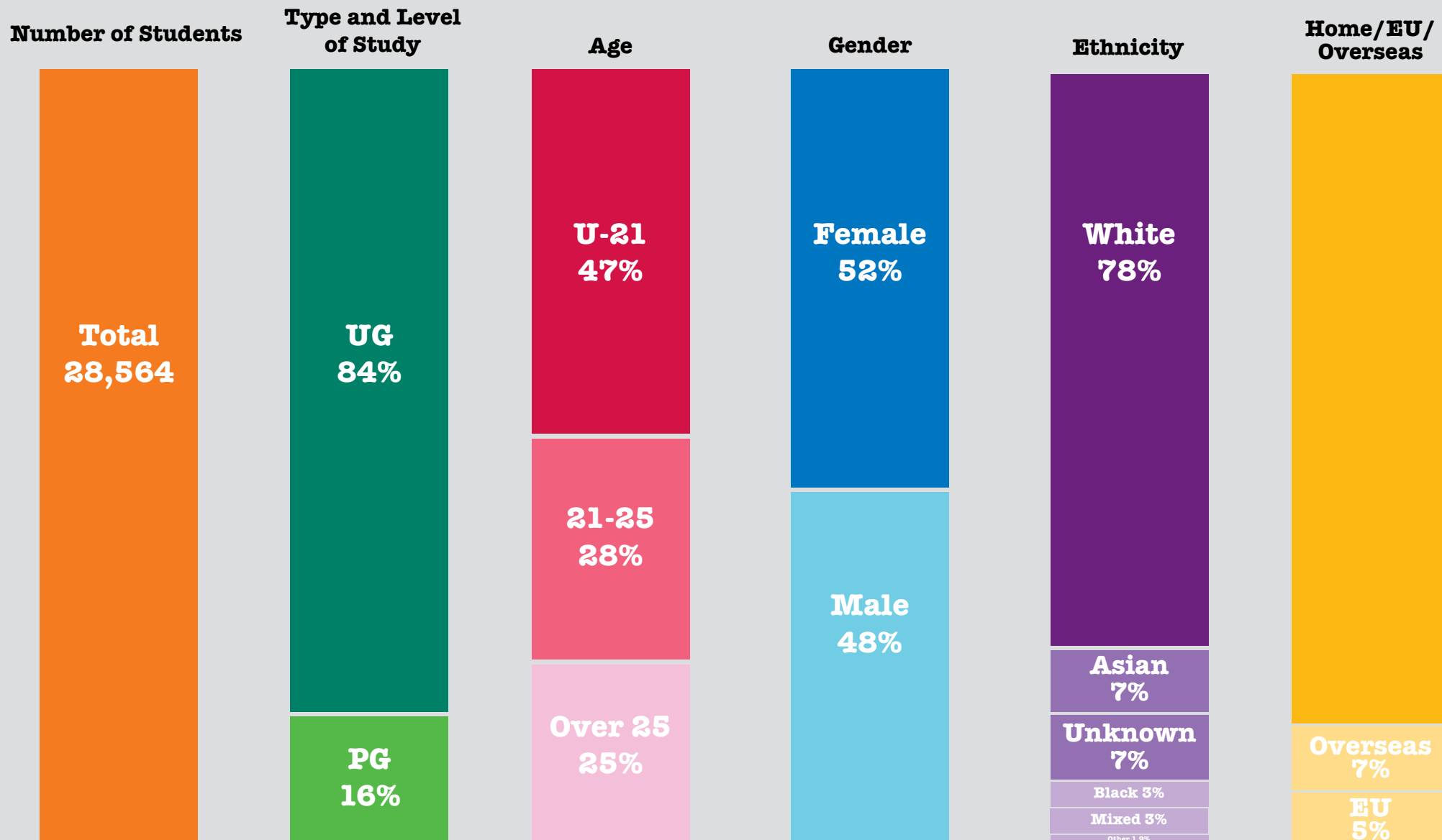
FR5

We will have maintained our gold green impact award over the life of the plan.



Finance+Resources

We need a strong and attractive Students' Union to assist our work to make students' lives better.



Source: Leeds Metropolitan University Registry Office as of December 2012.