

Lent Rise School Newsletter

March 2017

Issue 60
Page 1



Staff News

I am delighted to share that Mrs Hudson gave birth to Lola Rae Hudson on 19th February! Both mum and baby are doing well and are looking forward to visiting us soon.

School Values

Our School Council have recently met to decide and vote on values for each half term. Our School Value for this half term is 'Diligence'.

Definition of Diligence: careful and persistent work or effort

Breakfast and Afterschool Admin Update

As Mrs Hudson is now on maternity leave please contact the following people on 01628 662913 or on the normal email addresses as follows:

Mrs Ide : orchard@lentrise.bucks.sch.uk

Mrs Foley : riseandshine@lentrise.bucks.sch.uk

February's Attendance (to date)

Our overall whole school attendance figure for last month was 96%. The KS1 award went to class 1G who achieved 98.5% attendance and the KS2 award to 5J, who achieved a fantastic 99% attendance, for the month of February.

Termly Attendance Reward

Our school average is currently 96% and although many of our classes achieve a higher attendance rate than this, we could still do better!

Whilst we understand many illnesses require pupils to remain away from school to prevent the spread of infection, there are times when pupils could be at school so please do communicate with us so we can support appropriate attendance. Some other ways for you to support your child's attendance include arranging medical appointments outside of school time and ensuring they are prompt and on time to school.

Our children enjoy receiving 100% certificates but we do appreciate that the occasional day of absence sometimes cannot be avoided so we are asking the school council and Healthy School Council for their ideas to encourage above 96% attendance! Do ask your child to pass ideas to their School Council member to share with us.

Parent Consultations

Mrs Barnard has circulated parent consultation sign-up information for the week beginning 6th March. If you have not signed up please do!

Sports Week

EYs Sports	Y1 and Y2 Sports	Y3 and Y4 Sports	Y5 and Y6 Sports
19 th June 2-3 pm	20 th June 2-3 pm	21 st June 2-3 pm	22 nd June 2-3 pm

Fairtrade Business Week

Do you have links to companies or charities that support Fair Trade principles? If so, Mrs Rever would love to hear from you as we would like you to be involved with our Business Enterprise Week this year. Some of the ways you might be able to help:

- providing fair trade resource links
- helping to lead an assembly presentation to pupils or supporting a debate team on the topic
- sharing your experiences and knowledge with a class
- providing a question and answer forum for groups of pupils about Fair Trade.

Marie Curie

Y6 pupils will be selling Marie Curie Daffodils during the next two weeks. They will circulate round classrooms with a donation box for pupils during the school day.

Lent Rise School, Coulson Way, Burnham, Bucks, SL1 7NP 01628 662913
office@lentrise.bucks.sch.uk www.lentriseschool.co.uk

Lent Rise School Newsletter

March 2017

Issue 60
Page 2



Early Years Phonics Workshops Volunteers

Mrs Dear, our phonics lead teacher, is running Early Years phonics workshops for parents on Monday 13th March. If you have not received the letter with these details, please phone or email the office.

We are lucky to have 14 parent volunteers currently working with us at Lent Rise which is amazing as this provides extra support, for example, listening to children read in every year group across the school. If you would like to find out more about how you can support as a parent volunteer, please contact Mrs Barnard in the school office.

Long Service Award



I would like to thank Judith Foster for her contribution to the school and community as she steps down as a governor at Lent Rise School following 24 years' service.

French Play

Mrs Springford has organised for Years 4, 5 and 6 to watch a Play in French titled 'Shipwrecked in France' on Friday 31st March. This is an amazing opportunity for the children to develop their passion for the French language as well widening their cultural experiences.

Hair Styles/ Accessories

Please ensure that your child's hairstyle/cut is not extreme and that all accessories are suitable for school e.g. not too large or garish in colour!

Outdoor Gym

The outdoor gym has been cordoned off whilst the mud around the apparatus makes it too slippery for safe use. Please respect this before and after school for the safety of your children.

EYFS Free Flow Area



Thank you to the parent and pupil volunteers who, despite the inclement weather last week, helped the team to revamp the area- it looks amazing and the children are enjoying their exciting free flow space.

World Book Day

Miss Johns and Mr Waldeck will be running an extra special World Book Day story session tomorrow, welcoming Early Years parents in to read with their children. Please contact the school office for more information.

Sports News

Girls' Football



The year 5/6 girls' football team played in a tournament at Burnham Grammar where they played against Year 5 to Year 7s and came third out of six.

Badminton Tournament



Y3 and Y4 pupils have recently participated in a Badminton tournament where there was a focus on skill alongside teamwork. The pupils demonstrated excellent team skills and thoroughly enjoyed the event; recommending it to others to participate in next year!

Lent Rise School, Coulson Way, Burnham, Bucks, SL1 7NP 01628 662913
office@lentrise.bucks.sch.uk www.lentriseschool.co.uk



What have we been up to? Early Years Update

We have been really busy this year! Here is what we have been up to ...

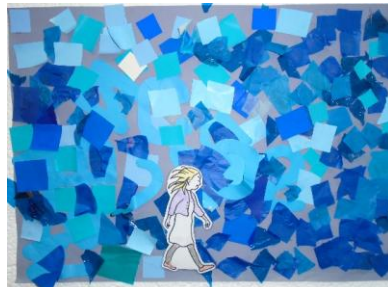
Sandwich Making

After reading the Lighthouse Keepers' Lunch we made our own sandwiches. We talked about the importance of giving clear instructions and also discussed why we should follow directions carefully.



Going on Bear Hunt

We love Micheal Rosen's book *We're Going on a Bear Hunt* and made some wonderful collages.



Reading Corner

We really enjoy reading in Early Years and now have a relaxing book corner where we can sit and read our favourite stories with our friends.





Parent Questionnaire Feedback

Our parent questionnaire response deadline was last Friday. The data from the responses is presented on the next few pages.

109 responses were received in total this year. This number is significantly lower than last year when we received 190 responses. The feedback below has been presented in number form, not percentages, to show you the numbers out of the 109 responses received. Some people skipped questions so the total does not always equate to 109. Where comments were added, between 2 and 20 comments were received and these have all been logged and reviewed.

Comments received were under varying response headings and, as in previous years, I thank you all for taking the time to complete answers and add comments and we very much appreciate that we have asked many questions of you recently on this, ICT and homework. I have added an action section to this summary outlining immediate and longer term outcomes and actions as a result of your responses and your feedback.

My child is usually happy at school.

Strongly Agree	Agree	Don't know	Disagree	Strongly disagree
41	66	0	1	0

My child feels safe at this school.

Strongly Agree	Agree	Don't know	Disagree	Strongly disagree
45	61	2	0	0

My child is well looked after at this school.

Strongly Agree	Agree	Don't know	Disagree	Strongly disagree
41	65	2	0	0

Lent Rise School Newsletter

March 2017



Issue 60
Page 5

In general, staff and pupils have a good relationship.

Strongly Agree	Agree	Don't know	Disagree	Strongly disagree
32	67	6	1	0

I am confident that my child receives support if he/she is upset at school.

Strongly Agree	Agree	Don't know	Disagree	Strongly disagree
23	65	16	2	0

The school is led and managed well.

Strongly Agree	Agree	Don't know	Disagree	Strongly disagree
33	64	7	2	0

I am happy with the arrangements that were made for my son or daughter to settle in when he/she started at school.

Strongly Agree	Agree	Don't know	Disagree	Strongly disagree
45	55	4	2	0

My child makes good progress at this school.

Strongly agree	Agree	Don't know	Disagree	Strongly disagree
26	64	11	5	0

Lent Rise School, Coulson Way, Burnham, Bucks, SL1 7NP 01628 662913
office@lentrise.bucks.sch.uk www.lentriseschool.co.uk

Lent Rise School Newsletter

March 2017

Issue 60
Page 6



My child is taught well at this school.

Strongly agree	Agree	Don't know	Disagree	Strongly disagree
26	63	16	1	0

My child knows how well they are doing with their work.

Strongly agree	Agree	Don't know	Disagree	Strongly disagree
16	51	34	3	0

My child is aware of school rules and what is expected of them in terms of behaviour.

Strongly agree	Agree	Don't know	Disagree	Strongly disagree
40	63	1	0	0

My child receives appropriate homework for their ability.

Strongly agree	Agree	Don't know	Disagree	Strongly disagree
11	72	6	13	2

Staff explain how I can help my child at home.

Strongly agree	Agree	Don't know	Disagree	Strongly disagree
10	64	13	16	1

The school has high expectations for my child.

Strongly agree	Agree	Don't know	Disagree	Strongly disagree
16	41	37	7	1

Lent Rise School, Coulson Way, Burnham, Bucks, SL1 7NP 01628 662913
office@lentrise.bucks.sch.uk www.lentriseschool.co.uk

Lent Rise School Newsletter

March 2017

Issue 60
Page 7



The school works to ensure pupils are well behaved.

Strongly agree	Agree	Don't know	Disagree	Strongly disagree
18	72	8	2	0

The school is doing enough to prevent bullying.

Strongly agree	Agree	Don't know	Disagree	Strongly disagree
9	34	54	5	0

If answered 'Don't know' to above

	Response Percent	Response Count
I have no concerns in this area	40.74%	22
Further information would be helpful	64.81%	35

The school is doing enough to prevent racism.

Strongly agree	Agree	Don't know	Disagree	Strongly disagree
10	35	55	1	1

If answered 'Don't know' to above

	Response Percent	Response Count
I have no concerns in this area	50.0%	28
Further information would be helpful	53.57%	30

Lent Rise School, Coulson Way, Burnham, Bucks, SL1 7NP 01628 662913
office@lentrise.bucks.sch.uk www.lentriseschool.co.uk

Lent Rise School Newsletter

March 2017

Issue 60
Page 8



The school is doing enough to prevent antisocial behaviour

Strongly agree	Agree	Don't know	Disagree	Strongly disagree
13	44	44	1	0

If answered 'Don't know' above

	Response Percent	Response Count
I have no concerns in this area	38.64%	17
Further information would be helpful	65.91%	29

The school promotes a healthy and balanced lifestyle.

Strongly agree	Agree	Don't know	Disagree	Strongly disagree
16	72	7	5	1

The school is helping my child become mature and independent.

Strongly agree	Agree	Don't know	Disagree	Strongly disagree
20	68	12	1	0

Good work is rewarded/celebrated.

Strongly agree	Agree	Don't know	Disagree	Strongly disagree
31	60	5	3	1

Lent Rise School, Coulson Way, Burnham, Bucks, SL1 7NP 01628 662913
office@lentrise.bucks.sch.uk www.lentriseschool.co.uk

Lent Rise School Newsletter

March 2017

Issue 60
Page 9



School security is good.

Strongly agree	Agree	Don't know	Disagree	Strongly disagree
29	61	8	2	0

The school responds to any concerns I raise.

Strongly agree	Agree	Don't know	Disagree	Strongly disagree
22	67	9	2	0

I receive useful information from the school about my child's progress.

Strongly agree	Agree	Don't know	Disagree	Strongly disagree
17	61	10	12	0

The school is well looked after.

Strongly agree	Agree	Don't know	Disagree	Strongly disagree
31	61	6	2	0

I would recommend this school to another parent.

Answer Options	Response Percent	Response Count
Yes	98%	98
No	2%	2

The major strength the school has is

There were 62 responses and the main themes were:
Positive community feeling, friendly and more responsive communications, happy children and a dedicated team.

The next step for the school is

There were 53 responses and the main themes were:
Good to Outstanding Ofsted, learning clubs, improve lining up routines and increase parental involvement.

Lent Rise School, Coulson Way, Burnham, Bucks, SL1 7NP 01628 662913
office@lentrise.bucks.sch.uk www.lentriseschool.co.uk

Lent Rise School Newsletter

March 2017

Issue 60
Page 10



The school was inspected by Ofsted in February 2015. What changes have you seen since the inspection?

There were 44 responses and the main themes were:

Staff presence on the playground, hot meals, new office, breakfast and afterschool clubs.

Do you like the recent changes to our newsletter, which include an update from individual year groups?

Answer Options	Response Percent	Response Count
Yes	92%	91
No	1%	1

Are there other features you would like to see regularly in our newsletter?

Other suggestions were including house point totals in the newsletter and staff biographies when new classes are communicated.

How many school events have you attended in the last year (including performances, workshops, open evenings)?

Answer Options	Response Percent	Response Count
1	5.2%	6
2	19.6%	20
3	19.6%	19
4	23.7%	23
5	12.4%	12
More than 5	19.6%	19
0	0.0%	0

How many PTA events have you/your children attended in the last year (including fairs, film night, disco, AGM)?

Answer Options	Response Percent	Response Count
1	12.6%	12
2	18.9%	18
3	31.6%	30
4	10.5%	11
5	11.6%	11
More than 5	13.7%	13
0	1.1%	2

Lent Rise School, Coulson Way, Burnham, Bucks, SL1 7NP 01628 662913
office@lentrise.bucks.sch.uk www.lentriseschool.co.uk



I would like further information to be available to parents about

There were 25 responses and the main themes were:

Anti-bullying, supporting children with special education needs and how parents can help children at home.

I would like to talk to the relevant person about my answers to this questionnaire

There were 5 respondents and all will, where contact details have been given, be contacted shortly by the relevant person or Mrs Watson.

The Governors have reviewed all feedback comments in detail and have incorporated many aspects that arose into action points for the school as noted below. The Governors would like to share that although there were fewer respondents than last year, the breakdown shows a positive shift in feedback and many of you shared comments of praise and gratitude. This feedback has been insightful and we have learnt about the ways you feel we are helping to shape the future of the school, as well as the areas you feel we need to look at further.

Outcomes and Actions

- We are delighted that many of you have acknowledged some of the changes we have implemented since the last Ofsted inspection, including a focus on assessment and teaching and learning to support the outcomes for all pupils, as well as the other items mentioned above. We will share in a future newsletter more information on our journey from good to outstanding as with many of yourselves, this is the ambition our staff and governors hold.
- Future editions of the governors' newsletter will be circulated with further information for you, to share governor skills and experience, which support our ambition towards Outstanding.
- As mentioned following the homework survey, we will review and implement relevant adjustments for September 2017.
- We have begun investigating how to renovate and improve the outside toilets.
- The Early Years team will consider some excellent suggestions to support settling in arrangements.
- We will provide information on our reward and prize systems in an upcoming newsletter.
- We will provide further information on standards and what is good attainment, alongside expectations for each year band and information on setting.
- We are delighted that many of you are pleased with the transition from Summer to Spring Consultation evenings to support parent-teacher communication. We will also continue to encourage and welcome parents who wish to speak to their child's class teacher in between consultation times.
- We will provide information on how reading and library systems operate across the school.
- We will continue to do our best to limit the use of supply teachers.
- We will implement further systems to support enhancing behaviour during lining up and provide more information on anti-bullying.
- We will speak to the PTA regarding the possibility of providing Key Stage 2 fruit.
- We will continue to welcome volunteers to support learning.
- We will pass on meals feedback (praise and areas for improvement) to Dolce.

Lent Rise School Newsletter

March 2017



Issue 60
Page 12

Term Dates

Spring Term 2017	Thursday 5 th January Tuesday 21 st February Inset Days	Friday 10 th February Friday 31 st March Wednesday 4 th January Monday 20 th February
Summer Term 2017	Tuesday 18 th April Monday 5 th June Inset Day Early May Bank Holiday	Thursday 25 th May Friday 21 st July Friday 26 th May Monday 1 st May
Autumn Term 2017	Wednesday 6 th September Monday 30 th October Inset Days	Friday 20 th October Tuesday 19 th December Monday 4 th September Tuesday 5 th September
Spring Term 2018	Thursday 4 th January Monday 19 th February Inset Day	Friday 9 th February Thursday 29 th March Wednesday 3 rd January
Summer Term 2018	Monday 16 th April Monday 4 th June Inset Days Early May Bank Holiday	Friday 25 th May Friday 20 th July Monday 23 rd July Tuesday 24 th July Monday 7 th May

Diary Dates 2017

Inset Days - (staff training days)	Monday 20 th February, Friday 26 th May
PTA Pupil Film night	Years 1, 2 and 3: Friday 3 rd March
Spring Parent Consultation Week	Week commencing 6 th March
PTA Reps Meeting with Mrs Watson	Thursday 2 nd March at 9.15 am
World Book Day (see next item date below)	Thursday 2 nd March
Book Character Dress up Day (non uniform)	Friday 3 rd March
Class and Group Photographs	Wednesday 8 th March
EYFS phonics workshops	Monday 13 th March 9.30, 2.30 and 3.30pm
PTA Rep Forum Meetings	Monday 13 th March at 9.30am
Red Nose Day - Non uniform day	Friday 24 th March
Y6 SATS Week	Week commencing 8 th May
Y2 SATs Month	Month of May
Phonics Screening Week	Week commencing 12 th June
Business Week in School - Fairtrade theme	Week commencing 3 rd July
Business Enterprise Sales Afternoon	Friday 7 th July
End of Year Pupil Reports Sent Home	Friday 7 th July

Please note that all dates are subject to change.

Lent Rise School, Coulson Way, Burnham, Bucks, SL1 7NP 01628 662913
office@lentrise.bucks.sch.uk www.lentriseschool.co.uk