

# DEAN QUARRY



## CLIENT

**Client:** CEMEX  
**Location:** Dean Point, The Lizard  
**Country:** UK



## VALUE ADDED

A vital submission to ensure the maintenance of the existing permission for mineral extraction, potentially using an existing jetty for the export of mineral by ship. The site has since been sold by the client providing a return on investment.



## SERVICES

Landscape and Visual Impact Assessment  
Zone of Theoretical Visibility mapping  
Viewpoint photography  
Landform modelling  
Landform sections  
Consideration of mitigation options

### PROJECT BACKGROUND

Dean Quarry is located on the south Cornish coastline, within the Cornwall Area of Outstanding Natural Beauty (AONB). It also lies adjacent to a complex archaeological landscape of artefact scatters, settlements and field systems ranging in date from the Mesolithic to the Early Medieval period.

It was essential to illustrate that the screened nature of the existing quarry was maintained by the proposed development.

The South West Coast Path runs between the main plant buildings and the coastline and jetty.

### OUR ROLE

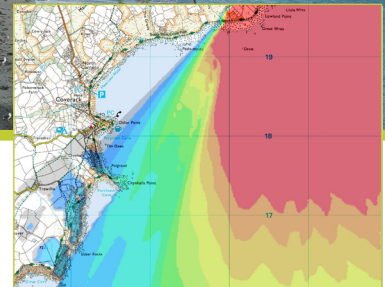
The landscape team led by Mark Jones was commissioned to undertake a Landscape and Visual Impact Assessment (LVIA) of the proposed development.

The development comprised the continued working of the southern quarry void utilising a small mobile processing plant and

continued exportation of mineral either by road or sea. The development also included for the removal of the majority of the existing large scale processing plant buildings, significantly reducing the landscape and visual impacts of the quarry, particularly for users of the South West Coastal Path and viewers at sea.

Demonstration of the benefits of proposals was important in relation to views from at sea, with evidence provided by computer based visualisation.





The sensitivity of the surrounding landscape was considered to be high, partly due to the level of value associated with its national designation.

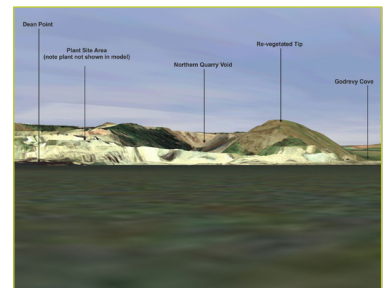
It was quickly established through the LVIA that local landform provided a high degree of enclosure, screening most potential

views of the site and helping to justify the limited level of change that was predicted. Additional mitigation of the site was also explored, including the rationalisation of signage, together with planting/mounding for the western boundary of the site.

Linking with the ecological assessment, it was necessary to retain certain buildings due to the presence of bat roosts.



→ “Assessment delivered on budget, on time and accepted by Mineral Planning Authority at face value for a project where landscape issues were a major concern.”



Mark Jones  
T: +44 (0)1743 239 250  
mjones@slrconsulting.com

[www.slrconsulting.com](http://www.slrconsulting.com)