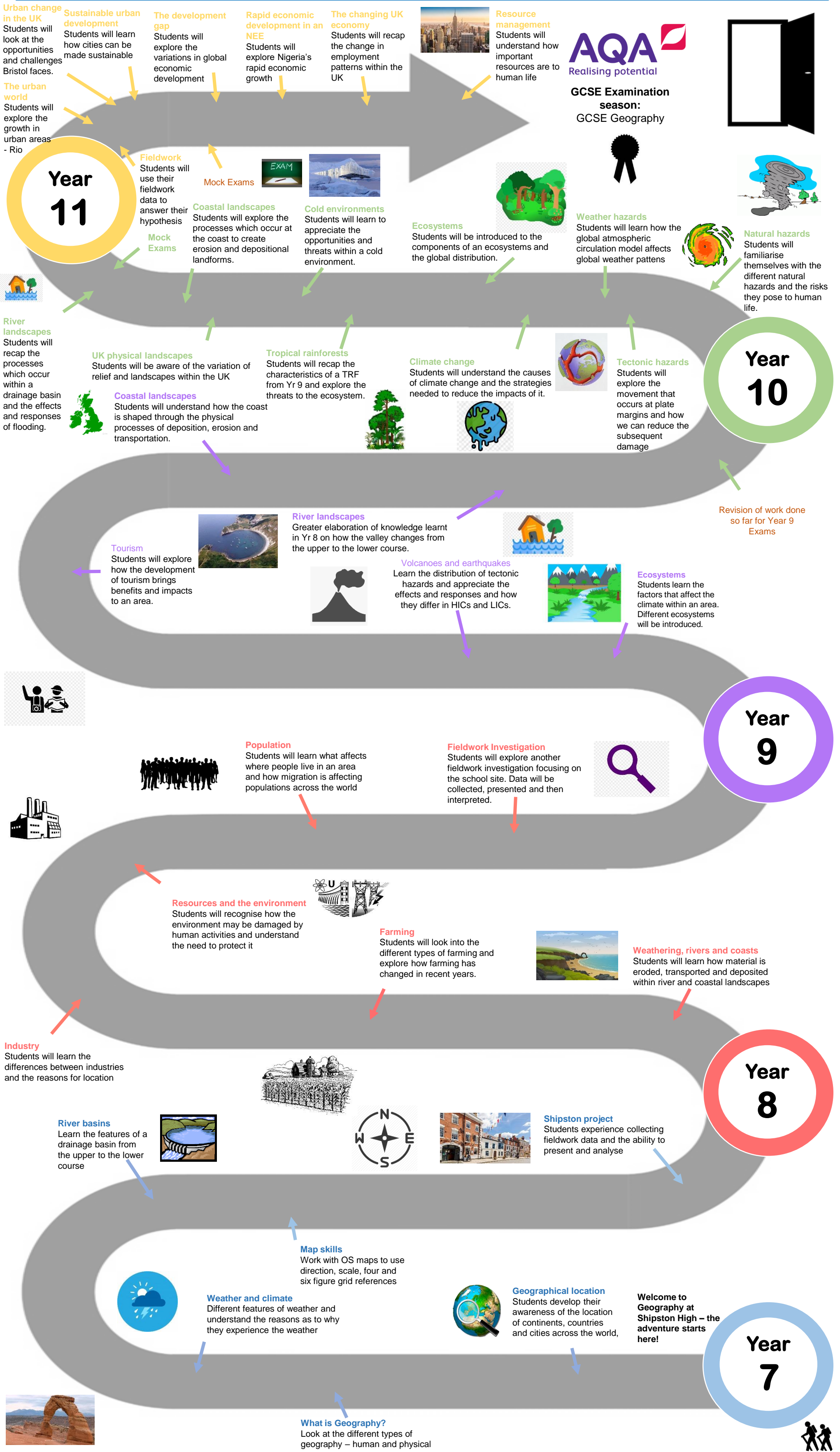




Shipston High: Geography Curriculum



This curriculum map is being phased into the department with projected completion due 2020-2021 – some areas subject to change



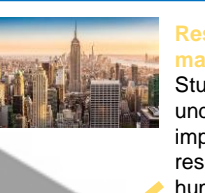
Urban change in the UK
Students will look at the opportunities and challenges Bristol faces.

Sustainable urban development
Students will learn how cities can be made sustainable

The development gap
Students will explore the variations in global economic development

Rapid economic development in an NEE
Students will explore Nigeria's rapid economic growth

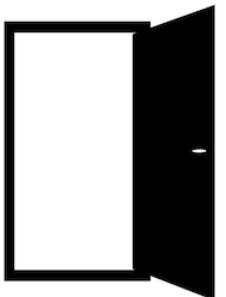
The changing UK economy
Students will recap the change in employment patterns within the UK



Resource management
Students will understand how important resources are to human life



GCSE Examination season:
GCSE Geography



The urban world
Students will explore the growth in urban areas - Rio

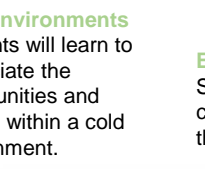
Fieldwork
Students will use their fieldwork data to answer their hypothesis

Mock Exams



Coastal landscapes
Students will explore the processes which occur at the coast to create erosion and depositional landforms.

Cold environments
Students will learn to appreciate the opportunities and threats within a cold environment.



Ecosystems
Students will be introduced to the components of an ecosystems and the global distribution.



Weather hazards
Students will learn how the global atmospheric circulation model affects global weather patterns



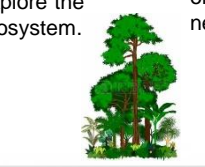
Natural hazards
Students will familiarise themselves with the different natural hazards and the risks they pose to human life.

River landscapes
Students will recap the processes which occur within a drainage basin and the effects and responses of flooding.

UK physical landscapes
Students will be aware of the variation of relief and landscapes within the UK

Coastal landscapes
Students will understand how the coast is shaped through the physical processes of deposition, erosion and transportation.

Tropical rainforests
Students will recap the characteristics of a TRF from Yr 9 and explore the threats to the ecosystem.



Climate change
Students will understand the causes of climate change and the strategies needed to reduce the impacts of it.



Tectonic hazards
Students will explore the movement that occurs at plate margins and how we can reduce the subsequent damage

Year 10

Revision of work done so far for Year 9 Exams

Tourism
Students will explore how the development of tourism brings benefits and impacts to an area.



River landscapes
Greater elaboration of knowledge learnt in Yr 8 on how the valley changes from the upper to the lower course.

Volcanoes and earthquakes
Learn the distribution of tectonic hazards and appreciate the effects and responses and how they differ in HICs and LICs.



Ecosystems
Students learn the factors that affect the climate within an area. Different ecosystems will be introduced.

Year 9



Population
Students will learn what affects where people live in an area and how migration is affecting populations across the world

Fieldwork Investigation
Students will explore another fieldwork investigation focusing on the school site. Data will be collected, presented and then interpreted.



Resources and the environment
Students will recognise how the environment may be damaged by human activities and understand the need to protect it



Farming
Students will look into the different types of farming and explore how farming has changed in recent years.



Weathering, rivers and coasts
Students will learn how material is eroded, transported and deposited within river and coastal landscapes

Industry
Students will learn the differences between industries and the reasons for location

River basins
Learn the features of a drainage basin from the upper to the lower course



Shipston project
Students experience collecting fieldwork data and the ability to present and analyse

Year 8



Weather and climate
Different features of weather and understand the reasons as to why they experience the weather

Map skills
Work with OS maps to use direction, scale, four and six figure grid references



Geographical location
Students develop their awareness of the location of continents, countries and cities across the world,

Welcome to Geography at Shipston High – the adventure starts here!

Year 7



What is Geography?
Look at the different types of geography – human and physical

