

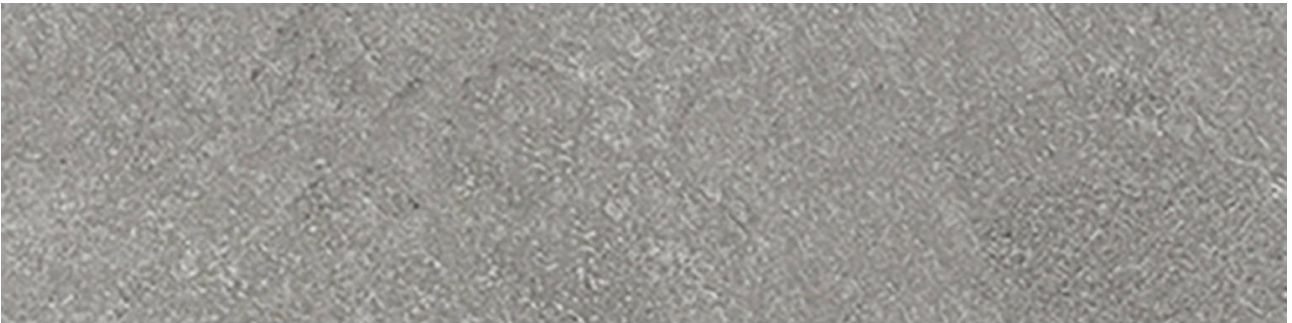


---

**PRODUCT**  
**LINCOLN LIGHT GREY 3X12 BULLNOSE**

---

Tile | 3"x12" | Porcelain



**GRAPHIC VARIETY**



**TECHNICAL DATA**

CODE: QUME-LI-SB  
NAME: Lincoln Light Grey 3x12 Bullnose  
SERIES: Metro  
SIZE: 3"x12"  
FINISH: Matt  
LOOK: Stone Look  
EDGE: Rectified  
FAMILY: Tile  
FROST RESISTANCE: Yes  
STYLE: Contemporary  
SUITABLE FOR: Indoor  
TYPOLOGY: Porcelain  
TYPE OF PIECE: Bullnose  
USE: Floor and Wall

**PACKING**

Size	Product type	BOX			PALLET		
		pcs	sqft	lb	boxes	sqft	lb
3"x12"							

**WARNING** The information contained in this packing list is for guidance only, the contents of the packing may vary. Please consult our sales representatives for an exact list.