











# ABBEYHORN

E N G L A N D

Have nothing in your houses  
that you do not know to be useful,  
or believe to be beautiful.

William Morris  
Craftsman, Designer & Poet  
1834-1896









## Introduction

In a world where so much is artificial, Abbeyhorn serves as a reminder of just how beautiful natural materials can really be. Established in 1749, we are the last remaining horn works in Great Britain and have recently celebrated our 275<sup>th</sup> anniversary.

Our skilled Hornworkers use generations of knowledge and skill to handcraft fine giftware from both exquisitely coloured Oxhorn and ruggedly charming Stag Antler – each finished item being entirely unique.

This catalogue showcases the breadth and depth of our offerings – whether you are looking for rugged Viking-style drinking vessels, or something more refined such as our Sterling Silver cufflinks, you are sure to find the ideal products within these pages. Each individual item reflects our passion for craftsmanship and our respect for the natural material that we work with, resulting in a collection of unique items that celebrate the natural elegance of horn, from luxurious grooming accessories to bespoke homeware and beyond.

Abbeyhorn's commitment to excellence extends beyond our products. We are dedicated to sustainability and ethical practices, ensuring that our processes have minimal impact on the environment. By choosing Abbeyhorn, you are not only investing in a piece of heritage but also supporting a company that values the planet and its resources.

Horn is a fantastic natural material to work with – it is the original, organic plastic! Being a waste product, it is ethically sourced and is exceedingly strong and durable. It responds easily to heat and can be shaped; it doesn't carry flavour, making it great for bowls and spoons, and it can be thick enough to create a multitude of shapes from single solid pieces.

We are proud to serve a global community of discerning customers who appreciate the artistry and tradition behind our products. Whether you are a long-time admirer and previous client of Abbeyhorn or discovering us for the first time, we invite you to explore our catalogue and experience the timeless appeal of horn.

Thank you for considering our wonderful Abbeyhorn products. We look forward to being part of your journey, offering you a range of distinctive items that are as unique and enduring as the traditions that they come from.



Paul Cleasby  
Director



# Our History

Like anything over 275 years old, Abbeyhorn has seen a considerable amount of change since first putting horns out of the door during the reign of King George II.

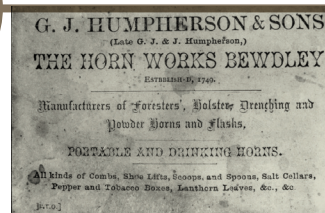
This timeline illustrates some of the major changes, both internal and external, that have taken place across our history...

1749

G. J. Humpherson founds *The Horn Works Bewdley* in Worcestershire, producing a vast range of household horn items and supplying powder horns to the British army.

1776

The USA declares itself a free and independent nation



1770  
Captain Cook discovers Australia



1923

Company sold to Percy Leresche, who renames the company "**The Abbey Horn Works**". Leresche keeps the company at Gloucester for 9 more years before moving it to Kendal.

First talking picture 'The Jazz Singer'

1927

1920



*The Horn Works* is sold to a relative of the Grove family of Halesowen, famous for their horn button factory founded in the 16<sup>th</sup> century. James Grove & Sons began business in 1857, manufacturing horn and hoof buttons.

1932

Percy Leresche merges the firm with the old horn comb works owned by James Troughton and Sons located at Bela Mill, Milnthorpe, which remains there to this day manufacturing plastic combs.

Mr & Mrs John Barnes buy the company from Percy Leresche who continued to work at the horn works until his death a few years later. During this period, the export market flourished and as a recognition for this John Barnes is awarded an MBE. The company name is changed to *Abbey Horn of Kendal Ltd.*

1955

1945  
End of Second World War



## Moving forward ...

Abbeyhorn is marching on into the future, always looking to develop new products or alter existing designs in ways that fit the demands and desires of the modern customer. But we still cut, saw, mould, shape and polish our horns the old way, and we will always bring with us our tradition, provenance and skills – that is something that no amount of time has changed, and it never will.

Abbeyhorn celebrates its **275th birthday**, coming through the global pandemic with new ideas and a drive to get back down to business.

Abbeyhorn goes digital and launches its first website, allowing individuals from all over the world to easily acquire their own handcrafted piece of horn or stag ware.

2024

2011



British army uses powder horns made at **The Horn Works Bewdley** during the War of Independence.

Florence Nightingale takes Abbeyhorn beakers and lanterns with her to the Crimean war.



1863  
The Football Association was founded in UK.

1780



1819  
Queen Victoria born

1854

1876  
First telephone call

1887  
Sherlock Holmes first appears in writing

The factory relocates to Gloucestershire, near to the site of Llanthony Abbey where horn had been worked by the monks during the 17<sup>th</sup> century, the company is renamed **The Horn Works**.



1912

1918

First World War

1914

1901  
Queen Victoria dies after a 63-year reign



Man lands on the moon  
1969

1980

Paul Cleasby joined the team at Abbey Horn of Kendal as an apprentice horn worker at the age of 16. It wasn't long before his management skills were noticed and at the age of 21 he became foreman.

1989  
The fall of the Berlin Wall

1991

Paul Cleasby buys the company from John Barnes and it is moved a few miles away to the small village of Holme, changing its name to **Abbeyhorn of Lakeland**.

1998

Paul buys the manufacturing side of the company **Horncraft** from the Buyers' family of Irvine, Scotland. The two companies, were then merged and the new company's name changed to just **Abbeyhorn**.



2008

Enjoying a coffee prior to a business meeting at the Mitsukoshi department store in Tokyo, Paul Cleasby doodles a new logo design on a napkin. The design reflects a more corporate image for the company and is met with widespread approval. Abbeyhorn also becomes a limited company, changing its name to **Abbeyhorn Ltd.** – the name it uses to this day!

2004  
Facebook launched



# Natural Materials

Whilst Cow Horn is the original and main material that we use to bring you our extensive collection of items, we also use a range of other natural products that each bring their own unique qualities and beauty to the table.

## Ethical

We take pride in ensuring that none of our materials require harm to animals solely for our purposes.

All of our horns - whether from cows or rams - are sourced as by-products of the food industry or from animals that have passed naturally.

## Recycled

As by-products, the majority of our materials would be destined for landfill if they were not obtained by us for crafting into our goods. Our craft prevents unnecessary wastage and also provides an income for more people around the world.

## Sustainable

Our natural materials are sustainably sourced from farmed or carefully monitored wild populations – as in the case of our deer antler – ensuring no species are ever threatened. The materials grow naturally and make a truly ecological product.

## Cow Horn

### *Source: West Africa*

Domestic cattle here in the UK are selectively bred with shorter horns, and many are de-horned at a young age for the safety of both people and their fellow cattle, and often due to constraints with space. Instead, we use horn from the iconic Ankole cattle of West Africa, where their free-roaming lifestyle allows for their large, robust horns to grow to incredible sizes. The large surface area that the horns provide also gives the cattle a way to effectively cool down in the near-equatorial heat – this is the same reason that the elephants there have big ears!

Horn is composed of two layers: a bony inner core and a keratinous outer sheath (the same protein found in hair and nails), which is mostly hollow except for a small solid section at the tip. The remarkable outer-part can not only be shaped, but it becomes pliable when heated, allowing us more ways to craft it into beautiful, unique pieces.

In its raw state, horn appears rough and dull, but through careful sanding and polishing, it obtains a smooth, glossy finish that reveals all of its natural colours. Ranging from creamy tones to striking browns and blacks, each piece is entirely unique – no two will ever be alike.





# Rams Horn

## Source: Cumbria

Abbeyhorn uses rams horn sourced predominantly locally from Cumbria, or from slightly further afield in Wales as necessary, primarily from mature Swaledale rams (with occasional Herdwick, Cheviot, and Portland breeds). Like cow horn, it features a growing bony core surrounded by keratin - ranging from 3mm thick in young rams to over 15mm in older animals.

The distinctive helical horns taper to a triangular cross-section, typically in creamy yellow tones with occasional black streaks. When polished, their naturally ridged surface transforms to a glass-like finish. We use this versatile material for making our traditional walking sticks and crooks, but we keep raw stock available for craftspeople creating buttons, shofarot, or bows.



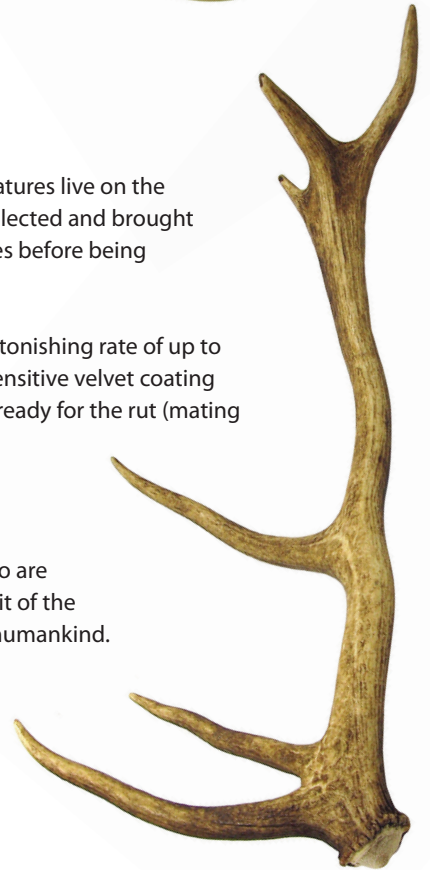
# Antler

## Source: Scotland

We get our stag antler from Scotland's Red Deer, the UK's largest deer species. These regal creatures live on the parks and estates of the Highlands where they shed their antlers each year, which are then collected and brought to us. Only stags grow these remarkable structures – emerging each spring as velvety branches before being dropped the following winter in an endless regenerative cycle.

Antler is not horn. Antlers are in-fact nature's fastest-growing bone tissue, developing at an astonishing rate of up to 2.5cm per day during Summer. Their growth depends on nutrition rather than age, with the sensitive velvet coating protecting them during development. By Autumn, the velvet sheds to reveal calcified antlers ready for the rut (mating season), before being naturally discarded - making them the ultimate sustainable material.

Antlers feature a dense outer layer over a honeycombed marrow-like centre, and they vary in colour from dark brown to creamy white (influenced by diet and habitat). Much like our other natural materials, each piece tells its own story through distinctive textures and tones – no two are ever identical. This organic variability ensures that every crafted item carries the untamed spirit of the Highlands and carries the history imbued in a material that has been used since the dawn of humankind.



# Cow Bone

## Source: China

Our cow bone items are sourced from China, where they take shinbones from domestic cattle that the meat industry discards to create a wealth of products – Abbeyhorn obtains only selected pre-cleaned and processed items from this process. Composed primarily of calcium carbonate, bone's unique honeycomb structure provides exceptional strength while remaining surprisingly lightweight.

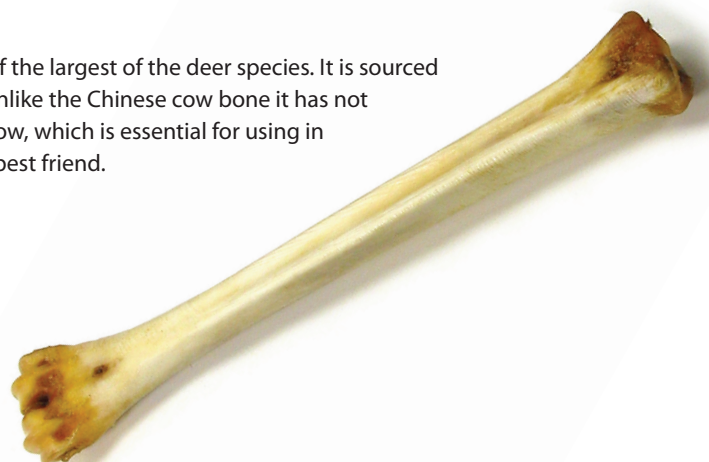
We use exclusively the densest shinbones, prized for their thick outer layer of compact bone tissue with minimal porosity.

Though resembling ivory, bone distinguishes itself through its warmer tone and distinctive surface character. When polished, the natural tunnels within the material create subtle pits and fine linear textures. This organic canvas transforms beautifully with use – our bone products begin with a milky-white lustre and smooth, flowing contours, then gradually develop a gentle honey-gold hue as they absorb natural oils from handling.

# Deer Bone

## Source: Scotland

Like our antler, Abbeyhorn uses bone from Scottish Red Deer, one of the largest of the deer species. It is sourced as a natural by-product of the Scottish deer farming industry, and unlike the Chinese cow bone it has not been processed before coming to us, so still contains the fatty marrow, which is essential for using in leatherwork. Once worked, these tools become your leather shoe's best friend.





# Information Pages

Many of our products can be personalised with optional upgrades, including custom engraving and elegant presentation cases or boxes to complement your purchase. On these pages you can discover our premium services designed to enhance and protect your Abbeyhorn pieces.

## Horn Colour

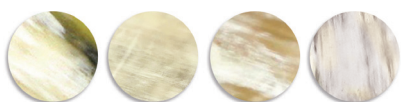
Cow horn displays remarkable diversity in colouration, influenced by multiple interconnected factors. The specific segment of horn used, the particular shipment's origin, and ultimately the West African cattle's regional environment, lifestyle, and diet all contribute to these beautiful natural variations. Each element in this chain – from pasture to workshop – leaves its unique imprint on the horn's character.

Horn is more often than not darker at the solid tip, gradually changing to lighter tones as you go down the horn towards the hollow mouth. Light and coloured tips still occur, but darker tips make up the majority of a group.

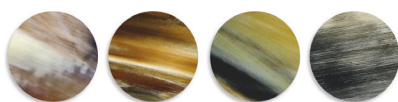
For made-to-order items, we select the best available horn suited to each product – the resulting colours will be whatever they are naturally. When ordering a number of products, a mixture of colours is usually to be expected, but this may not always be the case.

Customers that wish to specify a particular colour palette for their products have the option to choose from Light, Medium or Dark horn – we will then find horn from our store specifically for your items and will only send you ones that fit within the chosen colour-range.

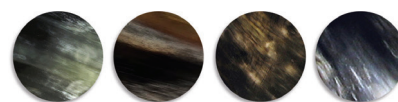
This service is charged at a set percentage on the items for which colour-choice is wanted... current pricing can be found in our Price List.



**Light Horn** – Whites, creams, ambers and other naturally lighter tones constitute this choice – there may be a few darker tones speckled or streaked through, but the predominant colouration will be light.



**Medium Horn** – A mixture of both light and dark colours, with this choice you'll receive striking contrasts and some of horns most captivating natural beauty.



**Dark Horn** – Ranging from almost solid black to dark browns struck through with hints of lighter hues, dark horn often shows surprisingly complex character and can emit a silvery, refined aspect.

## Gift Boxes

Many of our products are available in our signature Abbeyhorn gift boxes – crafted in sleek black with a silver-embossed logo adorning the lid. Inside, each item is nestled in custom black and silver tissue paper, accompanied by an informative Care Card for a refined unboxing experience. These elegant boxes not only enhance the presentation of our products but also serve as beautiful long-term storage and display cases.

**If you wish to order your item in a giftbox then please add the letter 'B' to that item's product code.**



The up-to-date pricing of this service can be found in our current Price List.



Items that are available in a giftbox are denoted in the catalogue by this symbol next to the product.

## Display Cards

A large number of Abbeyhorn products can be supplied on informative display cards. This option is provided free of charge and allows for ease of display as well as informing customers about our history.

**If you wish to have your goods carded then please add the letter 'C' to that item's product code.**



Items that are available carded are denoted in the catalogue by this symbol next to the product.



## Customised Engraving Service

We offer custom engraving on the large majority of our products – you can choose between our complimentary Abbeyhorn 1749 branding or alternatively you can elect to personalise your selected piece with your own unique design for a truly bespoke creation.

Used by companies worldwide to elevate Abbeyhorn products, our custom engraving begins with a one-off setup process. We'll create sample engravings on horn for your approval, before carefully scaling your logo to suit each item. We then offer elegant finishes in black, gold, or silver for a distinctive final touch.

For optimal contrast, we recommend black engraving on lighter horn, and gold/silver on darker horn – though the choice is entirely yours. All Abbeyhorn logos are engraved in black as standard. The costs for our custom service are available in our Price List.



## Leather Product Cases

Select Abbeyhorn products can be complemented by bespoke leather cases – exquisite in their own right, crafted from 100% natural bovine leather and embossed with our silver Abbeyhorn logo. These cases combine elegant protection with sophisticated presentation, offering the perfect finishing touch to your piece.

A selection of our handmade Horn Combs can be paired with fine leather cases, alongside extra special Italian leather pouches designed exclusively for our horn and bone Collar Stay range. These accessories are available for purchase with their matching products or separately. Full details can be found in each product's dedicated section inside this catalogue.







## Shoehorns

12



## Combs & Brushes

16



## Kitchenware

24



## House & Home

38



## Accessories

44



## Gifts

52



## Viking

58



# Contents

## Shoehorns

Standard Tip-Ended Shoehorns .....	12
Premium Tip-Ended Shoehorns .....	12
Stag Antler Handled Shoehorns .....	13
Roe Deer Antler Handled Shoehorns .....	13
Flat & Shaped Shoehorns .....	14

## Combs & Brushes

Combs .....	16
Cased Combs .....	17
Brushing-Up On Your Knowledge .....	17
Hair Brushes .....	18
Silver Disc Brushes .....	18
Shoe Brushes & Shoe Care .....	20
Clothes Brushes .....	21
Shaving & Beard-care .....	22

## Kitchenware

Table Cutlery .....	24
Cutlery Sets .....	26
Boxed Carving & Steak Sets .....	27
Serving Cutlery .....	28
Barware .....	28
Spoons .....	30
Boxed Spoon Sets .....	33
Salad Servers .....	34
Soap Dishes .....	34
Horn Bowls & Trays .....	35
Horn Kitchen Utensils .....	36

## House & Home

Crafting .....	38
Home Office .....	39
Decorations .....	40
Furniture .....	41
Walking & Wading Sticks .....	41

## Accessories

Horn Jewellery .....	44
Buttons & Toggles .....	46
Button Hooks .....	46
Collar Stays .....	47
Cufflinks .....	48
Sterling Silver Cufflinks .....	48

## Gifts

Keyrings .....	50
Magnets .....	52
Small Gifts .....	52
Sgian Dubhs .....	53
Quaichs .....	54
Sporting Accessories .....	54

## Viking

Drinking Horns .....	56
Horn Mugs .....	58
Tots & Cups .....	59
Bugles .....	60
Raw Materials .....	61
Dog Chews .....	64

The products pictured in this catalogue are not shown to scale and serve as representative examples only. Due to the natural variations in colour and thickness inherent to horn, each piece will be uniquely individual.



# Shoehorns





# Shoehorns

A shoehorn is an essential yet often overlooked tool, designed to protect both your shoes and your feet. By guiding the heel smoothly into place, it preserves the shoe's structure, prevents crushing of the counter, and eliminates the need for awkward tugging. Regular use extends the life of fine footwear while adding ease to your daily routine.

Made from our polished cow horn, each one boasts unique patterns and a warm, tactile finish. Horn's inherent strength and flexibility create a shoehorn that's both durable and gentle on footwear – unlike brittle plastic or cold metal alternatives. With proper care, these heirloom-quality pieces will serve generations, and come in a range of shapes and sizes to suit all needs and tastes.

## Standard Tip-Ended Shoehorns

Handy cow horn shoehorns, utilising the solid tip as a natural handle. **Abbeyhorn gift box available** 📦



## Premium Tip-Ended Shoehorns

Iconic amongst our wares, these longer shoehorns are harder to come by but are ideal for those who find it harder to bend.

**Abbeyhorn gift box available** 📦





# Stag Antler Handled Shoeorns

Blending two unique natural materials, our Stag Antler shoeorns have a hand-crafted handle on a cow horn blade.

Abbeyhorn gift box available 📦



# Roe Deer Antler Handled Shoeorns

Both striking and full of character, we use a whole Roe Antler to make the handle for each shoeorn.

**12-14"**  
Product Code: **SHXR**

**14-16"**  
Product Code: **SHCR**

**18-20"**  
Product Code: **SHLR**

**24-26"**  
Product Code: **SHTR**





# Flat & Shaped Shoehorns

Made from the body of a horn, these shoehorns come in a variety of shapes that fulfil different roles.

Abbeyhorn gift box available 📦



## 4" Travel Shoehorn

An ideal size for pockets or bags, our travel shoehorns can go where they're needed.

Product Code: 9-4



## 8" Shoehorn With Leather Thong

A classic design of shoehorn - a must in any shoebox.

Product Code: 9-8



## 12" Thistle End Shoehorn

This shoehorn has a Scottish thistle-shape handle, making it both useful and decorative.

Product Code: M30T



## 8" Shoehorn With Hook End

Handy to hang with the hook handle, an 8" blade but 10" overall.

Product Code: 6-8



## Shoehorns With Handles

Round hollows form a convenient handle for a firm grip.

7" Product Code: 2-7

10" Product Code: 2-10

# Bespoke Products

If you have ideas for your own shape and style of Abbeyhorn product, we do offer a bespoke product service. We are always happy to discuss your design ideas and strive to progress your concepts in a collaborative way, we will then seek to develop samples before advising on the practicality and discussing with you before completing set-up.

This has been a route taken by a number of prestigious customers to obtain a handmade horn product that is truly their own.



Bespoke Leather Smoother



Bespoke Shoe Horn



# Combs & Brushes





# Combs & Brushes

Our Combs & Brushes collection features some of Abbeyhorn's most sought-after pieces. Horn combs – used by humanity for millennia – remain unmatched for their smooth, hair-friendly texture and striking natural colours, each one a conversation piece in its own right.

For our brushes, we take a large variety of shapes and styles from some of the world's finest brushmakers and apply flattened 'plates' of horn to them, before shaping and meticulously polishing to a flawless finish. From hair to shoe to shaving – here you will find a brush to suit your needs in enduring style.

## Combs

Horn Combs that come in a variety of sizes and tooth widths, suitable for many different purposes and hair-types.




 **Large Dressing Table Comb**  
Length = 7"  
Product Code: **C1**



 **Afro Comb**  
Length = 4½"  
Product Code: **AC1**



 **Large Broad Tooth Comb**  
Length = 6½"  
Product Code: **C23**




 **Large Double Tooth Comb**  
Length = 6½"  
Product Code: **C9**




 **Square Double Tooth Comb**  
Length = 6¼"  
Product Code: **C18**




 **Pocket Double Tooth Comb**  
Length = 5¾"  
Product Code: **C10**



 **Pocket Fine Tooth Comb**  
Length = 5¾"  
Product Code: **C7**




 **Pocket Double Tooth Comb**  
Length = 5"  
Product Code: **C11**




 **Small Pocket Broad Tooth Comb**  
Length = 3½"  
Product Code: **HSC**




 **Medium Pocket Broad Tooth Comb**  
Length = 4"  
Product Code: **HSCL**



 **Handled Wide Tooth Comb**  
Length = 7½"  
Product Code: **C21**



 **Handled Broad Tooth Comb**  
Length = 7½"  
Product Code: **C22**

## Combs



**Afro Comb - Wide**  
Length = 3¾"  
Product Code: **HMC**



**Double Sided Nit Comb**  
Length = 3½"  
Product Code: **3395**



**Large Wide Tooth Comb**  
Length = 7"  
Product Code: **C20**

## Cased Combs

A number of our combs are available with their own black leather case, each one embossed with a silver Abbeyhorn logo. A classic and elegant way to both protect and store horn combs, they feature a diagonal slot at the opening for effortless removal of the comb.



**Cased Combs - SLC**  
Length = 112mm  
Sml Broad Toothed Comb Product Code: **HSCCC**  
Med. Broad Toothed Comb Product Code: **HSCLCC**



**Cased Combs - CC**  
Length = 155mm  
Pocket Fine Tooth Comb Product Code: **C7CC**  
5¾" Double Tooth Comb Product Code: **C10CC**  
5" Double Tooth Comb Product Code: **C11CC**



**Cased Combs - LC**  
Length = 175mm  
Lrg. Double Tooth Comb Product Code: **C9CC**  
Square Double Tooth Comb Product Code: **C18CC**  
Broad Double Tooth Comb Product Code: **C23CC**

## Brushing-Up On Your Knowledge

Our brushes are made from either high-quality Beechwood or Pearwood, although we do have a few styles made from Oakwood too. The bristles vary by brush, each one using the type best-suited for their particular end use...

### Bristle

'Hair' from the domestic pig or wild boar is called bristle. These are significantly thicker at the root than at the tip, so harder or softer brushes can be made by using the upper or lower parts of the bristles, depending on the brush's intended use.

### Horse Hair

Coming from the mane or tail, natural horse hair is used across a selection of our brushes. The softness of the mane hair is ideal for shoe-polishing brushes, coming in both light and dark varieties.

## Goat Hair & Hornbeam Pins

We also have brushes that use different natural materials for their business-end... hair from the Chinese long-haired goat is by far the softest across all of our brushes, making it ideal for the heads of babies. Hornbeam pins are used in our single variety of pneumatic brush – their rounded sturdiness offering a gentle pampering of the scalp alongside anti-static properties and heat resistance.



# Hair Brushes

With bristles punched and assembled at small variations in length to catch hair at different levels during brushing, our range of Hair Brushes fit anywhere from pocket to dressing table. **Abbeyhorn gift box available** 📁



## Beechwood & Horn Handled Hair Brush

A classic dressing-table brush with a handle.

Size= 54mm x 180mm

Product Code: **HB2**



## Beechwood & Horn Large Hair Brush

Elegantly shaped, this is a very popular hairbrush.

Size = 50mm x 220mm

Product Code: **HBH**



## Beechwood & Horn Childs Hair Brush

Smaller and gentler, great for younger users.

Size= 45mm x 185mm

Product Code: **CB**



## Pearwood & Horn Large Hair Brush

Lustrous pearwood version of our large hairbrush.

Size= 50mm x 220mm

Product Code: **HBHP**



## Pearwood & Horn 4 Rows Pocket Brush

Portable and accessible for grooming on the go.

Size = 25mm x 155mm

Product Code: **PB1**



## Beechwood & Horn Pocket Hair Brush

Small and featuring hornbeam pins, ideal for handbags.

Size = 45mm x 120mm

Product Code: **PB2**



## Horn & Goat Hair Baby Hair Brush

Luxuriously soft - perfect for babies and delicate scalps.

Size = 45mm x 158mm

Product Code: **HC**



## Pearwood & Horn 3 Rows Pocket Brush

Perfectly sized for beard or moustache grooming.

Size = 125mm x 20mm

Product Code: **PB3**



## Pearwood & Horn Oval Hair Brush

Fits ideally in ones palm for relaxing brushing.

Size = 65mm x 116mm

Product Code: **HB1**

# Silver Disc Brushes

To bring the ultimate luxury to a range of both our shoe and hair brushes, we have styles that feature a solid disc of hallmarked Sterling Silver inset into the horn – perfect for gifting and special occasions. **Abbeyhorn gift box available** 📁



## Pearwood & Horn Small Clothes Brush

Size= 40mm x 130mm

Product Code: **SCBRS**



## Beechwood & Horn Pocket Hair Brush

Size = 45mm x 120mm

Product Code: **PB2S**



## Pearwood & Horn Oval Hair Brush

Size = 65mm by 116mm

Product Code: **HB1S**



# Silver Disc Brushes



## Pearwood & Horn Large Hair Brush

Size= 50mm x 220mm  
Product Code: **HBHPS**



## Beechwood & Horn Handled Hair Brush

Size = 54mm x 180mm  
Product Code: **HB2S**



## Beechwood & Horn Large Hair Brush

Size= 50mm x 220mm  
Product Code: **HBHS**



## Beechwood & Horn Handled Clothes Brush

Size= 200mm x 35mm  
Product Code: **CBRHS**



## Beechwood & Horn Large Clothes Brush

Size = 50mm x 170mm  
Product Code: **CBRLS**



## Beechwood & Horn Childs Hair Brush

Size = 45mm x 185mm  
Product Code: **CBS**



## Horn & Goat Hair Baby Hair Brush

Size = 45mm x 158mm  
Product Code: **HCSI**



## Beechwood & Horn Rectangular Shoe Brush (Dark)

Size= 40mm x 120mm  
Product Code: **SBRSDS**



## Beechwood & Horn Face Brush

Size= 40mm x 70mm  
Product Code: **FBS**



## Beechwood & Horn Rectangular Shoe Brush (Light)

Size= 40mm x 120mm  
Product Code: **SBRSLs**

# Shoe Brushes & Shoe Care

Proper shoe care begins with the right tools – a quality brush and premium polish can add years to your footwear's life. Abbeyhorn's natural brushes, sleeking bones, and traditional deer polishing bones offer an elegant, effective way to preserve your shoes and boots. **Abbeyhorn gift box available** 📺



## Beechwood & Horn Rectangular Shoe Brush

Beechwood shoe brush with soft, light horse hair bristles.  
Size = 40mm x 120mm  
Product Code: **SBRSL**



## Beechwood & Horn Rectangular Shoe Brush

Beechwood shoe brush with soft, dark horse hair bristles.  
Size = 40mm x 120mm  
Product Code: **SBRSD**



## Oakwood & Horn Rectangular Shoe Brush

Large shoe brush with dark bristles and stout oakwood.  
Size = 45mm x 160mm  
Product Code: **SBRLOD**



## Oakwood & Horn Rectangular Shoe Brush

Large shoe brush with light bristles and stout oakwood.  
Size = 45mm x 160mm  
Product Code: **SBRLOL**



## Snake Headed Sleeking Bone

Smooth-out creases and rough surfaces on shoe leather.  
Size = 20mm x 204mm  
Product Code: **SLB**



## Deer Polishing Bones

Full of natural oils to impart shine and restore leather's smoothness.  
Approximately 210-240mm  
Product Code: **DB**



## Beechwood & Horn Suede Brush

A mixture of brass and boar bristles to best care for suede.  
Size = 30mm x 170mm  
Product Code: **SBH**





## Shoe Brushes & Shoe Care



### **Oakwood & Horn Shoe Polish Applicator Dark Bristles**

A small oaken brush with dark bristles for shoe polish.  
Size = 30mm x 170mm  
Product Code: **SPABO**



### **Oakwood & Horn Shoe Polish Applicator Light Bristles**

A small oaken brush with light bristles for shoe polish.  
Size = 30mm x 170mm  
Product Code: **SPAWO**

## Clothes Brushes

Designed for gentle care, each horn clothes brush removes lint and particles of dirt while preserving delicate textiles.

**Abbeyhorn gift box available**



### **Pearwood & Horn Small Clothes Brush**

A smaller version of our large clothes brush.  
Size= 40mm x 130mm  
Product Code: **SCBR**



### **Beechwood & Horn Handled Clothes Brush**

Our most popular brush - ever favoured and reliable.  
Size = 200mm x 35mm  
Product Code: **CBRH**



### **Beechwood & Horn Large Clothes Brush**

This brush has a finger groove to ensure a sturdy grasp.  
Size = 50mm x 170mm  
Product Code: **CBRL**



### **Pearwood & Horn Cashmere Brush**

Large and featuring soft bristles, this brush cares for quality cashmere wool.  
Length = 265mm  
Product Code: **CBR**



# Shaving & Beard-care

From luxurious badger-bristle shaving brushes to delicate moustache combs, our horn grooming collection offers a natural and refined approach to caring for all facial hair. **Abbeyhorn gift box available** 📺



## Super Badger Bristle & Horn Shaving Brush

Super bristle is softer, more luxurious and boasts excellent water retention.  
Size = 35mm x 115mm  
Product Code: **M12P**



## Beechwood & Horn Moustache Brush

Perfect for keeping facial hair groomed, with an iconic shape.  
Size = 82mm x 24mm  
Product Code: **MSB**



## Badger Bristle & Stag Antler Shaving Brush

A touch of class featuring antler and pure badger bristle.  
Size = 33mm x 100mm  
Product Code: **M11**



## Badger Bristle & Horn Shaving Brush

A touch of class featuring cow horn and pure badger bristle.  
Size = 35mm x 105mm  
Product Code: **M11P**



## Super Badger Bristle & Stag Antler Shaving Brush

Super bristle is softer, more luxurious and boasts excellent water retention.  
Size = 110mm x 33mm  
Product Code: **M12**



## Moustache/Eyebrow Comb

Length = 3½"  
Product Code: **E24**



## Moustache Comb With Handle

Length = 3½"  
Product Code: **C24**



## Beechwood & Horn Face Brush

Small beechwood face brush with light, soft boar bristles.  
Size = 40mm x 70mm  
Product Code: **FB**



## Tree Shaped Moustache Comb

Length = 4"  
Product Code: **T24**



# Kitchenware





# Kitchenware

Kitchenware is our largest and most extensive range, showcasing some of Abbeyhorn's most iconic and timeless pieces, with many unique designs for the heart of the home.

## Table Cutlery

Knives for butter, knives for steak, spoons for pudding, forks for cake. Our range of stainless steel cutlery is crafted with cow horn or stag antler handles – these pieces elevate place settings with their unique charm alone. **Abbeyhorn gift box available** 📦



📦  
**Horn Handle Cheese Knife**  
Length = 210mm  
Product Code: **T21P**



📦  
**Stag Antler Handle Cheese Knife**  
Length = 210mm  
Product Code: **T21S**



📦  
**Thistle Ended Horn Handle Cheese Knife**  
Length = 210mm  
Product Code: **T21T**



📦  
**Dinky Knife - Horn**  
Length = 140mm  
Product Code: **T23P**



📦  
**Dinky Knife - Stag Antler**  
Length = 140mm  
Product Code: **T23S**



📦  
**Dinky Knife - Horn - Thistle End**  
Length = 140mm  
Product Code: **T23T**



**Dessert Knife - Horn**  
Length = 200mm  
Product Code: **T39P**



**Dessert Knife - Stag Antler**  
Length = 210mm  
Product Code: **T39S**



**Dessert Fork - Horn**  
Length = 180mm  
Product Code: **T40P**

# Table Cutlery



**Dessert Fork - Stag Antler**  
Length = 190mm  
Product Code: **T40S**



**Dessert Spoon - Horn**  
Length = 190mm  
Product Code: **T41P**



**Dessert Spoon - Stag Antler**  
Length = 190mm  
Product Code: **T41S**



**Steak Knife - Horn**  
Length = 210mm  
Product Code: **T30P**



**Steak Knife - Stag Antler**  
Length = 215mm  
Product Code: **T30S**



**Steak Fork - Horn**  
Length = 180mm  
Product Code: **T31P**



**Steak Fork - Stag Antler**  
Length = 190mm  
Product Code: **T31S**



**Table Knife - Horn**  
Length = 225mm  
Product Code: **T36P**



**Table Fork - Horn**  
Length = 200mm  
Product Code: **T37P**



**Table Knife - Stag Antler**  
Length = 230mm  
Product Code: **T36S**



**Table Fork - Stag Antler**  
Length = 205mm  
Product Code: **T37S**



# Cutlery Sets

Our table cutlery is available in thoughtfully curated sets where the pieces complement one another in both function and style.  
**Abbeyhorn gift box available** 📦



📦  
**Two Piece Polished Horn  
Handle Carver Set**  
Product Code: **T34P**



📦  
**Two Piece Polished Stag Antler  
Handle Carver Set**  
Product Code: **T34S**



📦  
**Three Piece Polished Horn  
Handle Carver Set**  
Product Code: **T33P**



📦  
**Three Piece Polished Stag Antler  
Handle Carver Set**  
Product Code: **T33S**



📦  
**Steak Knife & Fork - Horn**  
Product Code: **T32P**



📦  
**Steak Knife & Fork - Stag Antler**  
Product Code: **T32S**

# Boxed Carving & Steak Sets

We are proud to offer some of our table and serve-ware as sets in luxurious blackened wood boxes – hinged, latched and silver-embossed. These boxes turn their sets into family heirlooms destined to be cherished for generations.



**2 Piece Carver Set - Stag Antler**

Product Code: **T34SB**



**2 Piece Carver Set - Polished Horn**

Product Code: **T34PB**



**3 Piece Carver Set - Stag Antler**

Product Code: **T33SB**



**3 Piece Carver Set - Polished Horn**

Product Code: **T33PB**



**6 Piece Steak Knife Set**

- Stag Antler Product Code: **T32ASB**



**6 Piece Steak Knife Set**

- Polished Horn Product Code: **T32APB**



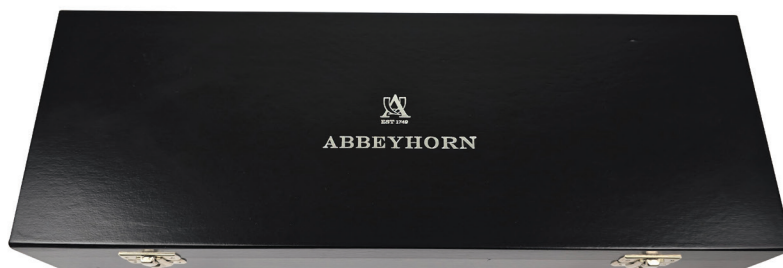
**12 Piece Steak Knife & Fork Set**

- Polished Horn Product Code: **T32PB**



**12 Piece Steak Knife & Fork Set**

- Stag Antler Product Code: **T32SB**





## Serving Cutlery

Items to be treasured for a lifetime – Abbeyhorn serving cutlery blends function and artistry, transforming everyday tools into decorative heirlooms. Handcrafted for special occasions, these pieces turn serving into a truly memorable experience.

**Abbeyhorn gift box available** 📺



**Polished Horn Handle Carving Knife**

Length = 320mm  
Product Code: **SCKP**



**Polished Horn Handle Carver Fork**

Length = 260mm  
Product Code: **SCFP**



**Stag Antler Handle Carver Fork**

Length = 250mm  
Product Code: **SCF**



**Stag Antler Handle Carving Knife**

Length = 320mm  
Product Code: **SCK**



**Stag Antler Handle Carver Steel**

Length = 295mm  
Product Code: **CSS**



**Polished Horn Handle Bread Knife**

Length = 310mm  
Product Code: **BREP**



**Stag Antler Handle Bread Knife**

Length = 330mm  
Product Code: **BRES**



**Polished Horn Handle Carver Steel**

Length = 290mm  
Product Code: **CSSP**

## Barware

Elevate enjoying your favourite tipple or bring the rustic charm of a country inn with products from our barware range – always using our signature blend of style and function. **Abbeyhorn gift box available** 📺



**Cork Screw - Horn - Thistle End**

Size = 95mm x 100mm  
Product Code: **T28T**



**Cork Screw - Horn**

Size = 95mm x 100mm  
Product Code: **T28P**



**Cork Screw - Stag Antler**


Size = 95mm x 100mm  
Product Code: **T28S**

# Barware




 **Bottle Stopper - Stag Antler - Crown**  
Size = 130mm x 40mm  
Product Code: **BSC**




 **Bottle Stopper - Roe Deer**  
Size = 230mm x 50mm  
Product Code: **BSR**




 **Bottle Stopper - Horn - Thistle End**  
Size = 110mm x 25mm  
Product Code: **BST**



 **Bottle Stopper - Stag Antler - Y Shape**  
Size = 190mm x 100mm  
Product Code: **BSY**



 **Bottle Opener - Stag Antler**  
Size = 25mm x 150mm  
Product Code: **T29S**




 **Bottle Opener - Horn**  
Size = 35mm x 140mm  
Product Code: **T29P**



 **Bar Knife - Stag Antler**  
Length = 222mm  
Product Code: **T25S**



 **Bar Knife - Horn**  
Length = 215mm  
Product Code: **T25P**



 **Bar Set - Stag Antler - Two Piece**  
Product Code: **M76**



 **Bar Set - Horn - Two Piece**  
Product Code: **M76P**



 **Bar Set - Stag Antler - Three Piece**  
Product Code: **M77**



 **Bar Set - Horn - Three Piece**  
Product Code: **M77P**



# Spoons

Each of our hand-crafted horn spoons have been developed for a specific purpose, including pointed spoons to get into the very bottom corners of the chutney jar, dainty salt spoons to deliver the perfect amount of seasoning, and hearty porridge spoons best for fuelling yourself at the start of the day! Leave the metallic tang of normal spoons behind and find the pleasure of horn spoons.

Abbeyhorn gift box available 📦



**Salt Spoon**  
Length = 73mm  
Product Code: **SS**



**Salt Spoon - Bone**  
Length = 70mm  
Product Code: **BSS**



**Salt Spoon & Dish Set**  
A useful and beautiful addition to any table.  
Product Code: **NBSS**



**Salt Spoon - Square End**  
Length = 74mm  
Product Code: **T10P**



**Mustard Spoon - Bone**  
Length = 105mm  
Product Code: **BMS**



**Caviar Spoon - Round Bowl**  
Length = 112mm  
Product Code: **CVRY**



**Caviar Spoon - Square Bowl**  
Length = 122mm  
Product Code: **CVE**



**Caviar Spoon - Straight Handle**  
Length = 111mm  
Product Code: **CVRR**



**Caviar Serving Spoon - Square Bowl**  
Length = 173mm  
Product Code: **CAVS**



**French Mustard Spoon - Square End**  
Length = 189mm  
Product Code: **T12P**



**Mustard Spoon**  
Length = 187mm  
Product Code: **FMS**

# Spoons



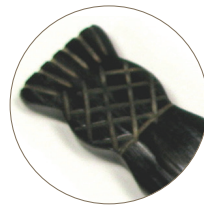
**Chutney Spoon**  
Length = 187mm  
Product Code: **CHS**



**Chutney Spoon - Square End**  
Length = 188mm  
Product Code: **T8P**



**Chutney Spoon - Thistle End**  
Length = 190mm  
Product Code: **T8T**



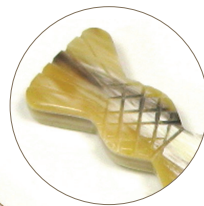
**Chutney Spoon - Bone**  
Length = 185mm  
Product Code: **BCHS**



**Egg Spoon**  
Length = 115mm  
Product Code: **ES**



**Egg Spoon - Thistle End**  
Length = 125mm  
Product Code: **T1T**



**Egg Spoon - Square End**  
Length = 124mm  
Product Code: **T1P**



**Egg Spoon - Bone**  
Length = 123mm  
Product Code: **BE**



**Porridge Spoon - Rough**  
Length = 148mm  
Product Code: **RCS**



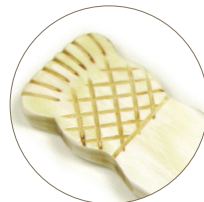
**Porridge Spoon**  
Length = 185mm  
Product Code: **PS**



**Porridge Spoon - Square End**  
Length = 185mm  
Product Code: **T5P**



**Porridge Spoon - Thistle End**  
Length = 190mm  
Product Code: **T5T**





# Spoons



## Tea Caddy Spoon

Size = 40mm x 85mm  
Product Code: **TCS**



## Tea Caddy Spoon - Thistle End

Size = 36mm x 105mm  
Product Code: **T4T**



## Tea Caddy Spoon - Square End

Size = 36mm x 104mm  
Product Code: **T4P**



## Yoghurt Spoon

Length = 111mm  
Product Code: **YSRR**



## Jam Spoon

Length = 145mm  
Product Code: **PJS**



## Jam Spoon - Thistle End

Length = 142mm  
Product Code: **PJST**



## Child's Spoon

Length = 150mm  
Product Code: **CS**



## Child's Spoon - Square End

Length = 137mm  
Product Code: **T6P**



## Child's Spoon - Thistle End

Length = 136mm  
Product Code: **T6T**



## Child's Whistling Spoon

Length = 185mm  
Product Code: **T7P**

*A centuries-old Scottish design with a little whistle built into the handle, used for eating and then recalling mother from the byre! Original examples can be seen in Fife Folk Museum & York Museum*



## Fruit Spoon

Length = 122mm  
Product Code: **FS**

# Boxed Spoon Sets

Several of our spoon designs can come in handy boxed gift sets – perfect for retail displays or as thoughtful presents.



**Egg Spoons - Set of 4**  
Product Code: 4ESB



**Egg Spoons - Square End - Set of 4**  
Product Code: T2PB



**Egg Spoons - Thistle End - Set of 4**  
Product Code: T2TB



**Egg Spoons - Set of 6**  
Product Code: 6ESB



**Egg Spoons - Square End - Set of 6**  
Product Code: T3PB



**Egg Spoons - Thistle End - Set of 6**  
Product Code: T3TB



**Egg Spoons - Bone - Set of 4**  
Product Code: 4BESB

**Egg Spoons - Bone - Set of 6**  
Product Code: 6BESB



**Porridge Spoons - Set of 4**  
Product Code: 4PSB



## Salad Servers

Some of our most eye-catching products, always guaranteed to turn heads at the dinner table. Expertly crafted from a single, continuous piece of horn, each pair features a sublime blend of colours. **Abbeyhorn gift box available** 📺



📺  
**Horn Salad Servers**  
**Medium Bowl - Long Round Handles**  
Size = 295mm x 60mm  
Product Code: **LSS**



📺  
**Horn Salad Servers**  
**Small Bowl - Round Handles**  
Size = 185mm x 35mm  
Product Code: **PSSH**



📺  
**Horn Salad Servers**  
Size = 235mm x 60mm  
Product Code: **LSSS**



📺  
**Horn Salad Servers Large Bowl - Wide Handles**  
Size = 295mm x 95mm  
Product Code: **RS26**

## Soap Dishes

Designed for the sink or countertop, a horn soap dish does more than just corral slippery soap – each one brings its own striking colouration and handmade charm. **Abbeyhorn gift box available** 📺



📺  
**Oval Soap Dish**  
Size = 100mm x 145mm  
Product Code: **OSH**



📺  
**Oval Soap Dish With Holes**  
Size = 125mm x 85mm  
Product Code: **RM39**



📺  
**Soap Dish - Triangle With Holes**  
Size = 100 x 125mm  
Product Code: **TSH**

# Horn Bowls & Trays

From serving olives to organising jewellery, our horn bowls and trays blend rustic charm with practical elegance – each one as functional as it is unique. **Abbeyhorn gift box available** 📺



**Tiny Polished Horn Bowl**  
**65mm Round**  
Diameter = 65mm  
Product Code: **RB52**



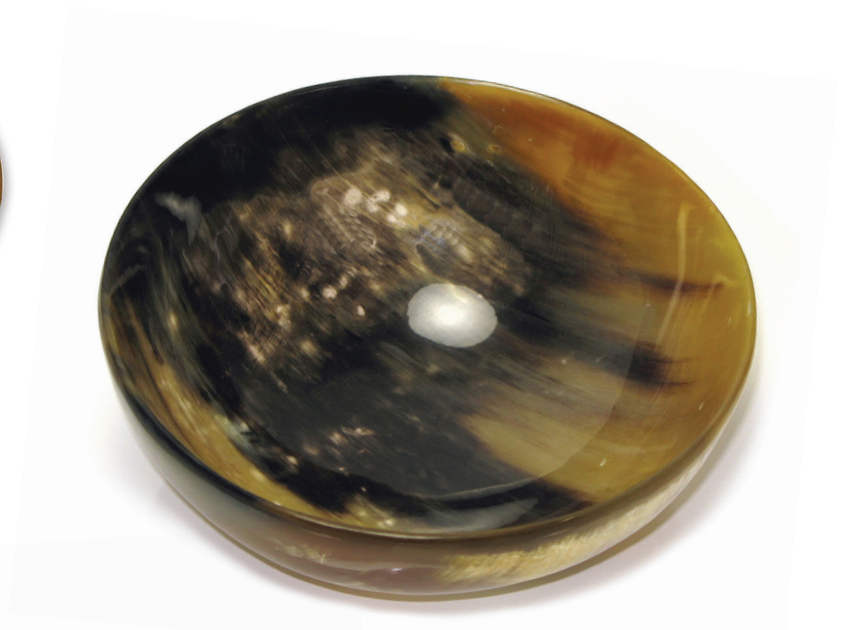
📺  
**Small Polished Horn Bowl**  
**80mm Round**  
Diameter = 80mm  
Product Code: **RB8**



📺  
**Small Polished Horn Bowl**  
**100mm Round**  
Diameter = 100mm  
Product Code: **RB9**



📺  
**Polished Horn Bowl**  
**125mm Round**  
Diameter = 125mm  
Product Code: **RB5**



**Polished Horn Bowl**  
**160mm Round**  
Diameter = 160mm  
Product Code: **RB3**



**Polished Rectangular Tray**  
Size = 160mm x 90mm  
Product Code: **RM15**



**Salt/Spice Bowl**  
Diameter = 60mm  
Product Code: **NB**



# Horn Kitchen Utensils

Products that many won't even consider until they see them, we shape horn to create items that fulfil a plethora of roles in the kitchen... from peeling oranges to spreading pâté. **Abbeyhorn gift box available** 📦



**Honey Dipper**  
Length = 167mm  
Product Code: **RHS**



**Mustard Dab - Small**  
Length = 70mm  
Product Code: **MD**



**Mustard Dab - Large**  
Length = 104mm  
Product Code: **T11P**



**Pate Spreader**  
Length = 150mm  
Product Code: **PBS**



**Caviar Spreader**  
Length = 148mm  
Product Code: **CVS**



**Orange Peeler - Bone**  
Length = 118mm  
Product Code: **BOP**



**Orange Peeler**  
Length = 110mm  
Product Code: **OP**



**Beechwood & Horn Mushroom Brush**  
Clean your mushrooms without making them wet, slimy and slippery.  
Size = 45mm x 55mm  
Product Code: **MRB**



**Pickle Fork**  
Length = 178mm  
Product Code: **PF**



**Spurtle**  
Avoid lumps with this Scottish stirrer for porridge, stews and broths.  
Length = 278mm  
Product Code: **SPR**

# House & Home





# House & Home

Our House & Home collection celebrates the remarkable versatility of horn, antler, and bone. From purely functional pieces to decorative treasures – and everything in between – here is something for everyone.

## Crafting

Using handmade tools for needlework and small crafts honours the deep tradition behind these art forms – where heritage and craftsmanship intertwine. **Abbeyhorn gift box available** 📦



### Sewing Needle - Bone

Size = 5mm x 62mm  
Product Code: **BSN**



### Lace Bobbin Blank - Bone 1½"

Size = 6mm x 114mm  
Product Code: **BHAT**



### Thimble - Horn

Size = 22mm x 30mm  
Product Code: **HTH**



### Lace Bobbin Blank - Bone 1¼"

Size = 6mm x 108mm  
Product Code: **BSPR**



### Pointed Folder - Bone 4½"

Size = 19mm x 110mm  
Product Code: **NBS**



### Pointed Folder - Bone 6"

Size = 20mm x 153mm  
Product Code: **BF6**



### Pointed Folder - Bone 7"

Size = 21mm by 176mm  
Product Code: **BF7**



### Rounded Folder - Bone 7"

Size = 21mm by 178mm  
Product Code: **BFR7**

# Home Office

From sleek letter openers to pen cups, our Home Office collection is made with the desk in mind. Each piece transforms everyday tasks into moments of quiet appreciation for traditional craftsmanship. **Abbeyhorn gift box available** 📁



**Solid Horn Letter Opener**

Length = 185mm  
Product Code: **PKH**



**Letter Opener - Horn Handle**

Length = 215mm  
Product Code: **T20P**



**Letter Opener - Roe Deer Antler Handle**

Length = 320mm  
Product Code: **T20R**



**Letter Opener - Stag Antler Handle**

Length = 212mm  
Product Code: **T20S**



**Letter Opener - Horn Handle Thistle End**

Length = 210mm  
Product Code: **T20T**



**Polished Horn Storage Pot**

Size = 80mm x 120mm  
Product Code: **OSP**



**Tall Polished Horn Storage Pot**

Size = 90mm x 130mm  
Product Code: **OSPPT**



**Horn Pen Cup**

Height = 160mm  
Product Code: **PEN**



**Rough Horn Storage Pot**

Size = 80mm x 125mm  
Product Code: **OSP**



**Tall Rough Horn Storage Pot**

Size = 90mm x 130mm  
Product Code: **OSPPT**



**USB Flash Drive 8GB**

Size = 25mm x 60mm  
Product Code: **USB**



# Decorations

For centuries, horns and antlers have graced interiors from grand estates to humble homes – their natural elegance transcending eras. Our Decorations collection honours this legacy with weighted horn ornaments of understated charm and uniquely memorable whole antler candle holders.



**Polished Horn Ornament**

Height = Approx. 530mm  
Product Code: **PHO**



**Tealight Candle Holder**

Size = 80mm x 60mm  
Product Code: **HVB**



**Polished Horn Ornament with Wooden Base**

Height = Approx. 530mm  
Product Code: **PHOW**



**Cow Horns on Skull - Rough**

Size = 900mm x 1200mm  
Product Code: **200BS**



**Rams Horns on Skull**

Size = Approx. 800mm x 300mm  
Product Code: **200RS**



**Cow Horns on Skull - Polished**

Size = 900mm x 1200mm  
Product Code: **200BSP**



**Stag Antlers on Skull**

Size = 740mm x 830mm  
Product Code: **1AS**



**Buffalo Horns on Skull**

Size = 870mm x 670mm  
Product Code: **BUFS**



**Stag Antler on Skull - Mounted**

Size = 550mm x 500mm  
Product Code: **1ASM**



**Stag Antler Candle Holder**

Product Code: **1RAC**

# Furniture

Unique and handmade to order, our pieces of furniture are the ultimate Abbeyhorn statement piece – striking whole horns and sturdy frames made by our local blacksmith join to create functional homeware that transform spaces with their bold natural presence.



**Cow Horn Chair**  
Size = 730mm x 1020mm  
Product Code: **CHC**



**Cow Horn Table**  
Size = 600mm x 605mm  
Product Code: **CHT**

## Walking & Wading Sticks

Stickmaking is an artform in itself that blends generations of tradition and skill handed down over centuries. We create our range with heads made from iconically curly rams' horns – heating, shaping, sanding and polishing them to achieve our three styles with a superbly glossy finish.

Y-shaped forks of stag antler are also used to top our 'Thumb' sticks – named due to how the hand naturally rests on the stick head – and these are even available with a whistling-end. Finally, our antler also caps our weighted wading sticks for those venturing into water or marshy land.

Available on two types of wood - Blackthorn or Hazel, in two lengths - 36" or 54" (915mm or 1372mm).



**Blackthorn**



**Hazel**



**Wading Stick Base**



# Walking & Wading Sticks



## Curly Ramshorn Walking Stick

Handle Size = 120mm x 120mm

36" Blackthorn	Product Code: <b>CRSB36</b>
54" Blackthorn	Product Code: <b>CRSB54</b>
36" Hazel	Product Code: <b>CRSH36</b>
54" Hazel	Product Code: <b>CRSH54</b>



## Rounded Crook Ramshorn Walking Stick

Handle Size = 125mm x 115mm

36" Blackthorn	Product Code: <b>RRCB36</b>
54" Blackthorn	Product Code: <b>RRCB54</b>
36" Hazel	Product Code: <b>RRCH36</b>
54" Hazel	Product Code: <b>RRCH54</b>



## Traditional Crook Ramshorn Walking Stick

Handle Size = 120mm x 110mm

36" Blackthorn	Product Code: <b>SRSB36</b>
54" Blackthorn	Product Code: <b>SRSB54</b>
36" Hazel	Product Code: <b>SRSH36</b>
54" Hazel	Product Code: <b>SRSH54</b>



## Y Shaped Thumb Stag Antler Walking Stick

Handle Size = 140mm x 150mm

36" Blackthorn	Product Code: <b>TB36</b>
54" Blackthorn	Product Code: <b>TB54</b>
36" Hazel	Product Code: <b>TH36</b>
54" Hazel	Product Code: <b>TH54</b>

## Y Shaped Thumb Stag Antler Walking Stick with Whistle

36" Blackthorn	Product Code: <b>TWB36</b>
54" Blackthorn	Product Code: <b>TWB54</b>
36" Hazel	Product Code: <b>TWH36</b>
54" Hazel	Product Code: <b>TWH54</b>

## Y-Shaped Thumb Stag Antler Wading Stick with Weighted Base

54" Blackthorn	Product Code: <b>WSB54</b>
54" Hazel	Product Code: <b>WSH54</b>

All of our Ramshorn Walking Sticks receive a subtle maker's initial. As well as this, each one of our Curly Ramshorn Sticks is individually numbered and logged by us.



# Accessories





# Accessories

A wide range of smaller horn goods are available in our accessories category – spanning jewellery, formalwear and sporting pieces. Each item in this collection celebrates the versatility of our natural materials, transforming everyday essentials into distinctive statements of craftsmanship.

## Horn Jewellery

Rings and bangles, old fashioned and newfangled. Horn has always made stunning jewellery, the unique vibrancy of its colour putting items into a true class of their own. We craft jewellery products for many purposes – bangles and rings to adorn wrists and hands; brooches and scarf pins to proudly display on one's chest; earrings, hair pins and slides to elegantly assist with hair styling.

**Abbeyhorn gift box available** 📦



### Horn Bangle - Narrow

Width = 7mm

Small	Ø 63-67mm	Product Code: <b>NCB-S</b>
Medium	Ø 68-72mm	Product Code: <b>NCB-M</b>
Large	Ø 73-75mm	Product Code: <b>NCB-L</b>



### Horn Bangle - 1" wide

Width = 23mm

Small	Ø 63-67mm	Product Code: <b>1CB-S</b>
Medium	Ø 68-72mm	Product Code: <b>1CB-M</b>
Large	Ø 73-75mm	Product Code: <b>1CB-L</b>



### Horn Bangle - 2" wide

Width = 47mm

Small	Ø 63-67mm	Product Code: <b>2CB-S</b>
Medium	Ø 68-72mm	Product Code: <b>2CB-M</b>
Large	Ø 73-75mm	Product Code: <b>2CB-L</b>



### Rectangle Hair Slide - Small

Size = 15mm x 65mm

Product Code: **HS7**



### Rectangle Hair Slide

Size = 30mm x 90mm

Product Code: **HS8**



### Oval Hair Slide

Size = 85mm x 47mm

Product Code: **HS2**



### Horn Ring

Product Code: **HR**



### Horn Bangle Stand

Size = 150mm x 450mm

Product Code: **OBS**

# Horn Jewellery



**Scottie Dog Brooch**

Size = 35mm x 25mm

Product Code: **AAB-DOG**



**Wren Brooch**

Size = 40mm x 40mm

Product Code: **AAB-WREN**



**Umbrella Brooch**

Size = 12mm x 50mm

Product Code: **UMB**



**Isometric Drop Horn Earrings**

Size = 19mm x 40mm

Product Code: **ER9**



**Short Drop Horn Earrings**

Length = 56mm

Product Code: **ER25**



**Round Horn Earrings**

Size = 28mm x 28mm

Product Code: **ER1**



**Scarf Pin**

Size = 50mm x 125mm

Product Code: **SC**



**Horn Hair Pin**

Length = 200mm

Product Code: **HPS**



**Horn Jewellery Stand**

Size = 120mm x 440mm

Product Code: **OJS**



# Buttons & Toggles

Traditional haberdashery has been made from horn and antler for many centuries – we still handmade these time-honoured items in very much the same way as our forefathers. Perfect for bringing a rustic, country look to garments and accessories.



**Toggle - Stag Antler**

Size = 15mm x 40mm  
Product Code: **ST**



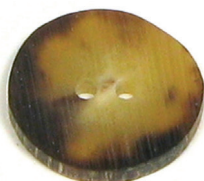
**Toggle - Horn**

Size = 20mm x 50mm  
Product Code: **OT**



**Zip Pull - Stag Antler**

Size = 10mm x 35mm  
Product Code: **SZP**



**Oxhorn Buttons**

Small Ø 20mm Product Code: **SHB**  
Large Ø 27mm Product Code: **LHB**



**Stag Antler Buttons**

Ø 14mm Product Code: **S14**  
Ø 16mm Product Code: **S16**  
Ø 19mm Product Code: **S19**



Ø 23mm Product Code: **S23**  
Ø 25mm Product Code: **S25**  
Ø 29mm Product Code: **S29**

## Button Hooks

Use a button hook to easily fasten buttons on shirts or boots by deftly pulling and twisting them through their holes.

**Abbeyhorn gift box available** 📦



**Button Hook - Stag Antler**

Size = 165mm x 15mm  
Product Code: **BHS**



**Button Hook - Horn**

Size = 155mm x 20mm  
Product Code: **BHP**

# Collar Stays

Collar stays, also called stiffeners, are a highly subtle accessory that sit inside the collar points of a fine shirt to maintain its rigidity and professional straightness. We offer stays made from ivory-esque cow bone or hand selected cuts of stunningly coloured cow horn, both can be personalised with a brand logo or initials to complete a sublime tailoring product.



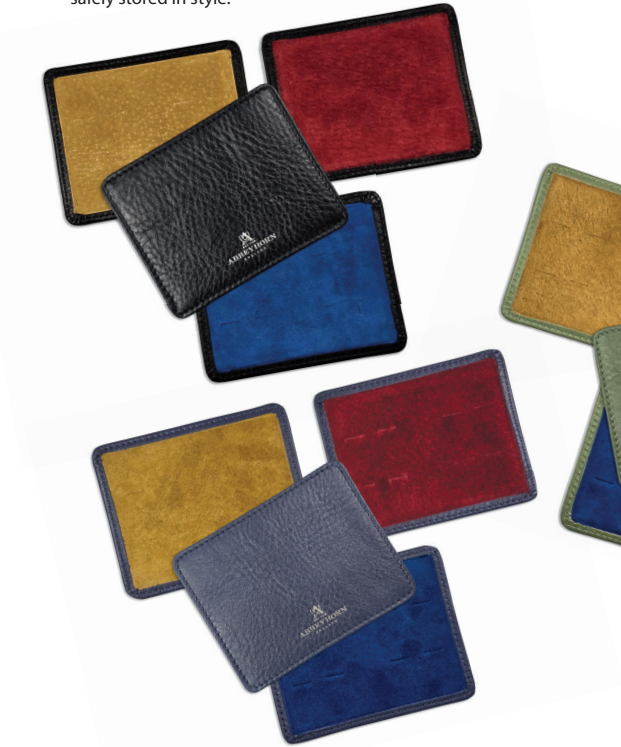
**Collar Stiffeners - Bone**  
 Small: 56mm x 8mm      Product Code: **BCS**  
 Large: 65mm by 8mm    Product Code: **BCL**



**Collar Stiffeners - Horn**  
 Small: 56mm x 8mm      Product Code: **HCS**  
 Large: 65mm by 8mm    Product Code: **HCL**

## Collar Stiffener Pouch

Made from genuine Italian leather and coloured wild boar suede by skilled Florentine craftsmen, our pouches are the perfect way to keep collar stays together. In a jacket pocket, in a holdall bag or just on the shelf – keep them safely stored in style.



We offer a choice of three different leather colours, each with the option of three coloured suedes. The pouches will hold two pairs of collar stays, or they can be ordered as sets that include the pouch along with a large and small pair of stays.

- |                            |                             |
|----------------------------|-----------------------------|
| Black Pouch - Blue Suede   | Product Code: <b>LCS-BB</b> |
| Black Pouch - Red Suede    | Product Code: <b>LCS-BR</b> |
| Black Pouch - Yellow Suede | Product Code: <b>LCS-BY</b> |
| Green Pouch - Blue Suede   | Product Code: <b>LCS-GB</b> |
| Green Pouch - Red Suede    | Product Code: <b>LCS-GR</b> |
| Green Pouch - Yellow Suede | Product Code: <b>LCS-GY</b> |
| Navy Pouch - Blue Suede    | Product Code: <b>LCS-NB</b> |
| Navy Pouch - Red Suede     | Product Code: <b>LCS-NR</b> |
| Navy Pouch - Yellow Suede  | Product Code: <b>LCS-NY</b> |



## Bone Collar Stays

### Two Pair Set With Leather Pouch - Small & Large

- |                            |                            |
|----------------------------|----------------------------|
| Black Pouch - Blue Suede   | Product Code: <b>BC-BB</b> |
| Black Pouch - Red Suede    | Product Code: <b>BC-BR</b> |
| Black Pouch - Yellow Suede | Product Code: <b>BC-BY</b> |
| Green Pouch - Blue Suede   | Product Code: <b>BC-GB</b> |
| Green Pouch - Red Suede    | Product Code: <b>BC-GR</b> |
| Green Pouch - Yellow Suede | Product Code: <b>BC-GY</b> |
| Navy Pouch - Blue Suede    | Product Code: <b>BC-NB</b> |
| Navy Pouch - Red Suede     | Product Code: <b>BC-NR</b> |
| Navy Pouch - Yellow Suede  | Product Code: <b>BC-NY</b> |

## Horn Collar Stays

### Two Pair Set With Leather Pouch - Small & Large

- |                            |                            |
|----------------------------|----------------------------|
| Black Pouch - Blue Suede   | Product Code: <b>HC-BB</b> |
| Black Pouch - Red Suede    | Product Code: <b>HC-BR</b> |
| Black Pouch - Yellow Suede | Product Code: <b>HC-BY</b> |
| Green Pouch - Blue Suede   | Product Code: <b>HC-GB</b> |
| Green Pouch - Red Suede    | Product Code: <b>HC-GR</b> |
| Green Pouch - Yellow Suede | Product Code: <b>HC-GY</b> |
| Navy Pouch - Blue Suede    | Product Code: <b>HC-NB</b> |
| Navy Pouch - Red Suede     | Product Code: <b>HC-NR</b> |
| Navy Pouch - Yellow Suede  | Product Code: <b>HC-NY</b> |



# Cufflinks

A classic accessory for formalwear, cufflinks allow the wearer to subtly show their own personality and flair. Our own styles, made using both horn and antler, showcase a love of tradition and natural beauty. **Abbeyhorn gift box available** 📦



📦  
**Cufflinks - Square - Horn**  
Size = 17mm x 17mm  
Product Code: **CL1**



📦  
**Cufflinks - Marquis - Horn**  
Size = 23mm x 10mm  
Product Code: **CL8**



📦  
**Cufflinks - Square - Stag Antler**  
Size = 17mm x 17mm  
Product Code: **CL15**



📦  
**Cufflinks - Round - Stag Antler**  
Size = 20mm x 20mm  
Product Code: **CL45**



📦  
**Cufflinks - Rectangle - Horn**  
Size = 15mm x 20mm  
Product Code: **CL2**



📦  
**Cufflinks - Oval - Horn**  
Size = 17mm x 20mm  
Product Code: **CL3**



📦  
**Cufflinks - Round - Horn**  
Size = 20mm x 20mm  
Product Code: **CL4**



📦  
**Cufflinks - Narrow Rectangle - Horn**  
Size = 20mm x 10mm  
Product Code: **CL5**



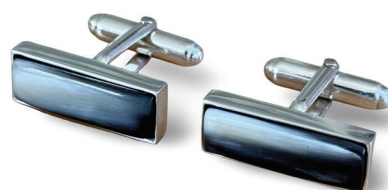
Abbeyhorn logo etched on standard cufflinks

## Sterling Silver Cufflinks

Timeless and enduring, sterling silver is prized in jewellery for its perfect balance of beauty and strength. Each piece is elevated with hand-selected horn cabochons – chosen for their superior colour and lustre, then expertly polished to create some of our most luxurious designs.



**Silver Cufflinks - Square**  
Product Code: **CL15L**



**Silver Cufflinks - Rectangle**  
Product Code: **CL25L**



**Silver Cufflinks - Round**  
Product Code: **CL45L**



# Gifts





# Gifts

Our vast range of products includes many items which provide an opportunity for discerning gift giving. This category collates many items designed with that purpose in mind, each one a unique celebration of nature's artistry and timeless craftsmanship. Whether marking a special occasion or simply conveying appreciation, an Abbeyhorn gift carries the weight of tradition and the warmth of personal connection.

## Keyrings

Available in a range of shapes with many different engraved design options, our handmade keyrings make fantastic additions to gift shops and websites, offering tempting small presents and effortless upselling opportunities.

Abbeyhorn gift box available 🎁



**Keyring - Oxhorn - 5cm**  
Length = 50mm  
Product Code: **KR**



**Keyring - Stag Antler**  
Size = 15mm x 25mm  
Product Code: **SKR**



**Keyring - Oxhorn - 10cm**  
Size = 40mm x 100mm  
Product Code: **KRM**



**Keyring - Oxhorn - Fish**  
Size = 37mm x 85mm  
Product Code: **KRF**



**Keyring - Stag Antler Crown**  
Size = 30mm x 40mm  
Product Code: **KR1CR**



**Keyring - Oxhorn - Small Fish**  
Size = 25mm x 50mm  
Product Code: **KRFS**



**Keyring - Oxhorn - 3" Shoehorn**  
Length = 76mm  
Product Code: **KR9**



**Keyring - Oxhorn - Salmon**  
Length = 45mm  
Product Code: **KRS**



**Keyring - Oxhorn - Bottle Opener**  
Length = 89mm  
Product Code: **T29PK**

# Keyrings



**Keyring - Oxhorn - Highland Cow**  
Length = 50mm  
Product Code: **KR1HC**



**Keyring - Oxhorn - Puffin**  
Length = 50mm  
Product Code: **KR1PU**



**Keyring - Oxhorn - Highland Cow Head**  
Length = 50mm  
Product Code: **KR8HH**



**Keyring - Oxhorn - Beehive**  
Length = 50mm  
Product Code: **KR4**



**Keyring - Oxhorn - Fly Fisher**  
Length = 50mm  
Product Code: **KR1FF**



**Keyring - Oxhorn - Seal**  
Length = 50mm  
Product Code: **KR1SE**



**Keyring - Oxhorn - Shooting**  
Length = 50mm  
Product Code: **KR3**



**Keyring - Oxhorn - Fishing Boat**  
Length = 50mm  
Product Code: **KR8FB**



**Keyring - Oxhorn - Stag**  
Length = 50mm  
Product Code: **KR1ST**



# Magnets

A selection of our Keyring designs are available as Fridge Magnets – engraved on polished horn left with a natural shape, each has a strong neodymium magnet affixed to the rear to facilitate placement on suitable surfaces.



Fridge Magnets made from horn are guaranteed to be unique products that are a favourite of our gift-shop customers – these bold and solid items stand out from the crowd and also offer a unique opportunity to have individual designs or logos engraved on a very affordable gift that everybody wants to take home.



Choose from a selection of designs similar to our keyrings overleaf, take blank magnets and let horn's natural beauty do all of the work or contact us to discuss your own design...

**Blank**  
**Beehive**  
**Fly Fisher**  
**Highland Cow**  
**Shooting**  
**Puffin**

Product Code: **FM1**  
Product Code: **FM1BH**  
Product Code: **FM1FF**  
Product Code: **FM1HC**  
Product Code: **FM1HU**  
Product Code: **FM1PU**

**Seal**  
**Stag**  
**Fishing Boat**  
**Highland Cow Head**  
**Salmon**

Product Code: **FM1SE**  
Product Code: **FM1ST**  
Product Code: **FM1FB**  
Product Code: **FM1HH**  
Product Code: **FMS**

## Small Gifts

Small yet distinct, giftware made from colourful cow horn or timeless bone never fails to catch the eye whilst not compromising on functionality. **Abbeyhorn gift box available** 📦



**Pair of Dice - Bone**  
Size = 10mm x 10mm  
Product Code: **DI**



**Pair of Dice- Bone - Blank**  
Size = 10mm x 10mm  
Product Code: **DIB**



**Pair of Dice - Horn**  
Size = 15mm x 15mm  
Product Code: **DIH**



**Horn Money Clip**  
Size = 22mm x 63mm  
Product Code: **MC**



Dice sold separately

**Cow Horn Dice Shaker**  
Size = 53mm x 75mm  
Product Code: **BD**

# Sgian Dubhs

Pronounced 'ski-en doo', these traditional Scottish blades are worn tucked in to the top of the kilt hose as part of Highland dress. Each small knife is made here with a handle of either antler or horn, some even feature a blend of the two. All of our sgian dubhs are provided with a brown leather sheath. **Abbeyhorn gift box available** 📁



**Sgian Dubh - Stag Antler Handle - Deer Head**  
Size = 40mm x 175mm  
Product Code: **SDSD**



**Sgian Dubh - Stag Antler Handle - Steel Cap**  
Size = 30mm x 175mm  
Product Code: **SDCT**



**Sgian Dubh - Horn Handle**  
Size = 30mm x 175mm  
Product Code: **SDHH**



**Sgian Dubh - Stag Antler Handle - Celtic Cross**  
Size = 40mm x 175mm  
Product Code: **SDSCC**



**Sgian Dubh - Stag Antler Handle - Horn Cap**  
Size = 30mm x 175mm  
Product Code: **SDHT**



**Sgian Dubh - Stag Antler - Crown Handle**  
Size = 40mm x 43mm  
Product Code: **SDHTC**



**Sgian Dubh - Stag Antler Handle - Thistle**  
Size = 40mm x 175mm  
Product Code: **SDST**



**All come with a leather sheath**



## Quaichs

A quaich (pronounced 'quake', but ending in the same way as 'loch') is a traditional Scottish drinking cup used as a symbol of friendship and peace. The two-handed style incorporates trust, both on the part of the giver and receiver, and they are often used in wedding ceremonies. **Abbeyhorn gift box available** 📦



**Small Horn Quaich**

Size = 200mm x 50mm  
Product Code: **RB23**



**Large Horn Quaich**

Size = 235mm x 55mm  
Product Code: **RB24**



**Large Horn Quaich - Pewter Handles**

Size = 50mm x 185mm  
Product Code: **PMQ**



**Small Horn Quaich - Pewter Handles**

Size = 130mm x 30mm  
Product Code: **PMQS**

## Sporting Accessories

Antler – a timeless country material – is the ideal choice for our sporting accessories. Its solid, bony structure lends strength to fishing and game priests, while hollowed sections transform into crisp, reliable whistles for the field.



**Priest - Salmon - Stag Antler 9"**

Length = Approx. 230mm - 240mm  
Product Code: **SSP**



**Priest - Trout - Stag Antler 8"**

Length = Approx. 203mm - 216mm  
Product Code: **STP**



**Priest - Pocket - Stag Antler**

Length = Approx. 110mm - 140mm  
Product Code: **SPP**



**Keyring - Stag Antler - Whistle - 2 Tone**

Size = 16mm x 90mm  
Product Code: **STK**



**Keyring - Stag Antler - Whistle**

Size = 16mm x 90mm  
Product Code: **SWK**



# Viking





# Viking

Drinking vessels with undeniable presence – our mugs and horns have graced screens in global epics that include *Game of Thrones*, *Vikings*, and *The Last Kingdom*. Crafted with uncompromising expertise, each piece delivers quality without concession: no sharp mouthpieces, balanced stands, no thin horn that bends and breaks – this is tradition, reimagined for the modern hand, where heritage meets indomitable spirit.

## Drinking Horns

The ultimate vessel for a favourite drink! From rustic feasts to modern gatherings, our drinking horns and their stands are made from 100% cow horn that is cut to size then sanded and given either a rugged natural finish or a high-polish gleam. Each is available in multiple sizes to suit every thirst and occasion.

### Drinking Horn On Stand - Rough

7" Product Code: **DH5**  
9" Product Code: **DH8**  
12" Product Code: **DH**



### Drinking Horn On Stand - Polished

7" Product Code: **DHP5**  
9" Product Code: **DHP8**  
12" Product Code: **DHP**



### Drinking Horn On Stand Rough - 1 Pint

Size = 85mm x 360mm  
Product Code: **DH1P**



### Drinking Horn On Stand Polished - 1 Pint

Size = 85mm by 360mm  
Product Code: **DHPP**

### Pewter Mounted Viking Drinking Horn

Size = 95mm x 320mm  
Product Code: **ODH**



# Drinking Horns



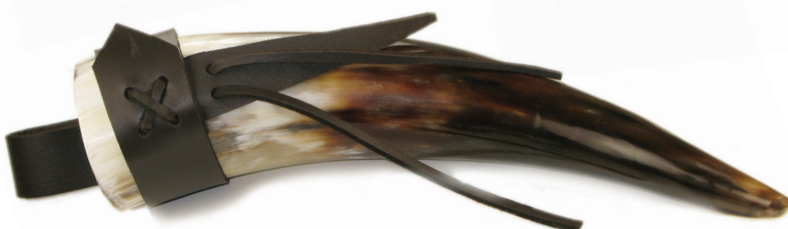
## Drinking Horns - Rough

4-5"	Product Code: <b>P5R</b>
7-8"	Product Code: <b>P8R</b>
9-10"	Product Code: <b>P10R</b>
14-15"	Product Code: <b>P15R</b>
19-20"	Product Code: <b>P20R</b>
24-25"	Product Code: <b>P25R</b>
30"	Product Code: <b>RXL</b>



## Drinking Horns - Polished

4-5"	Product Code: <b>P5</b>
7-8"	Product Code: <b>P8</b>
9-10"	Product Code: <b>P10</b>
14-15"	Product Code: <b>P15</b>
19-20"	Product Code: <b>P20</b>
24-25"	Product Code: <b>P25</b>
30"	Product Code: <b>PXL</b>



We offer leather holsters with a belt loop as an optional extra for our drinking horns - please contact us for further details.



# Horn Mugs

Crafted from a single cut of cow horn, our horn mugs have two different styles of handle: the sturdy straight-edged handle of the Soldiers Mug or the sleek curved handle of the Viking Mug designed to easily slip on to a belt. Each piece features a securely fitted tulipwood base, sealed with food-safe resin for complete watertightness – we also offer optional pyrographic branding of the Abbeyhorn logo on to the wooden base. **Abbeyhorn gift box available** 📺



📺  
**Horn Viking Mug - Rough - 1 Pint**  
Size = 110mm x 190mm  
Product Code: **MCM1PT**



📺  
**Horn Viking Mug - Rough - 1/2 Pint**  
Size = 110mm x 160mm  
Product Code: **MCMT**



📺  
**Horn Viking Mug - Polished - 1 Pint**  
Size = 110mm x 190mm  
Product Code: **MCMDFT**



📺  
**Horn Viking Mug - Polished - 1/2 Pint**  
Size = 110mm x 190mm  
Product Code: **MCMP**



📺  
**Horn Soldiers Mug - Rough - Small**  
Size = 80mm x 161mm  
Product Code: **MCMSR**



📺  
**Horn Soldiers Mug - Rough - 1/2 Pint**  
Size = 110mm x 160mm  
Product Code: **MCM**



📺  
**Soldiers Mead Cup - Rough - 1 Pint**  
Size = 110mm x 190mm  
Product Code: **MCM1P**



📺  
**Soldiers Mead Cup - Polished - Small**  
Size = 80mm x 161mm  
Product Code: **MCMS**



📺  
**Soldiers Mead Cup - Polished - 1/2 Pint**  
Size = 110mm x 160mm  
Product Code: **MCMP**



📺  
**Soldiers Mead Cup - Polished - 1 Pint**  
Size = 110mm x 190mm  
Product Code: **MCMDP**

Abbeyhorn Brand  
on Wooden Base



# Tots & Cups

Ideal for shorter drinks, our range of cups and tots still feature the array of colours characteristic to horn. Unlike our mugs, they are made with a horn base before having the food-safe resin applied – this brings an extra surface of natural charm. For an elevated gift, choose between two sizes of highly-polished cups, each adorned with a hallmarked sterling silver rim – masterfully applied by us here in the workshop. **Abbeyhorn gift box available** 📦



📦  
**Polished Horn Beaker  
with Silver Band**  
Size = 80mm x 120mm  
Product Code: **SPC**



📦  
**Horn Beaker - Rough**  
Size = 80mm x 120mm  
Product Code: **PCB**



📦  
**Large Horn Beaker - Polished**  
Size = 90mm x 160mm  
Product Code: **UPC**



📦  
**Small Horn Beaker - Rough**  
Size = 72mm x 90mm  
Product Code: **PCBS**



📦  
**Horn Beaker - Polished**  
Size = 80mm x 120mm  
Product Code: **PC**



📦  
**Horn Whisky Tot - Rough**  
Size = 65mm x 70mm  
Product Code: **WHTR**



📦  
**Horn Whisky Tot - Polished**  
Size = 65mm x 70mm  
Product Code: **WHT**



📦  
**Small Horn Beaker - Polished**  
Size = 72mm x 90mm  
Product Code: **PCS**



📦  
**Tiny Horn Whisky Tot - Rough**  
Size = 40/45mm x 62mm  
Product Code: **WHTTR**



📦  
**Tiny Horn Whisky Tot - Polished**  
Size = 40/45mm x 62mm  
Product Code: **WHTT**



📦  
**Polished Horn Tot with Silver Band**  
Size = 65mm x 70mm  
Product Code: **WHTS**

**2 Horn Tots - Boxed**  
Size = 65mm x 70mm  
**Rough** Product Code: **WHTR2B**  
**Polished** Product Code: **WHT2B**



**2 Polished Horn Tots  
with Silver Band - Boxed**  
Size = 65mm x 70mm  
Product Code: **WHTS2B**





# Bugles

Ankole cattle horns – nature's original wind instrument – create rich, resonant bugles unmatched in tone, their sound reverberating with primal resonance. All of our bugles come with an attached leather strap.



**Horn Bugle - Rough - Baby**  
Length = 11-12" (280mm - 305mm)  
Product Code: **BB**



**Horn Bugle - Polished - Baby**  
Length = 11-12" (280mm - 305mm)  
Product Code: **BBP**



**Horn Bugle - Rough**  
Length = 14"-15" (356mm - 381mm)  
Product Code: **BUGS**



**Horn Bugle - Polished**  
Length = 14"-15" (356mm - 381mm)  
Product Code: **BUGSP**



**Horn Bugle - Rough - Large**  
Length = 20"-22" (508mm - 560mm)  
Product Code: **BUGSL**



**Horn Bugle - Polished - Large**  
Length = 20"-22" (508mm - 560mm)  
Product Code: **BUGSLP**

# Raw Materials

Many of our materials are available in raw or semi-worked states – perfect for custom projects. These items often come in their natural state, and will vary in size, shape and colour accordingly.



**Raw Horn - Small**  
Length = 203mm - 254mm  
Product Code: **2B8**



**Raw Horn - 15"**  
Length = 356mm - 381mm  
Product Code: **2B15**



**Raw Horn - 20"**  
Length = 482mm - 508mm  
Product Code: **2B20**



**Raw Horn - 25"**  
Length = 610mm - 635mm  
Product Code: **2B25**



**Raw Horn - Wide Mouthed**  
Length = 610mm - 635mm  
Product Code: **WMH**



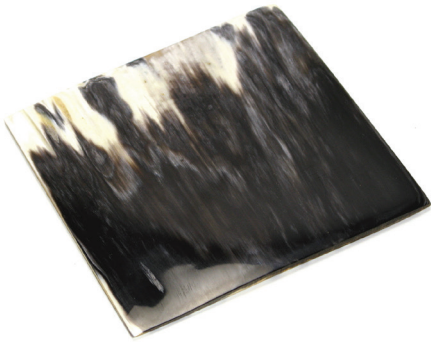
**Horn Tips – 2"-5" Dark**  
Sold by the kg  
Product Code: **2BBT**



**Horn Tips – 2"-5" Coloured**  
Sold by the kg  
Product Code: **2BCT**  
Coloured tips are much rarer and may not always be available



# Raw Materials



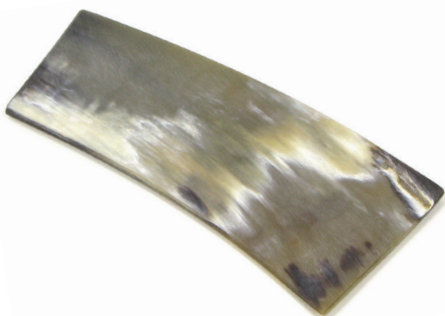
**Flat Horn Plate - Single Thickness  
Polished Both Sides**  
Size = 105mm x 205mm  
Product Code: **2BBP**



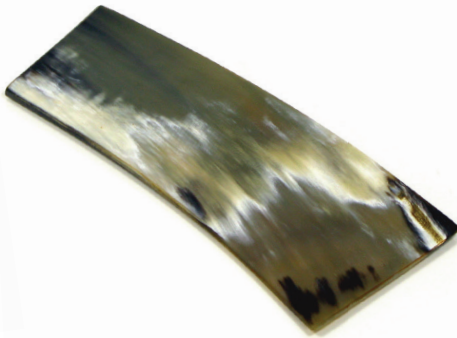
**Flat Horn Plate - Double Thickness  
- Raw**  
Size = 105mm x 205mm  
Product Code: **2BD**



**Flat Horn Plate - Single Thickness  
- Raw**  
Size = 105mm x 205mm  
Product Code: **2BS**



**Flat Horn Plate - Single Thickness  
- Sanded**  
Size = 105mm x 205mm  
Product Code: **2BSP**



**Flat Horn Plate - Single Thickness  
- Polished One Side**  
Size = 105mm x 205mm  
Product Code: **2BSS**



**Turned Oxhorn Roll - 3"**  
Diameter = 0.75" approx.  
Product Code: **3HR**

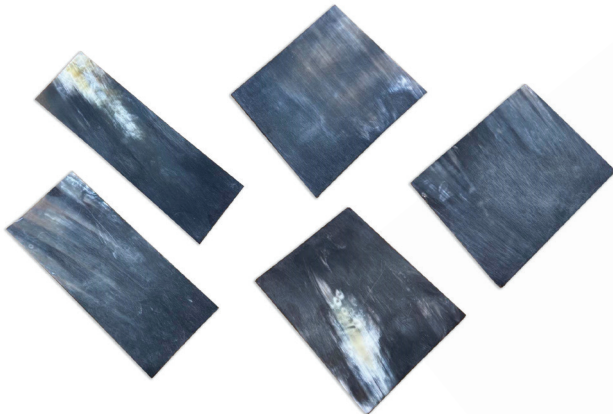


**Turned Oxhorn Roll - 2"**  
Diameter = 1.5" approx.  
Product Code: **2HR**



**Polished Horn Rod - 2"**  
Diameter = 0.5" approx.  
Product Code: **HH5C**

**Ramshorn - Whole**  
Product Code: **200R**



**Flat Horn Plates**  
60mm by 185mm x 4mm  
85mm by 185mm x 4mm  
100mm x 110mm x 4mm  
100mm x 130mm x 4mm  
100mm x 120mm x 4mm

Product Code: **AM1**  
Product Code: **AM2**  
Product Code: **AM3**  
Product Code: **AM4**  
Product Code: **AM5**

# Raw Materials



**Stag Crown Handle**  
Size: 4.75"  
Product Code: **1PKS**



**Stag Y Handle**  
Product Code: **201Y**



**Stag Crown Handle**  
Size: 3"  
Product Code: **2030**



**Stag Hook Handle**  
Size: 6"  
Product Code: **201H**



**Whole Roe Deer Antler**  
Product Code: **RDA**



**Whole Roe Deer Antler - Small**  
Product Code: **RDAS**



**Whole Stag Antler**  
Priced per kg  
Product Code: **1RA**



**Stag Antler Piece – Small – Single**  
Product Code: **STBS**



**Stag Antler Piece – Single**  
Product Code: **STB**



**Stag Tynes – Single**  
Size: 3"-4" Product Code: **1TY**  
Size: 4"-5" Product Code: **2TY**



**Stag Roll**  
Size: 3.5" Product Code: **13H**  
Size: 4" Product Code: **2014**  
Size: 6" Product Code: **2016**  
Size: 9" Product Code: **2019**



# Dog Chews

Our horn and antler chews help to keep pets as fit as a farm dog! These substantial pieces are cut from 100% natural cow horn or stag antler and offered in a range of sizes. All we do is remove any sharp edges and attach a length of natural rope to turn the chew into a toy as well.

## Cow Horn



**Dog Chew – Curved – Large**

Size: 7-8"

Product Code: **DCC**



**Dog Chew – Curved – Large**

Size: 5-6"

Product Code: **DCCS**



**Dog Chew – Thick**

Size: 5"

Product Code: **DCH**



**Dog Chew – Flat – Large**

Size: 7-8"

Product Code: **DCF**



**Dog Chew – Flat – Small**

Size: 5-6"

Product Code: **DCFS**



These chews will promote healthy teeth & gums – they are durable, have low odour and are hypoallergenic. We advise that animals are always supervised with these chews, and that fresh drinking water is provided. They should be discarded when worn to an unsuitable size.

## Stag Antler



**Dog Chew – Antler Piece**

Weight: 30-50g

Product Code: **DCAP**



**Dog Chew – Antler Tip**

Weight: 30-35g

Product Code: **DCAT**



**Small Animal Chews – Antler Piece**

Multiple pieces sold by weight

Product Code: **SAC**

# Terms & Conditions

Here is a summary of Abbeyhorn's Trading Terms & Conditions – for more specific and current information, please see the Trading Terms & Conditions section of our current price list.

## Boxed Products

A large selection of our products can be supplied in our Abbeyhorn-branded gift boxes (as detailed on Page 7). Please add a 'B' to the end of an applicable product's code when placing your order to have the item boxed.

## Carded Products

Some products can be supplied on hanging cards, e.g. combs and spoons, for ease of display – this option is free of charge. Please place a 'C' after the relevant product code.

## Shortages & Damages

If there are any issues with your order, such as shortages or damages, please notify us within 14 days of receipt of goods and we will endeavour to amend the situation.

## Carriage

Carriage will be charged on UK orders less than a net value which is specified in our Price List, subject to a minimum charge – orders above this amount will receive free carriage.

This excludes orders to the Scottish Highlands & Islands, the Republic of Ireland and Overseas.

The shipping costs for these orders are calculated based on the dimensions and weight once the order is packed.

## Minimum Orders

We do not have a Minimum Order Quantity. Instead, there is a minimum order value which is specified in our Price List. A fee will be added to orders under this amount.

## Colour Surcharge

If you require specific colour choices for products, we will add a surcharge on to those items, which is detailed in our Price List. However if you do not wish to pay the surcharge, we will send whichever colours are currently available. Please get in touch with us if you wish to discuss this further.

## Barcoding Fee

If you wish for your items to be custom-barcoded, there will be a surcharge added on top of your total order value, which is detailed in our Price List. Please contact us to further discuss any requirements you may have.

## Credit Accounts

We offer the option to open a Trade Customer Credit Account with us, which allows for payment to be made strictly 30 days net from date of invoice.

## Terms of Payment

Proforma invoices must be settled within 5 working days - otherwise the stock may be allocated to another customer. We reserve the right to charge interest on all overdue accounts – this is further detailed in our Price List.

**All goods remain the property of Abbeyhorn Ltd. until full payment has been made.**



# Contact Details

## Address:

Abbeyhorn Ltd.,  
Unit 6A-C Holme Mills,  
Holme, Carnforth,  
Lancashire,  
LA6 1RD

**PHONE:** +44 (0)1524 782 387

**E-MAIL:** [admin@abbeyhorn.co.uk](mailto:admin@abbeyhorn.co.uk)  
[info@abbeyhorn.co.uk](mailto:info@abbeyhorn.co.uk)

**VAT REGISTRATION NUMBER:** GB 533 5671 43

**EORI NUMBER:** GB 533 5671 43 000

## Opening Hours:

Our regular office hours are:  
9am - 4:30pm Monday – Thursday  
9am - 3:15pm Fridays

Excluding public holidays and over the Christmas period.

We also have a small factory shop that is open to visitors during office hours.

**COMPANY REGISTRATION NUMBER:** 3987514

## Where in the world is Abbeyhorn?

Abbeyhorn is located by the small Cumbrian village of Holme, located ten miles north of Lancaster. Easily accessible between junctions 35 and 36 of the M6 motorway, our Hornworks is situated on Holme Mills Industrial Estate.

The beautiful English Lake District is a stone's throw to the north away from Abbeyhorn; the ever rugged and beautiful Forest of Bowland to our south and the vast Morecambe Bay to our west. We handcraft our products in a truly lovely part of the world, and are constantly inspired by our surroundings to bring out the best of nature's beauty.



WHAT 3 WORDS:

luckier.  
regal.  
snake.











# ABBeyHORN

E N G L A N D

Abbeyhorn Ltd. Unit 6A-C Holme Mills,  
Holme, Carnforth, Lancashire, LA6 1RD  
United Kingdom  
+44 (0)1524 782 387  
[info@abbeyhorn.co.uk](mailto:info@abbeyhorn.co.uk)



[www.abbeyhorn.co.uk](http://www.abbeyhorn.co.uk)