

Ex de, Weatherproof



Features

- Zone 1, Zone 2 & non-Ex use.
- Ex de IIB + H₂ or IIC T4/T5/T6.
- ATEX certified, Ex II 2G.
- IECEx certified, Gb.
- Certified by BASEEFA.
- CUTR certified.*
- Chinese (CQST) certified.*
- Brazilian (Inmetro) certified.*
- IP66 and IP67.
- Certified temperature: -40°C to +65°C.**
- GRP corrosion-free flamepath.
- 115dB(A) at 15 Watts at 1 metre.
- 8 & 15 Watt versions.
- Power tappings via integral transformer.
- Ratcheted swivel mounting stirrup.
- Fitted with 316L stainless steel fixtures.
- Earth continuity available.
- Retained cover screws.
- Internal earth stud fitted as standard.

*Please contact MEDC Technical Sales.

** Model dependent, please contact MEDC Technical Sales for -50°C products.

Introduction

This range of loudspeakers, intended for use in potentially explosive gas atmospheres, has a power rating of up to 15 Watts and is suitable for use in gas groups IIB plus hydrogen and IIC.

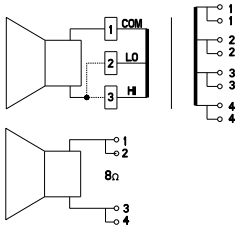
The flamepaths, flare and body, are manufactured from a UV stable glass reinforced polyester. Stainless steel screws and mounting stirrup are incorporated to ensure a corrosion-free product.



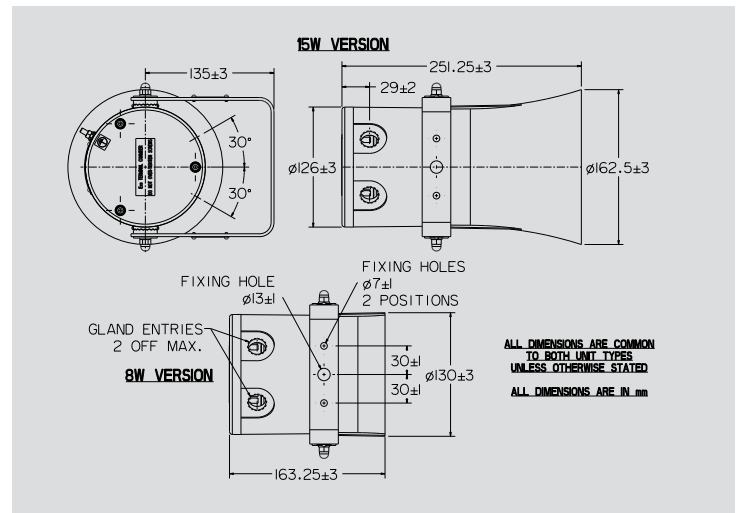
Certification and Specification

ATEX Ex de IIB + H₂:	Cert. no. Baseefa11ATEX0101X. Certified to: EN60079-0, EN60079-1, EN60079-7. Ex II 2G, Ex de IIB + H ₂ T4/T5/T6 Gb.
ATEX Ex de IIC:	Cert. no. Baseefa11ATEX0102X. Certified to: EN60079-0, EN60079-1, EN60079-7. Ex II 2G, Ex de IIC T4/T5/T6 Gb.
IECEX Ex de IIB + H₂:	Cert. no. IECEX BAS 11.0041X. Certified to: IEC60079-0, IEC60079-1, IEC60079-7. Ex de IIB + H ₂ T4/T5/T6 Gb.
IECEX Ex de IIC:	Cert. no. IECEX BAS 11.0042X. Certified to: IEC60079-0, IEC60079-1, IEC60079-7. Ex de IIC T4/T5/T6 Gb.
CUTR Ex de IIB + H₂:	1Ex de IIB + H ₂ T4/T5/T6 Gb.
CUTR Ex de IIC:*	1Ex de IIC T4/T5/T6 Gb.
Inmetro Ex de:	Ex de IIB + H ₂ T4/T5/T6 Gb.
CQST:	Ex de IIB + H ₂ T4/T5/T6 Gb.

Material:	Body & horn in anti-static, UV stable, glass reinforced polyester. Mounting stirrup and fixtures in 316L stainless steel.
Finish:	All natural or body and horn can be painted to customer specification.
Rated Power:	8 & 15 Watts RMS continuous (25°C).
Weight:	Long Flare (15W): 4.5kg Gross weight. 3.6kg Net weight. Short Flare (8W): 4kg Gross weight. 3.1kg Net weight.
Ingress Protection:	IP66 and IP67.
Entries:	Up to 2 x M20 ISO into Exe chamber.
Terminals:	8 x 4.0mm ² or 4 x 4.0mm ² .
Output:	Maximum output for IIB unit @ 1W/1M is 105dB(A). Maximum output for IIB unit @ 15W/1M is 115dB(A). Maximum output for IIC unit @ 1W/1M is 98dB(A). Maximum output for IIC unit @ 15W/1M is 107dB(A).
Frequency Range:	400Hz to 8kHz.
Certified Temp:	-40°C to + 40°C (T6)** -40°C to + 55°C (T5)** -40°C to + 65°C (T4)**
Voice Coil Impedance:	8 ohms.
Fire Retardancy:	GRP is fire retardant to ISO 1210.
Mounting:	Via stirrup with ratchet facility (supplied fitted).
Earth Continuity:	Internal/External earth stud linked to gland continuity.
Labels:	Optional stainless steel tag and duty labels.
Transformer:	100V line as standard. Use by combining the rated power tapings below.

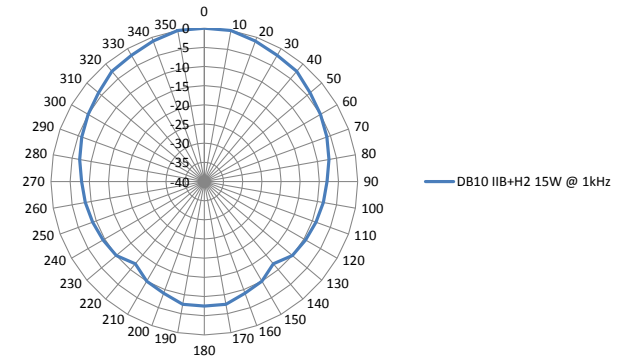
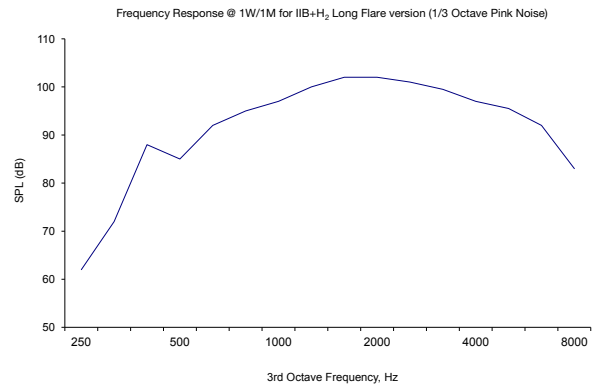


Terminals	Power	
	15W	8W
1:2 (HI)	15.0W	8.0W
1:3 (HI)	7.5W	4.0W
1:4 (HI)	3.75W	2.0W
1:2 (LO)	2.5W	1.0W
1:3 (LO)	1.25W	0.5W
1:4 (LO)	0.75W	0.25W



Transformer Tapping Options:

- Standard:** i) 8 terminals (4 x 2), loop in/loop out for 6 tapplings.
- Optional:** ii) 4 terminals (2 x 2), loop in/loop out, direct 8Ω connection to driver.



Ordering Requirements

The following code is designed to help in selection of the correct unit. Build up the reference number by inserting the code for each component into the appropriate box.

Model	Certification	Gas Group	Max Rated Power	Transformer	Options	Entries	Finish
DB10							
Certification Code	Group Code	Power Code	Transformer Code	Options Code	Entries Code	Finish Code	
ATEX B IECEX J CUTR G Chinese (CQST) Q* Inmetro EM*	IIB+H ₂ B IIC C†	8 Watt 8 15 Watt 15	Yes X* 8 ohm version N	Duty D* Tag T* Earth Continuity including stud ES Ext. Earth Stud (only) S None N	1 x M20 1B 2 x M20 2B 2 x M20 entries with one certified plug fitted 2BP	Natural Black N Red R Special S*	

* Please contact MEDC Technical Sales for availability.
** Model dependent, please contact MEDC Technical Sales for -50°C products.

† Not Inmetro or CQST certified
* Std 100V. Other values available, specify voltage.

* Please specify wording.

* Please specify.