



# Job Description / Person Specification

INSPECTOR			
<b>Department:</b>	Inspection	<b>Company:</b> AESSEAL plc	<b>Job Ref No:</b>
<b>Reporting to:</b>	SPD Branch Manager	<b>Location:</b>	Global Technology Centre, Mill Close, Bradmarsh Business Park, Rotherham
<b>Job Holder's Name:</b>		<b>Signed:</b>	<b>Date:</b>
<b>Manager's Name:</b>	Steve Williams	<b>Signed:</b>	<b>Date:</b>

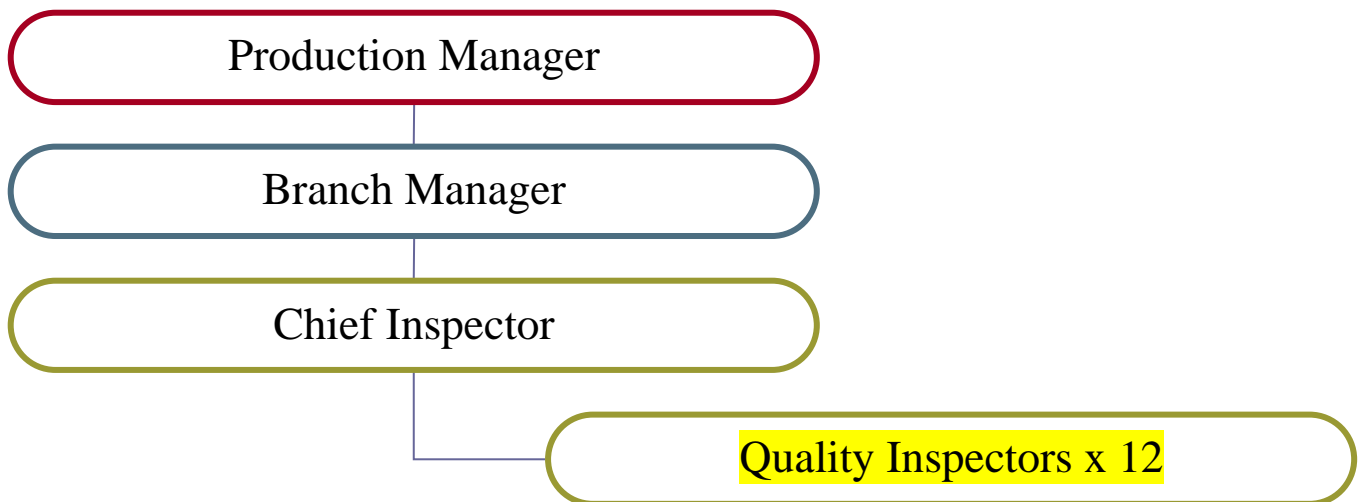
## 1. Job Purpose

Quality Control / Quality Engineering for all manufactured and bought in components

## 2. Job Dimensions

Responsible for maintaining the quality standards expected within the business.

## 3. Organisation Chart:



#### 4. Principal Accountabilities

- 4.1 You will be responsible for ensuring high product quality of precision manufactured components.
- 4.2 Duties will range from 3D off-line CMM programming, CNC, CMM operation and SPC analysis, as well as conventional measuring techniques
- 4.3 You will be quick to learn modern measuring techniques and have experience within a similar customer focused, engineering environment.

*N.B this list is not exhaustive, the job holder is required to carry out reasonable tasks within his/her level of skill and ability (as requested by senior management)*

#### 5. Skills, Knowledge and Experience

Criteria	Essential	Desirable
<b>Qualifications</b>		<ul style="list-style-type: none"> <li>• Ideally educated to HNC/HND or equivalent you will be an experienced inspector/quality engineer and highly computer literate.</li> </ul>
<b>Skills &amp; Knowledge</b>	<ul style="list-style-type: none"> <li>• Ability to work on your own initiative and to tight deadlines</li> <li>• You must be self-motivated and enthusiastic and be able to demonstrate your ability to investigate and solve problems as they arise.</li> </ul>	<ul style="list-style-type: none"> <li>• Knowledge of MCOSMOS CMM software.</li> <li>• Knowledge of CMM programming techniques</li> <li>• Knowledge of AESSEAL product range.</li> </ul>
<b>Experience</b>	<ul style="list-style-type: none"> <li>• Knowledge of measuring equipment and techniques</li> </ul>	<ul style="list-style-type: none"> <li>• Experience of Quality Improvement Techniques is desirable</li> </ul>
<b>Character</b>	<ul style="list-style-type: none"> <li>• Desire to provide exceptional customer service</li> <li>• Eager to assist in the continuous improvement of the organisation</li> <li>• Ability to promote, embrace and manage change</li> <li>• Contribute to a happy working environment</li> <li>• Effective communicator</li> </ul>	