

**Facilities**  
**Hampshire**  
**September 2018**





**Robert Chambers**

**ECB Regional Clubs & Facilities Manager (South Central)**

**Sussex**

**Hampshire**

**Isle of Wight**

**Berkshire**

**Buckinghamshire**

**Oxfordshire**

**Robert Chambers**

**ECB Regional Clubs & Facilities Manager (South Central)**

**Project guidance**

- **Successful project**
- **Managing expectations on what is achievable**
- **Assistance and advice**
- **Deliver the project that you want**

## **Robert Chambers**

### **ECB Regional Clubs & Facilities Manager (South Central)**

- **League cricket**
- **Player representative on league committee**
- **Club committee member**
- **Club Chairman for 9 years**

**Understand club position and amount of time and effort involved in projects**

## Successful Projects

- **Have a project team**
  - Shared responsibility, improved efficiency through delegation
- **Have good communication between all parties**
- **Are realistic**
  - Difficult decisions
  - Achievable
  - Timeframe
  - Affordable
  - Compromises

## Types of project

- **New pavilion**
- **Pavilion refurbishment**
- **Nets**
- **Protective netting (ball strike)**
- **New grounds**
- **Extending size of square**
- **Re-orientation**
- **Installing drainage**
- **Indoor centres**

- **ECB website**

[www.ecb.co.uk/be-involved/club-support/club-facility-management](http://www.ecb.co.uk/be-involved/club-support/club-facility-management)

## **New Pavilion & Refurbishment**

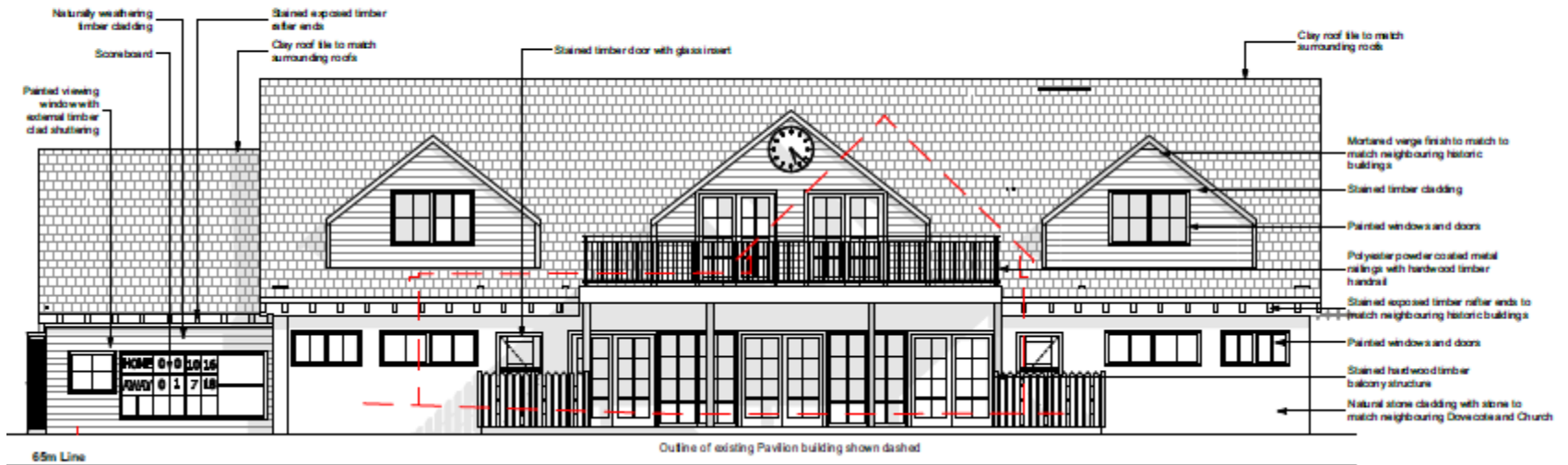
- **Understand what is realistically needed**
  - **Use architect with experience of sports buildings**
  - **Compliance with technical specifications**
  - **Establish costs (build and running costs – are they sustainable)**
  - **How much can you afford**
  - **Understand timescales (funding, planning)**
  - **Regular communication**
  - **Single storey (reduces costs and requirements)**
- 
- **ECB website**  
[www.ecb.co.uk/be-involved/club-support/club-facility-management](http://www.ecb.co.uk/be-involved/club-support/club-facility-management)

**You will not replace this**





# With this



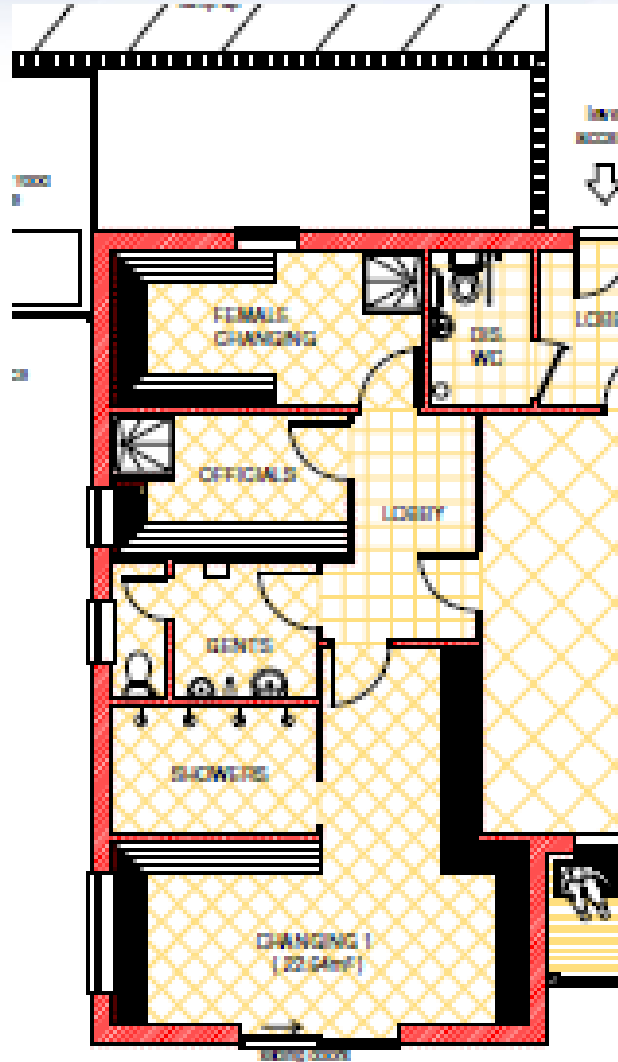
Or this



## **Pavilions – key points**

- **Line of sight to the square**
- **Changing Rooms**
  - **to have 20sqm of usable changing space**
    - Exclude screening, WC and showers from calculation
  - **Should have a WC and basin**
  - **Independent external access**
  - **Low level windows (supplement with blinds or smart glass for privacy)**
- **Shower areas**
  - **Partition (not communal showers)**
  - **Cubicles for women and girls (and grooming area)**
- **Officials changing**
  - **To have WC, basin and shower**
- **Must be accessible and have disabled access**

# Pavilions - Issues



## **Nets (new or replacement)**

- **Technical specification**
  - **Approved systems**
  - **North / South orientation**
  - **Planning permission**
  - **Maintenance**
  - **Sinking fund provision**
- 
- **ECB website**  
[www.ecb.co.uk/be-involved/club-support/club-facility-management](http://www.ecb.co.uk/be-involved/club-support/club-facility-management)

## Types of project

- *New pavilion*
- *Pavilion refurbishment*
- *Nets*
- **Protective netting (following a risk assessment)**
- *New grounds (fine turf consultant)*
- *Extending size of square (fine turf consultant)*
- *Re-orientation (fine turf consultant)*
- *Installing drainage (fine turf consultant)*
- *Indoor centres*

- **ECB website**

[www.ecb.co.uk/be-involved/club-support/club-facility-management](http://www.ecb.co.uk/be-involved/club-support/club-facility-management)

## Protective netting

- Current process
- Previously
  
- Risk assessment [www.labosport.com](http://www.labosport.com)
- Recommendation
- Tendering – establish costs
- Planning permission
  
- Where there is a foreseeable event for damage or injury a club are liable
- Legal precedents (Miller v Jackson)
  
- *Netting is expensive – but can you afford to ignore the risk*

## Types of project

- *New pavilion*
  - *Pavilion refurbishment*
  - *Nets*
  - **Protective netting (following a risk assessment)**
  - **New grounds (fine turf consultant)**
  - **Extending size of square (fine turf consultant)**
  - **Re-orientation (fine turf consultant)**
  - **Installing drainage (fine turf consultant)**
  - **Indoor centres**
- 
- **ECB website**  
[www.ecb.co.uk/be-involved/club-support/club-facility-management](http://www.ecb.co.uk/be-involved/club-support/club-facility-management)



## **ECB Funding Process**

- **ECB is a 'top up' funder not a primary funder**
- **Always over subscribed relative to budget**
- **Need to make right decisions and meaningful investment**
- **County board input**
  
- **Clubs need to consider**
  - **Amount of club funding**
  - **External funding**

## ECB Funding - Timeline

- **July – Dec notification of possible projects (clubs or county board)**
  - Gather information(visits and speak to clubs)
  - Review plans
- **Dec – Feb establish portfolio for funding year**
  - Annual budget announced in Dec/Jan
  - More information
  - Amended plans
  - Funding position
- **March – ECB review**
  - Reduce number of projects
- **April – May – Finalise details on projects for potential investment and decisions made on where and how much**
- **Sept – Nov – Investment made**

## **ECB Interest Free Loans**

- **Up to £50,000**
- **Repayable over 5 years**
- **Quarterly repayments**
- **Club/committee decision – are they right for you?**
  - **Ability to meet repayments**
  - **Guarantors or legal charge**

## ECB Funding Documentation

- **Plans**
- **3 years of accounts**
- **Bank statements**
- **Bank reconciliation**
- **Security of tenure**
- **Constitution**
- **Insurance policies**
- **Quote analysis**
- **Financial forecast**
- **Business plan**
- ***Planning permission***

## **Please remember to address**

- **Planning permission**
- **Security of tenure**
- **Funding – Sport England Community Asset Fund**
- **Seek independent specialist advice**
  - **VAT**
  - **Legal**

## Summary

- **ECB**
  - can provide help and guidance
  - need to be contacted at an early stage
  - will need compliant projects
  - will be oversubscribed so some projects will be discounted for investment
  - will need regular contact and updates on progress
- **Successful projects for ECB investment will have a service level agreement**
- **Loans are available – *but must be the right decision for the club***
- [robert.chambers@ecb.co.uk](mailto:robert.chambers@ecb.co.uk)

## Technical specification documents

- [www.ecb.co.uk/be-involved/club-support/club-facility-management](http://www.ecb.co.uk/be-involved/club-support/club-facility-management)