



## Suffolk House

George Street, Croydon, CR0 1AY

### Cost-effective office suites

**800 to 5,281 sq ft**  
(74.32 to 490.62 sq m)

# Suffolk House, George Street, Croydon, CR0 1AY

## Summary

Available Size	800 to 5,281 sq ft
Business Rates	Upon Enquiry
EPC Rating	C

## Description

Suffolk House is a low rise building on ground and three upper floors offering vast floor plates and airy light office space. There are two main entrances into the building this offering complete flexibility and the ground floor areas are mainly retail including a Sainsbury's store. The building offers a range of offices with floors of 25,000 sq ft arranged around a central light well as well as smaller suites. The offices are manned by security and competitively priced.

## Location

Suffolk House is located in a prominent position on the corner of George Street with Park Lane within the centre of Croydon and the prime office area of East Croydon. The mainline rail station at East Croydon is two minutes' walk and George Street is one of the main tram routes in the town. The two key shopping malls Centrale and Whitgift Centre are within five minutes' walk, as is the main shopping zone in-between the two retail centres. The two shopping centres will be redeveloped by Westfield and Hammerson to provide a new retail heart to the town.

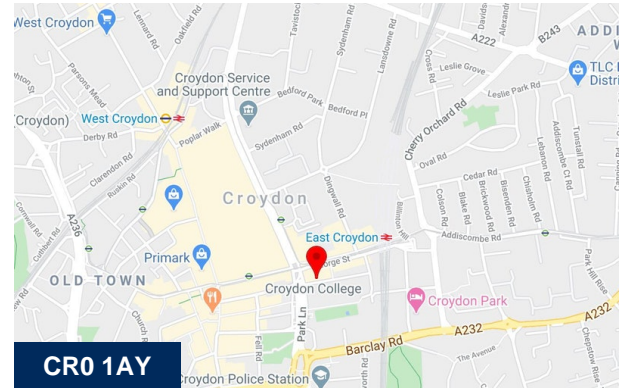
## Accommodation

The accommodation comprises of the following

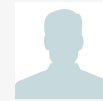
Name	Sq ft	Sq m	Availability
3rd - Suite 8	800	74.32	Available
2nd - Suite 4	1,500	139.35	Available
2nd - Suite 10	2,981	276.94	Available
<b>Total</b>	<b>5,281</b>	<b>490.62</b>	

## Specification

- Cost effective accommodation
- Security / Commissionaire
- CCTV and access control
- Lifts
- Central heating
- Suspended ceilings
- Fluorescent lighting
- Carpeted
- Newly refurbished toilets



## Viewing & Further Information



**Vanessa Clark**

01234567890 | 07777777777

darryl+2568-Vanessa-Clark@tlgd.co.uk