



Evergreen Studios

Little Green, Richmond Upon Thames, TW9 1QS

Outstanding Grade A office building in prestigious Richmond Green location. Launch day - Tuesday 20th April, 8am-12pm.

3,363 to 14,029 sq ft
(312.43 to 1,303.34 sq m)

- Semi-exposed services
- LED suspended lighting
- External courtyard and roof terraces
- Parking spaces
- Lift access
- Secure bike storage
- Excellent natural light
- WC plus shower facilities

Summary

Available Size	3,363 to 14,029 sq ft
Rent	Rent on Application
Business Rates	N/A
Service Charge	N/A
Car Parking	N/A
Estate Charge	N/A
EPC Rating	Upon Enquiry

Description

This prominent office building comprising five floors of Grade A accommodation has undergone extensive refurbishment, complete with semi-exposed services, oak wood effect flooring, LED suspended lighting, perimeter trunking and air-conditioning. The entrance has been re-configured to form an impressive reception area and each level boasts lift access and excellent internal layout, equipped with fitted kitchens and WC/shower facilities. Other amenities include outside space, parking and secure bike storage.

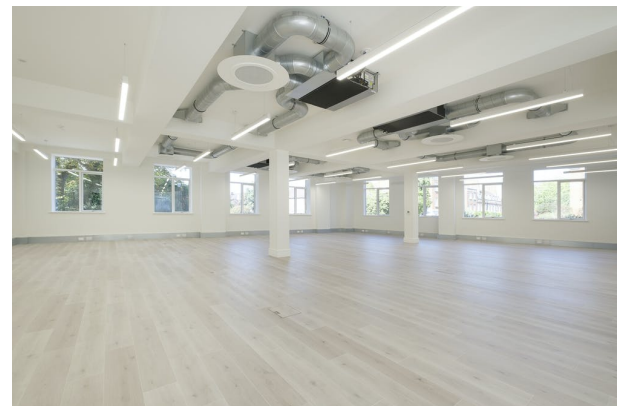
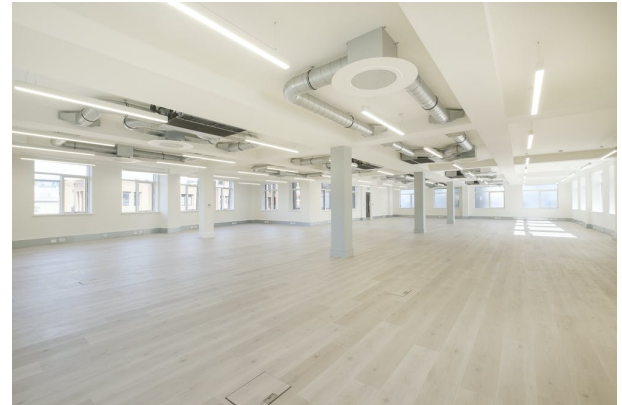
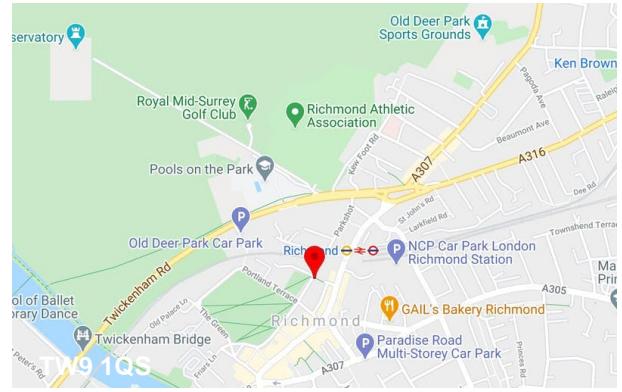
Location

Richmond is a highly affluent town located some 9 miles from Central London and has excellent road and rail links to both London and Heathrow Airport via the M3 and M4 highways. The property is ideally situated a short walk from Richmond Station and is moments from Richmond Green and George Street. Local amenities include Whole Foods, Paul, Waitrose, Joe and the Juice and Leon.

Accommodation

The accommodation comprises of the following

Name	Sq ft	Sq m	Availability
Lower Ground	3,398	315.68	Available
Ground	3,363	312.43	Available
1st	3,634	337.61	Available
2nd	3,634	337.61	Available
Total	14,029	1,303.33	



Viewing & Further Information



Julius de Mattos

01234567890 | 07777777777

testing+3070-Julius-de_Mattos@tlgd.co.uk



Andy Shaw

01234567890 | 07777777777

testing+3072-Andy-Shaw@tlgd.co.uk