



Portland House 4 Albion Street

Cheltenham, GL52 2LG

Period Office To Let in the centre of Cheltenham

1,062 to 7,695 sq ft
(98.66 to 714.89 sq m)

- Retained period features
- private car park providing 12 allocated spaces.
- Perimeter Trunking
- Gas central heating

Portland House 4 Albion Street, Cheltenham, GL52 2LG

Summary

Available Size	1,062 to 7,695 sq ft
Business Rates	N/A
Service Charge	N/A
EPC Rating	Upon Enquiry

Description

Portland House provides an attractive period building at the front with accommodation over four floors, with a modern and open plan rear section. The rear extension provides contemporary space on two levels with the ground floor being a double height into the eaves.

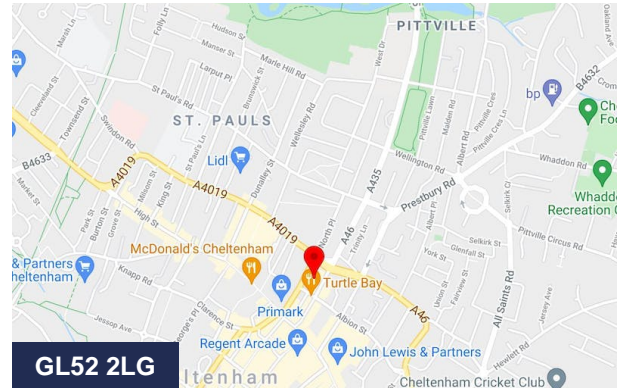
The owners are undergoing a comprehensive programme of works to modernise and upgrade the building. Full specifications are available on request, and parties are able to input on ff&E as well as decorative finishes, at this stage.

The accommodation benefits from gas central heating, retained period features, perimeter trunking and a private car park providing 12 allocated spaces.

Location

Portland House is located in the attractive Spa town of Cheltenham, the gateway to the Cotswolds.

Cheltenham is conveniently located within easy reach of Bristol and Birmingham. Home to a number of major companies, Cheltenham is a regional centre renowned for good communications, varied shopping and leisure facilities. Portland House is situated in a highly visible position on Albion Street in Cheltenham Town Centre.



Viewing & Further Information



Andrew Heath

01234567890 | 07777777777

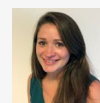
testing+4812-Andrew-Heath@tlgd.co.uk



Allan Lloyd

01234567890 | 07777777777

testing+4872-Allan-Lloyd@tlgd.co.uk



Seonaid Butler

01234567890 | 07777777777

testing+4811-Seonaid-Butler@tlgd.co.uk