



Regus - Lakeside

Building 1000, Lakeside North Harbour, Portsmouth, PO6 3EZ

Fully-serviced private office spaces and dedicated desks set in landmark business location, Lakeside 1000.

25 to 20,000 sq ft
(2.32 to 1,858.06 sq m)

- 3 meeting rooms
- 73 private offices
- 13 coworking desks
- Business lounge & breakout areas
- On-site coffee bar & lunch restaurant
- 24hr access
- Day Care

Regus - Lakeside, Building 1000, Lakeside North Harbour, Portsmouth, PO6 3EZ

Description

1000 Lakeside Building is the south coast's leading office campus and a landmark business destination. designed to a high specification with a glass atrium centrepiece.

Location

The building is conveniently located within premium business facilities and amenities including a café, supermarket, hairdresser and nursery.

Ideally located for the M27 corridor, there's even a free shuttle to bus and train stations and Portsmouth's city centre.

Winterhill Road Train Station - 1.2 km

Accommodation

The accommodation comprises of the following

Name	sq ft	sq m	Availability
Building - 73 Private Offices	-	-	Available
Building - 13 Coworking Desks	-	-	Available

Viewings

Viewings by appointment only.

Terms

Office space - available from £190pp/per month

Coworking desk - available from £178pp/per month

Meeting rooms - available from £16 per hour

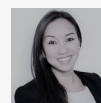
Prices shown are based on 24 month contracts.



Summary

Available Size	25 to 20,000 sq ft
Business Rates	N/A
Service Charge	N/A
Estate Charge	N/A
EPC Rating	EPC exempt - Serviced Office – subject to legal review

Viewing & Further Information



Nella Pang

01234567890 | 07777777777

testing+4263@kato.app



Jonathan Trice

01234567890 | 07777777777

testing+6416@kato.app



Ed Roberts

01234567890 | 07777777777