



PDF-The Gherkin

30 St. Mary Axe, London, EC3A 8BF

The Gherkin's unmistakable silhouette holds an undeniable presence on the London skyline. As the instantly recognisable symbol of the City.

200,000 sq ft (18,580.61 sq m)

- Space delivered fully fitted and tailored to your needs
- Floor to ceiling height 2.75m
- Top floor restaurant and bar
- From 12,226 to 204,114 sq ft of flexible floor space available
- 24/7 management and security
- Event space and private dining rooms for hire

Lease Assignment / For Sale

Summary

Available Size	750 sq ft
Premium	£10,000
Business Rates	N/A
Service Charge	£5 per sq ft
EPC Rating	Upon enquiry

Description

The Gherkin's unmistakable silhouette holds an undeniable presence on the London skyline. As the instantly recognisable symbol of the City, this is the place where you define who you are.

204,000 sq ft of fully fitted Cat A+ workspace, sky-high restaurant and bar, and an iconic address recognised across the globe. Perfectly positioned right where world-leading blue chip companies call home.

Location

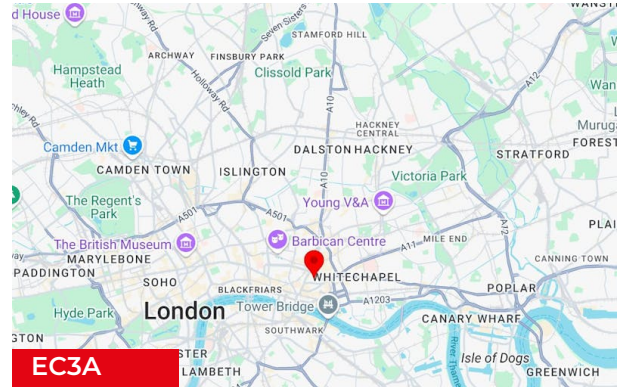
This is where the world's biggest players converge. Share your neighbourhood with like-minded high-performers, in a place hyper-connected to the rest of the capital and beyond.

Liverpool Street is one of four key stations only a short walk away. Catch the new Elizabeth Line there, along with all the vital tube and rail connections fanning out from the City. It's direct to Heathrow and London Stansted airports too.

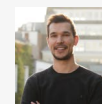
Accommodation

The accommodation comprises the following areas:

Name	sq ft	sq m	Availability
10th	750	69.68	Available
Total	750	69.68	



Viewing & Further Information



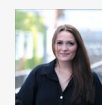
Chris Hill

01234567890 | 07777777777
chris.h+user@kato.app



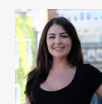
Michael Avery

01234567890 | 07777777777
michael+user@tlgd.co.uk



Katie Searle

01234567890 | 07777777777
katie+user@kato.app



Jane Osborne

01234567890 | 07777777777
jane+user@kato.app