

6 CHESTERFIELD GARDENS, MAYFAIR, W1J

Office To Let - 1,770 sq. ft.
Fully fitted and furnished.




LOCATION

The property is situated in the prime location of southern Mayfair, with Green Park Station only a 6 minute walk away. 6 Chesterfield Gardens sits just off Curzon Street and benefits from being a short walk to both Shepherd's Market and Hyde Park, highlighting the exclusivity of its location.

DESCRIPTION

The Ground floor accommodation comprises 1,770 sq. ft. of high quality fitted office space, with great levels of natural light. The building comprises 8 floors (Basement to 6th) and includes occupiers such as Tilney, Cantor Fitzgerald and I Squared Capital. The space currently comprises one self-contained board room and 2 open plan fitted offices.

TRANSPORT LINKS

| | |
|------------------|--|
| Green Park |  6 minutes |
| Hyde Park Corner |  9 minutes |
| Bond Street |  14 minutes |

AMENITIES

The accommodation benefits from the following amenities:

- Fully fitted and furnished
- Fibre internet with 100 mbps speed
- 24 Hour Access
- Air Conditioning
- High Quality Fitted Kitchen
- Raised Floor
- Reception/concierge
- Accent Lighting
- Self-contained entry/exit available

AVAILABILITY

Ground floor – 1,770 sq. ft.

Option 1 – Part ground floor (whole demise)
1,350 sq. ft.

Option 2 – Boardroom 420 sq. ft.

Option 3 – Combined 1,770 sq. ft.

TERMS

Available by way of assignment or sublease directly from the current tenant until March 2023.

Guiding: £69.50 per sq. ft.

Rates: £35.50 per sq. ft.

Service charge: £17.97 per sq. ft.

CONTACT

For further information or to arrange a viewing please contact:

Angus Marlow-Thomas: 020 7866 8612

angus.marlow-thomas@montagu-evans.co.uk

evans.co.uk

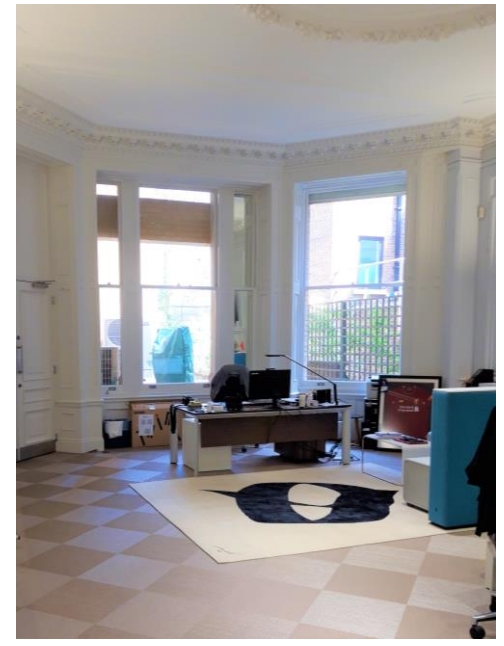
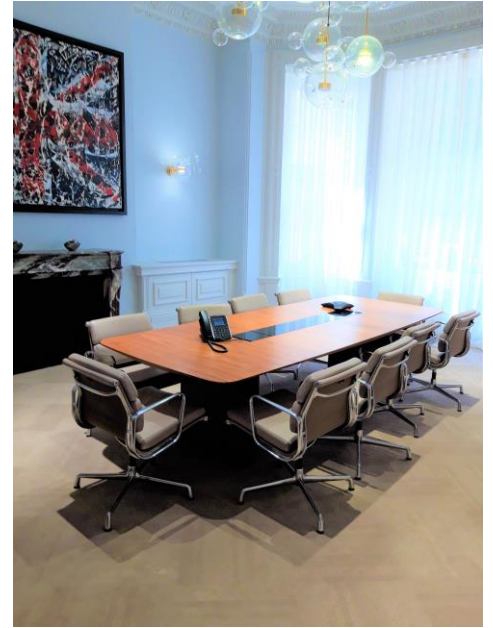
Katie Stewart: 020 7866 8692

katie.stewart@montagu-evans.co.uk

Matthew King: 07776 587 767

matthew.king@montagu-evans.co.uk

PHOTOGRAPHS



FITTED SPACE PLANS

