

NOTES:

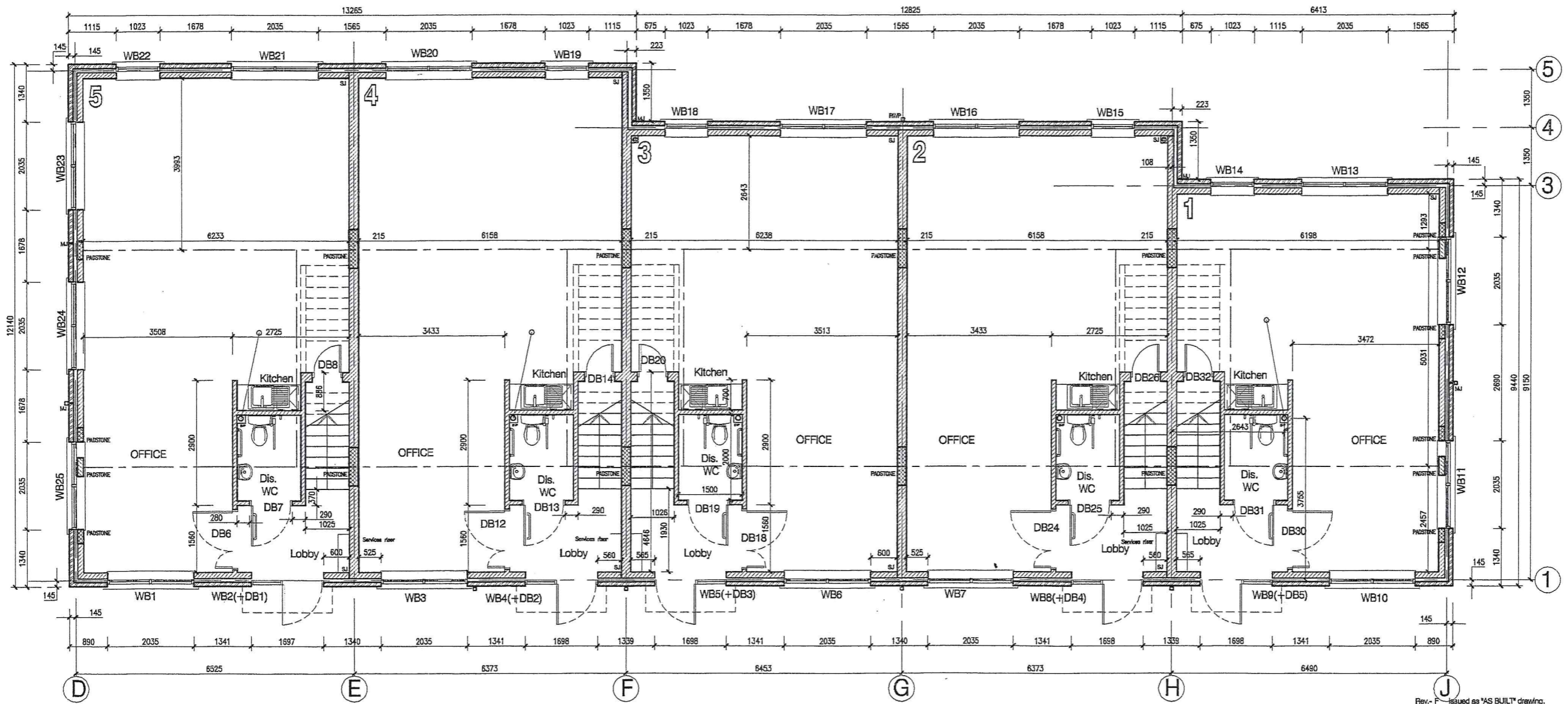
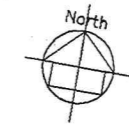
This drawing is copyright. It is sent to you in confidence and must not be reproduced or disclosed to third parties without our prior permission.

This drawing is to be read in conjunction with all relevant consultants, specialist manufacturers drawings and specifications.

Any discrepancies in dimensions or details on or between these drawings should be drawn to our attention.

All dimensions are in millimetres unless noted otherwise.

Any surveyed information incorporated within this drawing cannot be guaranteed as accurate unless confirmed by fixed dimension.



02.02 F

Ground Floor Plan

Rev - F	Issued as "AS BUILT" drawing.	SF	15/02/01
Rev - E	ISSUED FOR CONSTRUCTION.	SF	22-06-00
	S.I, I.M.I & paststone positions added.		
	Dis. Wc's layouts handed. Dims added.		
Rev - C	Under stair support wall moved.	SF	06-06-00
Rev - B	Under stair support wall revised to 215 thk	SF	25-04-00
Rev - A	Staircase width reduced by 75mm	SF	05-04-00
Revisors		By /Checked /Date	

AS BUILT



B³	CLIENT	WILDBROOK PROPERTIES LTD
	PROJECT	Proposed Office Development Mary Road Guildford Surrey
TITLE	Ground Floor Plan Units 1-5	
DATE	28.02.00	PROJECT NO. 60592
SCALE	1:50	
02.02 F		