

MENIER

BANKSIDE

51-53 Southwark St.

BUILDING

BELONG

PLANS

LIFESTYLE

TRANSPORT

CONTACT

A SWEET STORY

Once a chocolate factory, The Menier Building now offers inspiring office space for companies seeking a unique and individual environment.

An elegant brick and stone-dressed façade opens to reveal a soft centre.

Light-filled offices encourage informal gatherings, exchange of ideas, social cohesion and a vibrant creative atmosphere.

An outside terrace provides perfect space for meetings, sunshine lunches, or taking in a local coffee and a tasty pastry.

Chocolate is not compulsory.





THE BUILDING

HISTORY

HERITAGE

This five-story factory and warehouse was built in the late 1860s by the French Menier Chocolate Company, who were innovators in pioneering the conching process that enabled the mass production of premium chocolate.

This success, along with being the first company to introduce wrapped blocks of chocolate to the market, encouraged Menier to expand overseas and set up a new state of the art factory in Southwark.

Since 2004 a part of this historic building has evolved into a vibrant arts complex incorporating restaurants, event spaces, film shoot locations and an off-West End theatre on the rear ground floor.



SPACE

FOR BUSINESSES LARGE AND SMALL

The Menier Building is undergoing refurbishment to provide modern office space with high functionality and comfort, while retaining all the charm and character of this special building.

Bathe in the vast amounts of natural light that descend on an open space that is easily configured to your unique needs.

Enjoy meeting rooms and stylish kitchens which compliment the nearby shower and lockers facilities for cyclists pedal-powering in and out.



CGI of Fourth Floor



Second Floor Pre-Refurbishment

ARCHITECTURE

A tenant themselves of the Southwark Square Portfolio, and operating from their studio overlooking the Menier Building, LA London Architects are one of London's premium architectural practices designing and delivering some of the finest projects across the residential, retail, workplace and hospitality sectors.

Their approach to the work on The Menier Building respectfully renovates to provide a modern workplace while protecting and celebrating the history and character of this 1860s warehouse. They are achieving this by retaining and reusing materials where possible, with a restrained and sympathetic choice of new materials and careful consideration of how new and old come together.



CGI of Second Floor



DETAIL

DEVIL IS IN THE DETAIL

The Menier Building has a wealth of original architectural features, from its striking classic London brickwork, large wooden beams, and robust cast iron supports to huge sash windows and a capacious loft on the fourth floor.



BELONG

COMMUNITY

A CHOICE COLLECTION - SOUTHWARK SQUARE LTD

The Menier Building is managed by Southwark Square, a boutique property management group led by MD Sophie Stade Cohn who also founded the group's bespoke event space offering: Menier Venues.

The building is one of many office and event spaces on the estate offering generous sizes, an abundance of natural light and uniquely stylish interiors.

Tenants range from restaurants, retail and theatre to offices, both serviced and traditionally let, creating a vibrant community of movers and shakers overseen by an on-site management team who are dedicated to building longstanding relationships with clients and tenants.

As a tenant of the Southwark Square portfolio you enjoy discounted rates and preferential bookings in their sought after venue collection for meetings and events, as well as exceptional building management.





PLANS

[BUILDING](#)

[BELONG](#)

[PLANS](#)

[LIFESTYLE](#)

[TRANSPORT](#)

[CONTACT](#)

AREAS

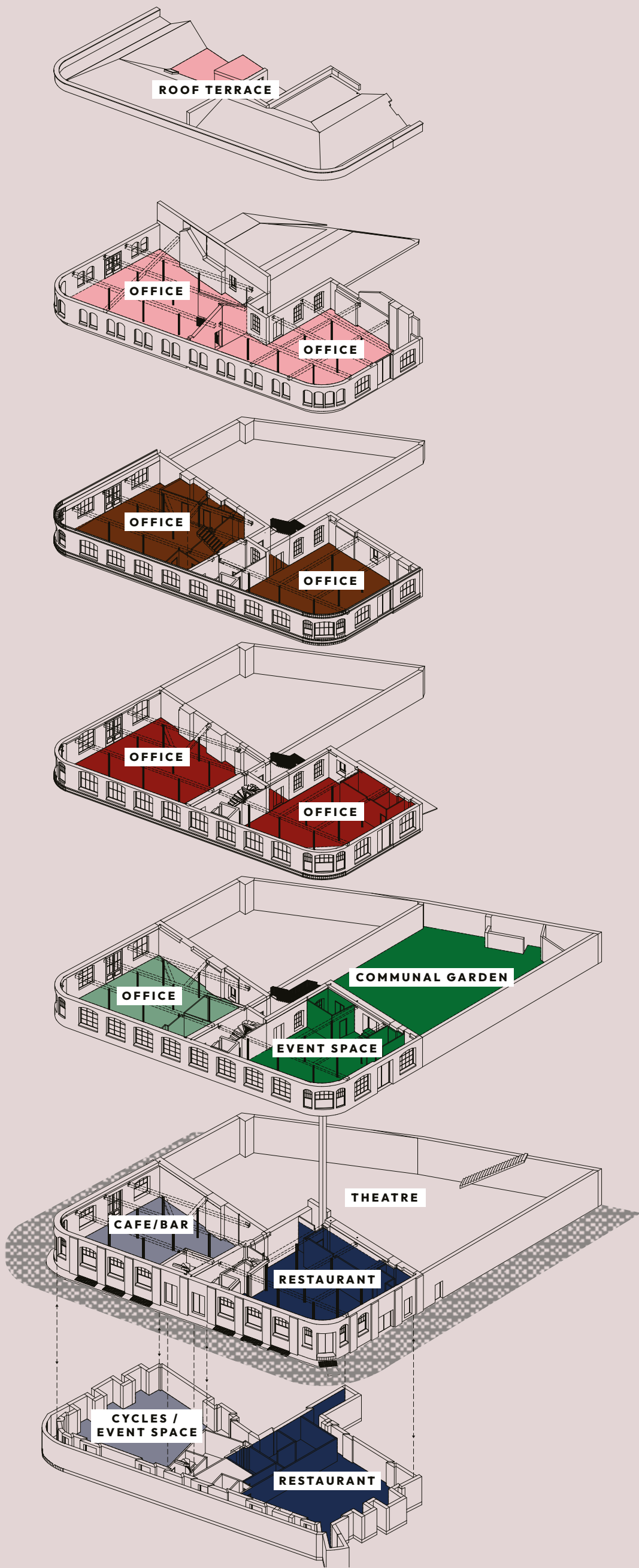
NET INTERNAL AREA SQM

FLOOR	NO.51	NO.53
Fourth	174.62	148.71
Third	171.10	146.54
Second	166.41	142.16
First	164.67	N/A

MENIER LAYERS

The first floor comprises a single office space, with views of the Shard, and the popular Menier Lounge event space.

Each upper floor houses 2 office units, both with meeting rooms included and with access to the communal roof garden at 1st floor level.



4TH FLOOR

Roof Terrace

4TH FLOOR

Offices

3RD FLOOR

Offices

2ND FLOOR

Offices

1ST FLOOR

Office - Available | Single Unit
Menier Venues Event Space
Communal Garden

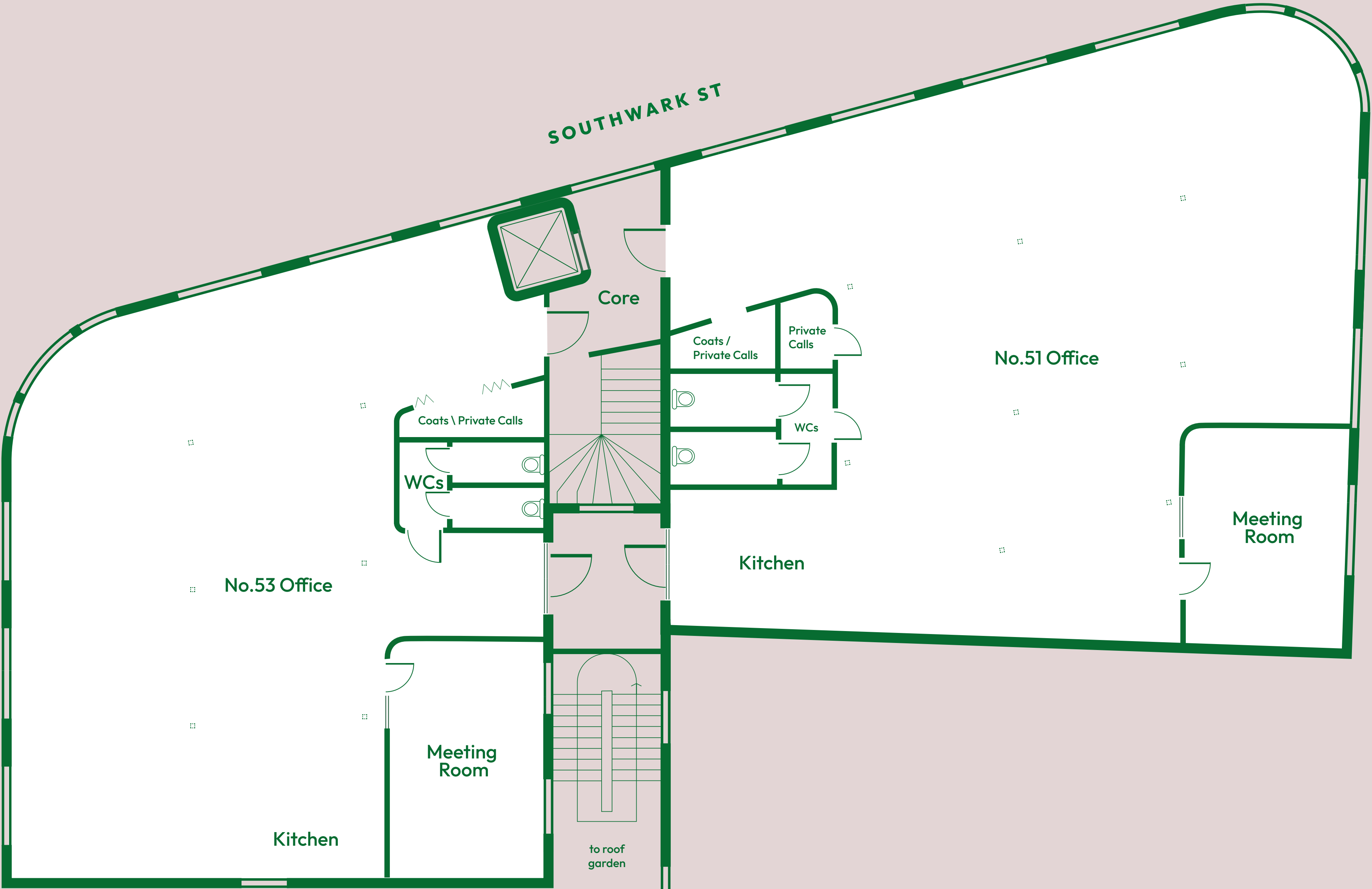
GROUND & BASEMENT

New Cafe/Bar Space
New Restaurant
Menier Chocolate Factory Theatre
Cycles / showers and event space



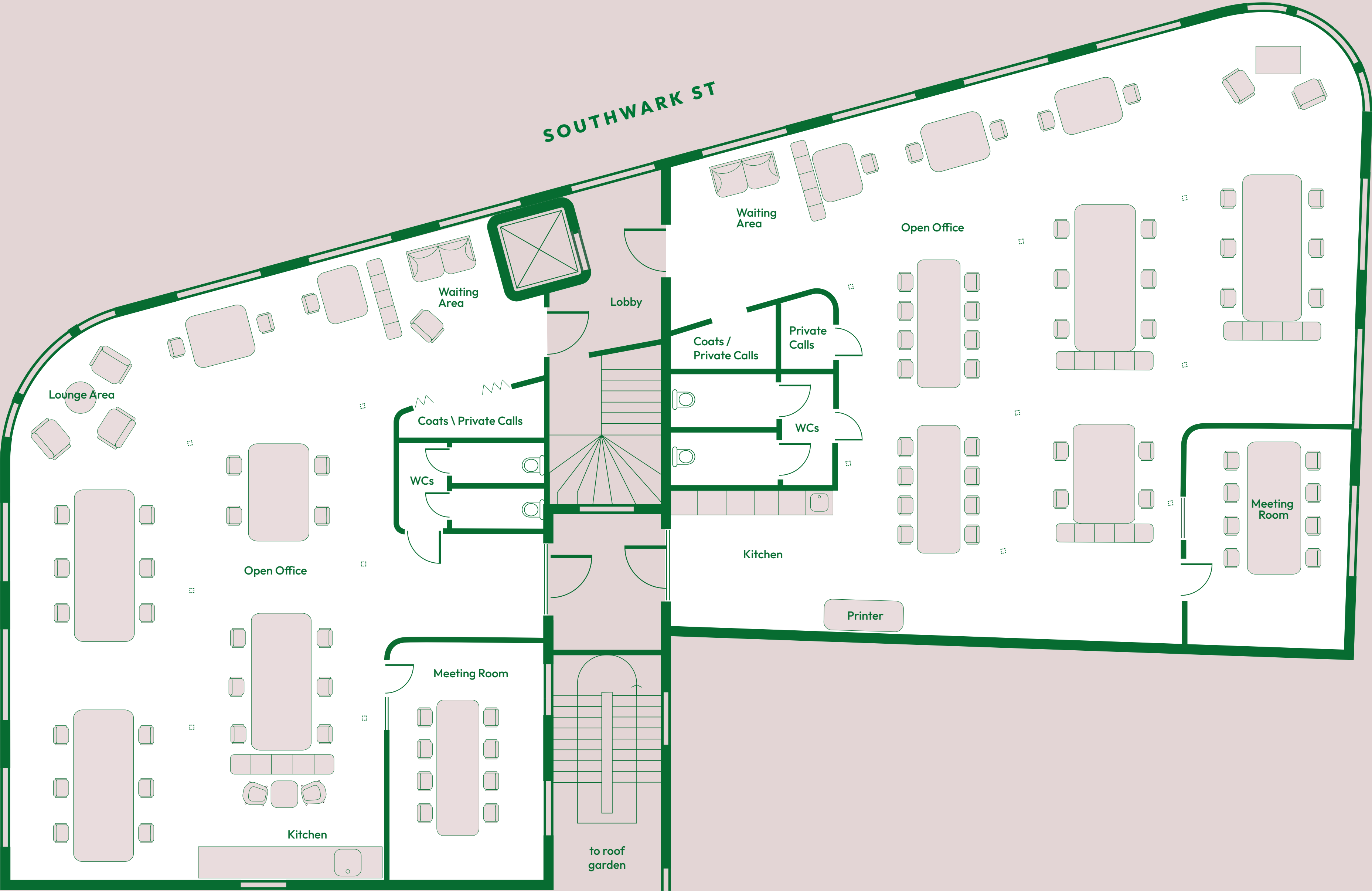
CAT A layout

SPLIT SPACE AREAS - SQ. FT		
FLOOR	NO.51	NO.53
Fourth	1880	1600
Third	1842	1577
Second	1791	1530
First	1772	N/A



Indicative floorplan to reflect 2nd, 3rd and 4th floors

Open plan layout



Indicative floorplan

SPECIFICATION



Retained original architectural features



Lift Access



Communal garden



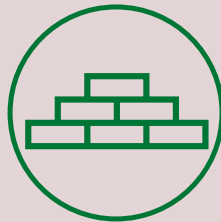
Showers & locker space nearby



Cycle spaces



Air conditioning throughout



Reuse of existing structure



Targeting net zero to landfill



Fresh air supply & extraction



EPC rating A to B



Excellent ceiling heights 2.7-4.7m



Cat A+ or blank canvas options



Smart DALI LED lighting & lighting controls



Openable windows

SUSTAINABILITY

We are passionate about the opportunity we have to create change within our industry, and so every day we take action to evaluate and improve our practices.

Reduce, reuse and recycle – our simple mantra to lower our carbon emissions.

A wide-angle photograph of a city street at dusk. On the right, a large, ornate brick building with many arched windows dominates the foreground. In the background, the Shard skyscraper is visible against a colorful sky of pinks, oranges, and blues. A blue bridge crosses the street in the distance. Pedestrians, cars, and bicycles are scattered throughout the scene, adding a sense of life and movement. Overlaid in the center is the word 'LIFESTYLE' in large, bold, multi-colored letters.

LIFESTYLE

[BUILDING](#)

[BELONG](#)

[PLANS](#)

[LIFESTYLE](#)

[TRANSPORT](#)

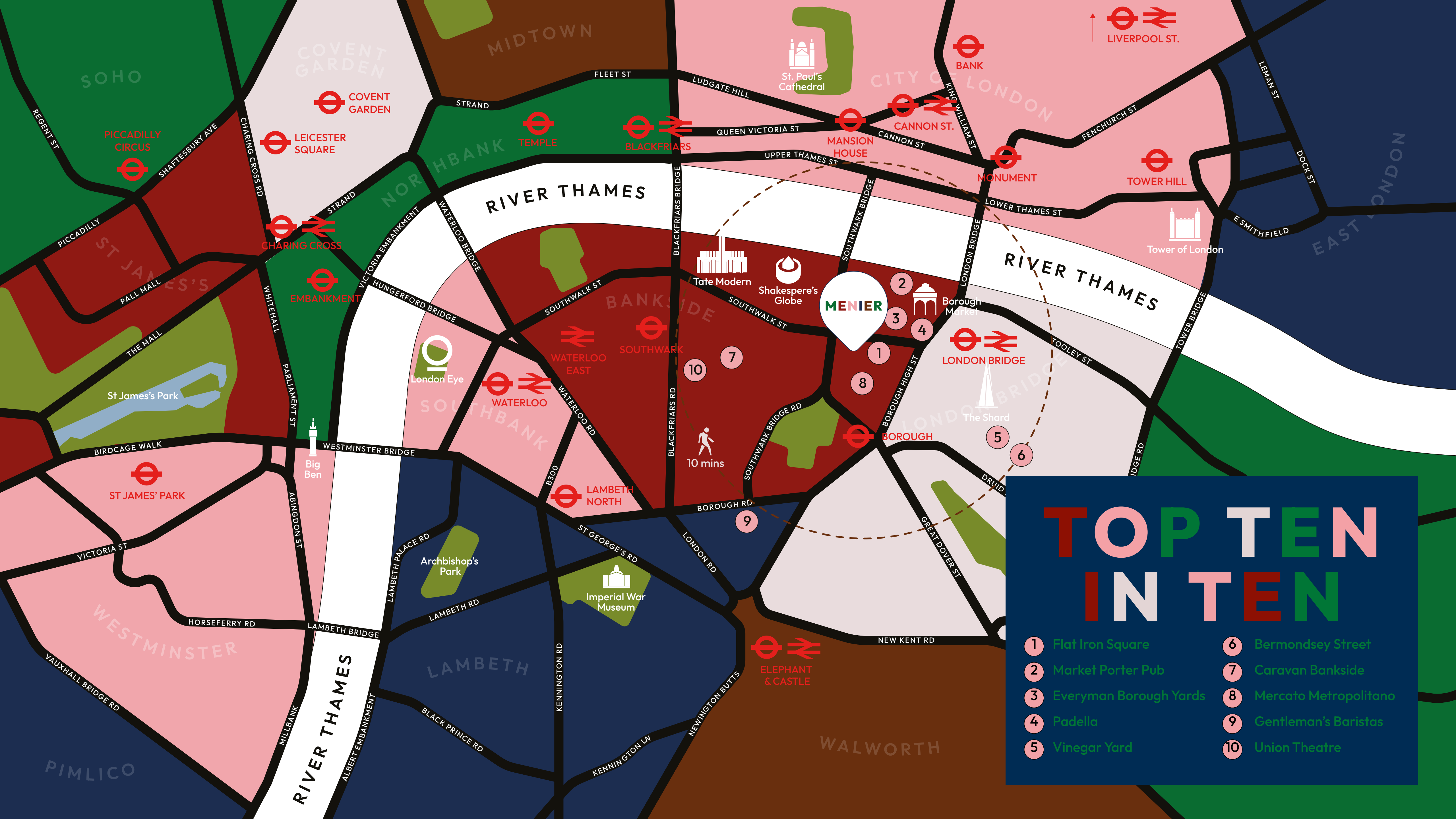
[CONTACT](#)

TASTE THE AREA - BANKSIDE

One of the oldest boroughs in London, Bankside is now one of its newest. It's an atmosphere that's deliciously different thanks to the twisty streets, the hidden pubs, the fine restaurants, the banging bars and all the capital's creative types coming up with ground-breaking work in studios, ateliers and offices everywhere.

The Menier Building is central to the new Bankside – historic, iconic and forward thinking all at once, it's an office space like no other.





TOP TEN IN TEN

- | | |
|--------------------------|-------------------------|
| 1 Flat Iron Square | 6 Bermondsey Street |
| 2 Market Porter Pub | 7 Caravan Bankside |
| 3 Everyman Borough Yards | 8 Mercato Metropolitano |
| 4 Padella | 9 Gentleman's Baristas |
| 5 Vinegar Yard | 10 Union Theatre |



TAKE YOUR PICK

From the famous Borough Market just around the corner, to Flat Iron Square under the arches next door with its beer garden, food traders, weekly DJs and more, the area is great for eating and drinking. Discover out of the way pubs and a wealth of new restaurants.



THE NEIGHBOURHOOD

Perfectly nestled between some of London's top attractions including the Shard, London Bridge and Tate Modern, which draws 5.7m people annually.

16M visitors a year are drawn to Borough Market, and percolate through the area to find more eateries and hidden gems.



Borough Market



Bar Carrubo



Borough Market



The Market Porter



O'ver



FITNESS COMES FIRST

The Menier Building is a 'feel-good' building, designed to enhance your working day. For those who want to work out though, the area is packed with great gyms and buzzy health centres including 3Tribes Hot Yoga and Float Tanks. You'll find F45 with its global fitness community specialising in innovative, high-intensity group workouts just across the road, while there are two Fitness First gyms at London Bridge, a Third Space at Tower Bridge, and a 1Rebel in Bankside.



BURN

BURN

BURN

CULTURE



London landmarks pepper Bankside, from the Tate Modern to Shakespeare's Globe, The Africa Centre to The Golden Hinde and Southwark Cathedral, all bracketed by the iconic Shard to the East and St Paul's to the West. The small but highly successful 150 seat studio Menier Theatre at the rear of the Menier Building is home to a variety of plays and musicals, as well as staging live music concerts and comedy.





TRANSPORT

[BUILDING](#)

[BELONG](#)

[PLANS](#)

[LIFESTYLE](#)

[TRANSPORT](#)

[CONTACT](#)

TRAVEL PICK 'N' MIX

London Bridge rail station is minutes away with access to the Jubilee and Northern tube lines.

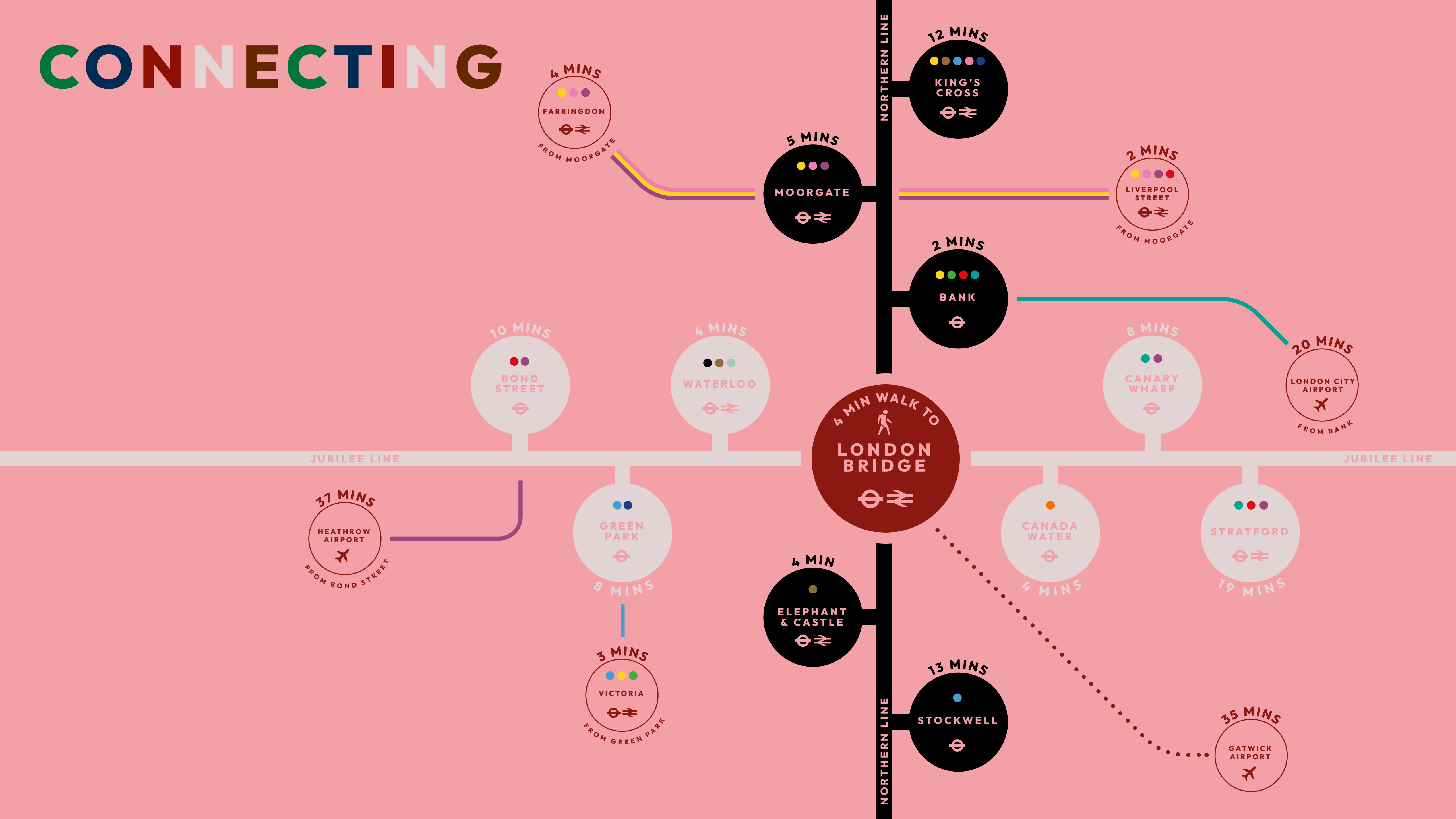
Buses take you off in all directions while cycle lanes have been prioritised to make your pedalling commute perfect.

And the regular Uber boat travels up and down the Thames all day.

All aboard!



CONNECTING



GETTING AROUND


Walk Times from
MENIER

4
MINS

London Bridge




6
MINS

Borough




11
MINS

Southwark




13
MINS

Blackfriars




15
MINS

Cannon Street



Cycle Times from
MENIER

1
MINS

London Bridge




5
MINS

Bank




14
MINS

West End



18
MINS

King's Cross




24
MINS

Canary Wharf


CONTACT

Ben Locke

T: 020 7234 9639

E: benlocke@fieldandsons.co.uk

FIELD & SONS
COMMERCIAL

A development by

Menier Venues



SOUTHWARK
SQUARE

Subject to contract. Field & Sons for themselves and the vendor of this property give notice that these particulars do not form, or form part of, any offer or contract. They are intended to give fair description of the property and whilst every effort has been made to ensure their accuracy this cannot be guaranteed. Any intending purchaser must therefore satisfy themselves by inspection or otherwise. Neither Field & Sons, nor any of its employees, has any authority to make or give any further representations or warranty whatsoever in relation to this property. All prices and rents quoted are net of vat. Designed by Smart Soho. May 2023