



KINGS PARK ROAD  
SOUTHAMPTON, SO15 2AT

CROWN  
HOUSE

KINGS SUITE

 **Omega RE**



## Design Intent

Ground and Third floor / Crown House / Kings Park  
Road / Southampton,  
23rd March 2026.



01. Feature paint to walls and skirtings

02. Addition of a ceiling detail with feature lights

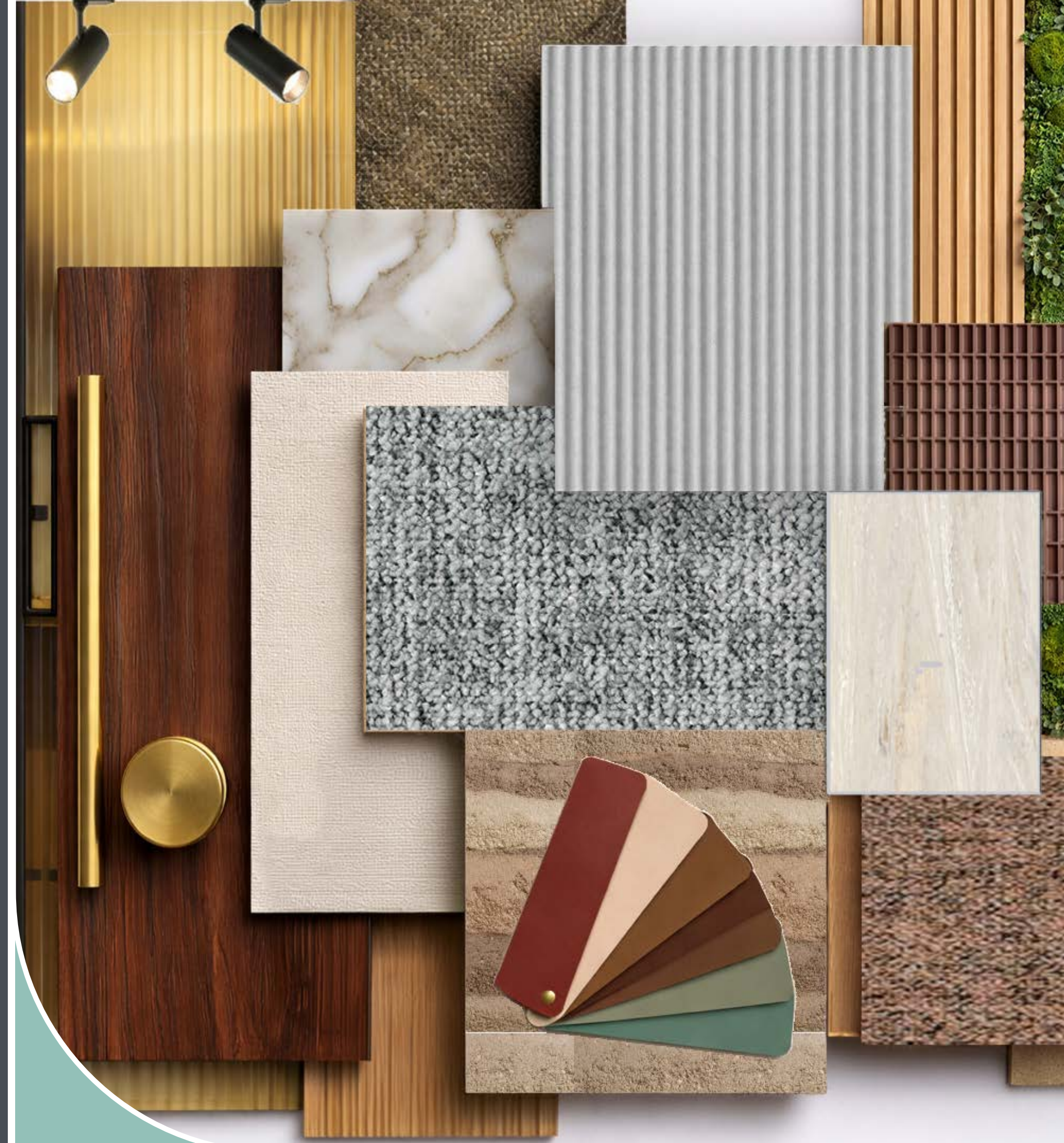
03. Re-upholstery of chairs allows of a cost effective solution, giving a fresh look & feel

04. Meeting table top can be changed to get a warmer wooden finish

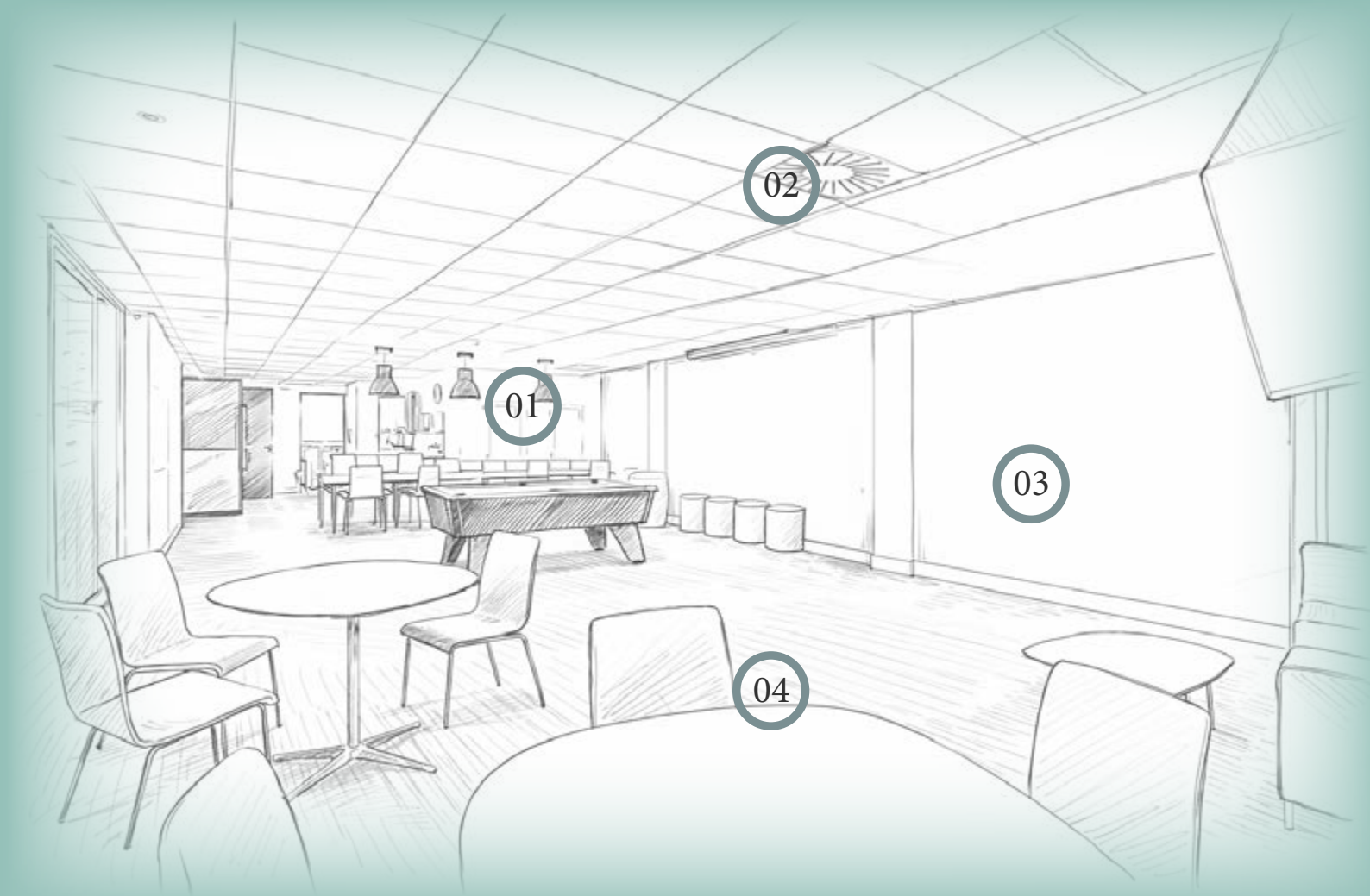
Look & Feel  
Scheme 1: Design Thinking



SCHEME 1 - Natural Dark wooden tones with brushed bronze and muted dull burgundy and muted pastel greens form the look & feel for the scheme, Creating hospitality led experience across the workplace, this scheme is best suited for law , investment and similar sectors.



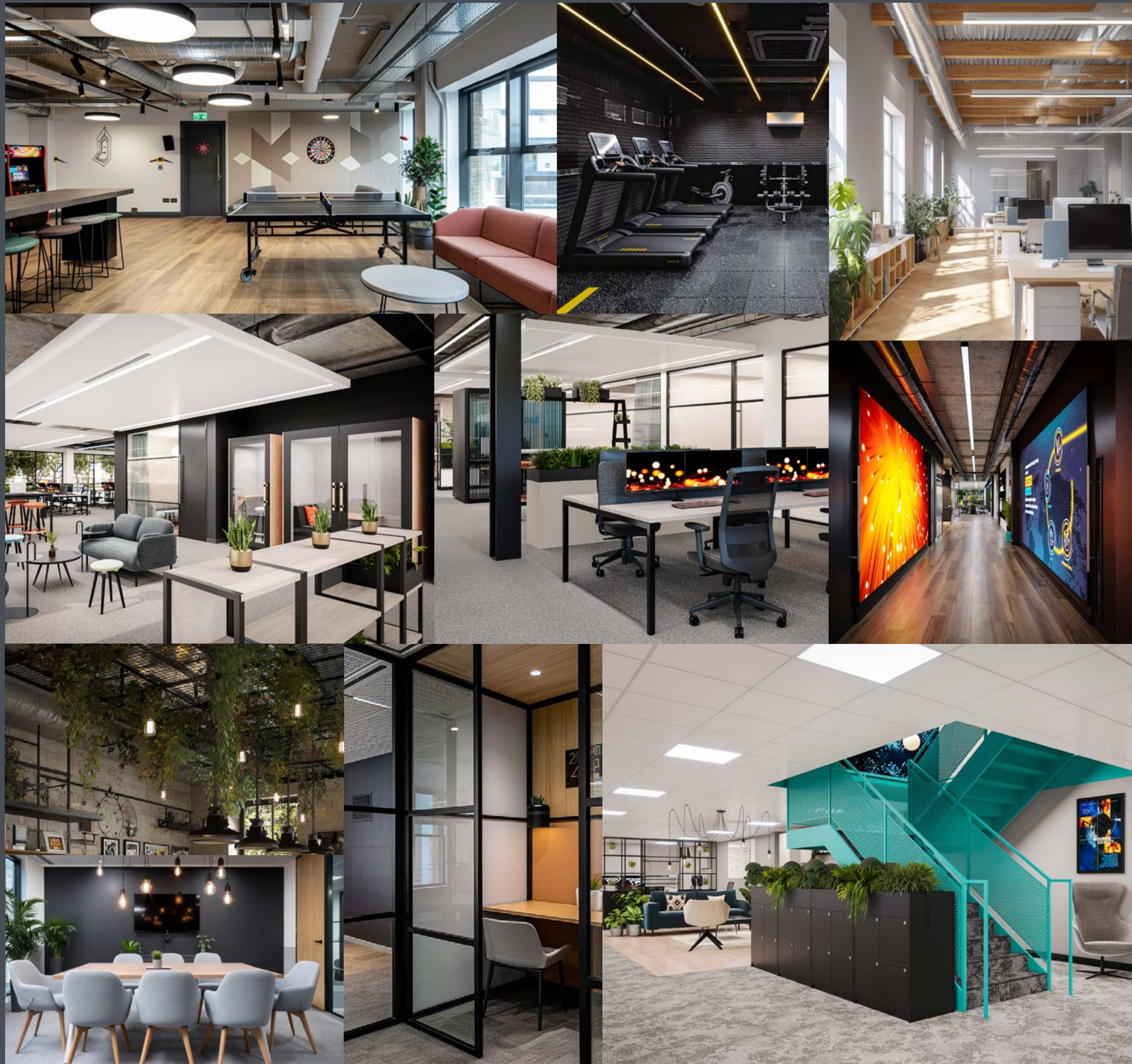
Design Enhancements  
Scheme 1



- 01. Replacing existing pendant lights with addition of a feature suspended ceiling, zoned above the breakfast bar/ games area,
- 02. Feature paint to existing grid ceiling
- 03. Introduction of biophilia with painted batons, shelving/ wall lighting to create a cohesive wellbeing space
- 04. Refurbished table tops with Newly upholstered breakout chairs provide a cost efficient upgrade,

Look & Feel  
Scheme 2: Design Thinking





01. Vinyl wrap to existing teapoint

02. Replacing existing pendant lights,

03. Refurbished table tops with newly upholstered breakout chairs provide a cost efficient upgrade,

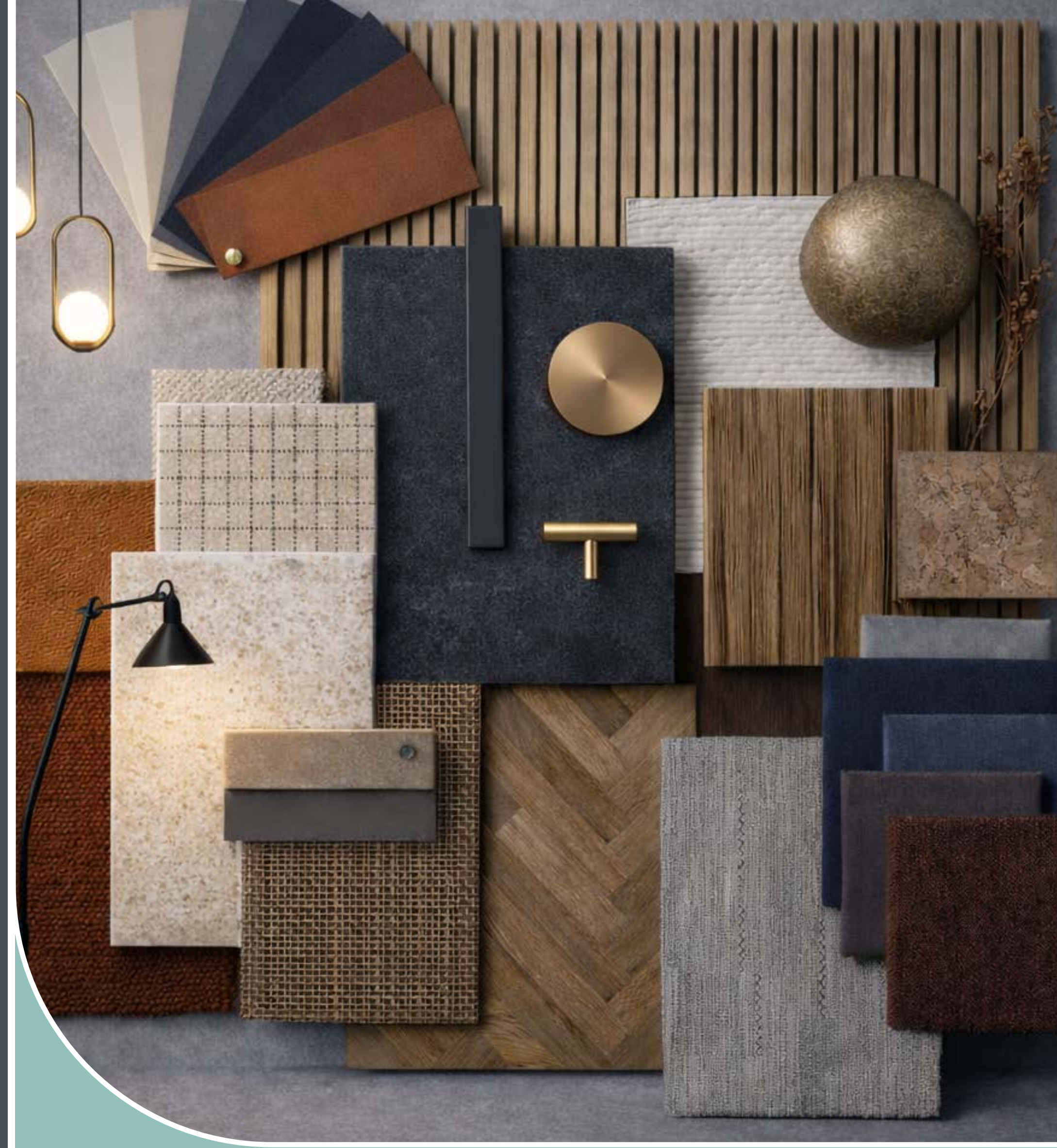
04. If viable, upgrades to the flooring creating a feature space

## Look & Feel

### Scheme 3: Design Thinking



SCHEME 3- Metal textures, with coated exposed finishes, complementing neutral fabrics and deep toned muted accents form the look & feel. The scheme creates an environment, suited to technology and media workplaces.



## Design Enhancements Scheme 3



**AUTEX ACOUSTICS - acoustic wall coverings & ceiling products**

- Achieved Carbon Neutral benefits across all available products, whilst using a recycled PET base.
- Sound absorption allows the space to feel comfortable to work and be present in, creating a sustainable environment through noise absorption for employees.



**FORBO - soft floor coverings**

- Embraces using recycled content as high as 75% with certain products.
- They provide additional sustainable options to increase this aspect by using Econyl, using yarns that are made from 100% regenerated material.
- Underfoot sound absorption considered with cushioned backing available to improve user wellbeing.



**KVADRAT - upholstery fabric**

- Committed to the Gender Equality Act to support individuals development to reach their full potential.
- Has a clear vision in place to help achieve the desired sustainable goals



**AMTICO - luxury vinyl tile flooring**

- Reduces present bacteria over a 24hr period.
- Option to increase acoustic quality to reduce noise pollution.
- Amtico BIO option by exploring renewable biomass alternatives to replace fossil fuel feedstocks.

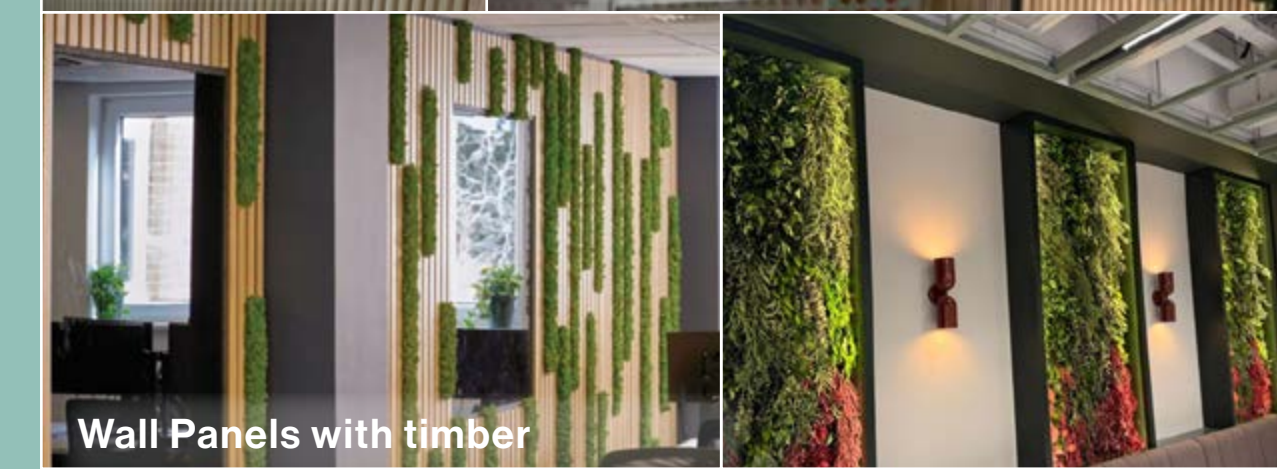
**APPLIED USE CASES**



**BIOPHILIA TYPES**



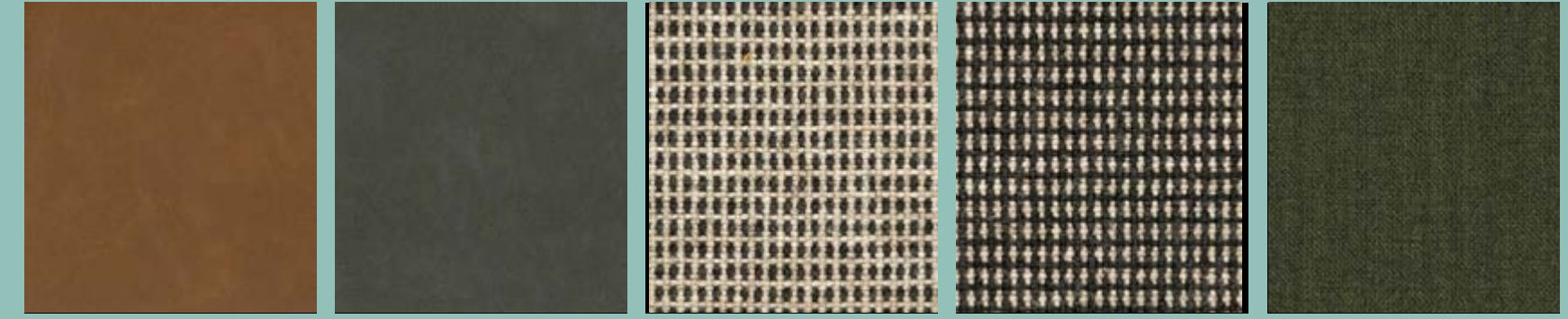
**APPLIED BIOPHILIA OPTIONS**



Reception/Soft Seating Options



Phone Booth Options



**WORKAGILE MIIBOX**

- Exceptional acoustic performance - Class A @ 31dB
- Sustainable design – Carbon footprint of just 230kg CO<sub>2</sub>e from cradle to gate
- Superior Ventilation – 149 Air Changes per Hour (ACH) showing truly effective air flow and comfort.
- Scandi Design Intent – solid Oak handle and soft oak desk, brings softness and warmth.
- 5-year warranty



**MAX - CALMA SMALL PHONE BOOTH**

- Class A acoustic rating
- Height adjustable desk with power
- Occupancy indicator
- Laminated glass
- Dimmable LED lights
- 5-year warranty



**AHREND QABIN**

- Flexible. Can be adapted
- ISO 23351 class B speech level reduction
- Optional wheels
- Sustainable solution
- Seated or standing height table option
- Control panel and motion sensor for light and ventilation
- 10-year warranty
- 5-year warranty

Reception/ Work pods  
Suggestions



Finishes/ Fabrics



Breakout/ lounge area



Meeting rooms



Reception/ Soft seating spaces



Open Plan area



**Open Plan area- Furniture Considerations**

01. High back task chairs can cause neck strains over longer periods of use and are ergonomically not suited for touchdown workstations,

Replacing with low/mid back task chairs will ensure long term well being.

02. Changing the finishes on the privacy screens provide opportunity for space enhancement while being cost efficient.

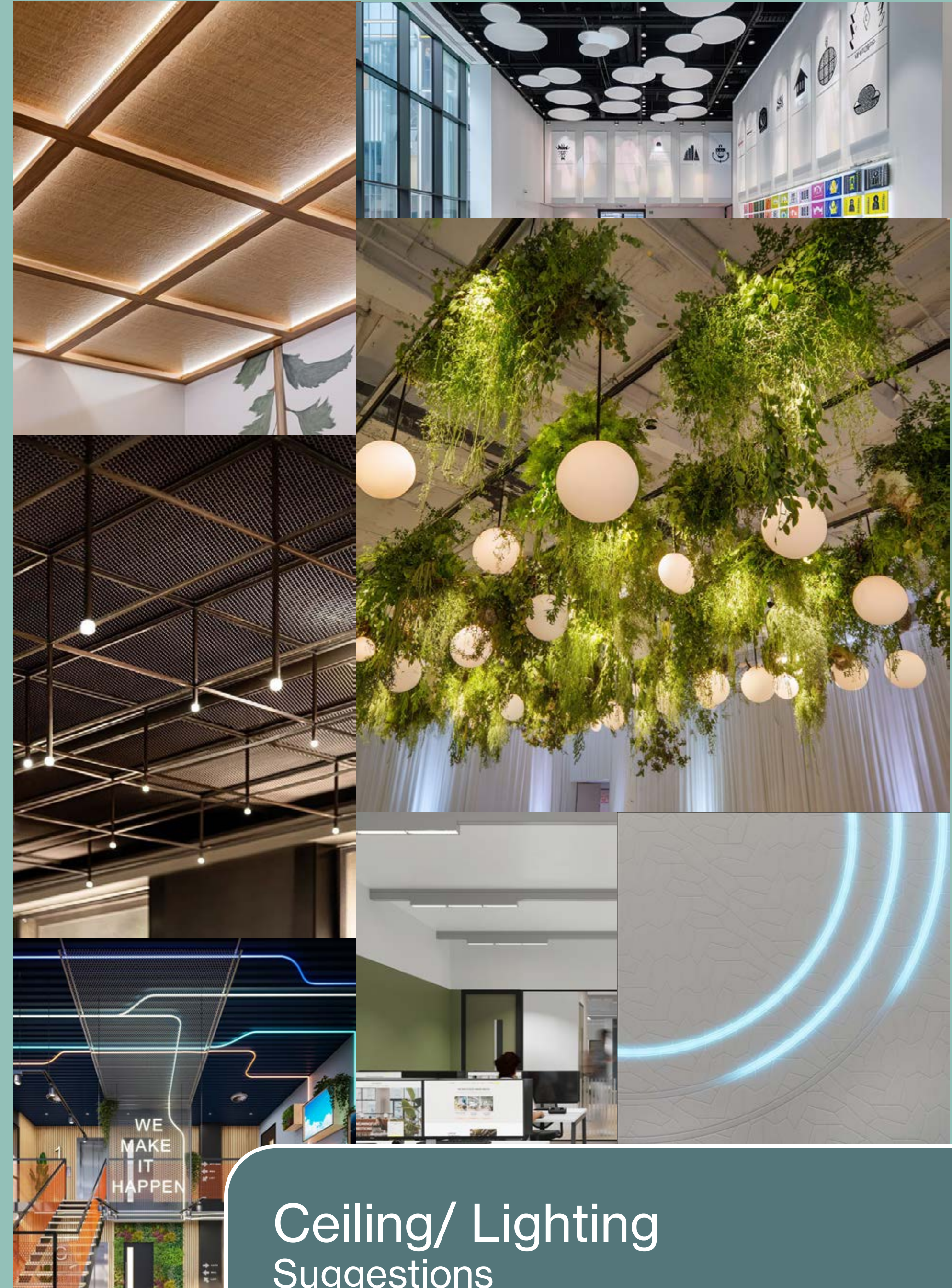


**Building Reception area- Furniture Considerations**

01. Addition of laptop tables along the banquette seating.

02. Further exploration on layouts for options of clustered integrated seating, as per daily use and to elevate visitor experience.

**Furniture Settings Suggestions**



Ceiling/ Lighting Suggestions



CASE STUDY 01

# SPACEMADE

FLOOR FIRST FLOOR

LOCATION YELLOW BUILDING, LONDON

SIZE 19,000 SQFT

IN COLLABORATION WITH SPACEMADE, WE DELIVERED A 19,000 SQ.FT COWORKING HUB DESIGNED FOR LONDON'S FASHION AND CREATIVE COMMUNITIES.

Inspired by boutique hotels and galleries, Studio Y challenges conventional coworking norms through a rich mix of materials, pattern, and texture that subtly reference the heritage of Monsoon Accessorize and its iconic yellow building. Curated arrival and social zones foster community and collaboration, while flexible work areas support both focus and interaction. A central lounge anchors the space, promoting connection and movement throughout. With a hospitality-led feel, this boutique workspace, brings Spacemade's ethos of crafting community experiences through design to life. Alongside the creative, we also got hands-on with some fun technical highlights- like a whole new mechanical system.





CASE STUDY 02

# ONE STATION HILL

FLOOR RECEPTION AND LEVEL 15

SCOPE CAT A+ FITOUT

LOCATION ONE STATION HILL, READING

SIZE 18,000 SQFT





CASE STUDY 03

# RLAM

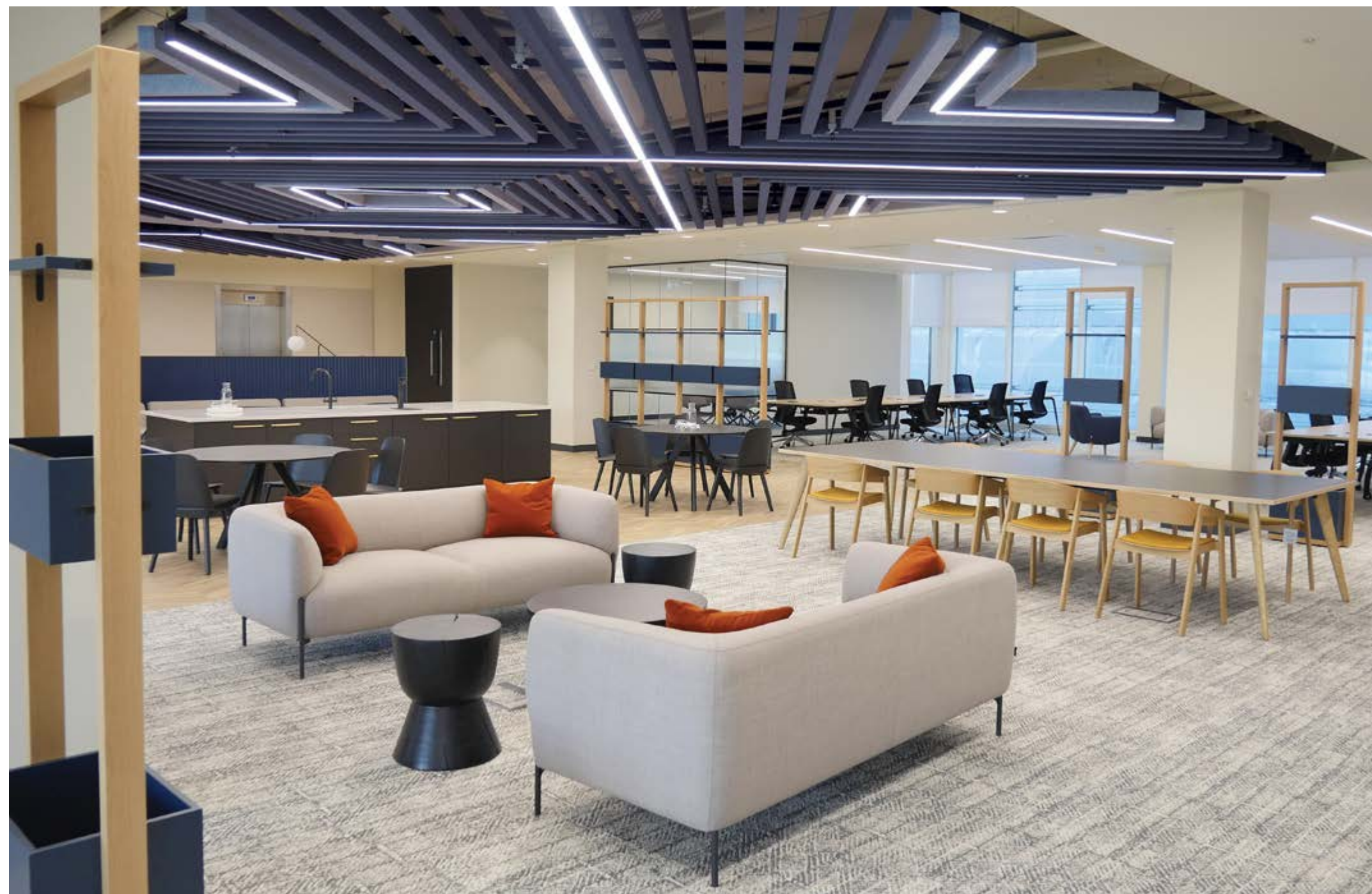
FLOOR LOWER GROUND, 2ND, 4TH, 6TH AND 7TH FLOOR

SCOPE CAT A+ FITOUT

LOCATION 10 CHISWELL STREET, LONDON

SIZE 50,000 SQFT / £6.5M

PHASED CAT A & B REFURBISHMENT PROJECTS ACROSS MULTIPLE FLOORS OF CENTRAL LONDON OFFICE BUILDING





CASE STUDY 04

# SPELTHORNE, ROUNDWOOD

FLOOR

SCOPE	CAT A+ / CAT B FITOUT
LOCATION	STOCKLEY PARK, UXBRIDGE
SIZE	18,000 SQFT
VALUE	£3.5M

Complete Cat A & B refurbishment of building, including common parts on behalf of local authority building owner.

The works included full Mechanical & Electrical systems replacements, bespoke joinery, structural works & exterior landscaping.





CASE STUDY 05

# FIDELITY

FLOOR

PART 1ST FLOOR,

SCOPE

CAT A+ FITOUT

LOCATION

PHOENIX HOUSE, READING

SIZE

4,400 SQFT



Further Online Case Studies >>



Thank You

CURVE WORKPLACES, 01344 528 048, THE LIGHTBOX, WILLOUGHBY RD, BRACKNELL RG12 8FB,  
WWW.CURVEWORKPLACES.CO.UK

