



THE SKY BAR

PICCADILLY
LONDON

EUROPE'S MOST EXCITING ROOFTOP OPPORTUNITY IN EUROPE'S MOST EXCITING CITY

With unrivalled 360° views across every major London landmark from the 12th and 13th floors of the famous Trocadero, outstanding architectural details, fantastic double-height space, and one of the largest external terraces in London, this is truly a once-in-a-generation opportunity.

THE OPPORTUNITY

An unrivalled opportunity, The Sky Bar is positioned in the heart of the West End of London, set amongst global flagship retailers and some of the world's best hotels, restaurants, bars and clubs. Where Soho, Covent Garden, Mayfair and Theatreland convene, this is a destination above all others. The newly developed space offers striking architecture and incredible views through full-height glazing alongside an unparalleled external terrace.

DEMISE

Ground floor	4,693 sq ft (436 sqm)
Internal space (12 th & 13 th floors)	14,769 sq ft (1,372 sqm)
Outside terrace (12 th floor)	5,576 sq ft (518 sqm)

PREMISES LICENSE

- Existing license in place
- Up to 3am
- 1,000 person capacity



THE SKY BAR



PICCADILLY, LONDON

THE
SPACE



THE SKY BAR

PICCADILLY, LONDON

THE
SPACE



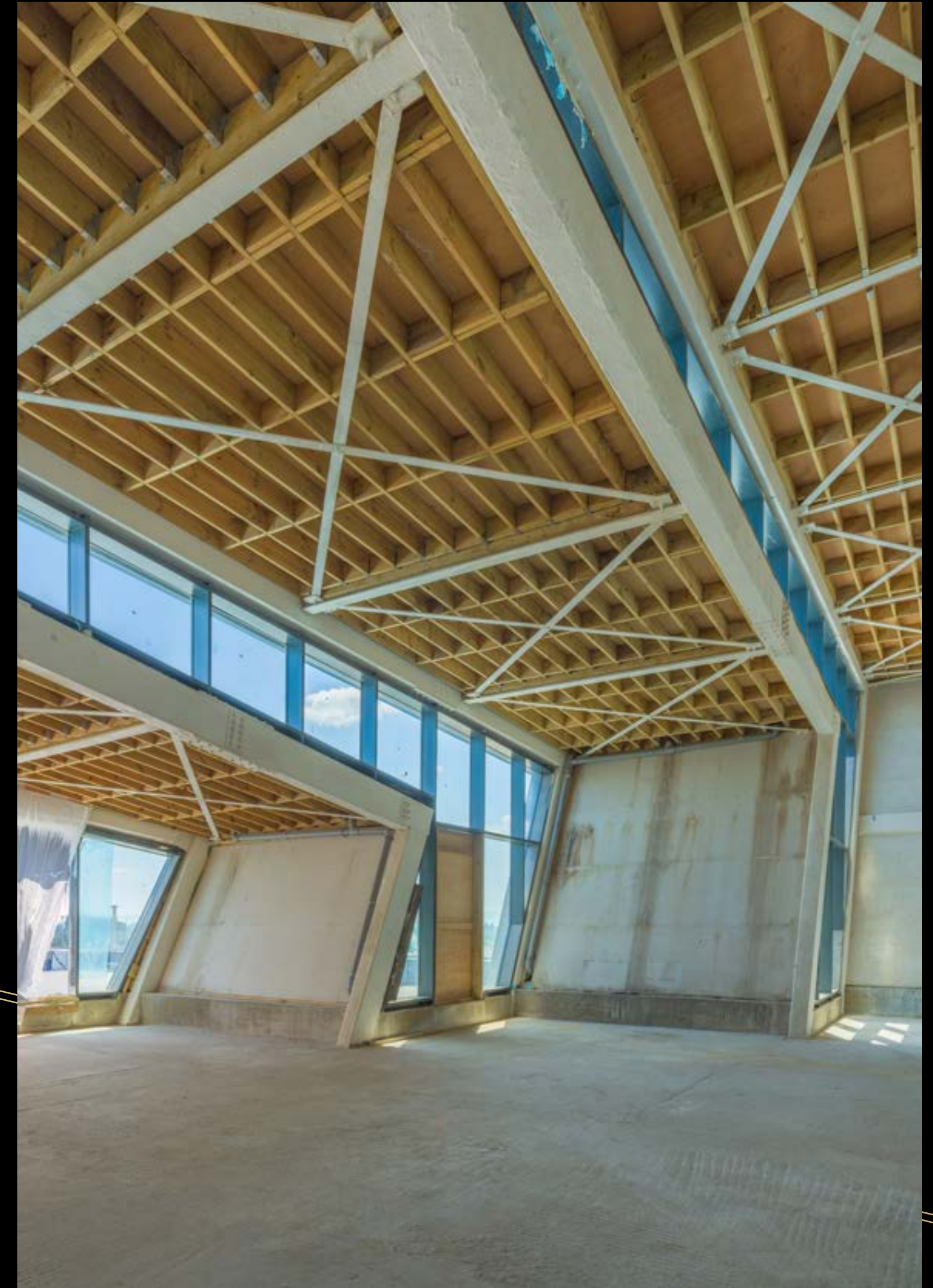
THE SKY BAR

PICCADILLY, LONDON

THE
SPACE



THE SKY BAR



PICCADILLY, LONDON

THE
SPACE



THE SKY BAR

PICCADILLY, LONDON

INSPIRATION

The Sky Bar offers the opportunity to create an unrivalled space to match the breath-taking views of the London skyline and to open a venue which will be recognised on a global stage.



THE SKY BAR

PICCADILLY, LONDON

BE A PART OF THE STORY

The Sky Bar sits on top of the Trocadero, which is going through an extraordinary transformation. With the opening of the new lifestyle concept 728-bedroom Zedwell Hotel as the centrepiece of the building, and several new outstanding restaurant and leisure brands opening soon, the Trocadero is positioning itself as the heart of the West End.



Leicester Square



Arts Quarter



Piccadilly Circus



The West End



Zedwell Hotel

THE LOCAL AREA

The building is located in one of the most famous addresses in the world with 2 million weekly footfall between Leicester Square and Piccadilly. As part of the Heart of West End bid, the Trocadero is at the centre of the new Arts Quarter, which will bring together the world's most iconic cultural institutions, artists, creatives, hotels, cafés, restaurants and retail to create the West End's newest destination.

The entrance to the new venue will be via a demised ground floor unit on Rupert Street, which has become a gourmet hotspot with the likes of The Palomar, The Blue Posts, Hovarda and Speedboat Bar by JKS Restaurants. This means the venue will be next to the very best restaurants, a new Arts Quarter, the incredible West End Theatres, and, of course, some of the best retail and bar venues in the world.



- | | |
|------------------------|-----------------------|
| 1. Picturehouse Cinema | 12. The Lyric Theatre |
| 2. Sophie's Steakhouse | 13. Macellaio RC Soho |
| 3. The Windmill | 14. Gielgud Theatre |
| 4. Blacklock | 15. Century Club |
| 5. Bocca Di Lupo | 16. Hovarda |
| 6. 5 Archer Street | 17. The Palomar |
| 7. Shoryu | 18. Speedboat Bar |
| 8. Ham Yard Hotel | 19. The Blue Posts |
| 9. Dirty Bones | 20. W Hotel |
| 10. Brasserie Zedel | 21. The Londoner |
| 11. Whole Foods | 22. Fallow |



THE NEIGHBOURS



Bob Bob Ricard



Picturehouse Cinema



Sophie's Steakhouse



Gielgud Theatre



Palomar



W Hotel



Fallow



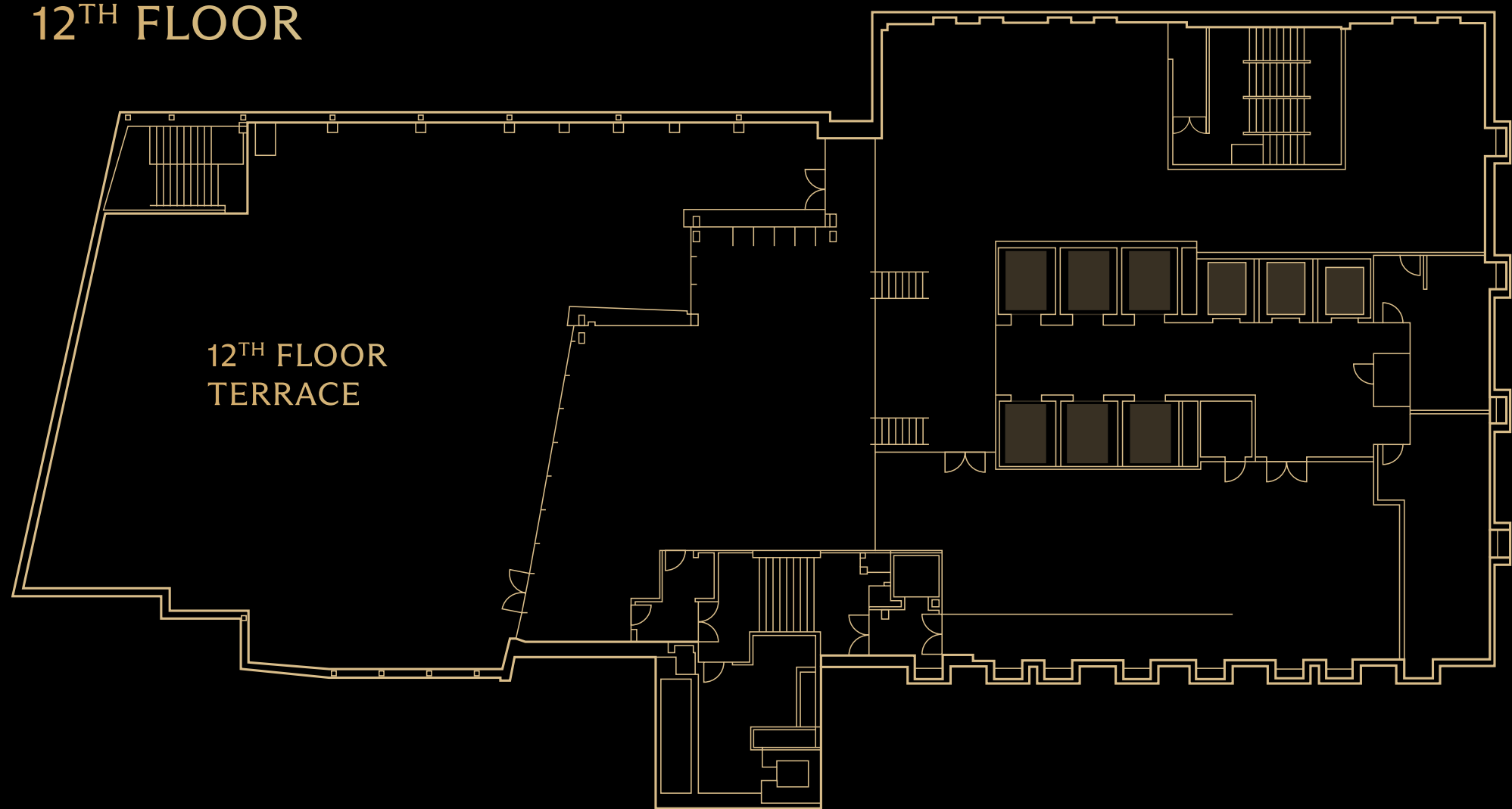
Ham Yard Hotel



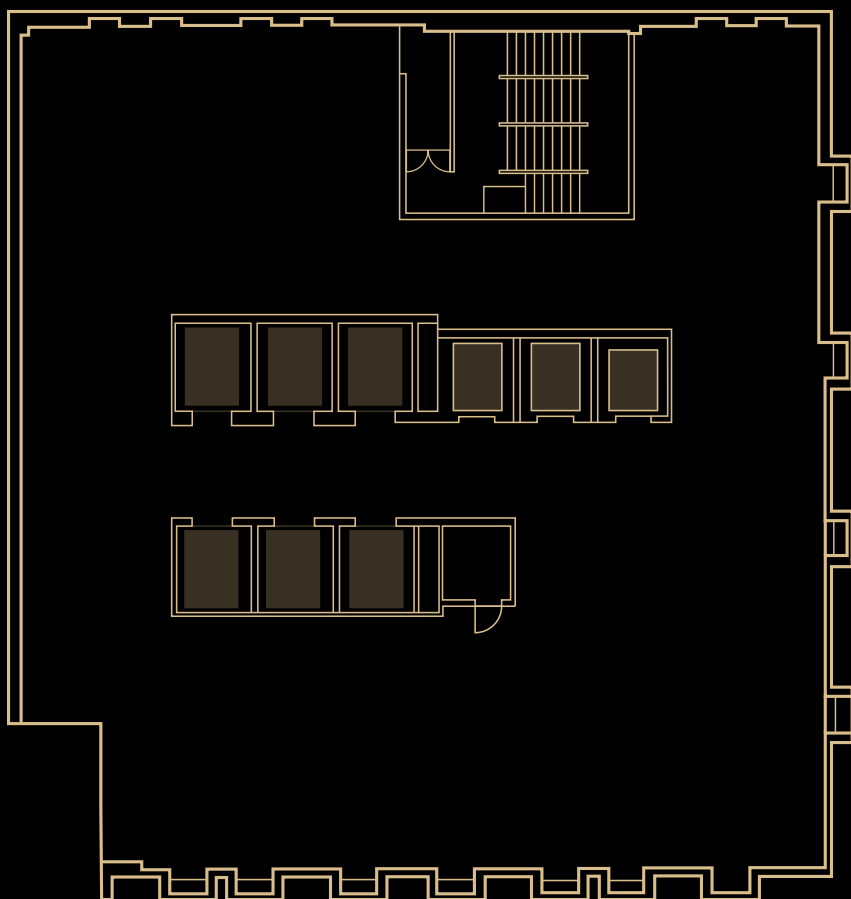
The Londoner

FLOOR PLANS

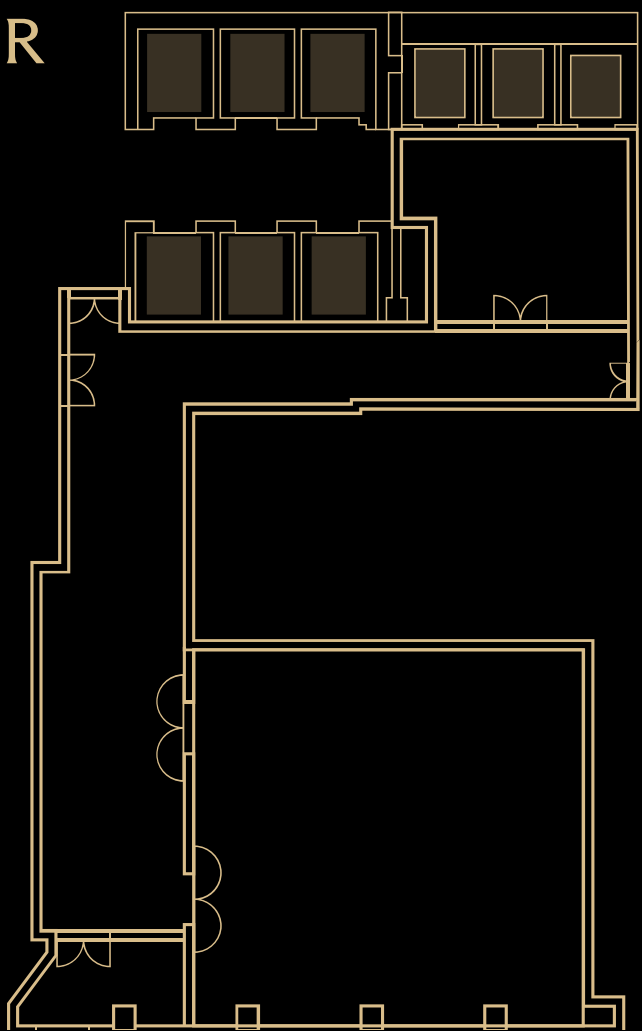
12TH FLOOR



13TH FLOOR



GROUND FLOOR



RUPERT STREET ENTRANCE

Ground Floor	4,693 sq ft (436 sq m) GIA
12 TH Floor	8,687 sq ft (807 sqm) GIA
13 TH Floor	6,082 sq ft (565 sqm) GIA
TOTAL	19,462 sq ft (1,808 sqm) GIA
Outside Terrace	5,576 sq ft (518 sqm) GEA

CONTACT

For all leasing enquiries, please
contact sole retained agents P-THREE.

P-THREE

PEOPLE . PLACES . PROPERTY

Thomas Rose

+44(0) 7793 024 403

thomas@p-three.co.uk

Kate Sadler

+44(0)7964 555 932

kate@p-three.co.uk

P-THREE, as sole agents for the vendors or lessors of this property, gives notice that: (i) These particulars are set out as a general outline for guidance only, do not form any part of an offer or contract and must not be relied upon as statements or representations of fact; (ii) All descriptions, dimensions, photographs, references to condition and necessary permissions for use and occupation and other details are given in good faith and are believed to be correct, but intending purchasers or lessees should not rely on them as statements or representations of fact and must satisfy themselves as to their correctness; (iii) No person acting on behalf of P-THREE has any authority to make or give any representation or warranty whatsoever in relation to this property. P-THREE accepts no responsibility for any statement made in these particulars; (iv) Any areas, measurements or distances given are approximate. Unless otherwise stated, all purchase prices, any rents or outgoings are correct at the date of publication, and unless otherwise stated, are quoted exclusive of VAT; (v) appeared at the time they were taken; and; (vi) Any descriptions given of this property cannot be taken to imply this property is in good repair, has all necessary consents, is free of contamination, or that the services and facilities are in working order. Intending purchasers or lessees are advised to carry out their own investigations.

THE SKY BAR



PICCADILLY, LONDON