



321 King's Road

Chelsea, London, SW3 5EP

Retail Showroom

736 sq ft
(68.37 sq m)

Alex Ogilvie

07414 281406

Alex@Meridiancp.co.uk

Adam Stackhouse

07889 510036

Adam@Meridiancp.co.uk

- Sought after location
- Prime retail space
- Striking marble floor
- Vast basement storage
- Self contained



321 King's Road, Chelsea, London, SW3 5EP

Summary

Available Size 736 sq ft

Price Business £45,000 PA

Rates EPC Upon Enquiry

Rating C (62)

Description

A supremely rare opportunity to be a part of the sought-after King's Road community, 321 King's Road boasts an elite location in the heart of Chelsea, one of London's most stylish and prestigious neighborhoods. Positioned along this iconic stretch, the property benefits from exceptional visibility and footfall, surrounded by a dynamic mix of renowned boutiques, cafés and restaurants that make King's Road a destination in its own right.

Internally, the property offers a striking and contemporary space designed to impress from the moment you enter. Generous ceiling heights create a remarkable sense of volume and openness, allowing natural and installed lighting to flow beautifully throughout the interior. The space is finished with elegant white walls that enhance the brightness of the premises, while sleek marble flooring adds a refined and luxurious feel, reflecting light and elevating the overall aesthetic of the space.

In addition to the impressive ground floor, the property benefits from a substantial basement level, offering a versatile and expansive area that can be utilised for a range of purposes such as additional retail space, private client areas, storage or operational facilities. The scale of the basement significantly enhances the usability of the property, providing flexibility rarely found along this prime stretch of King's Road.

Combining generous proportions, high ceilings, premium interior finishes and an enviable Chelsea address, 321 King's Road presents a distinctive opportunity for an occupier seeking a sophisticated presence in one of London's most celebrated retail destinations.

Location

Situated on the iconic King's Road, 321 King's Road occupies a prime position in the heart of Chelsea, one of London's most desirable and vibrant neighbourhoods. The area is renowned for its stylish boutiques, cafés and restaurants, offering an exceptional mix of lifestyle, retail and leisure amenities right on the doorstep.

Residents and visitors benefit from immediate access to an array of popular dining destinations including Bluebird Chelsea, The Ivy Chelsea Garden, and Granger & Co., alongside a variety of independent cafés and artisan bakeries. The location is also within easy reach of cultural and leisure attractions such as the Saatchi Gallery and the historic Royal Hospital Chelsea, while the boutiques and weekend market at Duke of York Square further enhance the area's appeal.

Excellent transport connections are provided by nearby London Underground stations including Sloane Square station and South Kensington station, complemented by numerous bus routes running along King's Road, ensuring convenient access to the West End, the City and beyond. Together, these amenities make the location a highly attractive destination for both residents and businesses seeking a prestigious Chelsea address.

Terms

PRICE: £45,000 Per Annum

RETAIL PREMISES: (USE CLASS E): 68.37 sq m / 736 sq ft.

LOCAL AUTHORITY: The Royal Borough of Kensington and Chelsea.

VAT: TBC.

POSSESSION: Full vacant possession immediately on possession of legal formalities.

LEGAL COSTS: Each party is to pay their own legal costs.

VIEWINGS: Strictly by appointment with Sole Agents Meridian CP



Viewing & Further Information

Alex Ogilvie

07414 281406

Alex@Meridiancp.co.uk

Adam Stackhouse

07889 510036

Adam@Meridiancp.co.uk

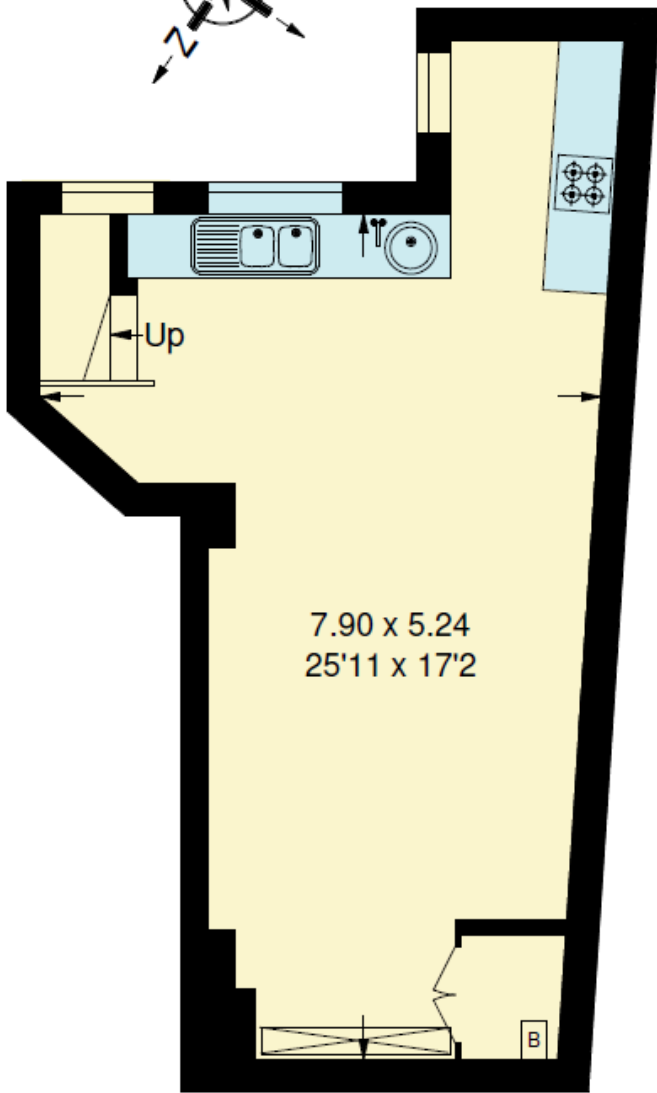
The above information contained within this email is sent subject to contract. These particulars are for general information only and do not constitute any part of an offer or contract. All statements contained therein are made without responsibility on the part of the vendors or lessors and are not to be relied upon as statement or representation of fact. Intending purchasers or lessees must satisfy themselves, by inspection, or otherwise, as to the correctness of each of the statements of dimensions contained in these particulars.



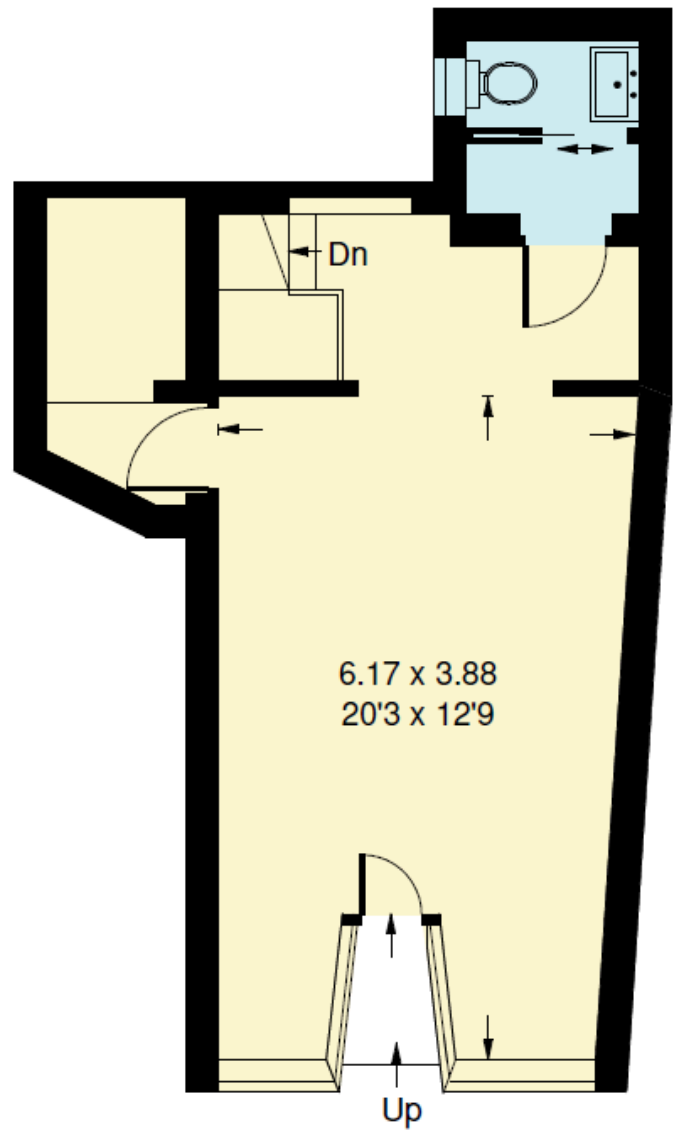
MERIDIAN CP
PARTNERS

Kings Road, SW3

Approx Gross Internal Area
68.4 sq m / 736 sq ft



Lower Ground Floor



Ground Floor

Whilst every attempt has been made to ensure the accuracy of the floor plan, measurements are approximate and not to scale.
No guarantee is given on the total square footage of the property quoted on the plan. Figures given are for guidance.
Plan is for illustration purposes only, not to be used for valuations.



MERIDIAN CP
PARTNERS