

PERRY HOLT

PROPERTY CONSULTANTS

TO LET

High quality open-plan space

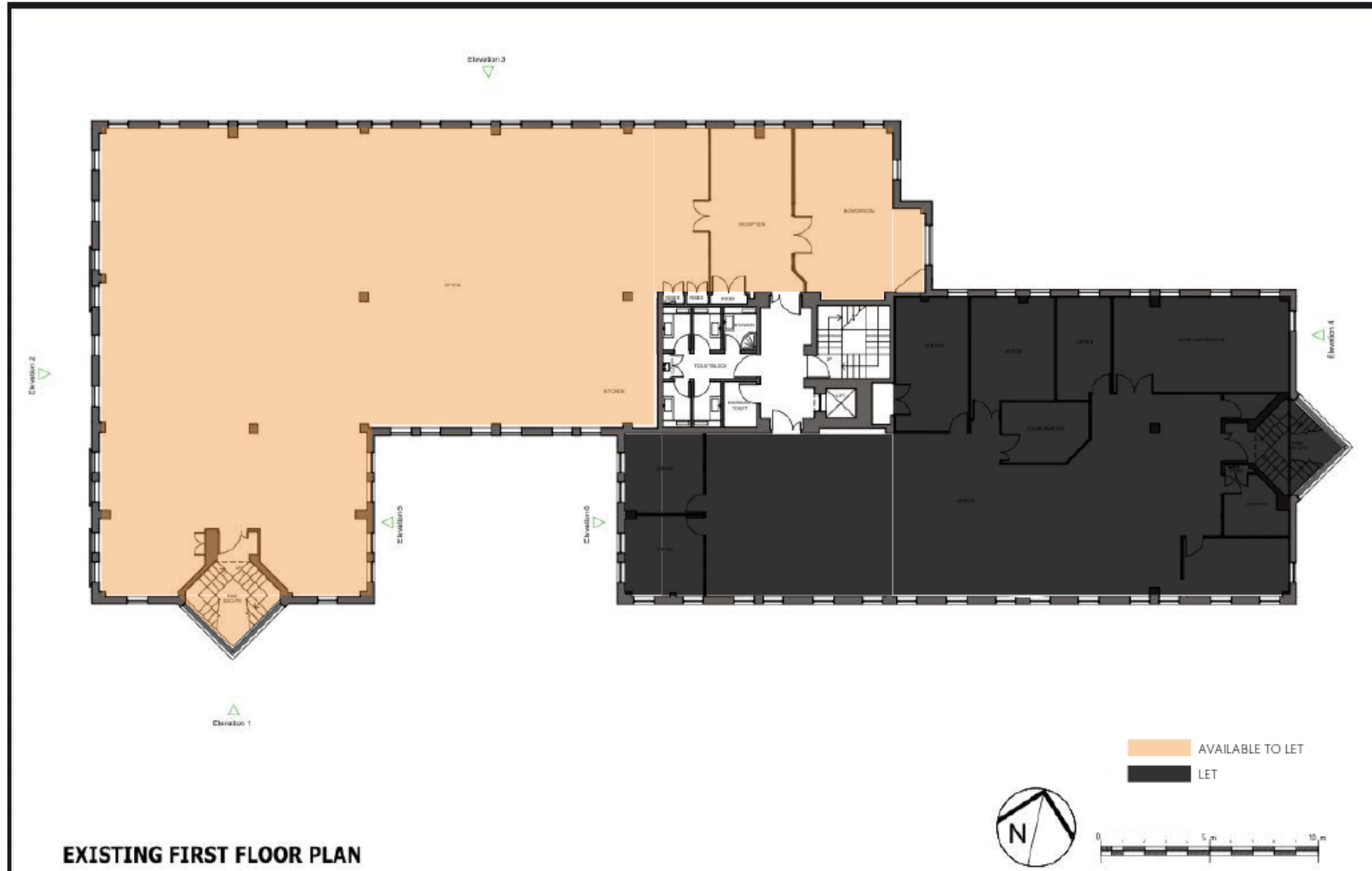
Trinity Court, Church Street, Rickmansworth, WD3 1RT



ACCOMMODATION

Sq ft Sq m

First Floor **5,656** **525.45**



AMENITIES

- ✓ Modern open-plan office space
- ✓ Air-conditioning
- ✓ W/C and shower facilities
- ✓ Parking available and cycle storage

LOCATION

Trinity Court is just a short walk from Rickmansworth Station which provides a fast and regular service to Central London via both underground (Met Line) and rail (Marylebone). Rickmansworth is a particularly attractive town with a wide range of amenities.

Rickmansworth is situated approximately 20 miles to the north west of Central London some 2 miles from Junctions 17 and 18 of the M25, benefitting from excellent access to the regional motorway network (M1, M40 and M4).

LEGAL COSTS

Each party to be responsible for their own legal costs.

DESCRIPTION

This attractive traditional office building offers first-floor office accommodation in an idyllic canal-side setting. The space comprises predominantly open-plan offices with a range of private office suites, boardrooms and conference rooms, providing a flexible working environment. The accommodation benefits from air conditioning, LED lighting and an abundance of natural light throughout, together with modern WC and shower facilities. Externally, the property offers parking with secure cycle storage.

TERM

A new lease to be granted for a term to be agreed, with appropriate rent reviews.

RENT

POA

SERVICE CHARGE

Ask agent

RATES

Rateable value 26/27: TBC

VAT

We understand that VAT is payable on the rent.

PERRY HOLT

PROPERTY CONSULTANTS
FIRST FLOOR OFFICES 165 -167 HIGH STREET
RICKMANSWORTH HERTS WD3 1AY

perryholt.co.uk

JOEL LOBATTO

DIRECTOR

07786 928311

01923 239080

joel@perryholt.co.uk

BEN HOWARD

DIRECTOR

07527 709064

01923 239080

ben@perryholt.co.uk