



EXPECT THE UNEXPECTED

CABOT CIRCUS
BRISTOL



**BRISTOL HAS WON
OVER VISITORS FOR
CENTURIES THANKS TO
ITS MAVERICK ATTITUDE
AND AN ATMOSPHERE
THAT'S BUZZING,
CREATIVE AND FRESH.
IT'S A PLACE WHERE THE
UNEXPECTED IS FOUND.**



**NAOMI WILKINSON, A
BRISTOL BASED ILLUSTRATOR,
WAS LET LOOSE TO ILLUSTRATE
EVERYTHING MORE THAN
JUST BALLOONS, BOATS AND
BRIDGES WITHIN BRISTOL.**



NAOMI WILKINSON

Illustrator & Storyteller
naomiwilkinson.co.uk
@naomipwilkinson



"Bristol is a wonderful place to be a creative as it's big enough to have a good mix of people and lots to explore but small enough that it feels like a community."



I'm an illustrator and I grew up in and around Bristol and now I live pretty centrally with my two kids, partner and lovely dog. I studied illustration here about nine years and have very gradually carved out a full time career as an illustrator. Bristol is also a lovely place to bring up kids as you benefit from city life and you're pretty close to the countryside too!



459,000
choose to live in Bristol



//
Bristol stands as a shining example of one of the UK's most forward-thinking, innovative and dynamic small cities.

COMMUNITY SPIRIT

VIBRANT CULTURE

DESIRABLE LOCATION

#1
best place to start a business

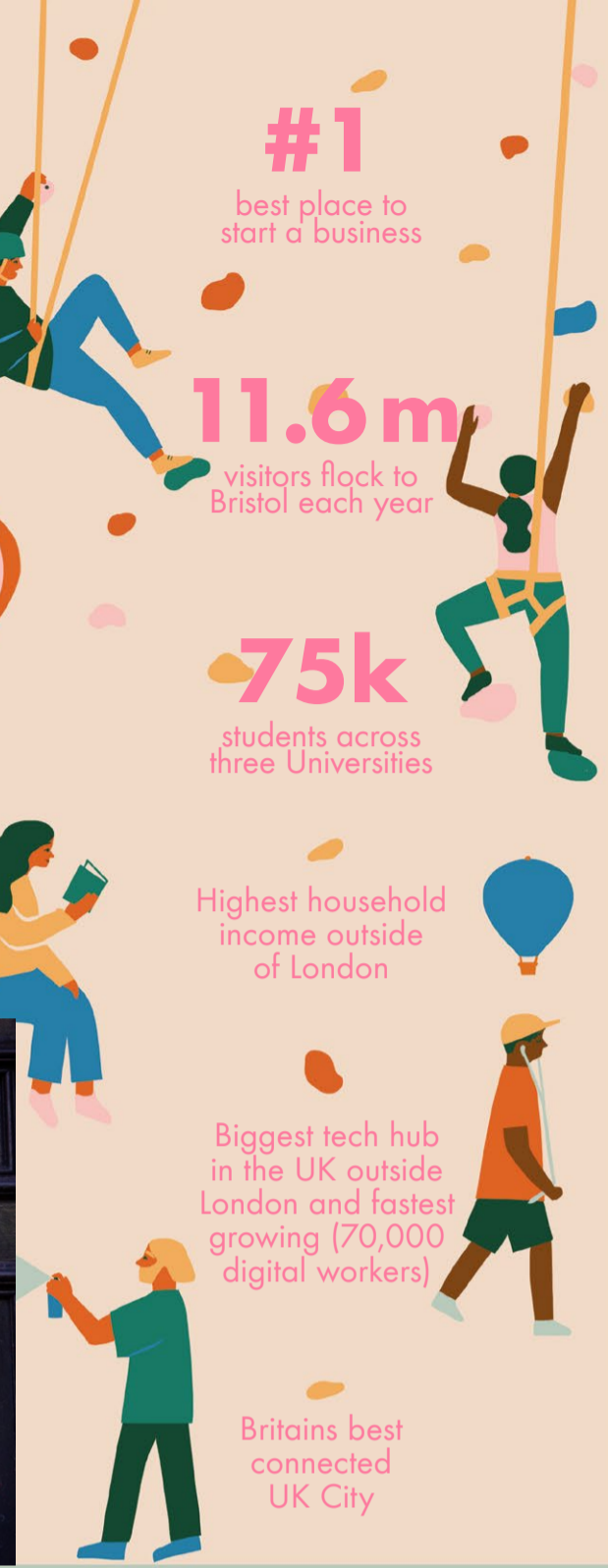
11.6m
visitors flock to Bristol each year

75k
students across three Universities

Highest household income outside of London

Biggest tech hub in the UK outside London and fastest growing (70,000 digital workers)

Britains best connected UK City



Q&A



FRAN HARKNESS
Founder of Bristol Arts Monster
bristolartsmonster.com
@bristolartsmonster

Fran is the founder of Bristol Arts Monster which gets Bristol families involved in the arts.

WHAT'S THE MOST SURPRISING THING ABOUT BRISTOL?

That there's so much to do! No matter what you're into, you'll find it in Bristol. In just one day you could see some art, explore ancient woods, spot some street art, paddleboard around the harbour, eat delicious food and see a live band. You can't get bored in Bristol.



Independent spirit



IF SOMEBODY WAS VISITING BRISTOL FOR THE FIRST TIME WHAT WOULD YOU RECOMMEND THEY SHOULD DO FIRST?

I live in Easton so I always recommend a visit to our local institution, Bristol Sweet Mart. It's packed full of every spice you could think of and vegetables you never knew existed. Don't leave without trying the Gujarati samosas from the amazing deli counter!

WHAT DO YOU LOVE ABOUT THE CITY?

I love that Bristol is such an independent yet collaborative city. It has a history of blazing a trail in the arts, communities, food and, of course, music. Bristolians seem to inspire each other and draw on each other's experiences, whilst striking out on their own to create something unique.

WHAT'S YOUR GO TO SHOP AT CABOT CIRCUS AND WHY?

As a family we can't go to Cabot without heading to Foyles bookshop. We sit and have a cup of tea while the kids play with the train set and read in the cosy children's corner. The staff are wonderful and always have great recommendations if you're not sure what to read next. We never leave empty handed!

WHERE DO YOU GO TO EAT IN CABOT CIRCUS AND WHY?

The kids are always amazed by the GIANT pizzas at L'Osteria. It's excellent value and makes for a great pit stop with a hungry family.



WHAT WAS THE LAST FILM YOU SAW AT THE SHOWCASE?

Getting to the cinema when you have small kids is nearly impossible, so I love the parent and baby screenings at the Showcase. These relaxed daytime screenings mean that new parents can see the latest movies without worrying about their noisy baby. I've seen some great films at these screenings, most memorably the wonderful Coen Brothers film, 'Hail, Caesar!'.

CABOT CIRCUS

KEY TENANTS

HARVEY NICHOLS ZARA

URBAN OUTFITTERS & other stories

BOSS HUGO BOSS Apple Bershka

COS L'OSTERIA PIZZA & PASTA CÔTE BRASSERIE

wagamama Nando's YD!

THE REAL GREEK SHOWCASE CINEMA DE LUX



AVERAGE SPEND AT CABOT CIRCUS

£70

fashion

£42

non-fashion

£25

click & collect

£26

catering



CREATIVE CAPTIVATING COURAGEOUS

Cabot Circus is a regional retail leader for UK and international fashion, bringing together high street, high end and aspirational brands, stylish dining and leisure.



109,000

sqm of retail, leisure & dining space



19 million

annual footfall

Retail Weeks
top 10 shopping
destination in the UK



LEASING CONTACTS

SOPHIE TOWNSEND
Retail
Hammerson

020 7887 1044
sophie.townsend@hammerson.com

CATHERINE WADE
Retail
Hammerson

020 7887 1835
catherine.wade@hammerson.com

JAMES HEELIS
JLL

020 7318 7821
james.heelis@eu.jll.com

CHARLES JACKS
Lunson Mitchenall

020 7478 4975
charlesj@lunson-mitchenall.co.uk

MIKE EGERTON
Restaurants & leisure
Hammerson

020 7887 1841
mike.egerton@hammerson.com

MILLIE WILSON
Bruce Gillingham Pollard

07799 882 850
millie@brucegillinghampollard.com

