



**CONWAYS  
COMMERCIAL**  
PROPERTY CONSULTANTS



[Redacted]

[Redacted]

[Redacted]

[Redacted]

[Redacted]



**CONWAYS  
COMMERCIAL**  
PROPERTY CONSULTANTS

Oxford House, Parkway Court, John Smith Drive,  
Oxford Business Park, Oxford OX4 2JY

Contact: Martin Conway

Tel: 01865 302610

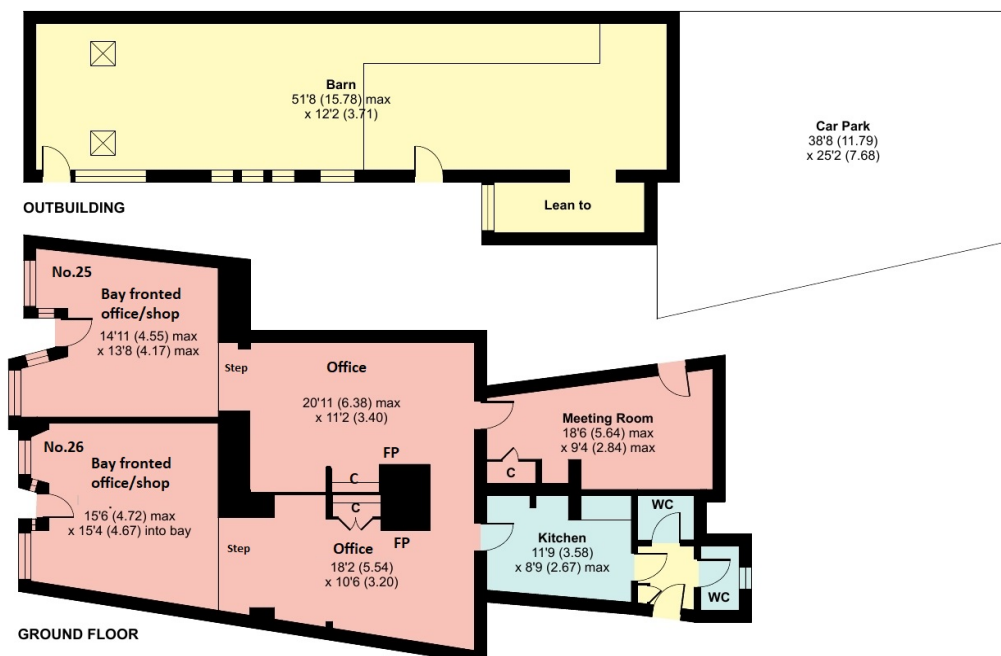
Email: martin@conwayscommercial.co.uk

[www.conwayscommercial.co.uk](http://www.conwayscommercial.co.uk)

## Wantage, Oxfordshire, OX12 8AE

Sales Office = 428 sq ft / 39.7 sq m  
Lettings Office = 448 sq ft / 41.6 sq m  
Meeting Room = 158 sq ft / 14.6 sq m  
Kitchen & WC's = 165 sq ft / 15.3 sq m  
Outbuilding = 692 sq ft / 64.2 sq m  
Total = 1891 sq ft / 175.6 sq m

For identification only - Not to scale



Floor plan produced in accordance with RICS Property Measurement Standards incorporating International Property Measurement Standards (IPMS2 Residential). © nchecom 2023. Produced for Douglas and Simmons Ltd. REF: 816580

Conways Commercial for itself and as agent for the vendor or lessor (as appropriate) gives notice that:

1. These particulars are only a general outline for the guidance of intending purchasers or lessees and do not constitute in whole or in part an offer or a Contract.
2. Reasonable endeavours have been made to ensure that the information given in these particulars is materially correct, but any intending purchaser or lessee should satisfy themselves by inspection, searches, enquiries, and survey as to the correctness of each statement.
3. All statements in these particulars are made without responsibility on the part of Conways Commercial or the vendor or lessor. No statement in these particulars is to be relied upon as a statement or representation of fact.
4. Neither Conways Commercial nor anyone in its employment or acting on its behalf has authority to make any representation or warranty in relation to this property.
5. Amounts quoted are exclusive of VAT if applicable. Interested parties should take independent advice as to the VAT position of this property.
6. Any areas, measurements or distances are only approximate and are given without responsibility.

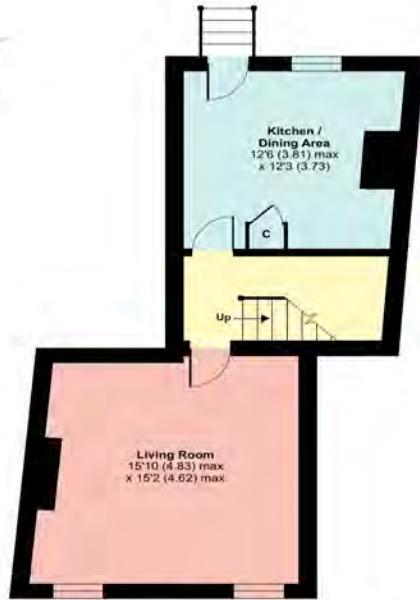
SUBJECT TO CONTRACT

DATE:



**Market Place, Wantage, OX12 8AE**

Approximate Area = 904 sq ft / 84 sq m  
For identification only - Not to scale



FIRST FLOOR



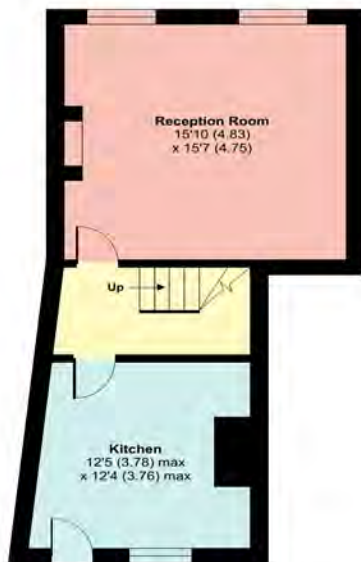
SECOND FLOOR



Floor plan produced in accordance with RICS Property Measurement Standards incorporating International Property Measurement Standards (IPMS2 Residential). © rics.com 2022. Produced for Douglas and Simmons Ltd. REF: 317477

**Market Place, Wantage, OX12 8AE**

Approximate Area = 940 sq ft / 87.3 sq m  
For identification only - Not to scale



GROUND FLOOR



FIRST FLOOR

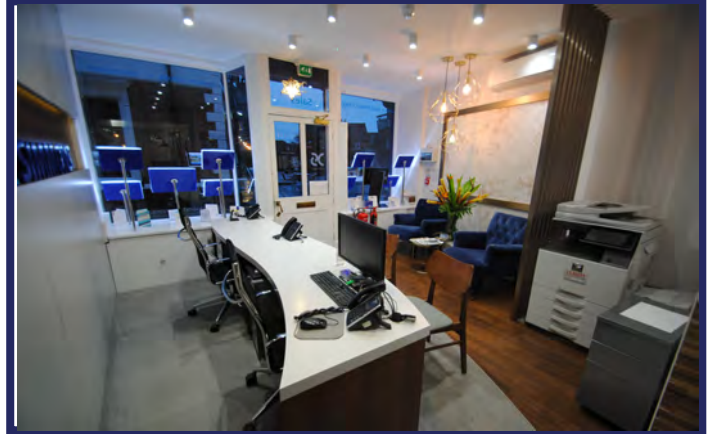
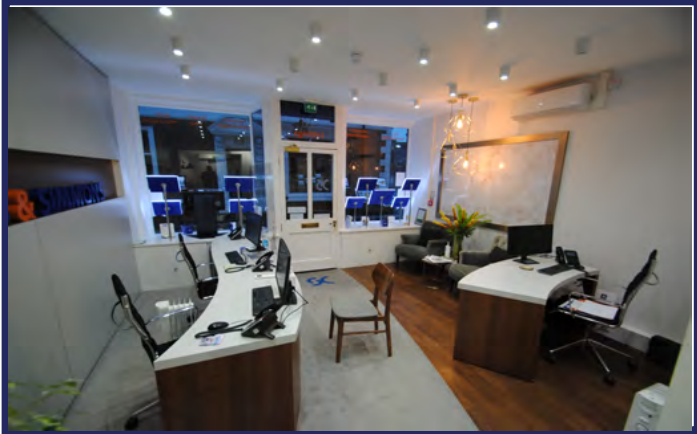


Floor plan produced in accordance with RICS Property Measurement Standards incorporating International Property Measurement Standards (IPMS2 Residential). © rics.com 2021. Produced for Douglas and Simmons Ltd. REF: 93557



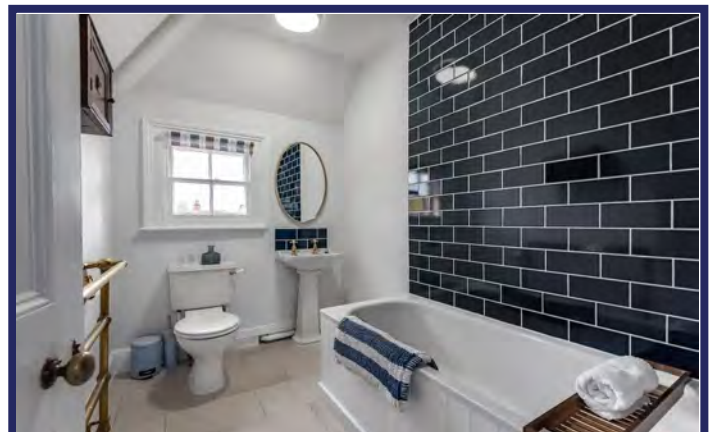
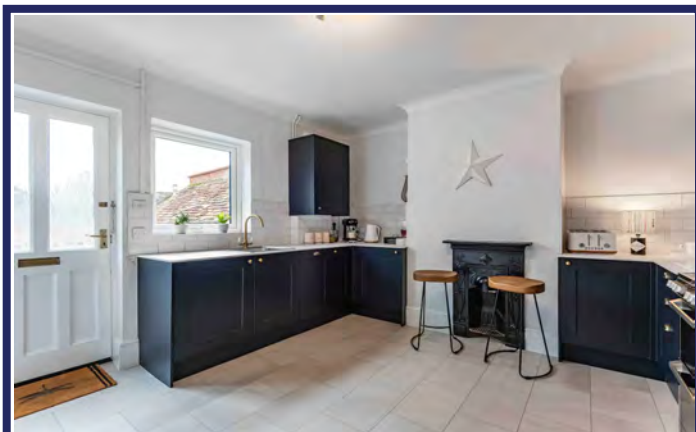


**CONWAYS  
COMMERCIAL**  
PROPERTY CONSULTANTS





**CONWAYS  
COMMERCIAL**  
PROPERTY CONSULTANTS







**CONWAYS  
COMMERCIAL**  
PROPERTY CONSULTANTS

