

# Illuminating Workspace



LUMINA

Ainslie Road Hillington Glasgow G52 4RU

# Welcome to Lumina



**4,431 – 22,668 sq ft**  
**of modern office space**



**22,668**

Square feet of flexible workspace  
across three floors

**112**

Car parking spaces including  
disabled/visitor

**10 mins**

To Glasgow city centre by train

**10 mins**

Walk to Hillington East rail station

**03 miles**

To Glasgow International Airport

**10**

Eat-in/take-out food options plus lots  
of other essential services on the park

**1.2m**

Greater Glasgow population  
– 5<sup>th</sup> largest urban area in the UK

**500+**

Businesses established at Hillington  
Park employing over 8,000 people

# Arrive your way

The local transport infrastructure provides many travel to work options for Lumina. These offer regular public transport services for commuters to Hillington Park and alternatives to single occupant car journeys that can help to reduce road congestion.



## Glasgow Airport

7 min drive



## M8 J5

2 min drive



## Hillington West

14 min walk

## Hillington East

10 min walk



## Cycle

Multiple Cycle Routes



## Bus

Multiple Bus Routes



## Walk

Paved Footpaths throughout the Park



## By Air

**03** Miles to Glasgow International Airport

**45** Miles to Edinburgh International Airport

## By Bus

**05** Bus routes serving Lumina

**15** Minutes between buses at peak times

## By Foot

**30** Minutes walk to Renfrew town centre & Queen Elizabeth Hospital

**05** Kilometres perimeter jogging route around the park

## By Bike

**7 & 75**

National Cycle Routes which are both accessible from the park

**07** Covered bike spaces available at Lumina

## By Car

**112** Car parking spaces at Lumina

**03** Electric car charging points

**07** Miles to Glasgow city centre by car

## By Train

**10** Minutes to Glasgow city centre by train

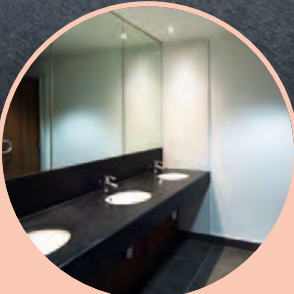
**04** Minutes to Paisley by train

**02** Train stations within a 15 minute walk

# Illuminating



Indicative finishes



# workspace



Campus setting with The Innovation Centre in mature landscaped environment



Open plan floor plates capable of sub-division



13 person passenger lift & two stairwells



Male, female and disabled toilet facilities on each floor



Shower facilities on each floor



3 pipe VRV heating and cooling system with separate controls on each floor



Energy-efficient lighting controls



Suspended metal tiled ceiling with LED light fittings



Metal raised access floor with powered floor boxes

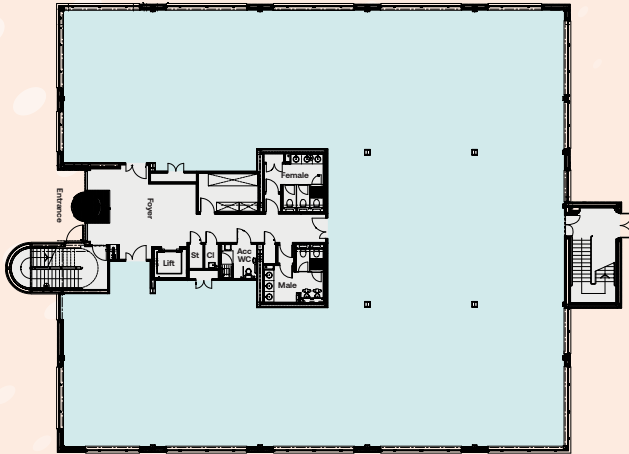


2.7m floor to ceiling height

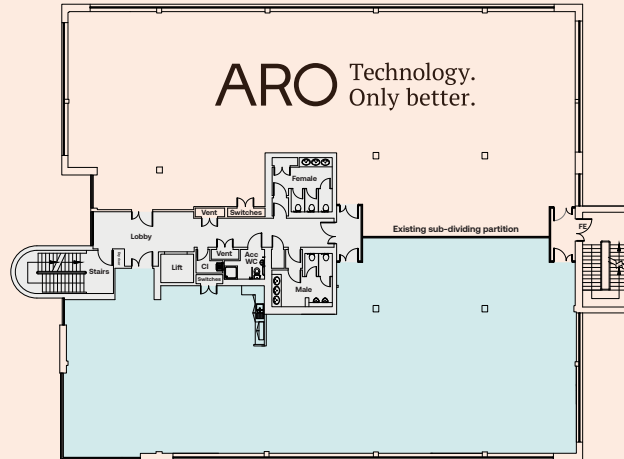
Floor	Sq Ft	Status
2 <sup>nd</sup>	9,281	Available
1 <sup>st</sup> – North	4,684	Let
1 <sup>st</sup> – South	4,431	Available
G	8,956	Available
<b>Total</b>	<b>27,352</b>	

# Floor plans

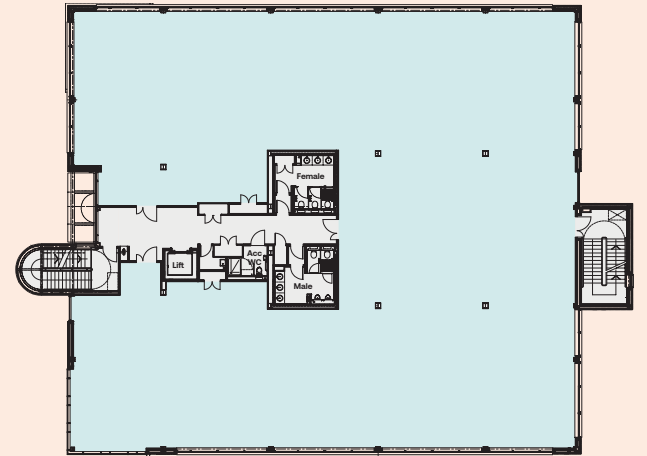
**Ground**  
8,956 sq ft



**First**  
4,431 sq ft



**Typical Upper Floor**  
9,281 sq ft

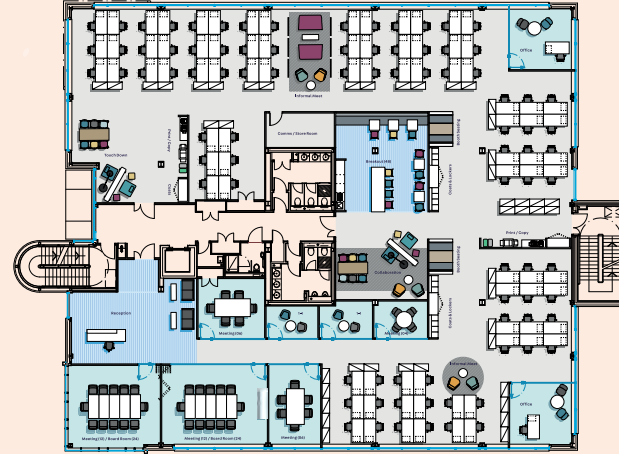


## Typical Upper Floor

### 9,281 sq ft

#### Layout includes:

- 88 Open-plan workstations
- 2 Director offices
- Reception
- 2 Large Meeting Rooms (10+)
- 2 Mid-size Meeting Rooms (4-6)
- 3 Small Meeting Rooms (2-4)
- Kitchen/Breakout
- Collaboration/Informal Meet Areas
- Touchdown/Informal Work Area
- 2 x Print/Copy
- Comms/Store Room
- Coats/Lockers



## Ground

### 8,956 sq ft

#### Layout includes:

- 104 Open-plan workstations
- Training Room
- 4 Small Meeting Rooms (2-4)
- 5 Private Phone Booths
- Kitchen/Breakout
- Collaboration/Informal Meet Areas
- Touchdown/Informal Work Area
- 2 x Print/Copy
- Comms/Store Room
- Coats/Lockers



# Space plans

# On the doorstep

LUMINA



100+ shops  
20+ restaurants  
3 mins drive



5 minute walk



*Big Licks*

**COSTA**

**KFC**

Eat-in and take-out food options, essential services and fitness offerings all on Hillington Park.



Campus  
Coffee Shop



Commando X-Fit  
10 minute walk



On-site estate  
team providing  
24/7 CCTV

**ODEON**  
FANATICAL ABOUT FILM



**LUSH**



Sainsbury's

M&S

PRIMARK



**FIVE GUYS**  
BURGERS and FRIES

**XSITE**

**H&M**

**farmfoods**  
THE FROZEN FOOD SPECIALISTS



**Harvester**



**SUBWAY**



**Little Stars**  
nursery



**GREGGS**

**BAYNE'S**  
THE FAMILY BAKERS



LUMINA

Ainslie Road Hillington Glasgow G52 4RU



**Alistair Reid**  
alistair.reid@jll.com  
+44 (0)7711 054 848

**Hanna McKie**  
hanna.mckie@jll.com  
+44 (0)7933 514 376



**Andy Cunningham**  
andy@mc2-offices.com  
+44 (0)7793 808 490

**Colin MacKenzie**  
colin@mc2-offices.com  
+44 (0)7912 805 890

MC2 gives notice that these particulars are set out as a general outline only for the guidance of intending Purchasers or Lessees and do not constitute any part of an offer or missives. Details are given without any responsibility and any intending Purchasers, Lessees or Third Party should not rely on them as statements or representations of fact, but must satisfy themselves by inspection or otherwise as to the correctness of each of them. No person employed or engaged by MC2 has any authority to make any representation or warranty whatsoever in relation to this property. MC2 is the licensed trading name of MC2 (Glasgow) Ltd. Company registered in Scotland no SC704375. Registered office: 102 Hope Street, Glasgow, G2 6PH. Generated September 2025.