

**fisher  
german**

# 20 Ironmonger Lane

London EC2V 8EP

Leasehold |  
Fully Fitted Offices

1,022 Sq.ft (95 Sq.m)



**To Let** | £60.00 (per sq ft pa excl)





## Key information



### Rent

£60.00 (per sq ft  
pa excl)



### Service charge

£14.75 (per sq ft (ye  
April 2026)



### Rates payable

£19.49 (per sq ft (ye  
April 2026)



### EPC rating

B

## 20 Ironmonger Lane

1,022 Sq.ft (95 Sq.m)

### Location

Ironmonger Lane is a particularly tranquil street that lies between Cheapside and Gresham Street, located in the heart of the City of London, a stone's throw away from The Bank of England. Bank Underground Station (Central, Northern, DLR, Waterloo & City and the Circle and District Lines) is less than 300 metres away. Other stations including St Paul's, Cannon Street, Moorgate and Liverpool Street (including the Elizabeth Line) are also close by.

### Description

The available part fourth floor has been newly refurbished by the landlord to a high standard, offering a CAT A+ solution. Fully managed services are also available through Workpad.

## Amenities



Bike  
Storage



Shower  
Facilities



New  
Reception



Comfort  
Cooling



Passenger  
Lift



Excellent  
Transport  
Links

## Accommodation

The approximate Net Internal Areas comprise:

Floor	Sq.ft	Sq.m
Part Fourth Floor - CAT A+	1,022	95
<b>Total</b>	<b>1,022</b>	<b>95</b>





## Further information

### Quoting Rent

£60.00 per sq ft pa excl

### Lease Terms

New flexible lease available direct from the Landlord, or available on flexible all-inclusive managed terms through Workpad.

### Service Charge

The current on account service charge is £14.75 psf excl.

### Business Rates

Estimated at £19.49 per sq ft pa for the rating year April 2025 to April 2026. All parties are advised to make their own enquiries with the rating authority.

### EPC

The EPC rating is B.

### Legal Costs

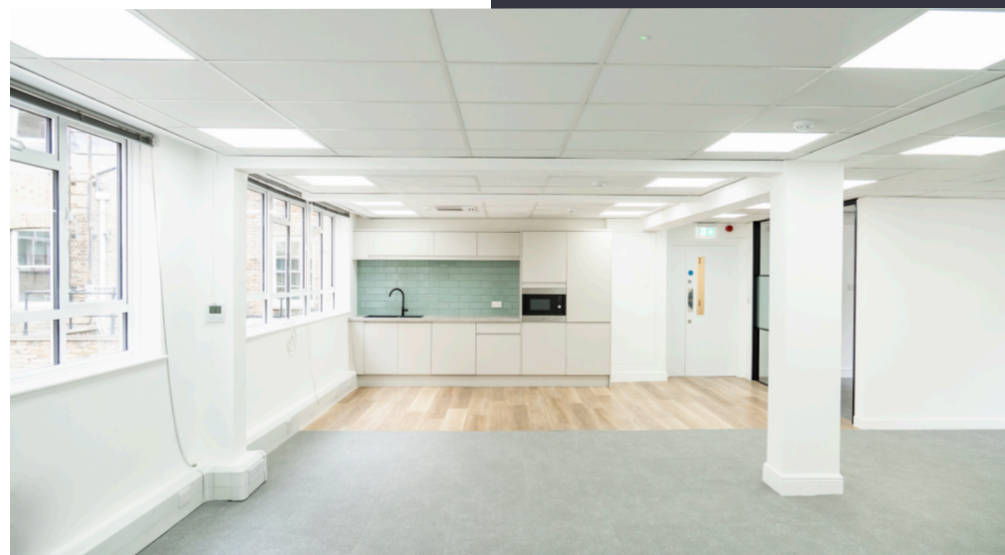
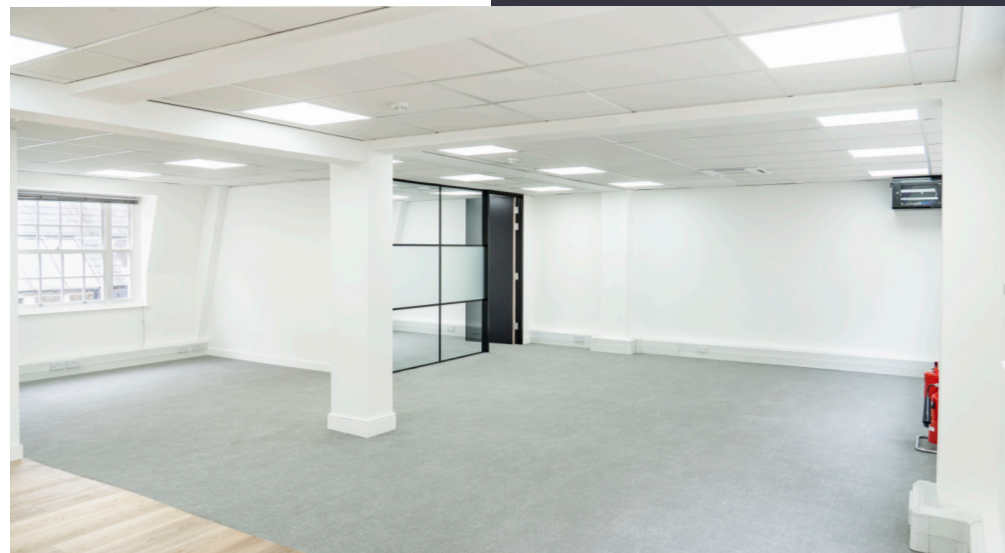
Each party to be responsible for their own legal costs incurred in this transaction.

### VAT

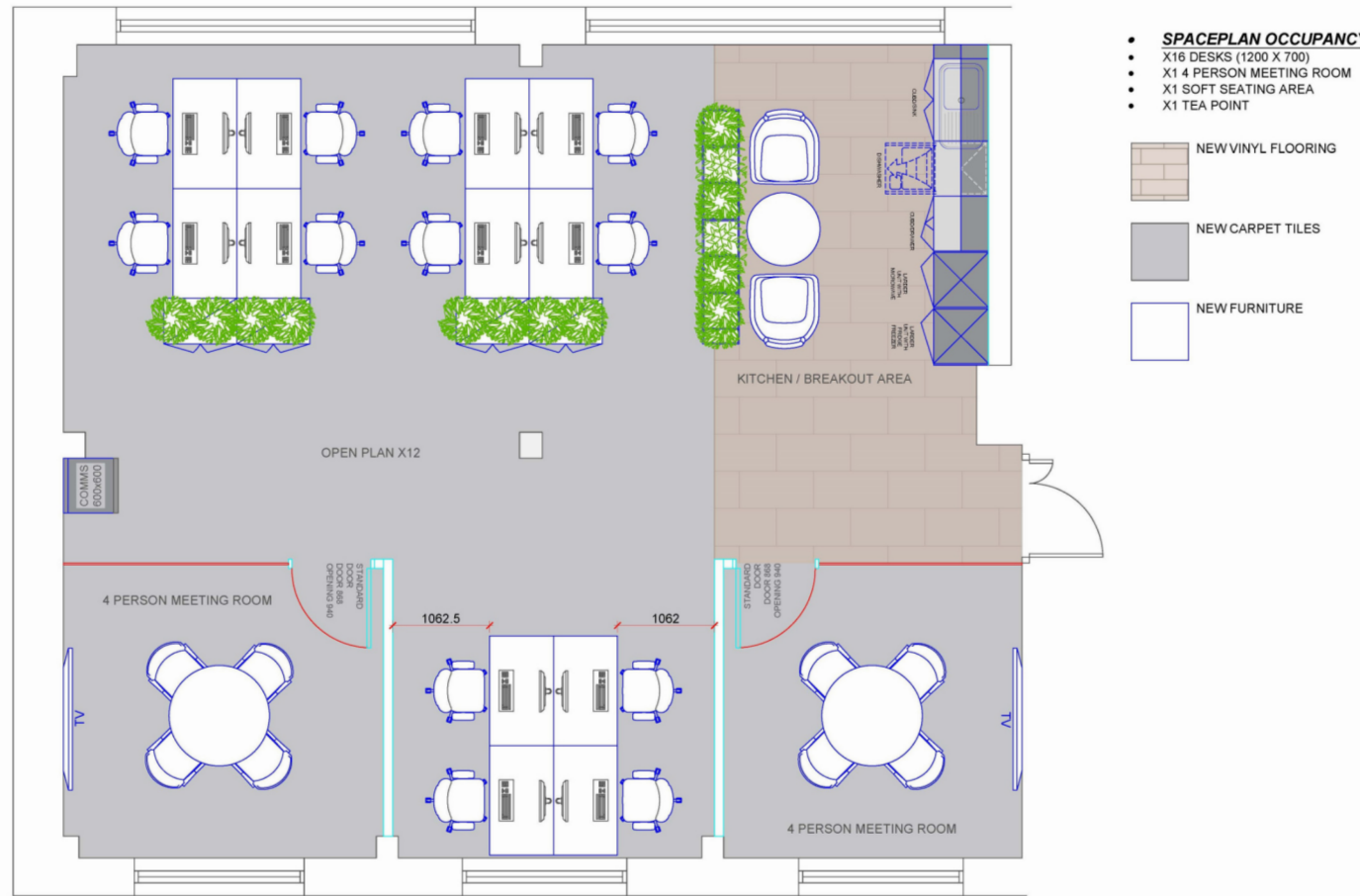
The property is elected to VAT which is therefore payable on rent and service charge.

### Viewings

Strictly by prior arrangement through joint sole agents Fisher German LLP and Allsop LLP.

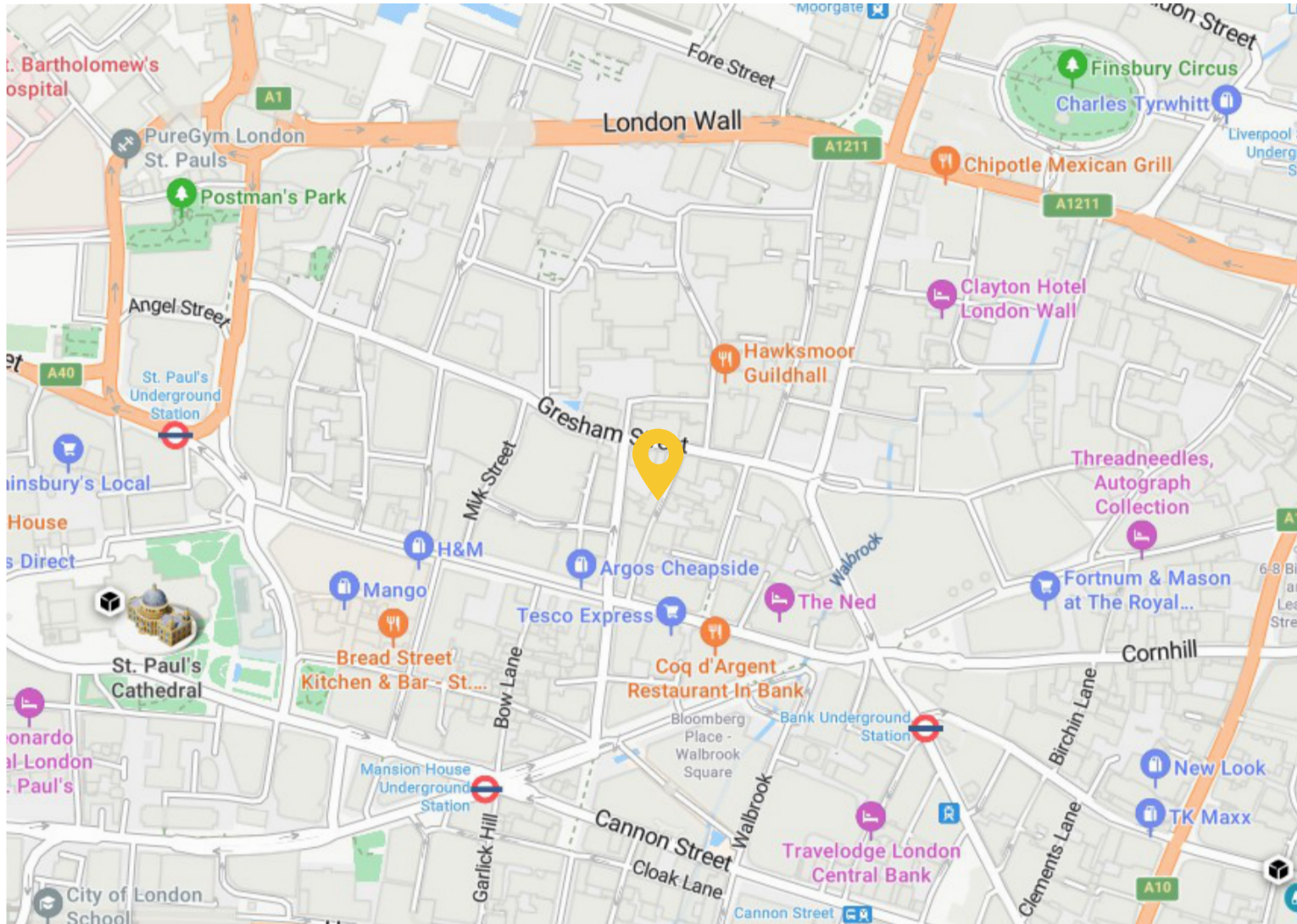


## Floorplan



Part Fourth Floor - CAT A+

## Location Map



© 2025 Microsoft, © 2025 TomTom, © 2025 OpenStreetMap

### Location

Address: 20 Ironmonger Lane,  
London EC2V 8EP

What3words: ///head.soft.pulse

### Nearest Stations

Bank Tube Station: 3 min walk  
Cannon Street Station: 7 min walk  
St Paul's Tube Station: 7 min walk  
Moorgate Station: 7 min walk  
Liverpool Street Station: 14 min walk

## Contact us



**Doug Gordon**

0207 747 3117

doug.gordon@fishergerman.co.uk



**Jessie High**

0207 747 3142

jessie.high@fishergerman.co.uk



Or our joint agents: Allsop LLP

07917 918 124

Please note: Fisher German LLP and its Joint Agents give notice that: 1. They have no authority to make or give any representation or warranty on any property whether on their own behalf or on behalf of their clients or otherwise. 2. They do not owe any duty of care to you and assume no responsibility for any statements, representations, warranties or otherwise made in the particulars and you should not rely on those in the particulars. 3. The particulars are produced in good faith are set out as a general guide only and do not constitute or form an offer or a contract or part thereof. 4. Any photographs, descriptions, plans, measurements, distances and any other details in the particulars are approximate estimates only taken as the property appeared at the time and should not be relied upon as factually accurate. 5. Fisher German assumes prospective purchasers/tenants have carried out inspections to satisfy themselves that the information in the particulars is correct.

Particulars dated October 2025. Photographs dated April 2025.



This brochure is fully recyclable

fishergerman.co.uk