



923 - 988 SQ FT OF STYLISH,  
FULLY FITTED AND FURNISHED  
OFFICE SPACE

184-186 REGENT ST

184-186  
REGENT ST



01

ABOUT

# AN ADDRESS THAT NEEDS NO INTRODUCTION

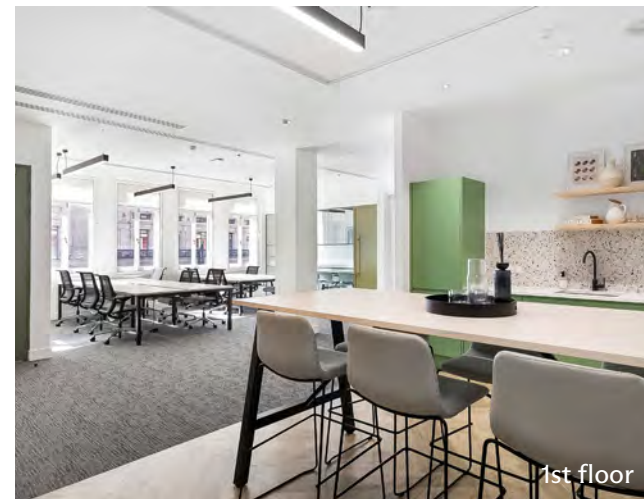
A blend of heritage charm and contemporary workspace on one of London's most well-known streets. Fully upgraded and thoughtfully fitted, the building provides stylish, self-contained floors that allow businesses to move in and thrive from day one.

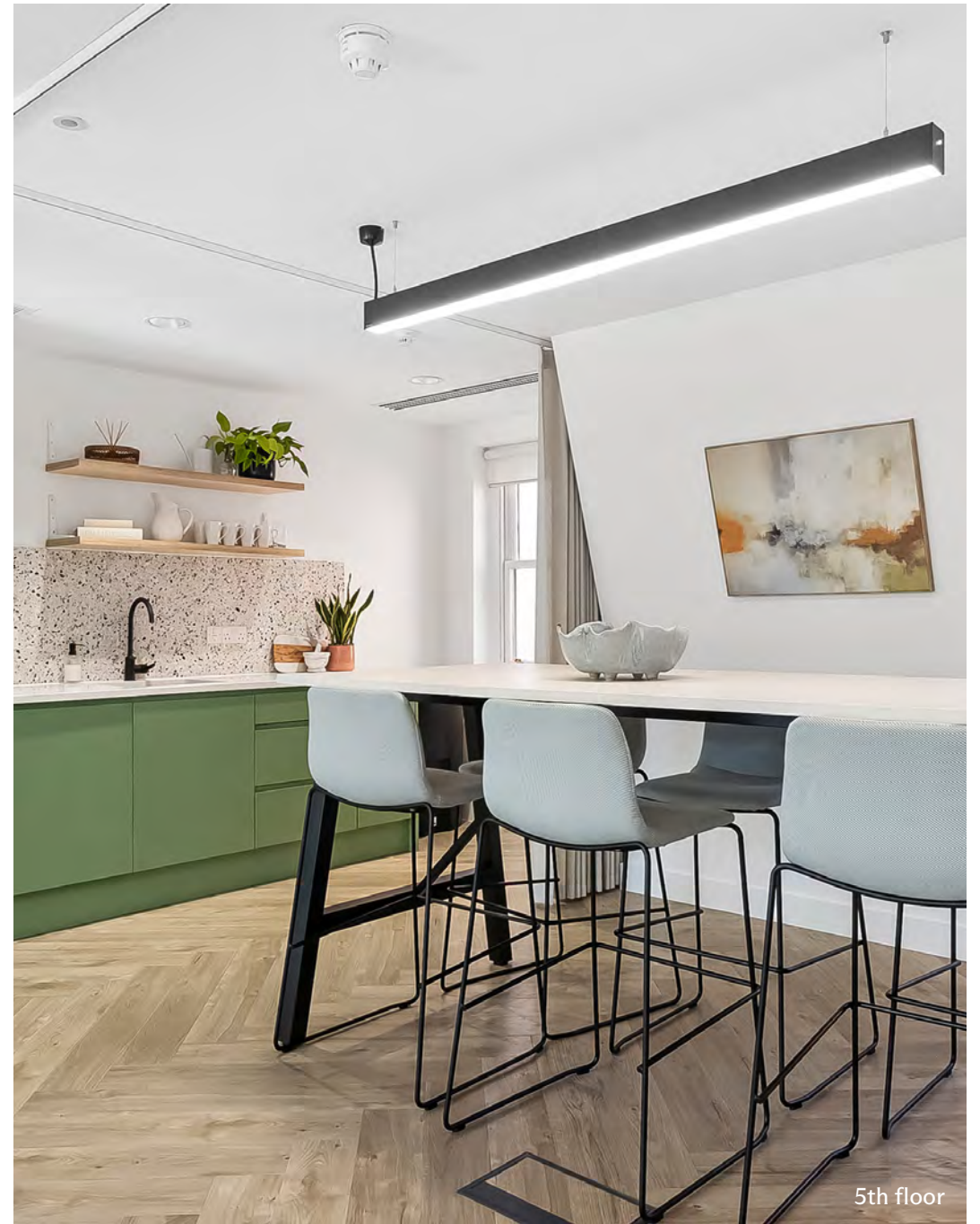
184-186  
REGENT ST

# TO THE HIGHEST OF STANDARDS



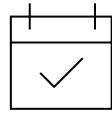
Fully refurbished, each of the 1st and 5th floors offer an open-plan workspace, a private meeting room, breakout area, kitchenette and access to showers.



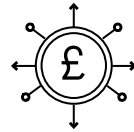


184-186  
REGENT ST

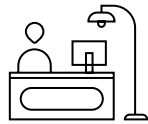
# KEY FEATURES



FLEXIBLE  
LEASE TERMS



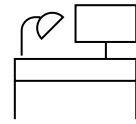
ALL-INCLUSIVE  
SINGLE QUARTERLY  
PAYMENT



MANAGED  
WORKSPACE  
SOLUTION



FULLY UPGRADED  
OFFICES



FULLY FITTED AND  
FURNISHED INDIVIDUAL  
OFFICE FLOORS



FULL FIBRE  
CONNECTIVITY



SHOWER  
FACILITIES

WORKPLACES+

## ACCESS TO EXCLUSIVE BUSINESS AMENITIES - ONLY 5 MINUTES WALK AWAY



As a 184 Regent Street customer, you have access to our Community Hub at One Heddon Street, which includes exclusive discounts on meeting rooms, event space and roof terrace hire, as well as access to the members lounge, events and wellbeing programmes, plus personal offers and perks.



ACCESS TO  
FITNESS AND  
WELLBEING  
CLASSES



EXCLUSIVE  
DISCOUNTS  
FOR BOOKABLE  
MEETING ROOMS



24/7  
SECURITY AND  
MAINTENANCE  
SUPPORT



BESPOKE PERKS  
AND DISCOUNTS  
AROUND THE  
PORTFOLIO

184-186  
REGENT ST

# THE NEIGHBOURHOOD



## RESTAURANTS

- 01 Bob Bob Ricard
- 02 Café Murano
- 03 Dishoom
- 04 NOPI
- 05 Cecconi's Mayfair
- 06 Flat Iron
- 07 Brasserie Zedel
- 08 Fallow
- 09 Sketch
- 10 Bancone

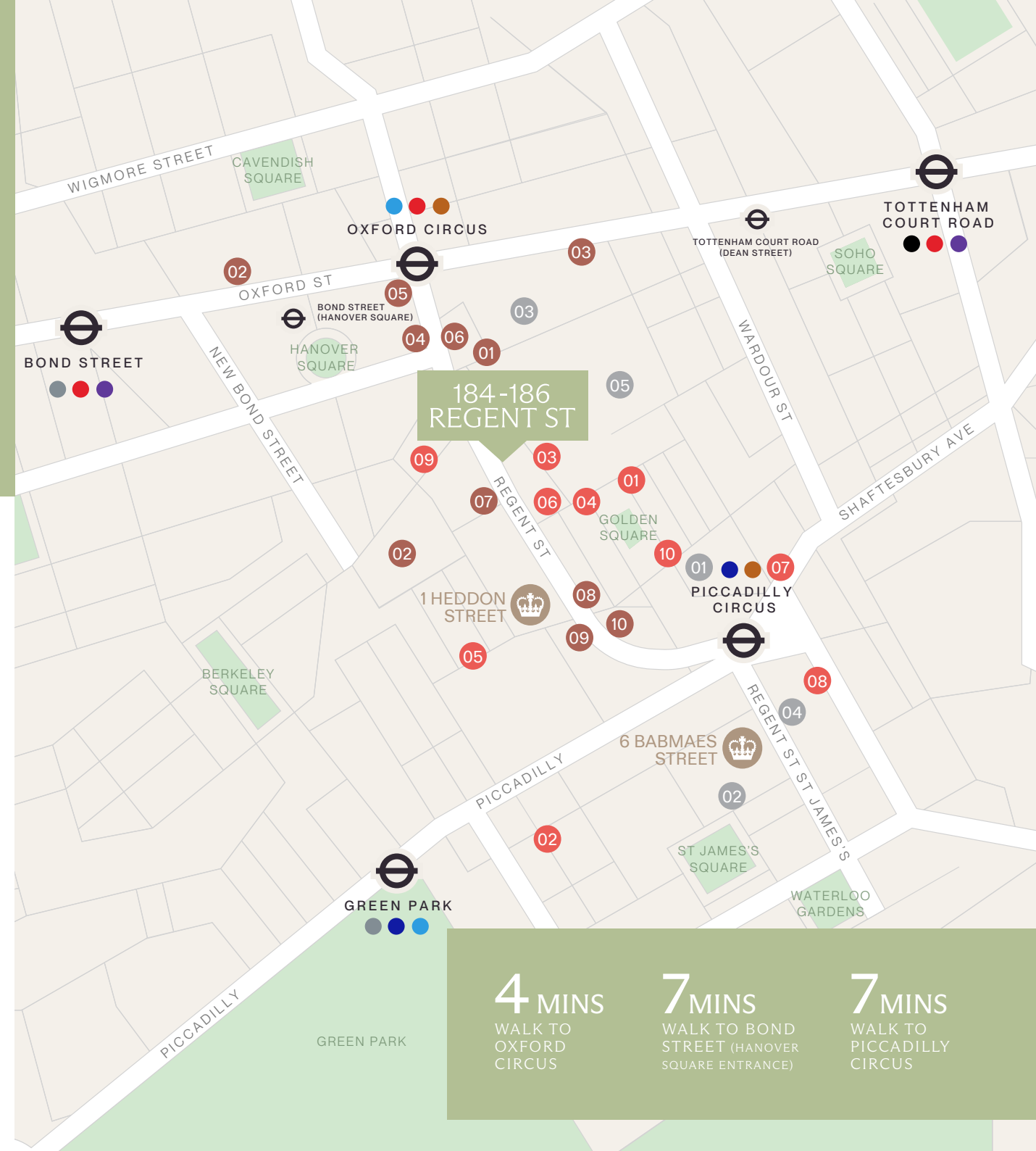
## RETAIL

- 01 Liberty London
- 02 John Lewis
- 03 M&S
- 04 Apple
- 05 Nike
- 06 H&M
- 07 Gymshark
- 08 Zara
- 09 Uniqlo
- 10 Mulberry

05

## LEISURE / WELLBEING

- 01 Third Space
- 02 Nordic Balance
- 03 Fitness First
- 04 PureGym
- 05 Topnotch Gyms Soho



**4 MINS**  
WALK TO  
OXFORD  
CIRCUS

**7 MINS**  
WALK TO BOND  
STREET (HANOVER  
SQUARE ENTRANCE)

**7 MINS**  
WALK TO  
PICCADILLY  
CIRCUS

184-186  
REGENT ST

# AVAILABILITY



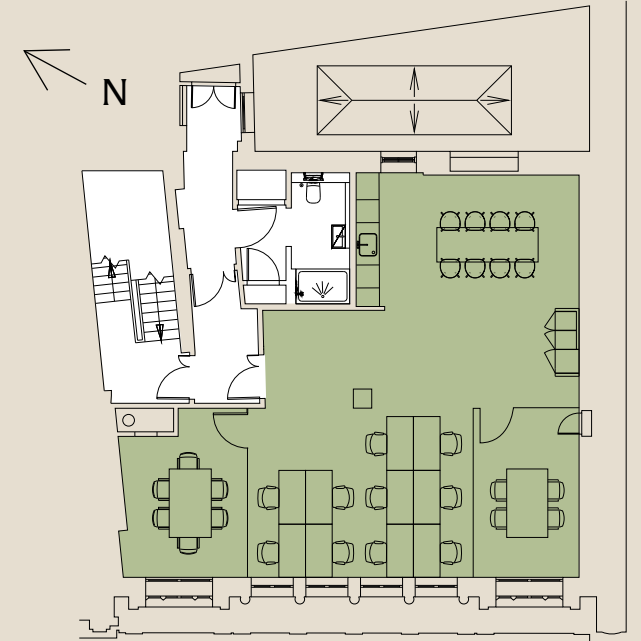
1st floor

FLOOR	SQ FT	SQ M	DESKS	£ PCM
5TH	923	85	10	11,922
1ST	988	91	10	12,761.66

## 1ST FLOOR

988 SQ FT

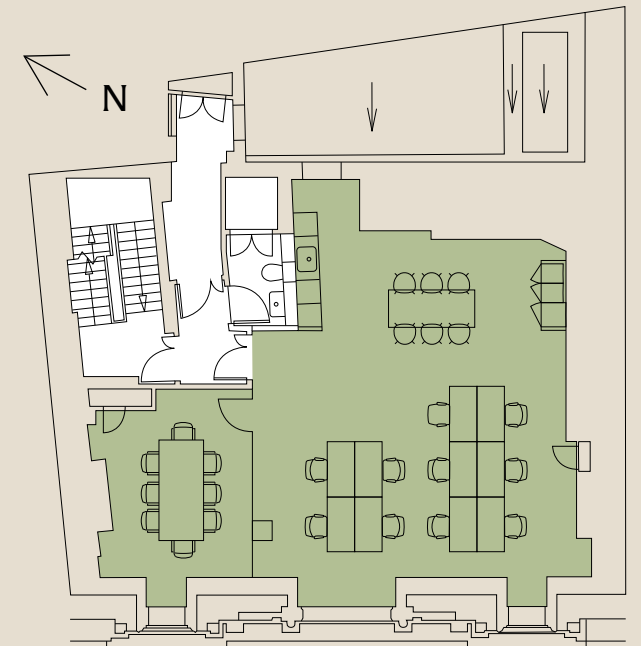
- OFFICE
- CORE



## 5TH FLOOR

923 SQ FT

- OFFICE
- CORE



# ALL ENQUIRIES



## KONTOR

Ben Orchard-Smith  
07557 988 115  
ben@kontor.com

Sam Davis  
07403 226 453  
sam.davis@kontor.com

Workplaces | 

Alka Jotangia  
07826 946 336  
alka.jotangia@thecrownestate.co.uk

George Walker  
07783 770 849  
george.walker@thecrownestate.co.uk

Misrepresentation Act 1967 and declaration. Kontor for themselves and for the vendor/lessor as agents for the vendor/lessor gives notice that: 1. We provide the information contained in these particulars for guidance to intending purchasers, licensees or any other third parties and they are for your general information only and will be used at your own risk. 2. We will use all reasonable endeavours to ensure the accuracy of information, however, we do not guarantee or warrant the accuracy or completeness, factual correctness or reliability of any information in the particulars (especially as the information may have been obtained from third parties) and do not accept any liability for any errors or omission including any inaccuracies or typographical errors. 3. Any interested purchasers, licensees or any other third parties should not view the information in the particulars as statements or representations of fact and should satisfy themselves that the facts and specific details in the particulars are correct and accurate especially in relation to floor areas and other measurements through inspection. May 2026  
Designed by: K4 Creative | k4creative.com