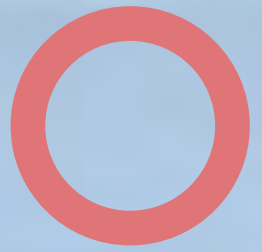




## QUARTERMILE ONE

15 LAURISTON PLACE  
EDINBURGH EH3 9EP



8,000 - 20,987 SQ FT  
FULLY REFURBISHED, GRADE A OFFICE SPACE  
UNRIVALLED VIEWS OF EDINBURGH  
ONLY ONE FLOOR REMAINING

# QUARTERMILE ONE OVERVIEW



# WELCOME TO QUARTERMILE ONE

Quartermile One is a striking glass and steel Foster + Partners designed office building in the award winning Quartermile development.

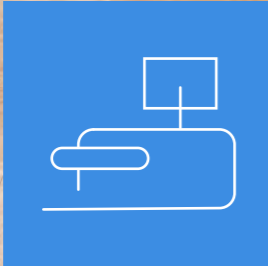
- Set within 7 acres of green space in a fantastic mix of new build and restored period buildings, overlooking the Meadows and with views over Edinburgh city centre.

- The last available floor has been comprehensively refurbished to provide state of the art, sustainable office space, with new finishes throughout, in keeping with the building's overall quality.

- Outstanding office, residential, retail and leisure facilities offering a true 'mixed use' environment in which to work, stay and play.

- New 'end of journey' facilities at basement level with lockers, shower facilities, drying room, secure bike storage and parking for up to 20 cars.





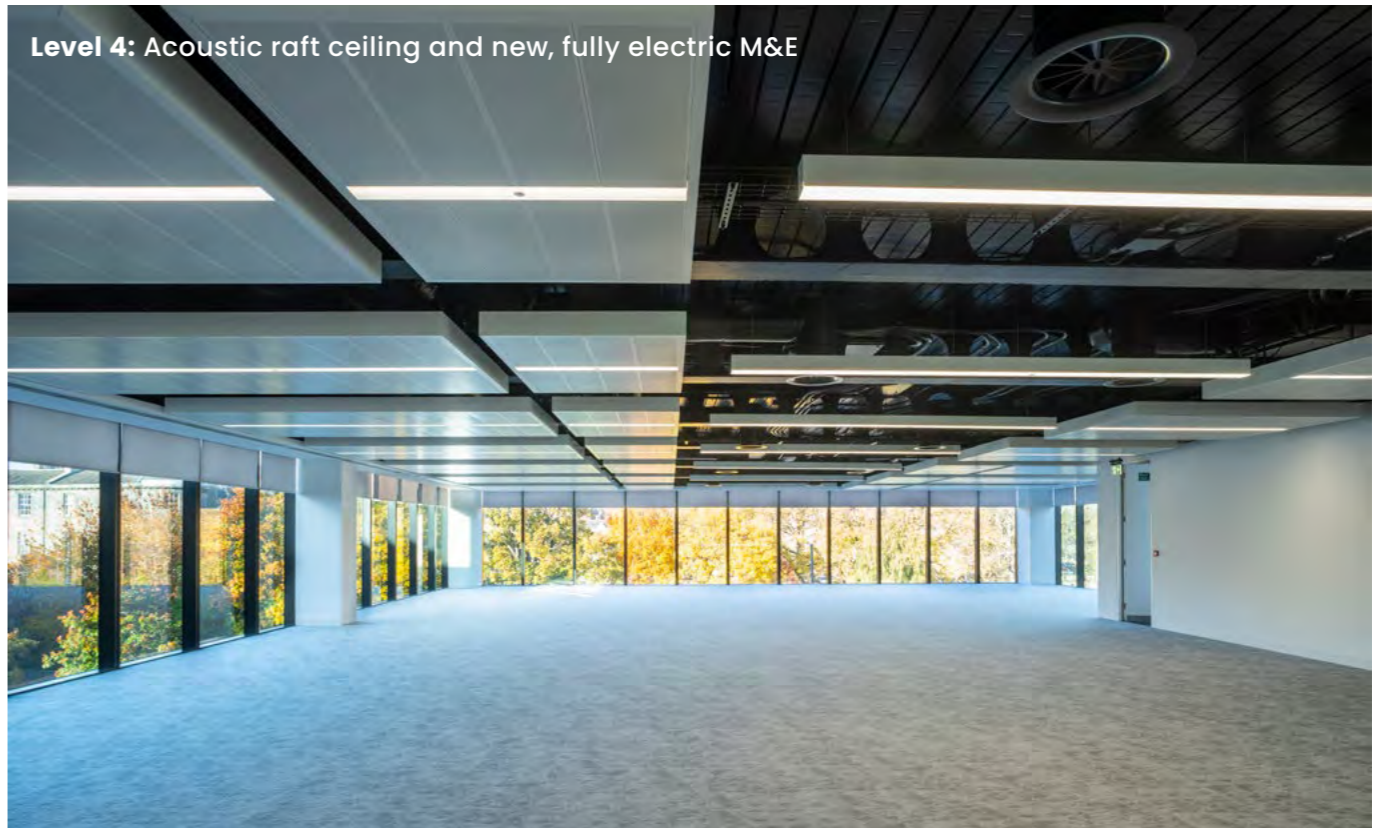
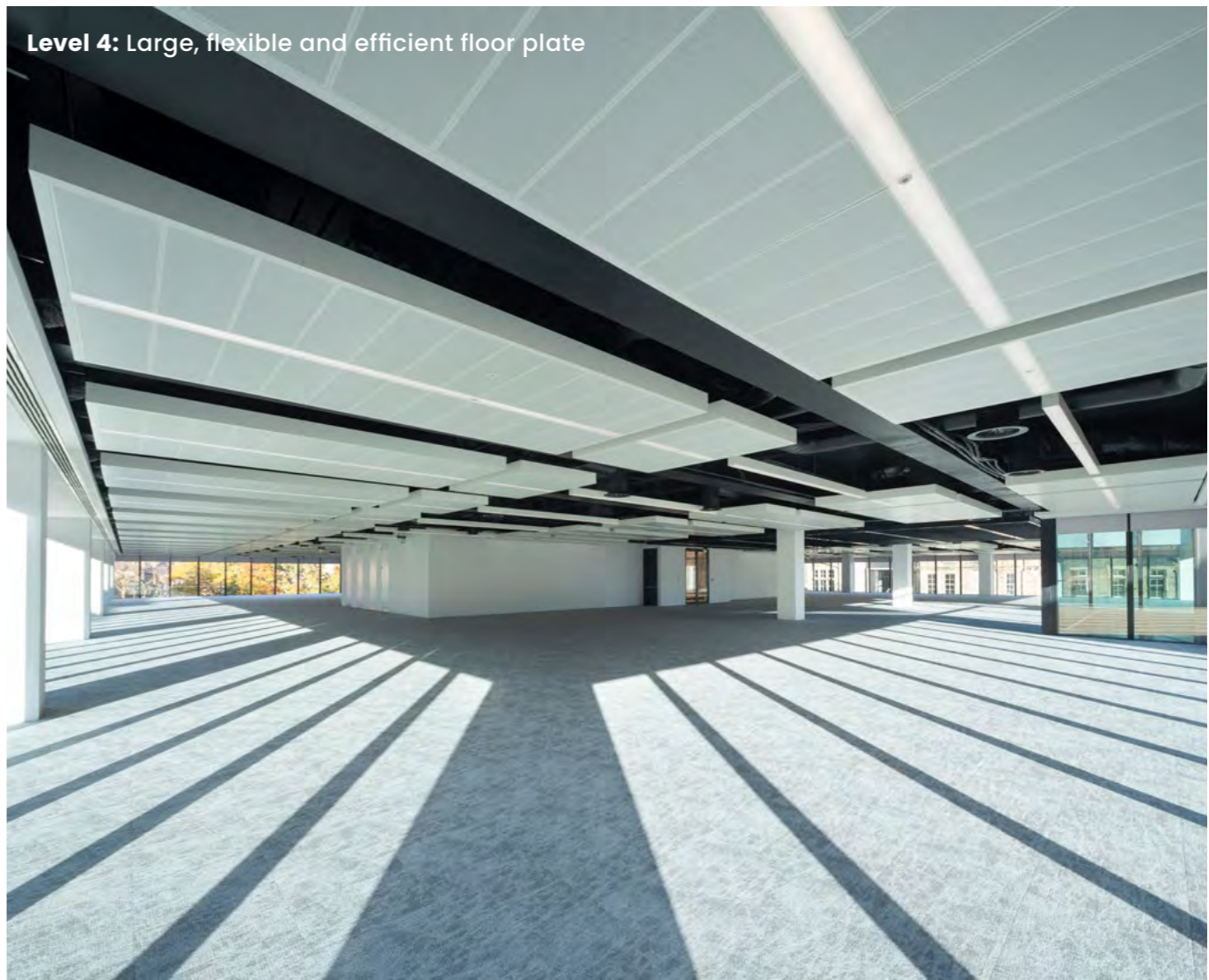
Refurbished north reception

With north and south receptions Quatermile One makes a stunning visual impact on arrival.



Quatermile One has one available floor which has undergone major refurbishment to provide state of the art, sustainable office space. The new finishes are exceptional and in keeping with the overall quality of the building.

Level 4: Large, flexible and efficient floor plate



Level 4: Acoustic raft ceiling and new, fully electric M&E

## A WARM RECEPTION

The recently refurbished south reception of Quatermile One provides access directly from and to the central area of the Quatermile estate.

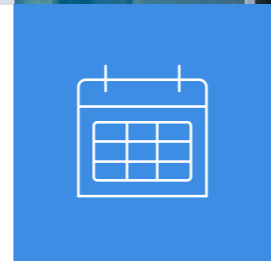
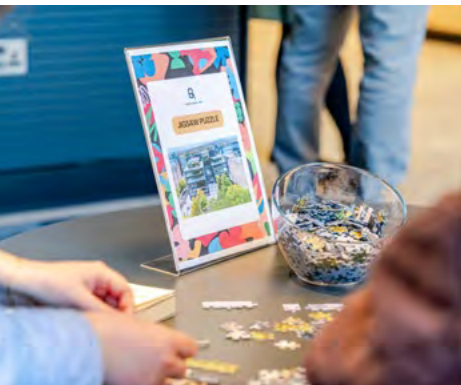


# WORK/LIFE BALANCED

A calendar of  
inclusive events  
and activations.

At Quatermile One, we take a collaborative and evolving approach to placemaking, focused on improving quality of life.\*

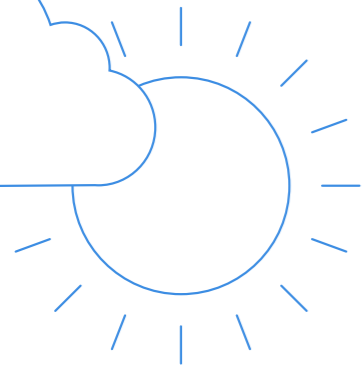
- People-centric solutions directly informed by occupier feedback to ensure your needs are always met
- A year-long enlivenment programme integrating initiatives for Diversity & Inclusion, ESG, and Wellbeing
- A focus on building a strong, connected community where your team feels a genuine sense of belonging



"I'm Scott, your Client Experience Manager at Quatermile One. In collaboration with the Knight Frank team, I deliver a personalised, hospitality-led service that enhances the everyday experience of our occupiers. Overseeing our front of house operations and a calendar of inclusive events and activations, my focus is on creating an engaging, connected workplace where people feel welcome, informed and supported. As the face of the building, my priority is to deliver a strong first impression and a consistently exceptional service experience, which embodies the quality and ambition of Quatermile One."

\*Placemaking delivered by the Knight Frank Place Team

QUARTERMILE ONE  
OVERVIEW



# FANTASTIC LIGHT FILLED OPEN SPACE

The available floor is flexible and efficient:

- Floor to ceiling glazing with outstanding natural daylight
- New, fully electric, VRF air conditioning
- New feature ceiling, incorporating mix of exposed services and acoustic raft suspended ceiling
- New LED lighting
- Contemporary male, female and accessible toilet/shower facilities
- Largely column free space



Quartermile One forms part of the outstanding Quartermile development on Lauriston Place backing on to Edinburgh’s famous Meadows. The Old Town, Princes Street and Exchange District are all within a short walk. It lies adjacent to the University of Edinburgh, Edinburgh Futures Institute (EFI) and The Bayes Centre. This offers unparalleled opportunities for businesses, including:

- **Direct access to cutting-edge research expertise**
- **Early visibility of emerging technologies**
- **Strong connections to top-tier graduate talent**
- **Leverage of shared innovation facilities and creation of academic partnerships**

The EFI development uses include teaching and event space, lecture halls, meeting rooms and work hubs. The restoration has also created a new public piazza.

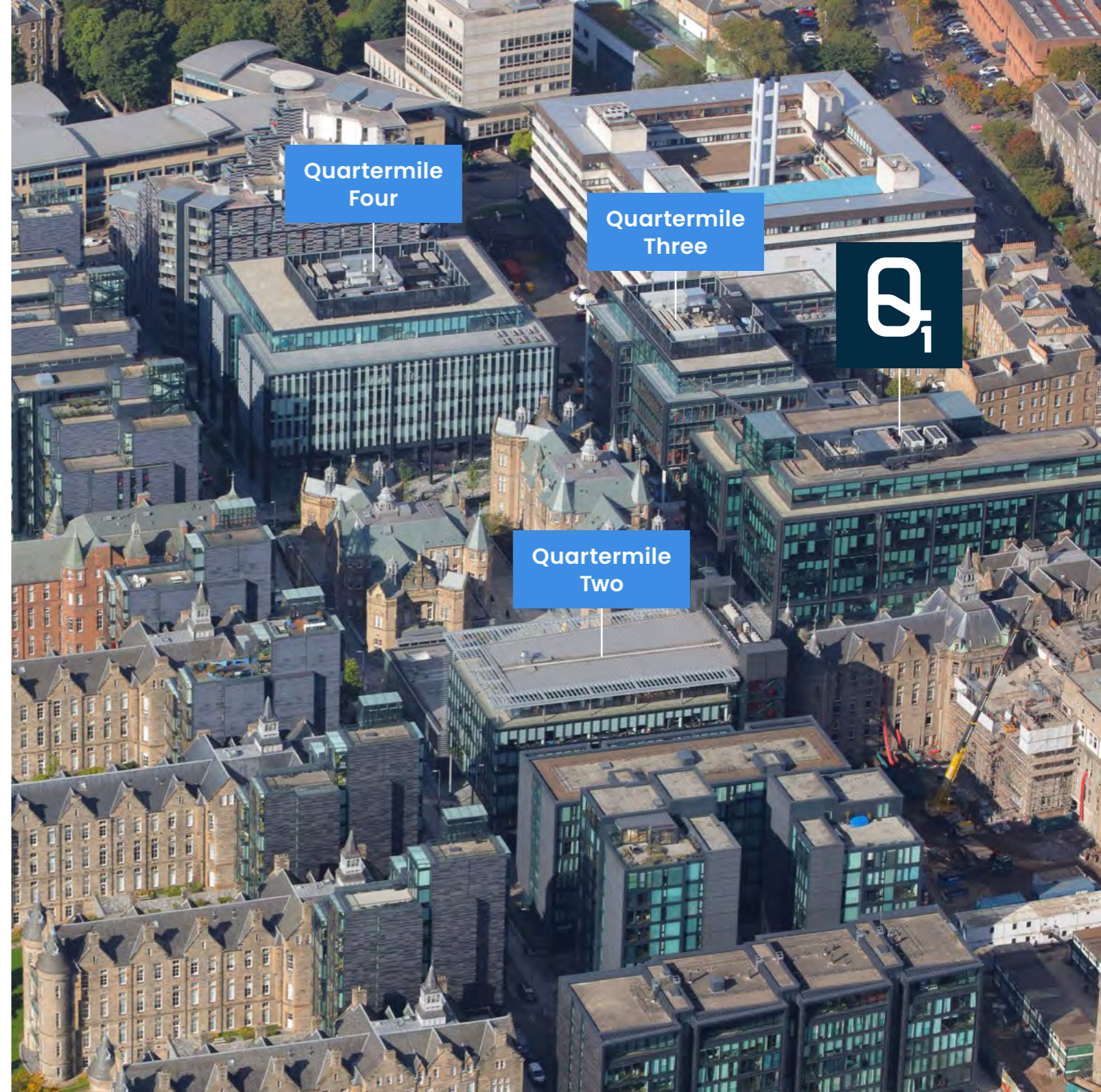
Edinburgh University is a fantastic source of graduate talent for employers in the city. Indeed, six months after graduating 96.5% of its students are in employment or postgraduate study, and it is one of the UK’s leading universities targeted for recruitment.<sup>1</sup>

<sup>1</sup> Source: ed.ac.uk

# BE AMONGST THE BEST



Edinburgh’s world famous heritage district is 5 minutes walk away.



The development is very well established and home to some of Edinburgh’s leading companies.

### Quartermile One

- Addepar
- Avaloq
- Ofcom
- Skyscanner
- Windward Energy

### Quartermile Two

- Crown Estate Scotland
- The Scotch Whisky Association

### Quartermile Three

- Cirrus Logic
- Enoda
- ESRI
- State Street

### Quartermile Four

- BMO Global Asset Management
- Cirrus Logic

# BUILDING SPECIFICATION





## A STUNNING BUILDING FIT FOR THE FUTURE

The available 4th floor has been refurbished to the highest quality.

An environmental management system has been introduced with a programme of energy saving improvements.

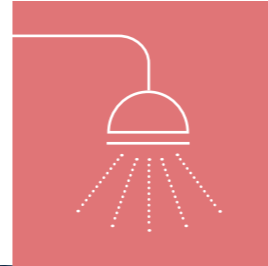
- Recycled metal floor tiles with 135mm void
- New carpets installed
- Re-decoration throughout
- De-furbished hybrid ceiling finish with acoustic raft system
- Clear floor to ceiling height of 2.7m
- New LED lighting with PIRs
- New VRF, all electric air conditioning
- Building Energy Management System (BMS)
- 4x 13 person lifts (1,000 kg)
- 1x goods lift (1,600 kg)
- 5 Star E-wave connectivity score

Sustainable features includes:

- Smart Landlord meter with individual metering per floor
- Heat recovery system
- Waterless urinals
- Platinum award for ModeScore and ActiveScore
- EPC A rating
- ISO 14001 accreditation
- 100% renewable green energy contract



# YOUR WELFARE FRONT & CENTRE

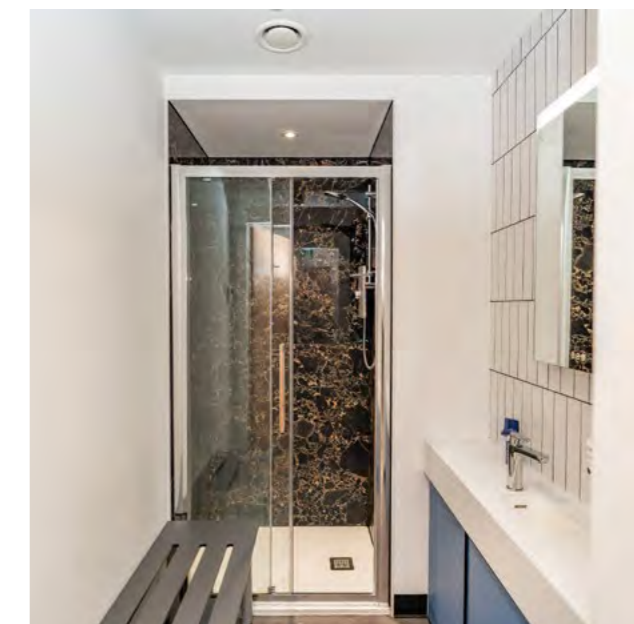
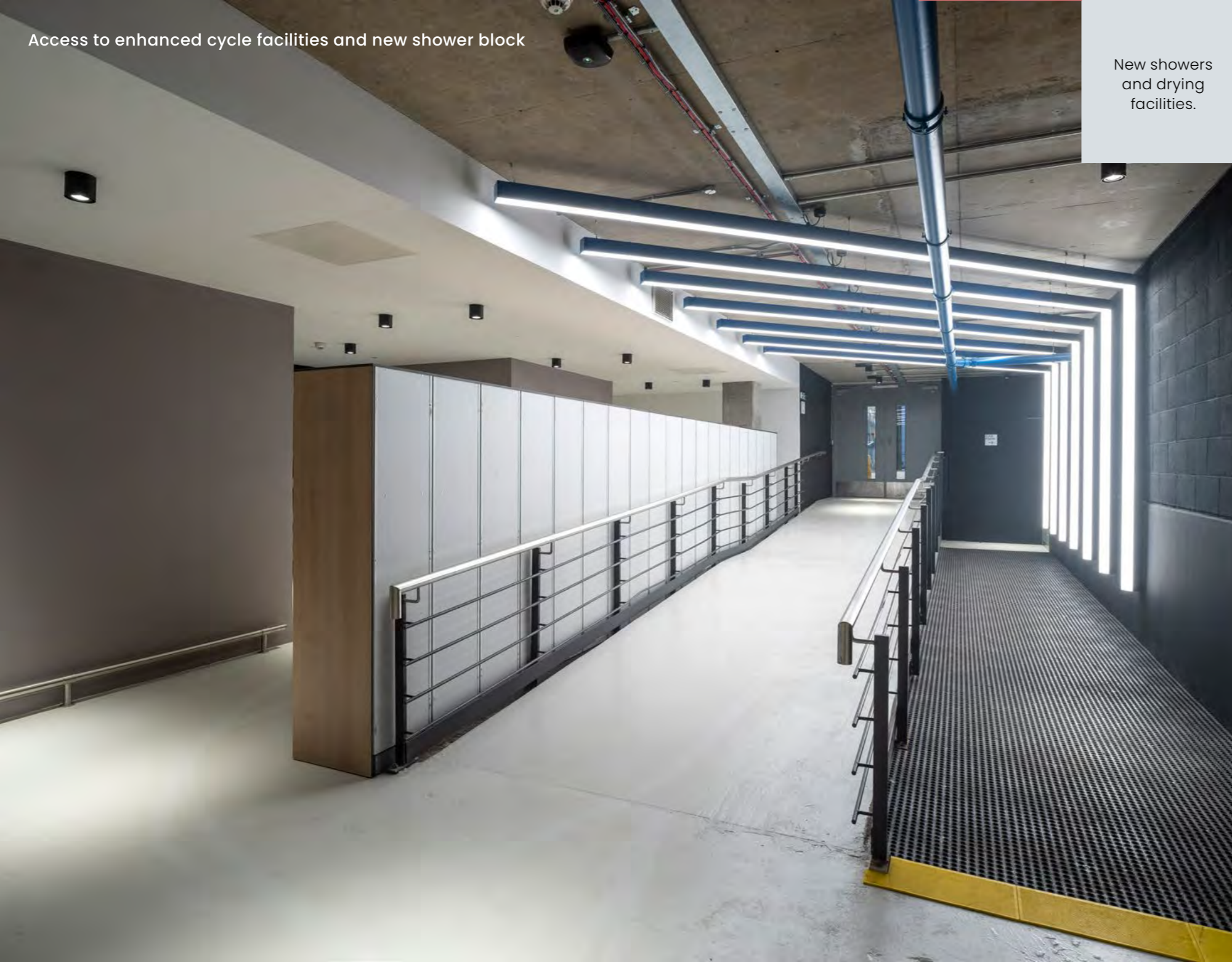


Access to enhanced cycle facilities and new shower block

New showers  
and drying  
facilities.

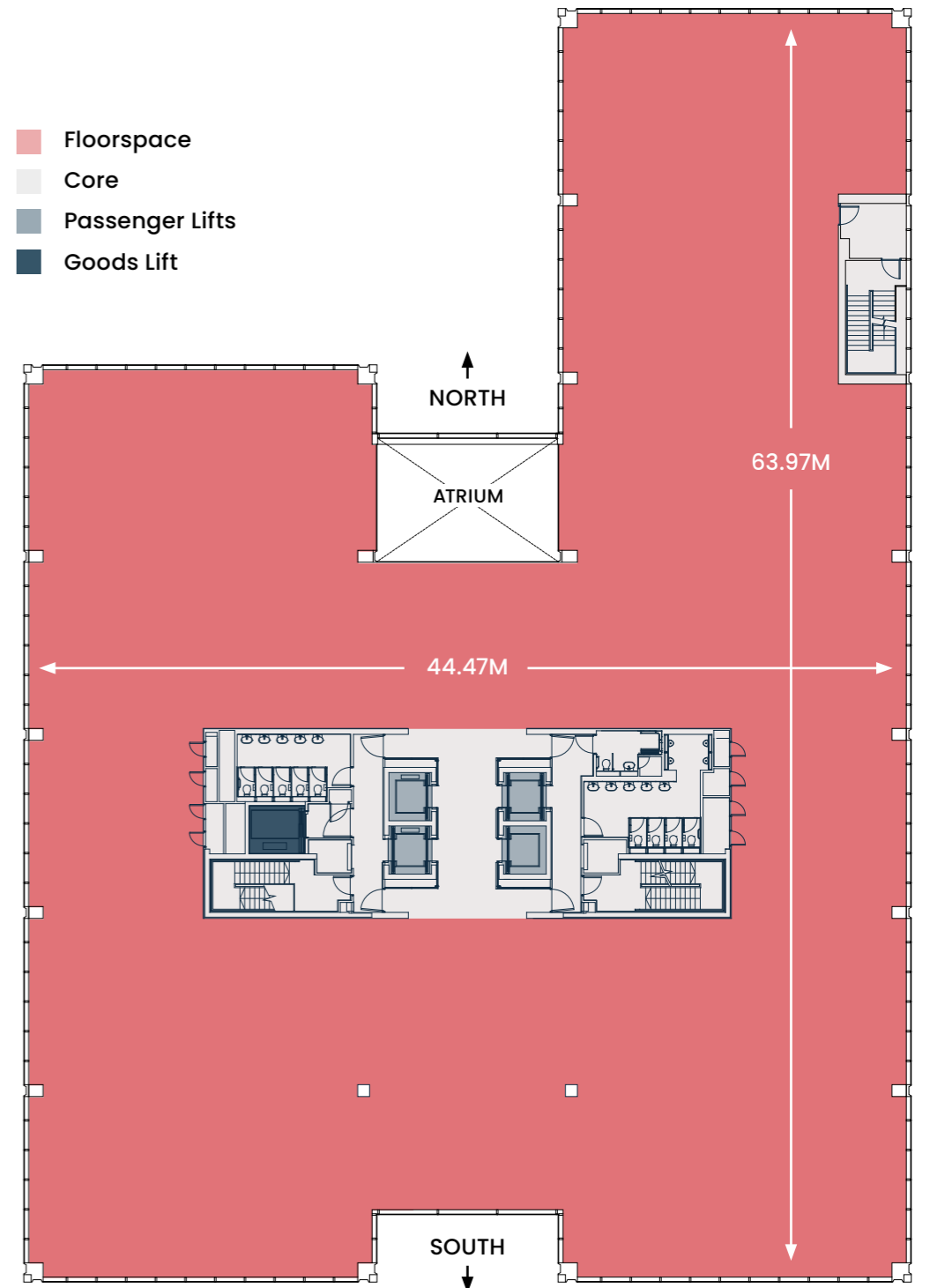
Quartermile One has a new welfare facility in the basement offering occupiers the following:

- Showers, including drying room
- New secure bike storage with space for 54 bikes with an additional 30 wall hanging spaces
- Bike repair stand
- 60 new lockers
- Onsite PureGym





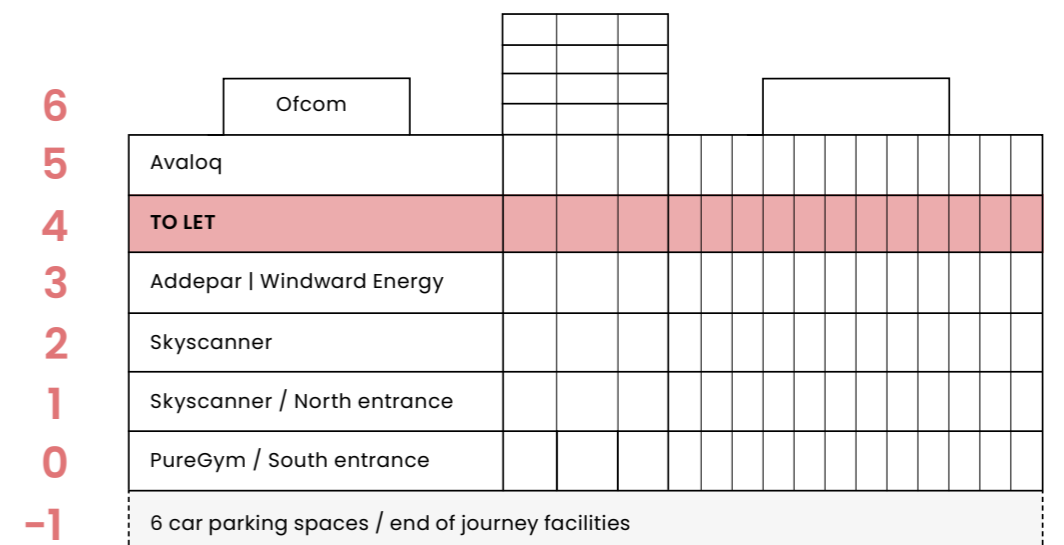
- Floorspace
- Core
- Passenger Lifts
- Goods Lift



# AVAILABLE SPACE

## Level 4

- 1,950 sq m / 20,987 sq ft
- Can be subdivided to provide c. 8,000 / 12,000 sq ft options
- Up to 6 car parking spaces



# SPACE PLAN SUITE A



1,120 sq m / 12,063 sq ft

- Reception and Client Lounge
- Meeting Rooms X 8
- Focus Rooms X 6
- Breakout and Collaboration Areas X 23; Hot Desks X 14
- Open Plan Office - Workstations (1600 X 800mm) X 88
- Passenger Lifts X 4
- Goods Lift X 1
- Server Room

Space plan of 1 person per 8-10 sqm



# SPACE PLAN SUITE B

786 sq m / 8,468 sq ft

- Reception and Client Lounge
- Meeting Rooms X 5
- Focus Rooms X 2
- Breakout and Collaboration Areas X 19; Hot Desks X 6
- Open Plan Office - Workstations (1600 X 800mm) X 68
- Passenger Lifts X 4
- Goods Lift X 1
- Server Room

Space plan of 1 person per 8-10 sqm





**LOCATION &  
CONNECTIONS**

# CLOSER THAN YOU THINK





# CONNECT FASTER

## Train

Waverley Station is a 15 minute walk away with regular fast connections to Glasgow and beyond, and Haymarket station is just 21 minutes away.

On an average weekday there are 21 trains from Edinburgh to London.<sup>1</sup>

Journey times from Waverley:

GLASGOW	50 MINS
NEWCASTLE	1 HR 30 MINS
ABERDEEN	2 HRS 15 MINS
MANCHESTER	3 HRS 12 MINS
BIRMINGHAM	4 HRS 14 MINS
LONDON	4 HRS 20 MINS



## Bus

Multiple bus routes run nearby connecting Quatermile One with the wider Edinburgh area and beyond – routes 23, 27, 35, 45, 47 and 300.<sup>2</sup> The Skylink airport bus stop is a 10 minute walk away on nearby Bread Street.



## Tram

Quatermile One is a 15 minute walk from the Princes Street tram stop, with services every 7 - 10 minutes quickly and conveniently connecting the city centre with Edinburgh Airport in approximately 35 minutes.



## Air

Edinburgh Airport is a short bus, tram, or taxi ride away. It is Scotland's busiest, and the UK's 6th busiest airport overall, and carries over 14.7m passengers a year. A total of 37 airlines fly 221 routes to 158 destinations around the world.<sup>3</sup>



<sup>1</sup> Source: thetrainline.com

<sup>2</sup> Source: Lothian Buses

<sup>3</sup> Source: Edinburghairport.com

# YOUR OASIS IN THE CITY



The Meadows, just a couple of minutes from Quatermile One, provides acres of open space featuring:

- Children's playgrounds
- Tennis courts
- Bowling greens
- Croquet
- 36-hole short hole golf course
- Recreational sports pitches
- Outdoor gym circuit with fixed equipment
- Many recurring outdoor clubs/activities



The Meadows,  
58 acres of  
wonderful  
parkland.



# AMENITIES



# IT'S ALL WAITING FOR YOU



Soderberg with arguably the best coffee in town is less than 2 minutes away.

Quatermile One offers excellent amenities in the building, in Lister Square opposite and across the wider development.

**22** Coffee shops within a 10 minute walk

**10** Sandwich shops within a 5 minute walk

**30** Bars within a 7 minute walk

**80** Restaurants within a 10 minute walk

A selection of our local favourites include the following:



For a truly excellent cup of coffee



A great independent focusing on quality beans



Vibrant, fast-paced Thai street food



TRIBE YOGA

One of the best yoga studios in Edinburgh



For pizza's with creative toppings and quality base



One of the best pubs in Scotland

**Key outlets in Quatermile**

- 1 Caffe Nero
- 2 Chinese Bubble Tea
- 3 Soderberg Pavilion
- 4 Starbucks
- 5 Butta Burger
- 6 Nanyang Malaysian
- 7 Sainsbury's Local
- 8 Soderberg The Meadows
- 9 Residence Inn by Marriot
- 10 Novotel

**Restaurants**

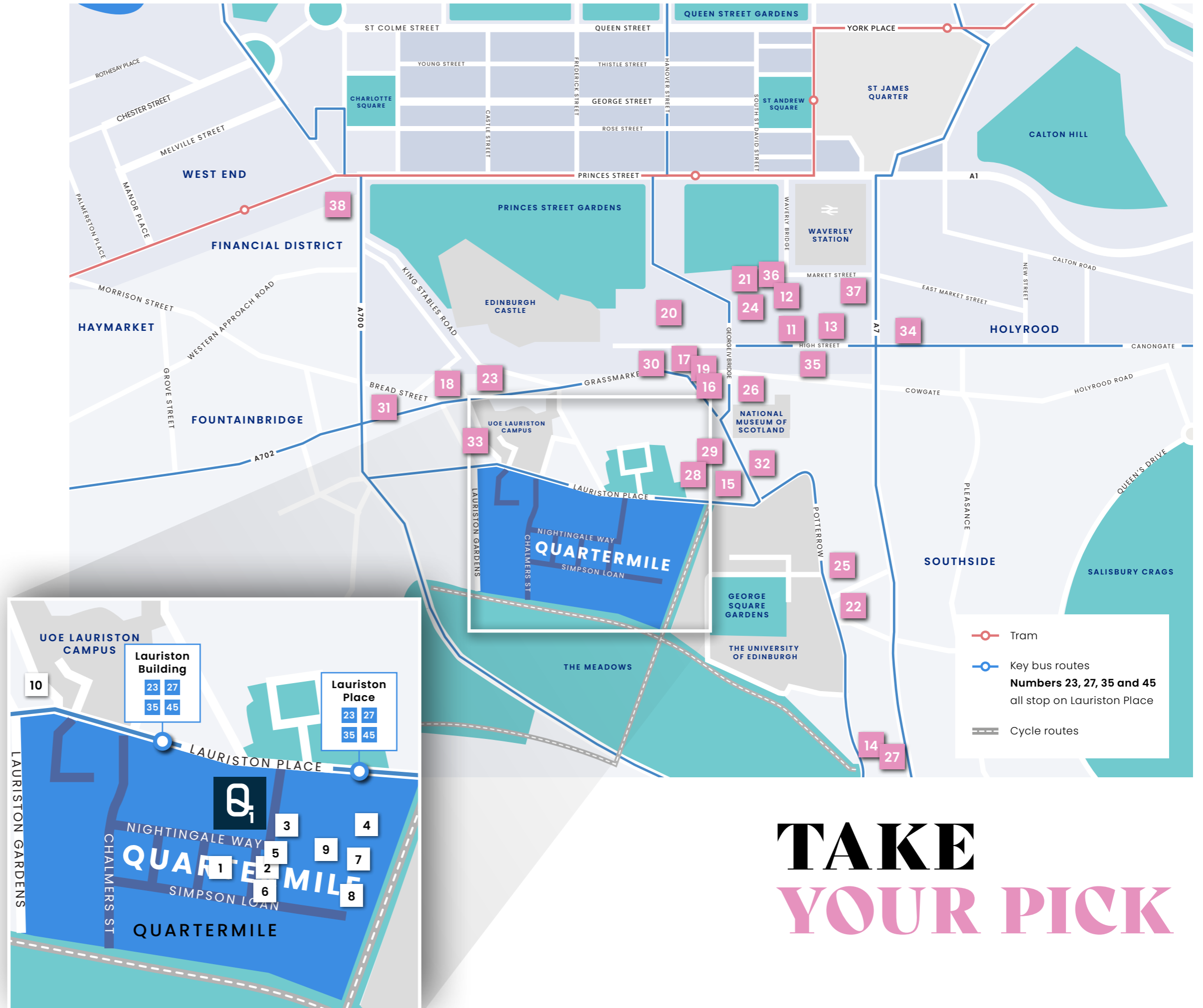
- 11 Angels with Bagpipes
- 12 El Cartel
- 13 Montieth's
- 14 Conditia
- 15 Ting Thai Caravan
- 16 Divino Enoteca
- 17 Ondine
- 18 Timberyard
- 19 Vittoria
- 20 The Witchery

**Bars**

- 21 The Devil's Advocate
- 22 56 North
- 23 Dragonfly
- 24 McSorley's
- 25 The Pear Tree
- 26 Revolution
- 27 The Royal Dick
- 28 Doctors
- 29 Sandy Bell's

**Hotels**

- 30 The Radisson Collection
- 31 Hilton Double Tree
- 32 Hotel du Vin
- 33 Premier Inn
- 34 Radisson Blu
- 35 Ibis
- 36 Motel One
- 37 The Scotsman
- 38 Waldorf Astoria



**TAKE  
YOUR PICK**



**Toby Withall**

E: [toby.withall@knightfrank.com](mailto:toby.withall@knightfrank.com)

T: 07770 017007

**Erin Beaton**

E: [erin.beaton@knightfrank.com](mailto:erin.beaton@knightfrank.com)

T: 07976 668975

**Craig Watson**

E: [craig.watson@jll.com](mailto:craig.watson@jll.com)

T: 07739 299532

**Hannah Done**

E: [hannah.done@jll.com](mailto:hannah.done@jll.com)

T: 07927 566327

**Managed by:**



**Particulars:** These particulars are not an offer or contract, nor part of one. You should not rely on statements by Knight Frank LLP in the particulars or by word of mouth or in writing ("information") as being factually accurate about the property, its condition or its value. Neither Knight Frank LLP, JLL nor any joint agent has any authority to make any representations about the property, and accordingly any information given is entirely without responsibility on the part of the agents, seller(s) or lessor(s). **Photos etc:** The photographs show only certain parts of the property as they appeared at the time they were taken. Areas, measurements and distances given are approximate only. Photography taken September 2025. **Regulations etc:** Any reference to alterations to, or use of, any part of the property does not mean that any necessary planning, building regulations or other consent has been obtained. A buyer or lessee must find out by inspection or in other ways that these matters have been properly dealt with and that all information is correct. **VAT:** The VAT position relating to the property may change without notice. November 2025.

Knight Frank LLP is a limited liability partnership registered in England with registered number OC305934.

Jones Lang LaSalle Limited, Registered in England and Wales Number 1188567 Registered office: 30 Warwick Street London W1B 5NH

Design: M&T&Co