



**STRETTONS**



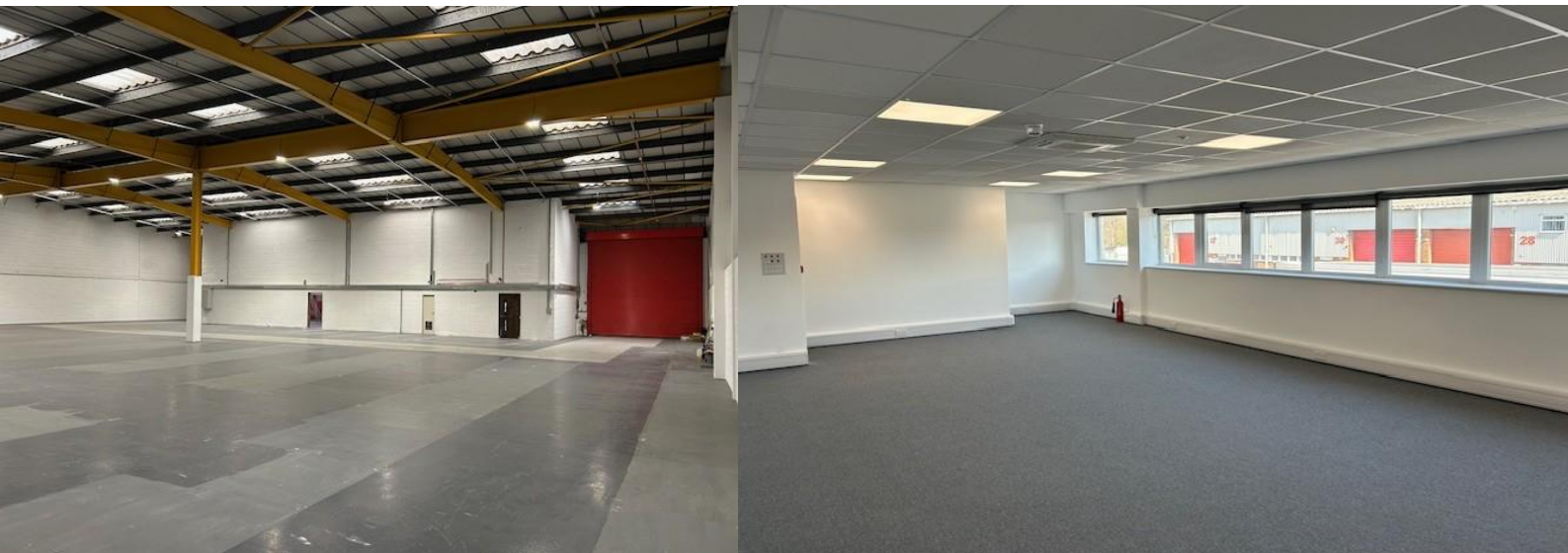
# TO LET

Unit 34-36 London Industrial Park, Eastbury Road

London, E6 6LP

13,717 sq ft

Industrial



**Industrial To Let**

[strettons.co.uk](http://strettons.co.uk)

# 34 Eastbury Road, London, E6 6LP

## Description

The property comprises two adjoining single storey industrial warehouse units of steel portal frame construction, with first floor offices and good loading and parking facilities. The units benefit from the following amenities:

- Min Eaves height 5.5m
- 2 electric roller shutter loading doors
- First floor offices with heating, lighting and double glazed windows
- Good loading and parking
- Male and female WC's
- Lighting to warehouse
- 3 phase power & gas

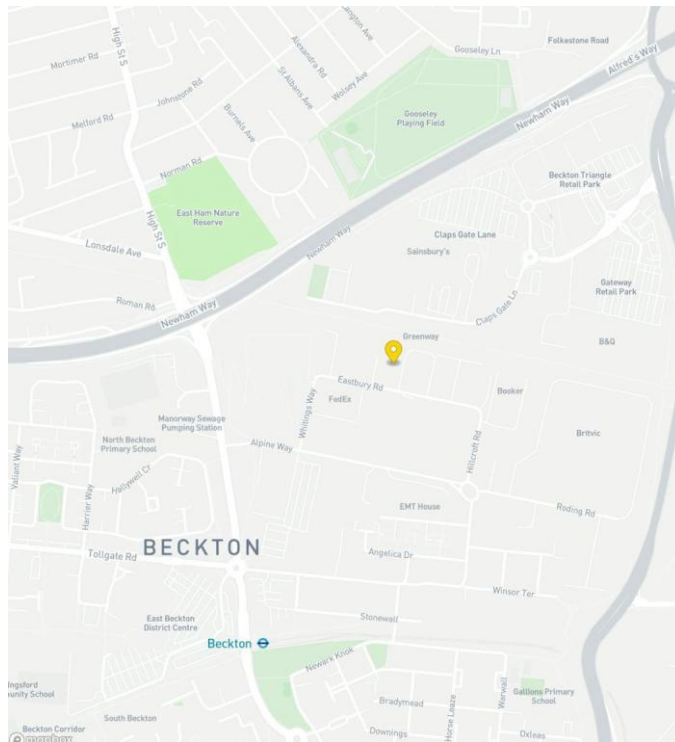
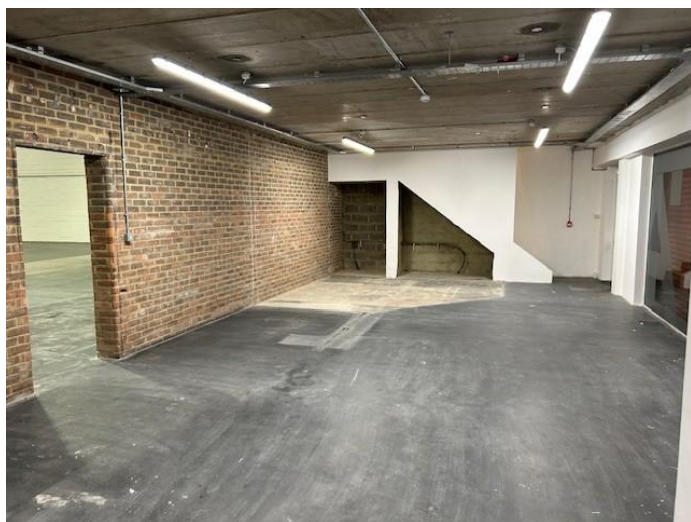
## Location

The units are located on the popular London Industrial Park, which is situated to the south of the A13 at the junction with Woolwich Manor Way (A117). London Industrial Park has good access to Central London and Docklands via the A13 and North Circular Road (A406). The M11 and M25 motorways are easily accessible

London City Airport is approximately 2 miles to the south and Beckton DLR Station is within 10 minutes walk of the property providing regular services to Bank, Canary Wharf, Stratford and Lewisham.

## Accommodation GEA

Name	sq ft	sq m
Units 34 & 36	13,717	1,275



<b>Terms</b>	To Let
<b>Rent</b>	£25 per sq ft
<b>EPC</b>	An EPC will be available to interested parties
<b>Rateable Value</b>	£275,000
<b>VAT</b>	Payable on the rent and service charge

## Contacts

Nick Haywood

07836 554624

[nick.haywood@strettons.co.uk](mailto:nick.haywood@strettons.co.uk)

Harry Robins

07866 075899

[Harry.robins@strettons.co.uk](mailto:Harry.robins@strettons.co.uk)



Strettons and their clients give notice that: 1. They are not authorised to make or give any representations or warranties in relation to the property either here or elsewhere, either on their own behalf or on behalf of their client or otherwise. They assume no responsibility for any statement that may be made in these particulars. These particulars do not form part of any offer or contract and must not be relied upon as statements or, representations of fact. 2. Any areas, measurements or distances are approximate. The text, photographs and plans are for guidance only and are not necessarily comprehensive. It should not be assumed that the property has all necessary planning, building regulation or other consents and the Agents have not tested any services, equipment or facilities. Purchasers must satisfy themselves by inspection or otherwise.