

DISCOVER F&B
AND RETAIL
OPPORTUNITIES
AT 3 LOWER
THAMES STREET

FRESH

WHARF

NORTHBANK

EC3



**12,992 SQ FT OF SPACE ON
THE THAMES. THREE UNITS
ACROSS TWO LEVELS IN LONDON'S
BOLD NEW RIVERSIDE HUB.**





THE PERFECT DINING PANORAMA / VIEW TOWER BRIDGE TO LONDON BRIDGE

01 / LOCATION / ON THE NORTHBANK WITH PANORAMIC SOUTHFACING VIEWS



Panoramic Thames views from a statement terrace – perfect for a landmark restaurant. **Positioned between Bank, London Bridge, and Borough Market,** with high footfall from office commuters and tourists alike.

**RIVERLIFE REDEFINED.
COFFEE CATCHUPS
RIVERSIDE SHOPPING
ALFRESCO DINING
– FRESH WHARF OFFERS
A VIBRANT NEW SPOT TO
SOAK UP THE BEST OF LONDON.**

02 / LOCAL AREA / WHERE 40,000 PEOPLE PASS BY EVERY DAY



Monument/Bank Station records an annual footfall of approximately 37.2 million passengers, while London Bridge Station sees around 54.7 million each year.

Steps from London Bridge transport hub, with riverside footfall, road access, and cycle routes – the perfect spot for customers, staff, taxis and deliveries.

WALK

Monument/Bank Station	03 mins
London Bridge Station	07 mins
Cannon Street Station	08 mins
Fenchurch Street Station	09 mins
Tower Hill Station	09 mins

03 / NEIGHBOURS / EVERY DAY WITH LONDON'S FINEST





THE WOLSELEY



HISTORY & MODERN FLAVOURS AT LEADENHALL MARKET



THE COPPA CLUB

STEP OUT TO SOME OF
THE CITY'S BEST BITES AND
BARS JUST MOMENTS AWAY.



04 / DESIGN / ICONIC MODERNISM REWORKED



**THE PERFECT DINING SPOT FOR
A CLIENT MEETING OR EVENING
CATCHUP WITH FRIENDS.**

A SERENE ARRIVAL IN CENTRAL LONDON.



GROUND FLOOR

AMENITY SPACE 6,200 SQ FT

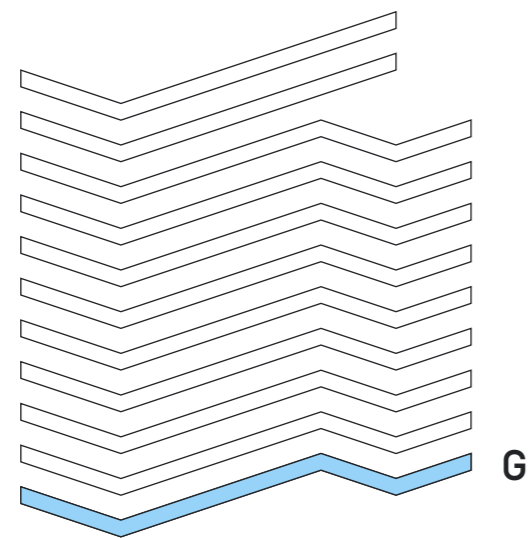
CAFE 2,067 SQ FT

LOWER THAMES STREET



RIVER FRONT

RIVER THAMES

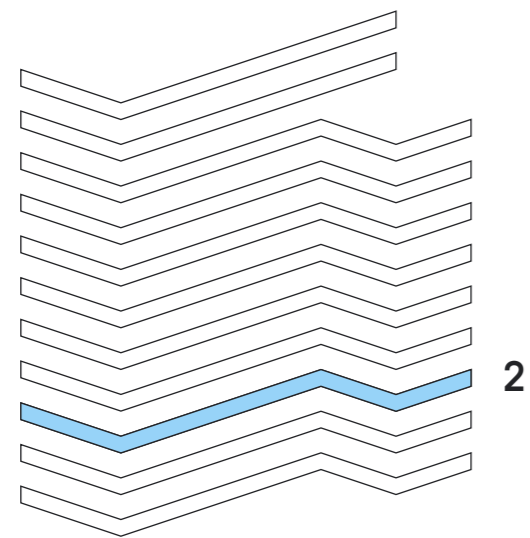
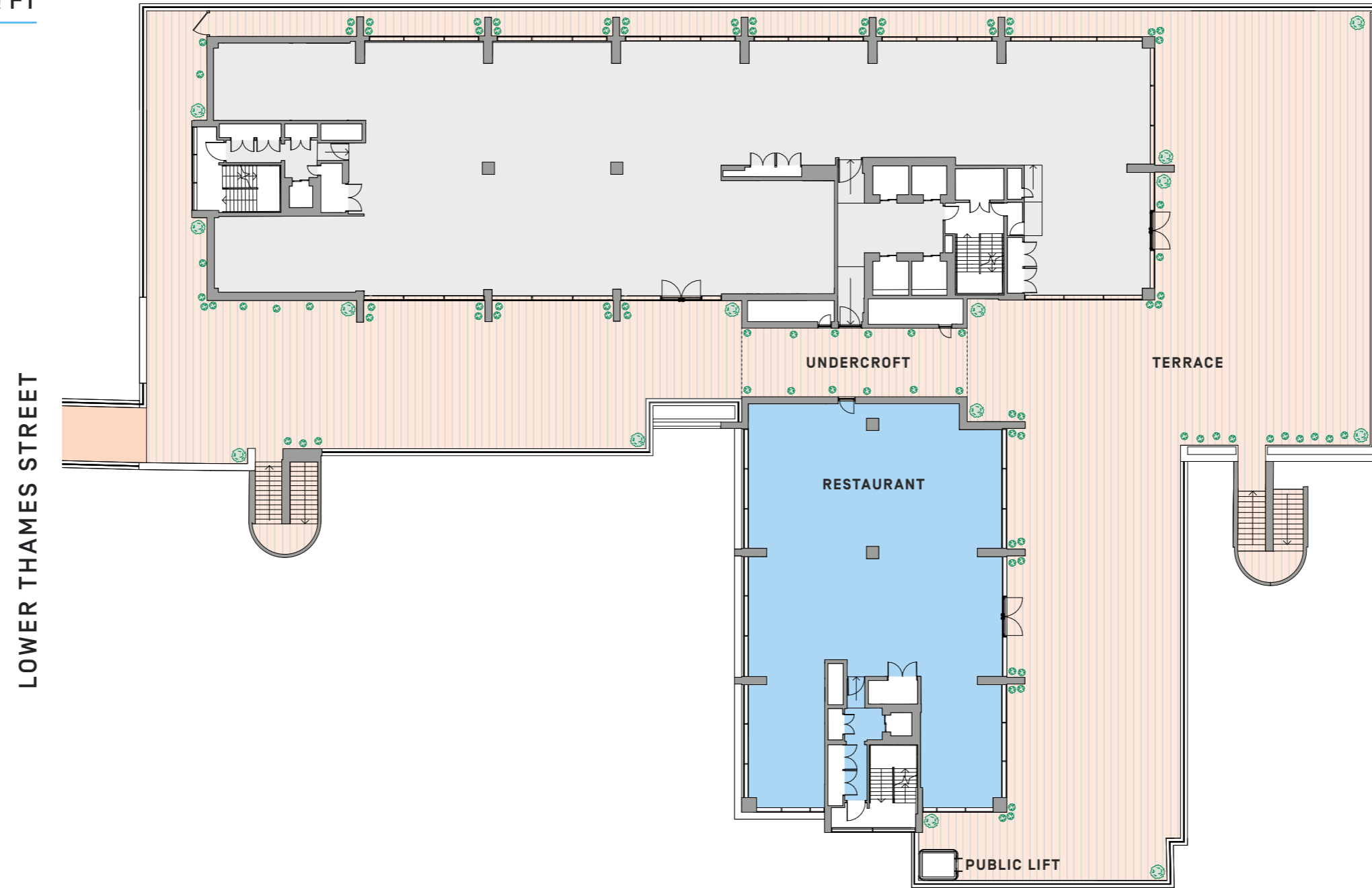


FLOOR LOCATOR

FLOOR. 02

RESTAURANT

4,725 SQ FT



2

FLOOR LOCATOR

RIVER FRONT

RIVER THAMES

FRESH

WHARF

NORTHBANK

EC3

one
voice
hospitality

Ted Schama
ted@onevoicehospitality.co.uk
+44 797 383 4306

Jonah Blackburn
jonah@onevoicehospitality.co.uk
+44 750 805 0082

GET IN TOUCH WITH THE AGENTS

No description or information given whether or not in these particulars and whether written or verbal ["information"] about the property or its condition or its value may be relied upon as a statement or representation of fact. No agents have any authority to make any representations and accordingly any information given is entirely without responsibility on the part of the agents or seller. Any areas measurements or distances given are approximate only. Any reference to alterations to, or use any part of the property is not a statement that is not necessary planning, building regulations or other consent has been obtained. These matters must be verified by any intending buyer. Any buyer must satisfy themselves by inspection or otherwise as of the correctness of any information given from distribution. October 2025