

Commercial Office Space

10-16 desks and a private meeting room

Refurbished office in prime Shoreditch location

MANAGED OFFICE

28-30 Worship Street, Shoreditch, London, EC2A 2AH

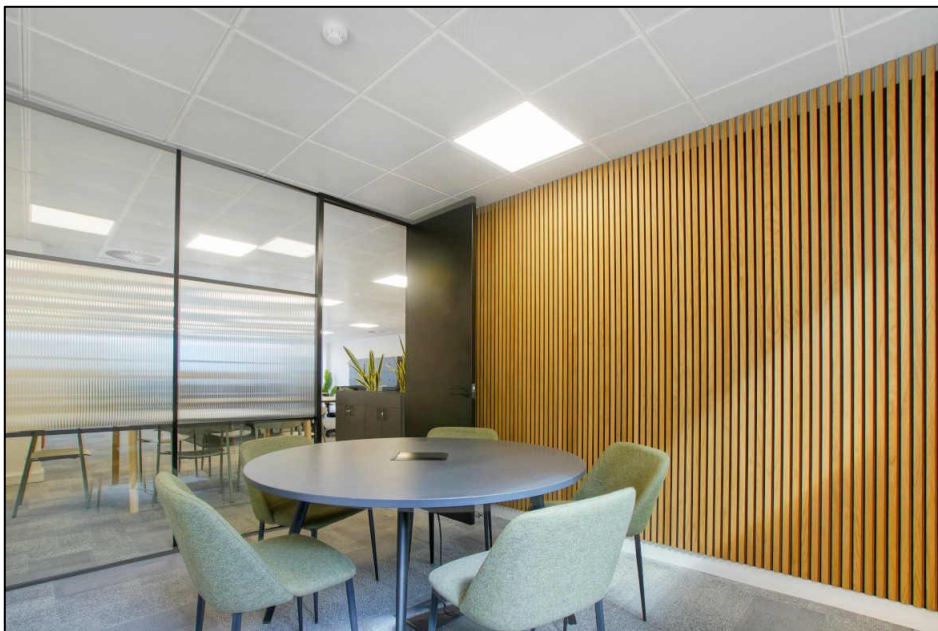
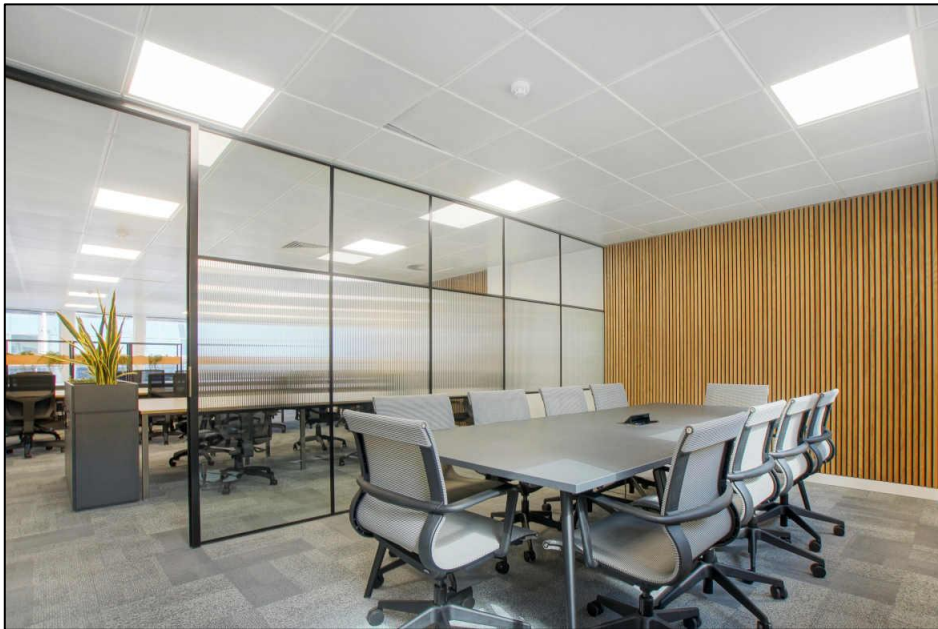


LOCATION

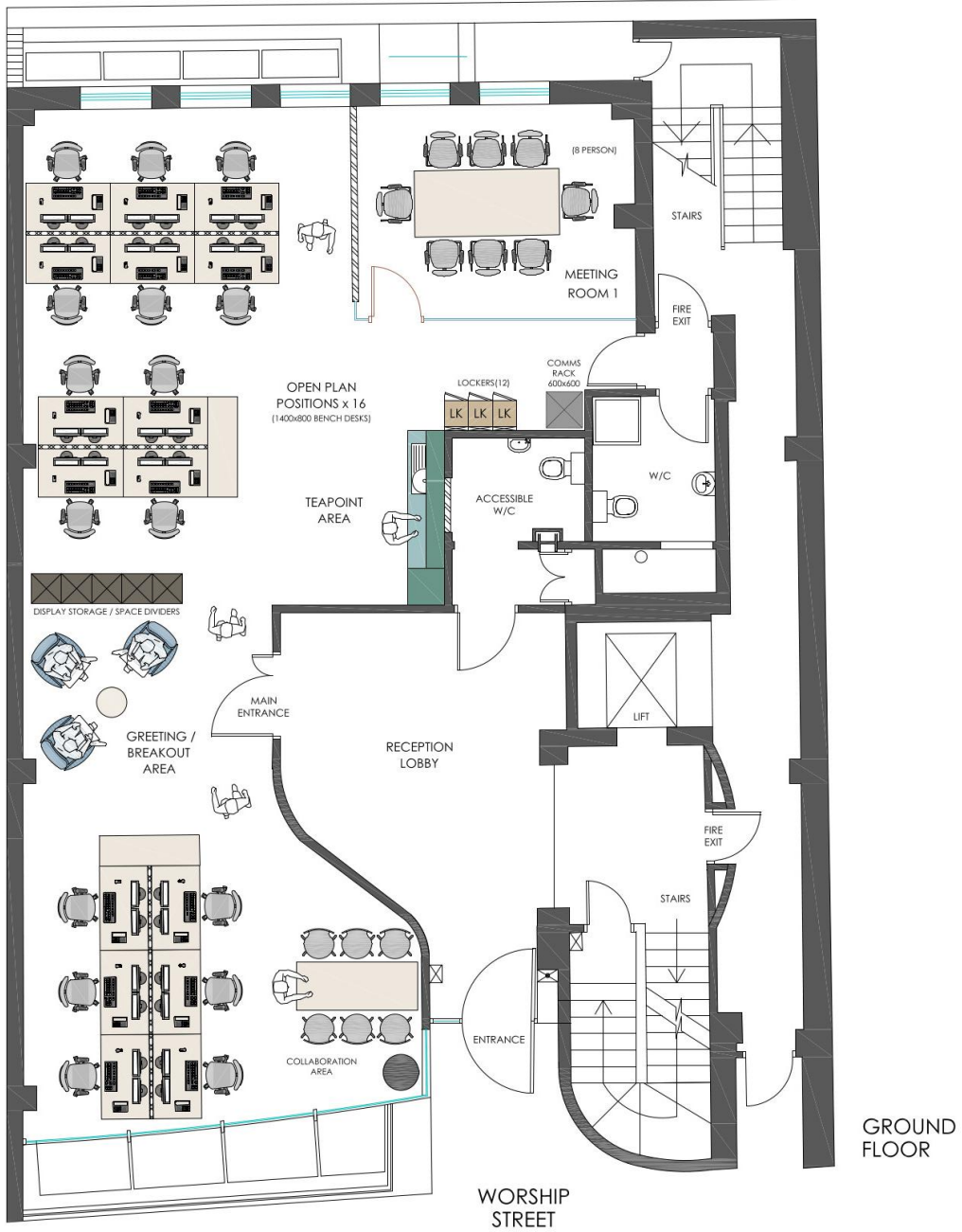
The building is located on the south side of Worship Street which is strategically situated just north of Broadgate, Finsbury Square and The City of London and just south of vibrant Shoreditch. The area benefits from the many amenities on offer including bars, restaurants and shopping. The building is located adjacent to the new Alphabeta building, one of the largest TMT developments in the city & Shoreditch.

TRANSPORT

Liverpool Street (Central, Circle, Elizabeth, Hammersmith & City and Metropolitan lines, Overground and National Rail)
Moorgate (Northern line)
Old Street (Northern line and National Rail)
Shoreditch High Street (Overground)



GROUND FLOOR PLAN



SUBJECT TO CHECK SURVEY

BREAKDOWN OF FACILITIES:-

- 16 x OPEN PLAN POSITIONS (1400x800 BENCH).
- 1 x MEETING ROOM (8 PERSONS).
- 1 x GREETING & BREAKOUT AREA.
- 1 x COLLABORATION AREA.
- 1 x TEAPOINT.

- 1 x COMMS AREA.
- 1 x TOUCHDOWN AREA.
- 1 x LOCKER ZONE.

TOTAL HEADCOUNT - 16 WORK POSITIONS



DESCRIPTION

The floor has have been fully refurbished, fitted and furnished providing the ideal space for those looking to get to work straight away.

The ground floor is fitted with 12x desks, a meeting room and a fitted kitchenette / break out space.

AMENITIES

- Newly refurbished
- New power and data cabling
- Kitchenette
- 10-16 Desks
- 1x meeting room
- Excellent natural daylight
- Demised W/C's
- Air conditioned
- Shower

Floor	Size Sq. Ft.	No. Of Desks	Total Managed Cost (includes rent, service charge, business rates & cleaning)		
			Per Sq. Ft.	Per Calendar Month	Per Annum
Ground	1,205	10-16	£95.00	£9,750	£117,000

LEASE

New flexible leases are available for a term by arrangement.

PLEASE CONTACT

ANTON PAGE 020 7336 1313

Alfie Newton
anewton@antonpage.com

Harrison Turner
hturner@antonpage.com