

Eastgate Court

High Street, Guildford, Surrey GU1 3AW



6,450 sq ft (599.2 sq m) of high quality, town centre, air conditioned offices with 13 car spaces to let

Description

The first floor provides excellent, air conditioned accommodation arranged largely in open plan, but currently laid out to incorporate an attractive reception area, board room, meeting rooms and open plan work space.

The space which benefits from excellent natural light, is fully wired and includes a large break out/kitchen area incorporating all modern appliances and a dedicated server room.

The floor has a net floor area of 6,450 sq ft (599.2 sq m) and benefits from 13 secure basement car parking spaces.



Air conditioning



2 x passenger lifts



13 car parking spaces



Bicycle storage



Shower facilities



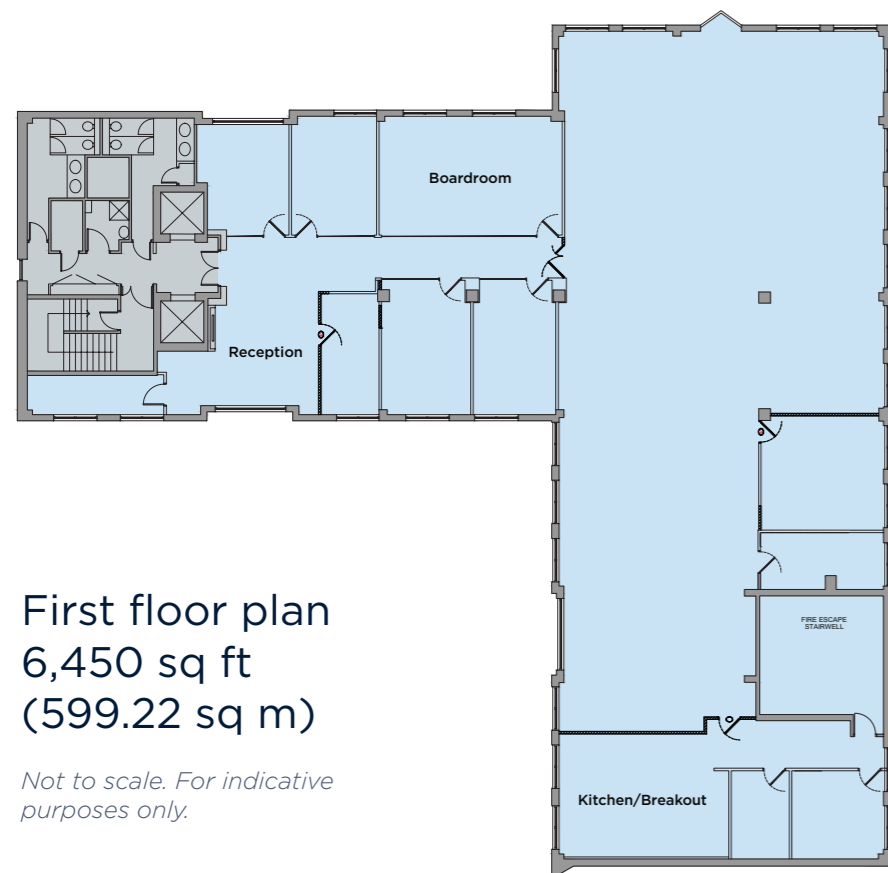
Prime town centre, high street location



Fully wired space

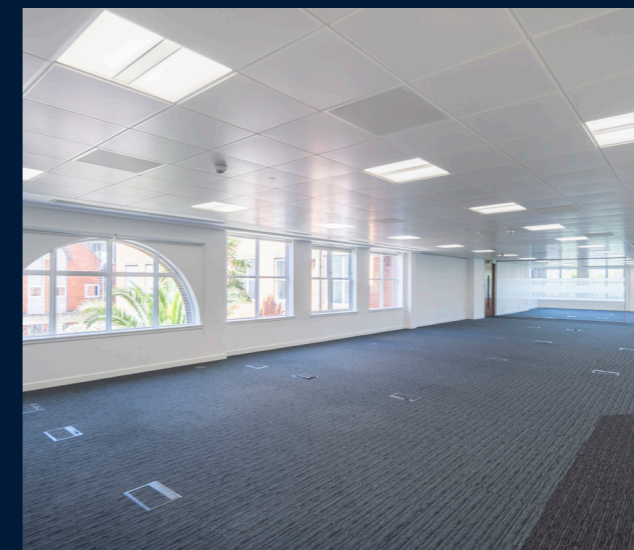


Boardroom and meeting rooms



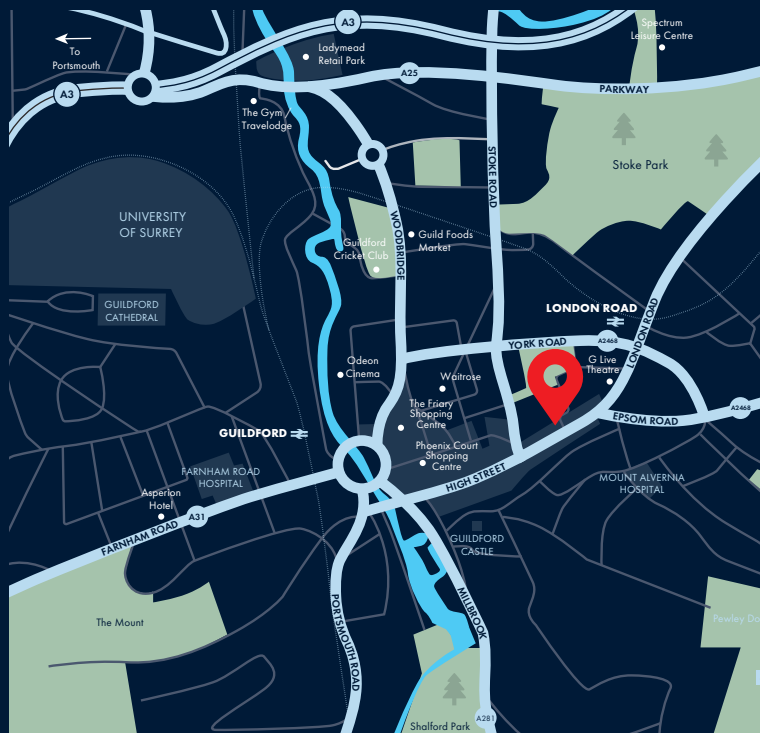
First floor plan
6,450 sq ft
(599.22 sq m)

Not to scale. For indicative purposes only.



Location

Eastgate Court occupies a prominent position in the Upper High Street in central Guildford. The property benefits from excellent access to the town's extensive retail, café and leisure amenities as well as Guildford Station, which provides regular fast services to London Waterloo. The property is also easily accessible by road, with the A3, located nearby, linking to the M25.



Further Info

Contact

Peter da Silva
07768 146 953
pds@owenisherwood.com

Kieran Morgan
07904 377 405
kieran@owenisherwood.com



Pippa Vincent
07785 935 313
pippa.vincent@gn2.uk.com

Julie Rees
07710 257 924
julie.rees@gn2.uk.com



Terms

On application.

These particulars do not constitute, or form any part of, any offer or contract, and whilst all the information given is believed to be correct, all interested parties must satisfy themselves of its accuracy. All prices and rents are quoted exclusive of VAT, unless otherwise stated. Designed by take-shape.co.uk. May 2026.