

# IMPERIAL & WHITEHALL

23 Colmore Row, Birmingham B3 2BP

Premium Offices To Let  
Suite 2.05  
2,923 sq ft

Imperial & Whitehall is a high quality second floor office on Colmore Row.

Located directly opposite St Philip's Cathedral in the very heart of Birmingham's business district.

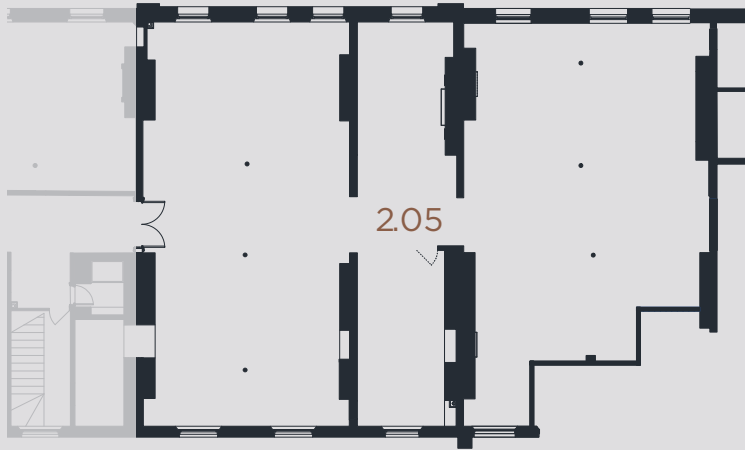
The accommodation is situated on the second floor. The suite provides exceptionally modern, newly refurbished office space.



View 360  
virtual tour

[www.imperialandwhitehall.co.uk](http://www.imperialandwhitehall.co.uk)





## Schedule

<b>Suite</b>	<b>2.05</b>
Sq m	271.52
Sq ft	2,923



Cat 6 cabling



Air conditioning



Kitchen facilities



Perimeter trunking



Modern LED lighting



Floor boxes



23 Colmore Row, Birmingham B3 2BP



Indicative fit-out



**fisher  
german**

**Charles Warrack**

Charles.Warrack@fishergerman.co.uk  
07977 512 965

**Ellie Fletcher**

Ellie.Fletcher@fishergerman.co.uk  
07974 431 243



**Evie Davis**

Evie.Davies@jll.com  
07561 878 180

Disclaimer: Fisher German and JLL on their behalf and for the vendors or lessors of this property whose agents they are, give notice that: 1. These particulars are set out as a general outline only for guidance to intending purchasers or lessees, and do not constitute any part of an offer or contract. 2. Details are given with out any responsibility and any intending purchasers, lessees or third parties should not rely on the mas statements or representations of fact, but must satisfy themselves by inspection or otherwise as to the correctness of each of them. 3. No person in the employment of Fisher German and JLL has any authority to make any representation or warranty whatsoever in relation to this property. 4. Unless otherwise stated, all prices and rents are quoted exclusive of VAT. 2025. Note: All plans, photographs and CGIs are for identification purposes only. 2025. Designed and produced by: Barques 0121 233 2080 barques.co.uk