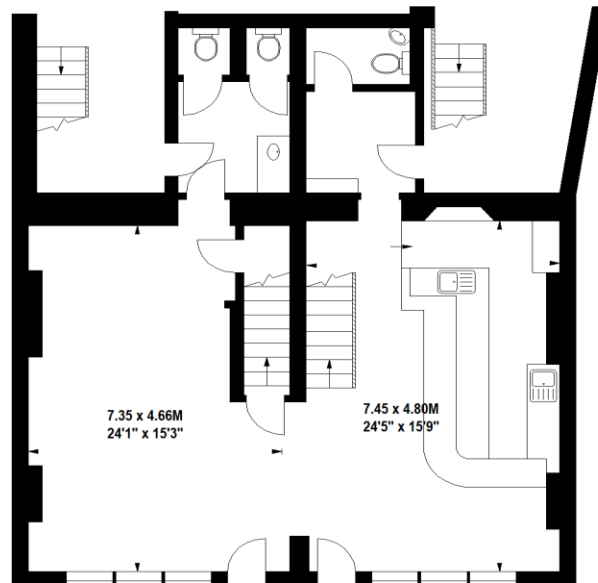
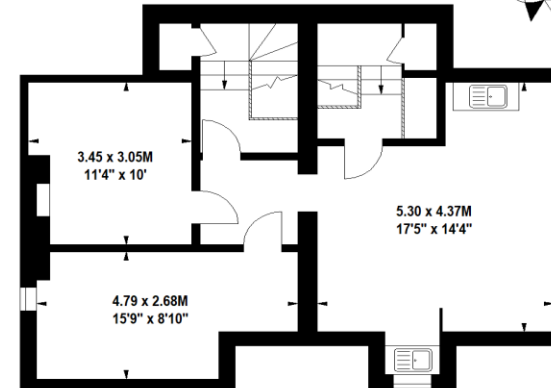


**6 - 7 South Western Terrace,
Yeovil, Somerset, BA20 1NB**

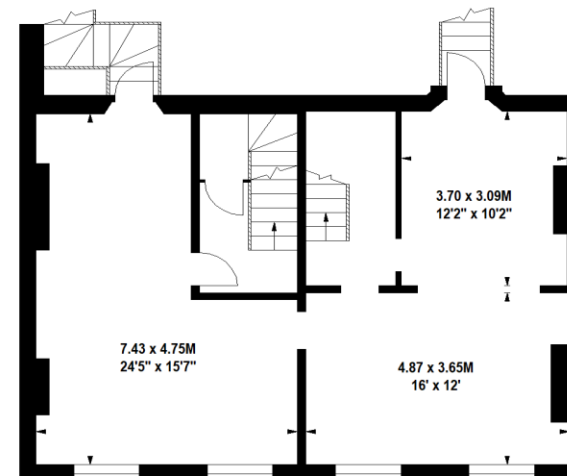
Approximate Gross Internal Area 225 sq m / 2422 sq ft



Ground Floor



Second Floor



First Floor

Floor Plan produced for Chesters Harcourt by Mays Floorplans ©. Tel 020 3397 4594
Illustration for identification purposes only, not to scale
All measurements are maximum, and include wardrobes and window bays where applicable