

10-11 PARK PLACE

10-11parkplace.co.uk

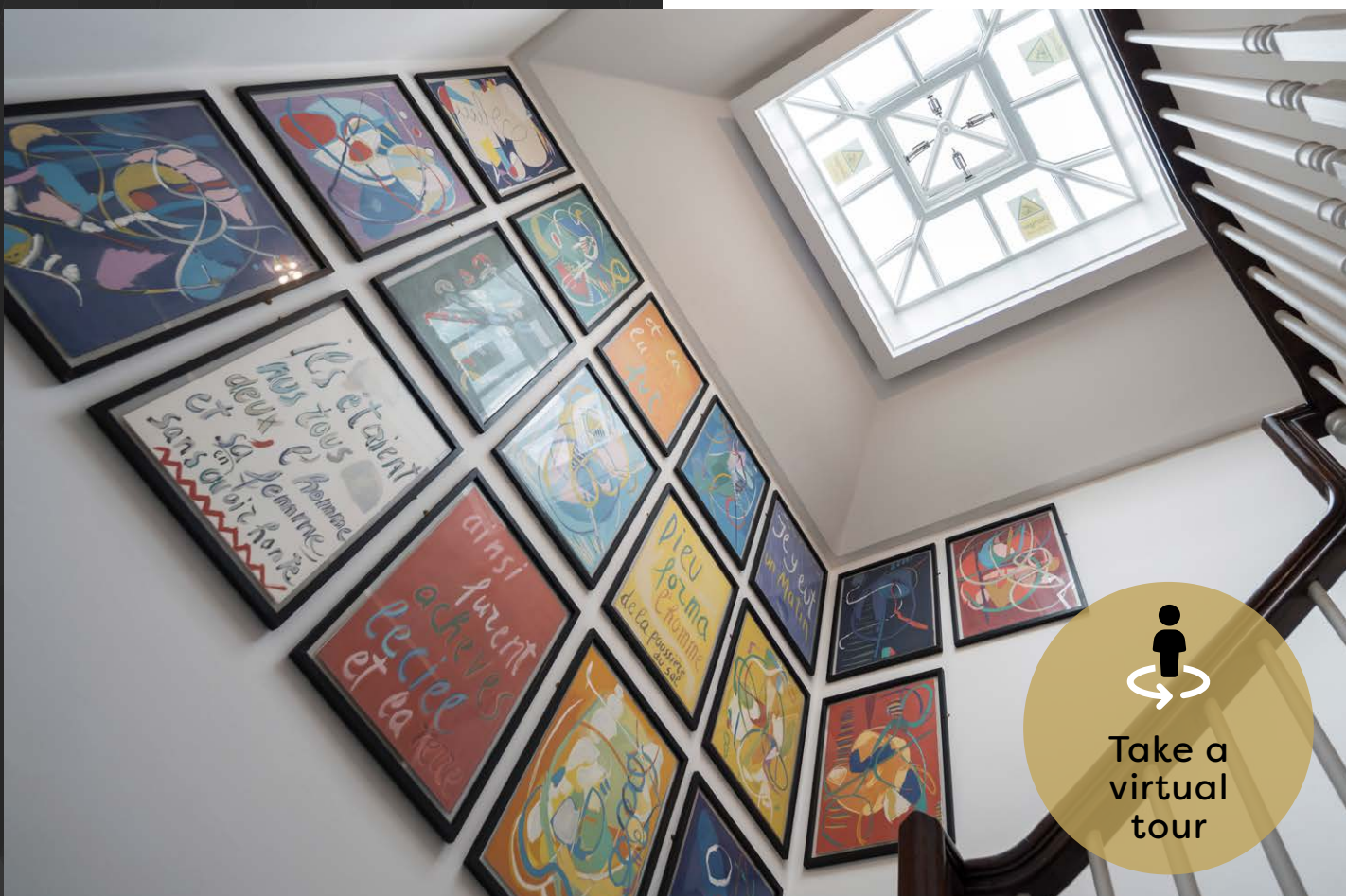
1,337 – 9,219 sq ft office space to let

St James's / SW1

High quality CAT A+ refurbished floors in London's most exclusive district

Perfectly positioned, 10-11 Park Place
is surrounded by tranquil spaces and
premium amenities, making it the perfect
working location.

The building has previously been re-developed
behind the retained period facade and offers
high quality, near column free, air conditioned
office floors. The upper floors are accessed via
a manned reception and the Ground floor is
self-contained with a private entrance.



Take a
virtual
tour





St James's / SW1

Specification



High quality CAT A+ refurbished floors



Air Conditioning



New LED lighting



Commissionaire/
security



Showers



Fibre



Raised floors



Passenger lift



Accommodation

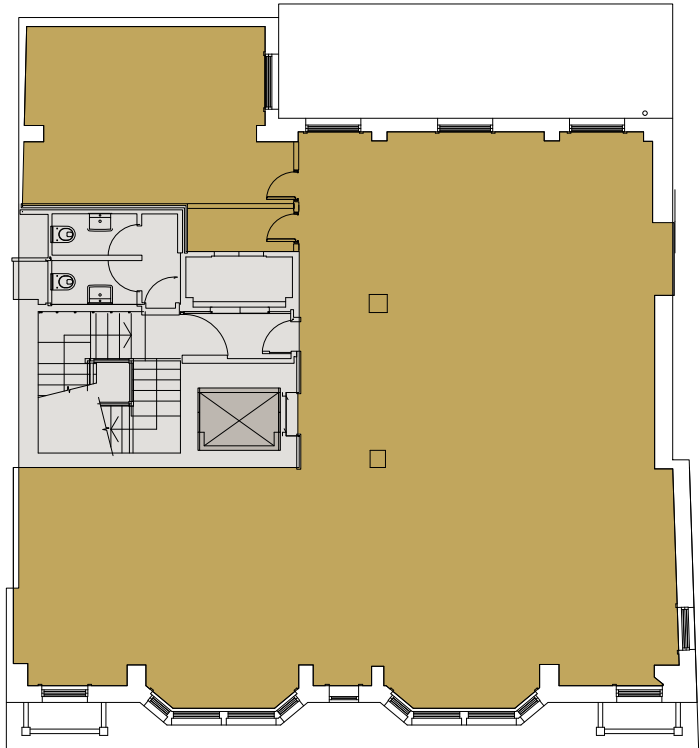
| Floor | Sq Ft | Sq M |
|----------------|-------|-------|
| Fourth | 1,037 | 96.6 |
| Third | 1,611 | 150 |
| Second | 1,679 | 156.3 |
| First | 1,679 | 156.3 |
| Ground | 1,337 | 124.2 |
| Reception | 300 | 27.9 |
| Lower Ground | 1,136 | 105.8 |
| Storage | 440 | 41 |
| Building total | 9,219 | 858.4 |

*The building is available as a whole or on a floor-by-floor basis

Lease

A new lease(s) is available for a term by arrangement, direct from the freeholder.

Typical Floor Plan



Park Place

Office Lift Core

Plans are for indicative purposes only, not to scale.



1,337 – 9,219 sq ft office space to let

A prime St James's location, with the very best restaurants, bars and retail offerings.

10-11 Park Place is situated just off St James's Street, in close proximity to the iconic Stafford Hotel and offers immediate access to the capital's finest hotels, restaurants and shopping facilities.

Connectivity

Transport links are excellent with Green Park (Piccadilly, Victoria and Jubilee lines) and Piccadilly (Bakerloo and Piccadilly lines) underground stations all within easy walking distance of the building. Alongside a plethora of cycle lanes and bus routes.



Green Park
3 mins walk

(Jubilee, Victoria & Piccadilly)



Piccadilly Circus
6 mins walk

(Bakerloo & Piccadilly)



Hyde Park Corner
9 mins walk

(Piccadilly)



Charing Cross
11 mins walk

(Bakerloo & Northern)



Leicester Square
12 mins walk

(Northern & Piccadilly)



Bond Street
13 mins walk

(Jubilee & Elizabeth line coming soon)



Further Information

Strictly by appointment through joint sole agents:

Ross Blanchflower

07734 365 141

ross.blanchflower@bdgsp.co.uk

William Ewing

07951 587 336

william.ewing@bdgsp.co.uk

BDGSP

EPC

Available on request.

Jonathan Stern

07880 740 511

jstern@mellersh.co.uk

Sammy Conway

07741 198 724

sconway@mellersh.co.uk

**mellersh
& harding**
020 7522 8500
www.mellersh.co.uk

BDG Sparkes Porter LLP nor Mellersh & Harding in their own right as agents for the vendor/lessor of this property draw your attention to the following: - these particulars provide prospective purchasers/tenants with only a general introduction to this property and do not form part of any offer or contract. These particulars are believed to be correct, but neither BDG Sparkes Porter LLP, Mellersh & Harding or the vendor/lessor accept responsibility for any error they may contain. These particulars are not to be relied upon as a statement or representation of fact and any purchasers/tenants must satisfy themselves as to their correctness by inspection or otherwise. Neither the agents, or any of their employees has any authority to give any further representation or warranty in relation to this property. All terms quoted are exclusive of VAT. 18. July 2021.

Designed & Produced by cre8te - 020 3468 5760 - cre8te.london