



ab

6

01483 300300



HILL CLEMENTS

www.hillclements.com

6



HAYMAN SO

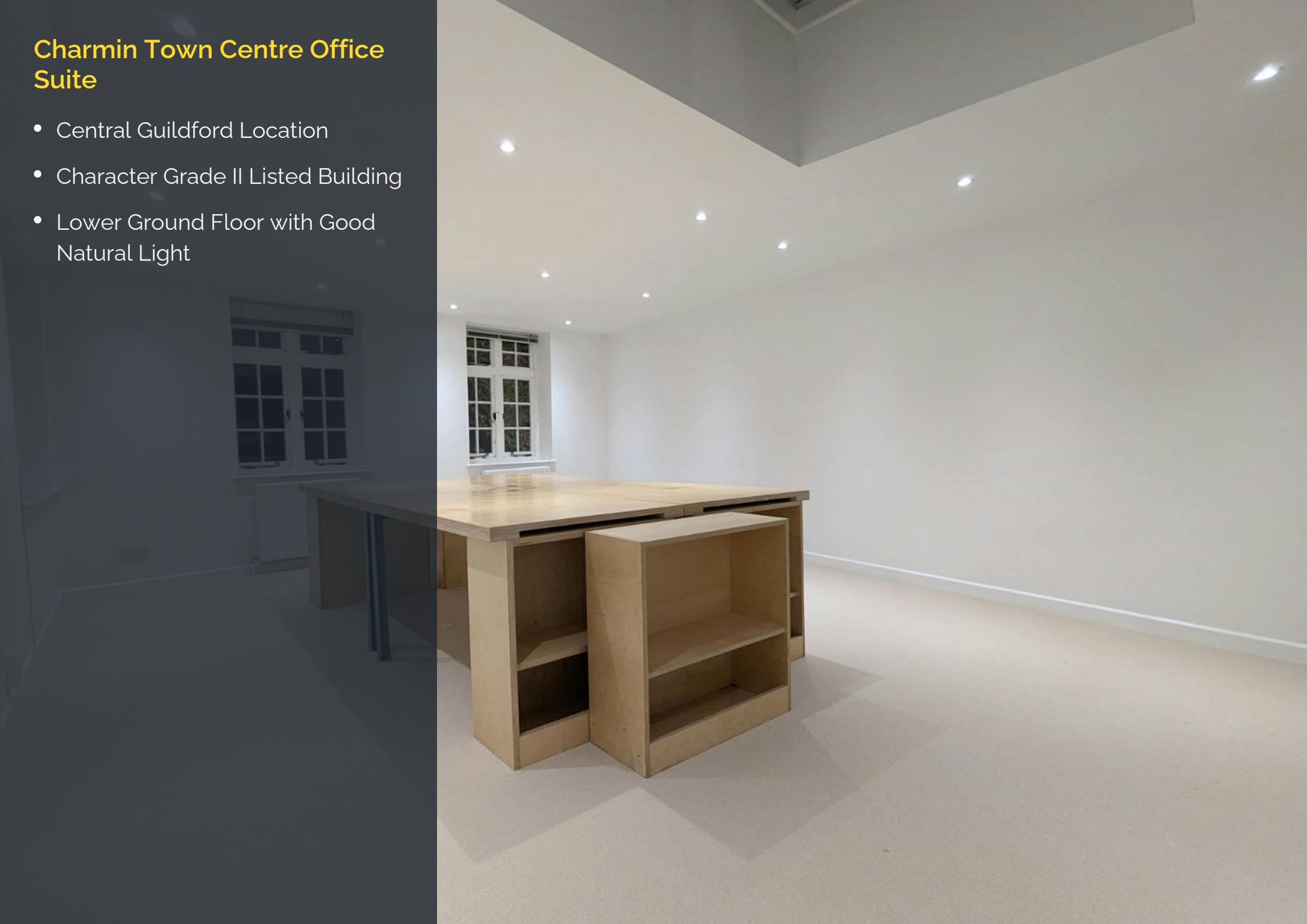
Owen
Isherwood
CHARTERED SURVEYORS

The Garden Suite, 6 Quarry Street, Guildford, GU1 3UR

TO LET | 483 SQ FT (44.87 SQ M)

Charmin Town Centre Office Suite

- Central Guildford Location
- Character Grade II Listed Building
- Lower Ground Floor with Good Natural Light



Location

The premises are in an excellent town centre location close to Guildford High Street. Quarry Street is an established business location approximately 10 minutes walk from Guildford mainline station.

Access into the office is from Rosemary Alley, just off quarry Street.

Description

The accommodation comprises an open plan office suite occupying the lower ground floor. The office has its own private entrance, plenty of natural light, gas central heating and dimmer LED lighting. There are shared kitchen and WC facilities available.

Accommodation

Name	sq ft	sq m	Availability
Lower Ground	483	44.87	Available
Total	483	44.87	

Terms

New Lease

Rent

£1,150 per month Inclusive of service charge and utilities. Exclusive of telecoms and business rates.

Rates & Charges

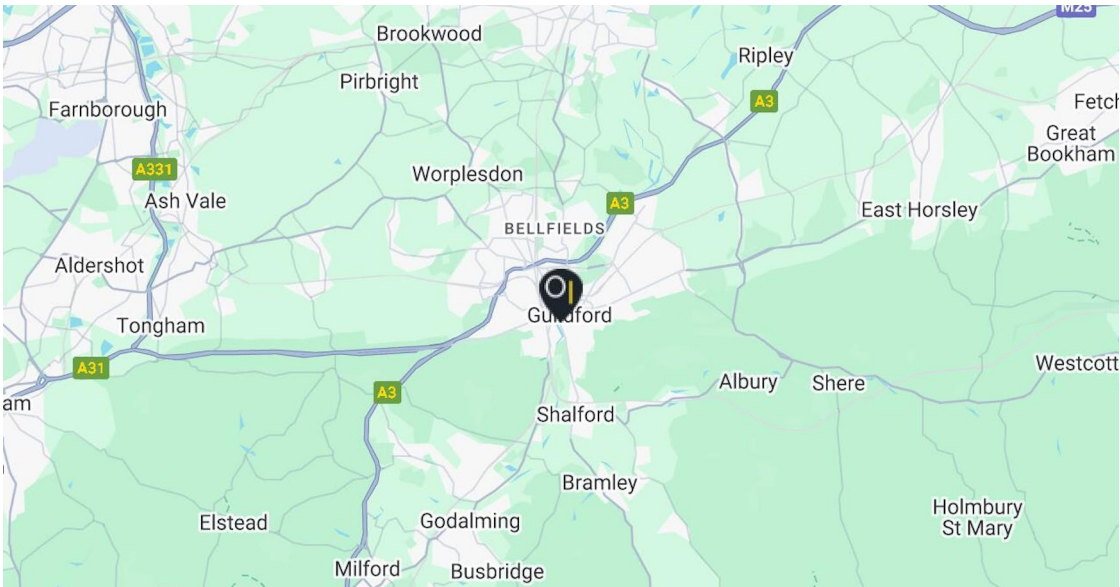
Rateable value: £3,900
Rates payable: £1,946.10 per annum 100% Small Business Rates Relief should apply for Eligible Occupiers.

EPC

D (83)

Legal costs

Each party to bear their own legal costs incurred in the transaction.



Contact

Sean Bellion-Carey
T: 01483 300176
M: 07811 343109
E: sean@owenisherwood.com

Charlie Williams
T: 01483 300 176
M: 07456 899972
E: charlie@owenisherwood.com

owenisherwood.com | 01483 300 176
1 Wey Court. Mary Road, Guildford, Surrey GU1 4QU

These particulars do not constitute, or form any part of, any offer or contract, and whilst all the information given is believed to be correct, all interested parties must satisfy themselves of its accuracy. All prices and rents are quoted exclusive of VAT, unless otherwise stated