

COME OLD JEWRY



AT BANK

SOA*

* Schedule of Areas



Retail (G & LG) 4,868 sq ft

Level	Function	Internal sq ft	Terraces sq ft
9	Pavilion	2,443	3,192
8	Office	6,346	
7	Office	6,232	1,000
6	Office	7,427	
5	Office	7,427	1,235
4	Office	8,848	
3	Office	8,848	
2	Office	8,901	
1	Office	8,740	
G	Reception	2,573	
Total NIA		67,785	5,427

* the above net internal areas have been estimated and will be verified on practical completion

Lower Ground

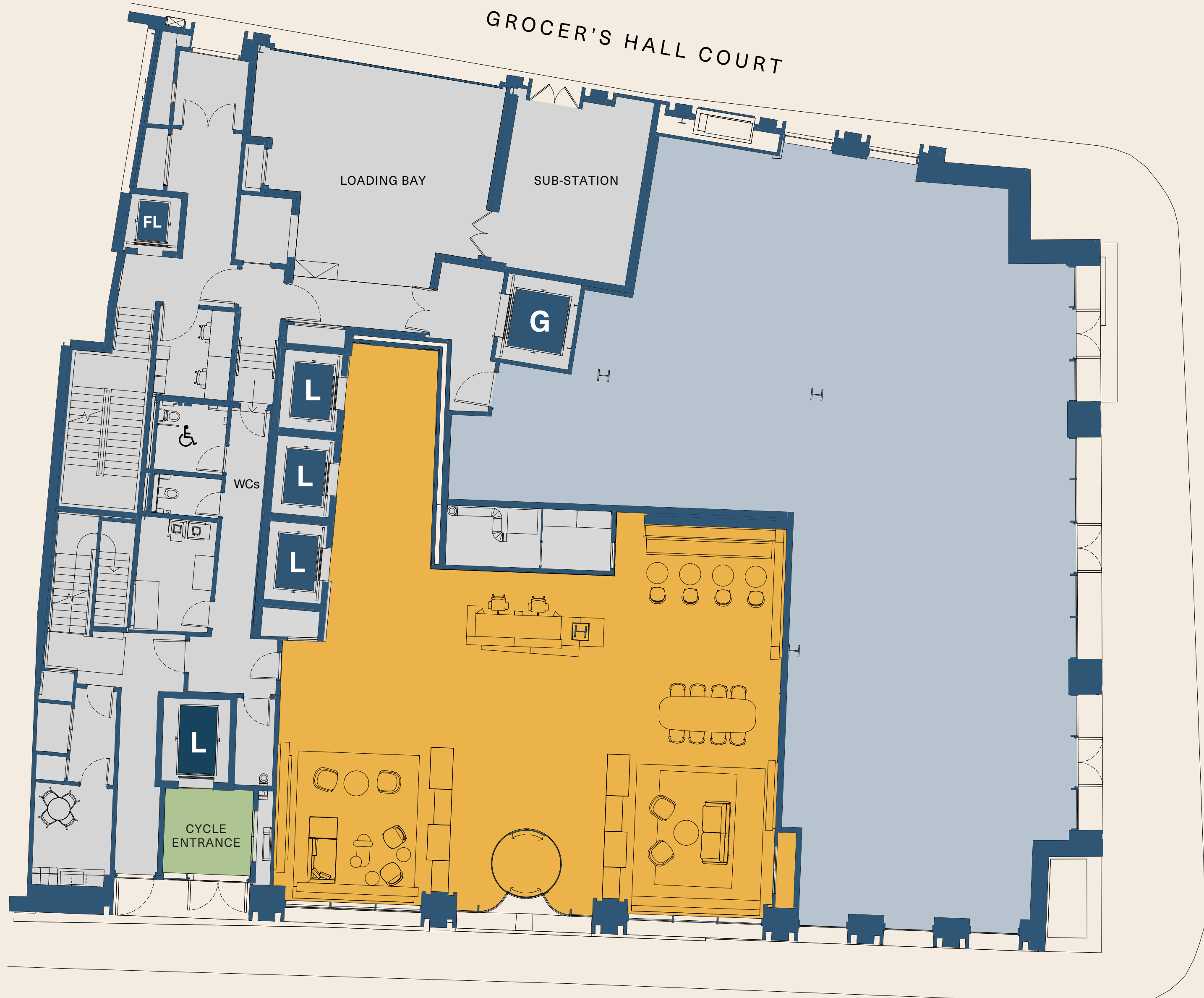


- END-OF-JOURNEY
- RETAIL 1,135 SQ FT

Ground Floor



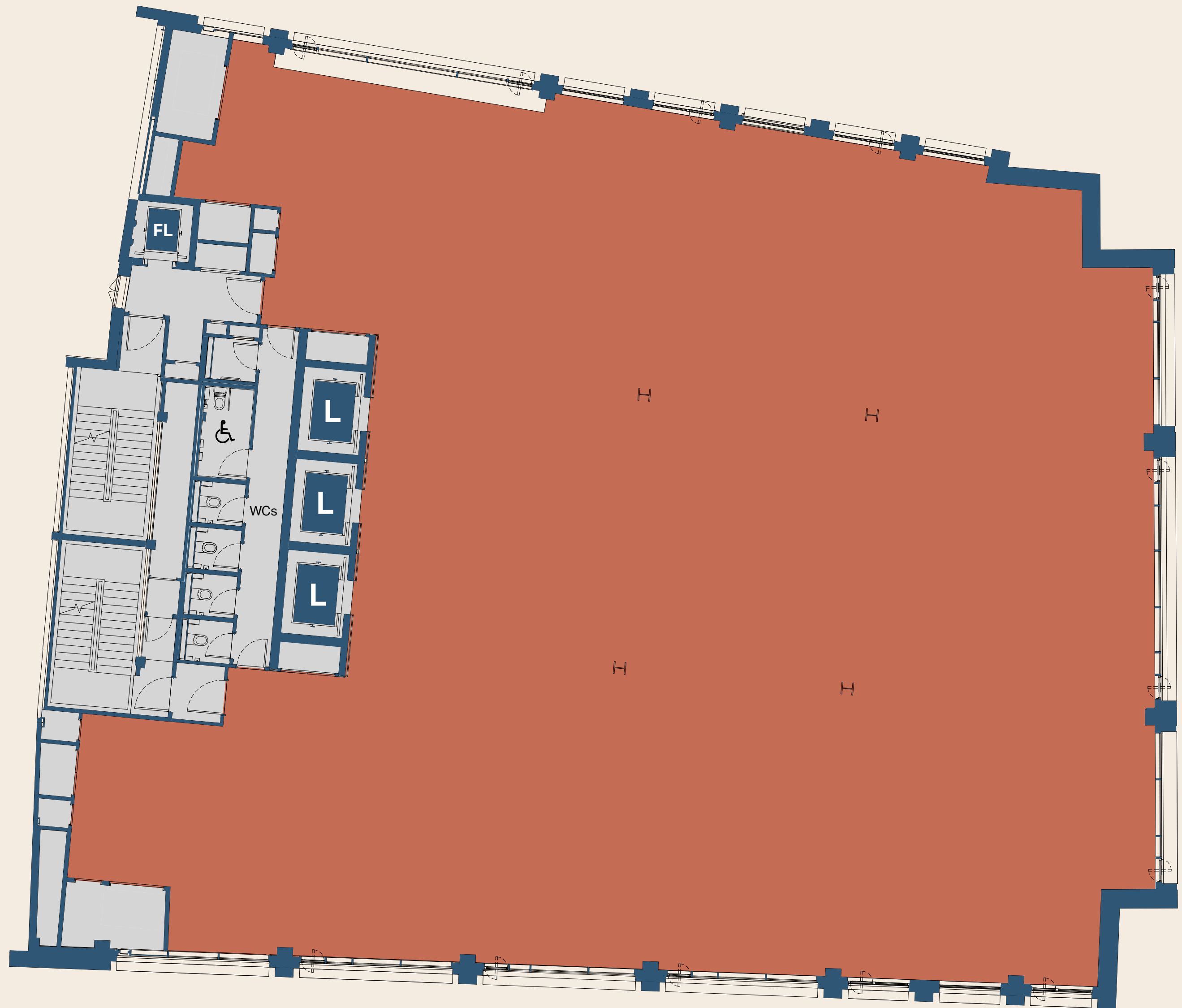
Reception
2,573 sq ft



- RECEPTION AREA
- END-OF-JOURNEY
- RETAIL 3,733 SQ FT

Level 1

8,740 sq ft

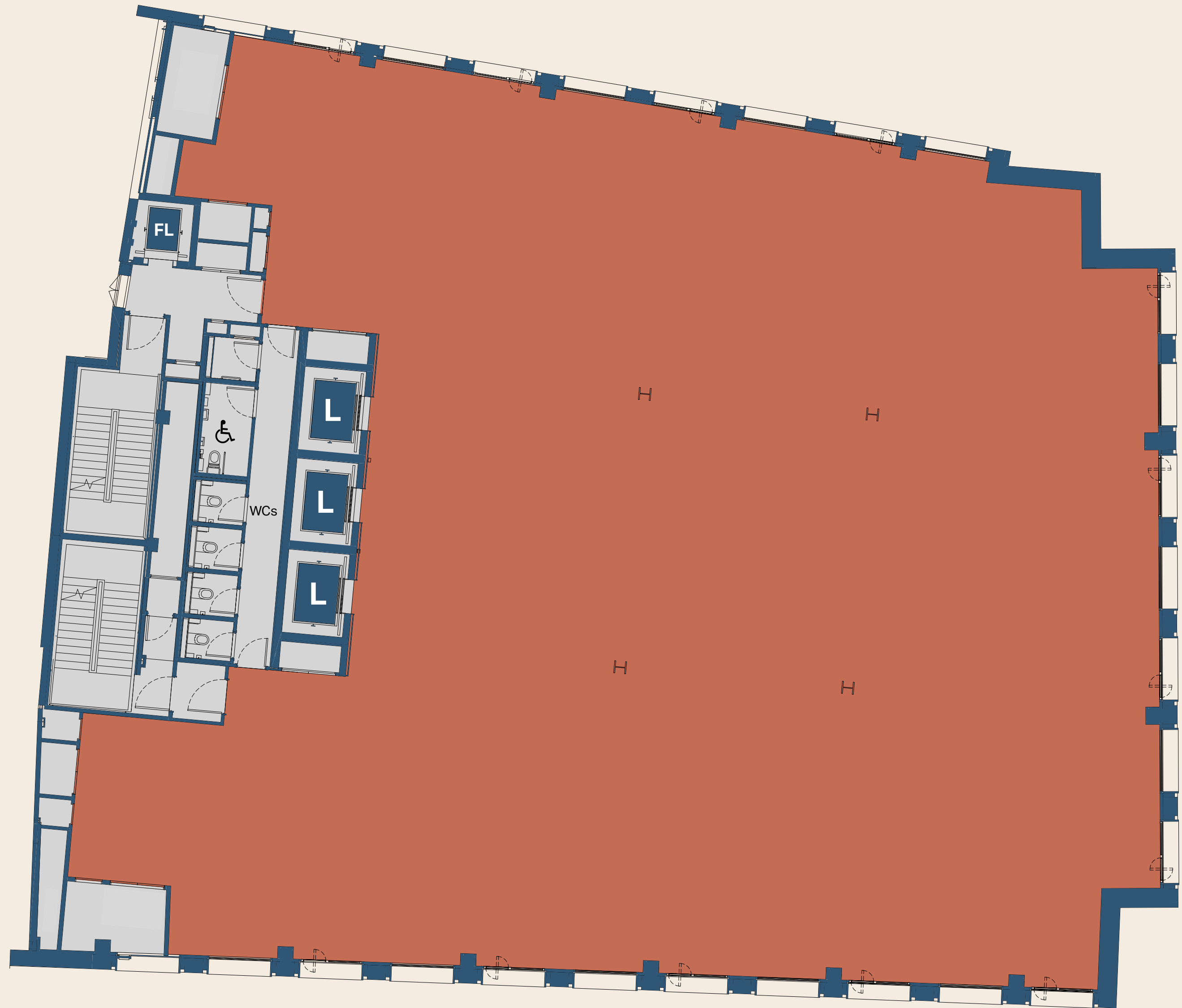


OFFICE

CORE

Level 2

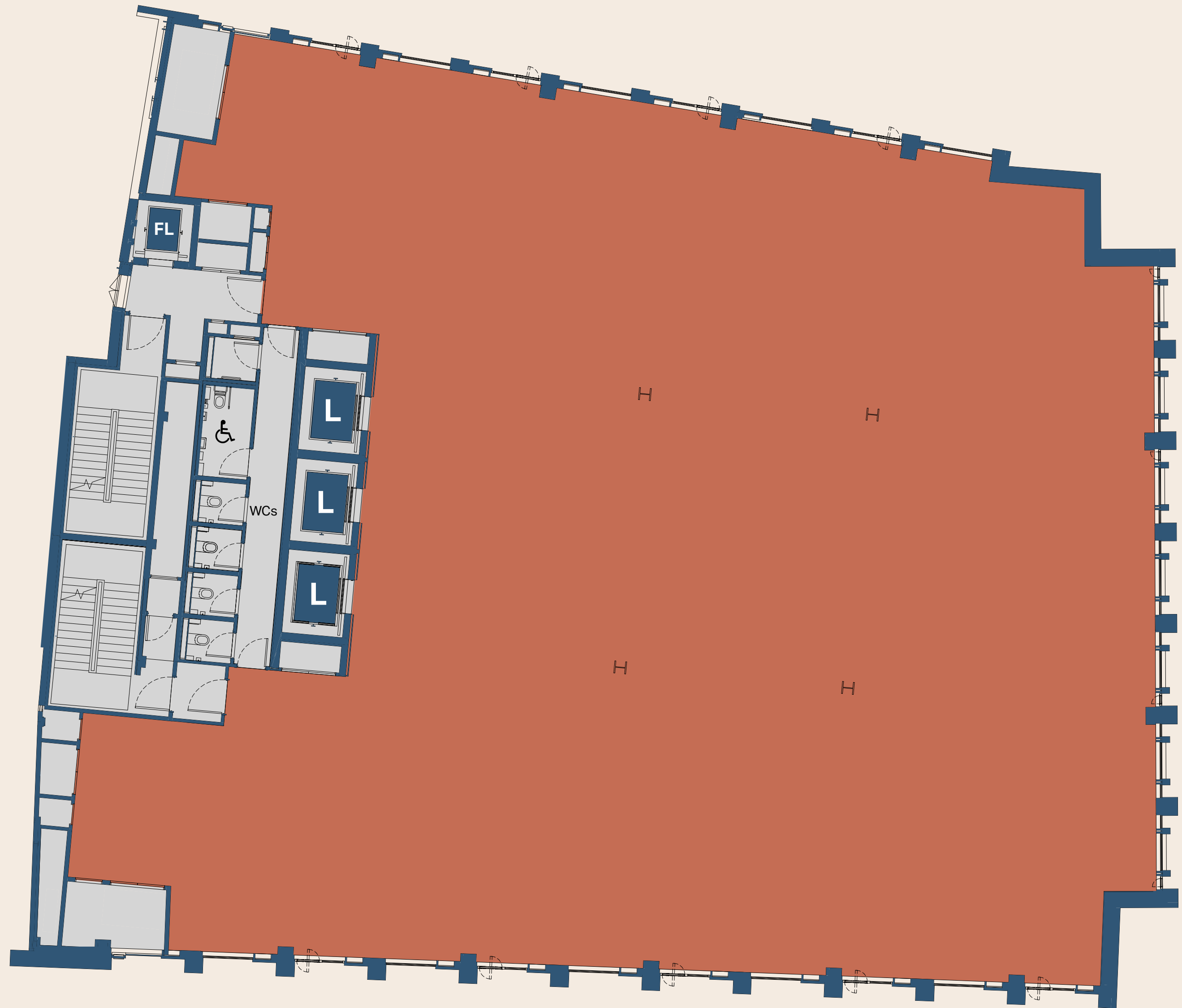
8,901 sq ft



OFFICE
CORE

Level 3

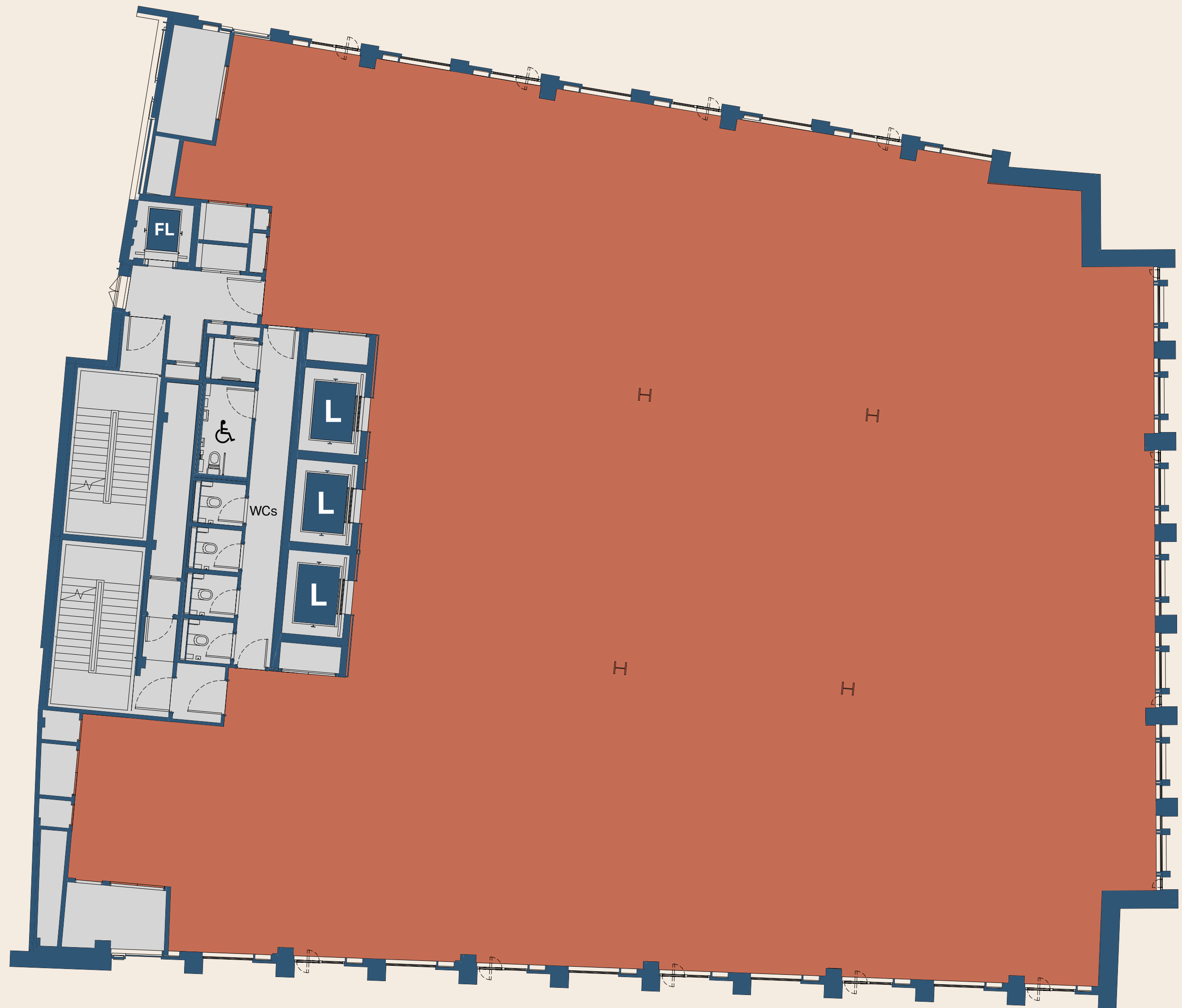
8,848 sq ft



OFFICE
CORE

Level 4

8,848 sq ft

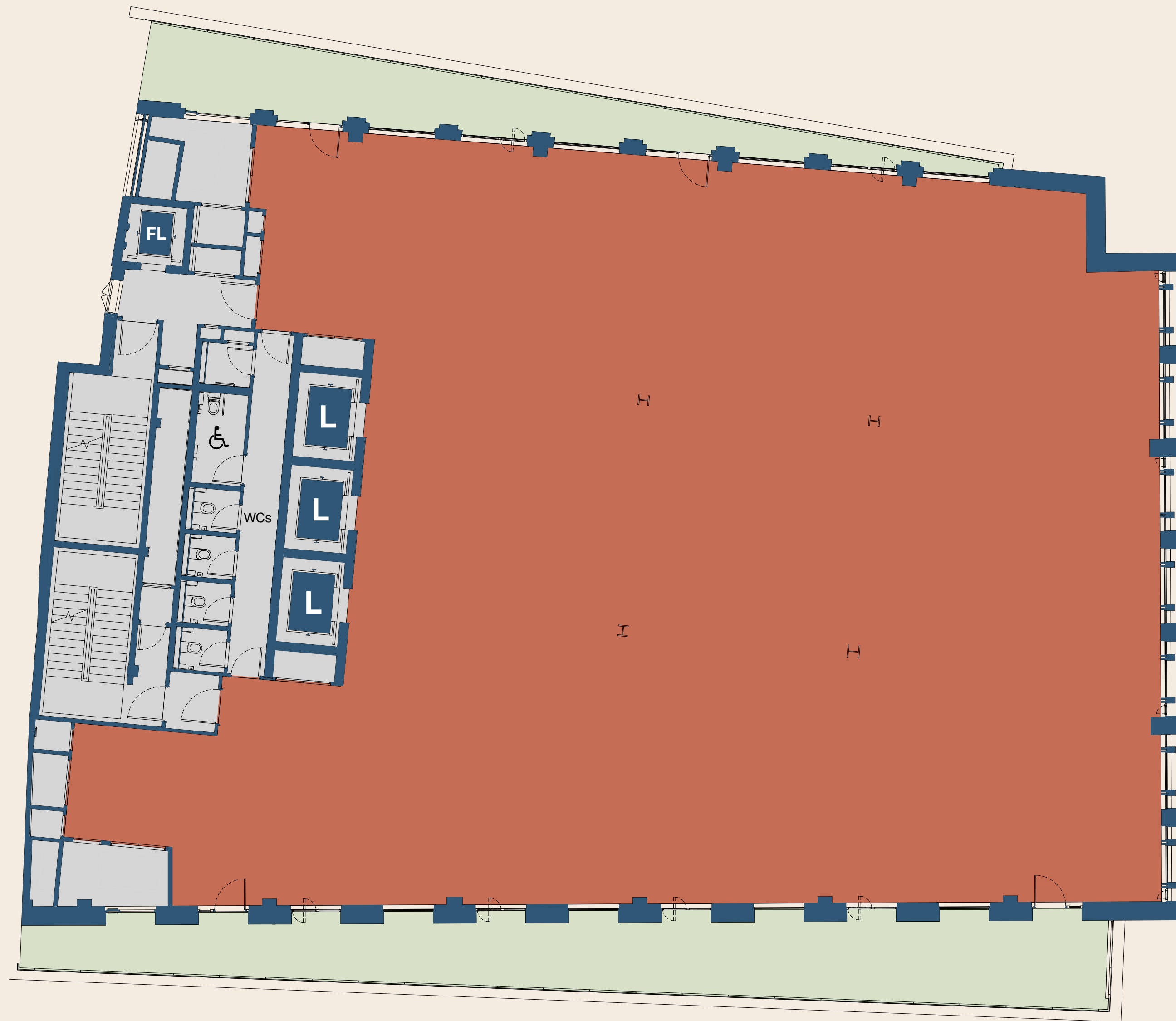
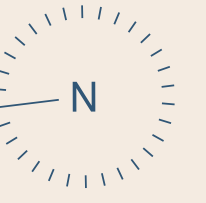



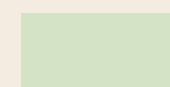
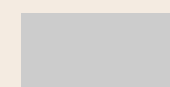
OFFICE

CORE

Level 5
7,427 sq ft

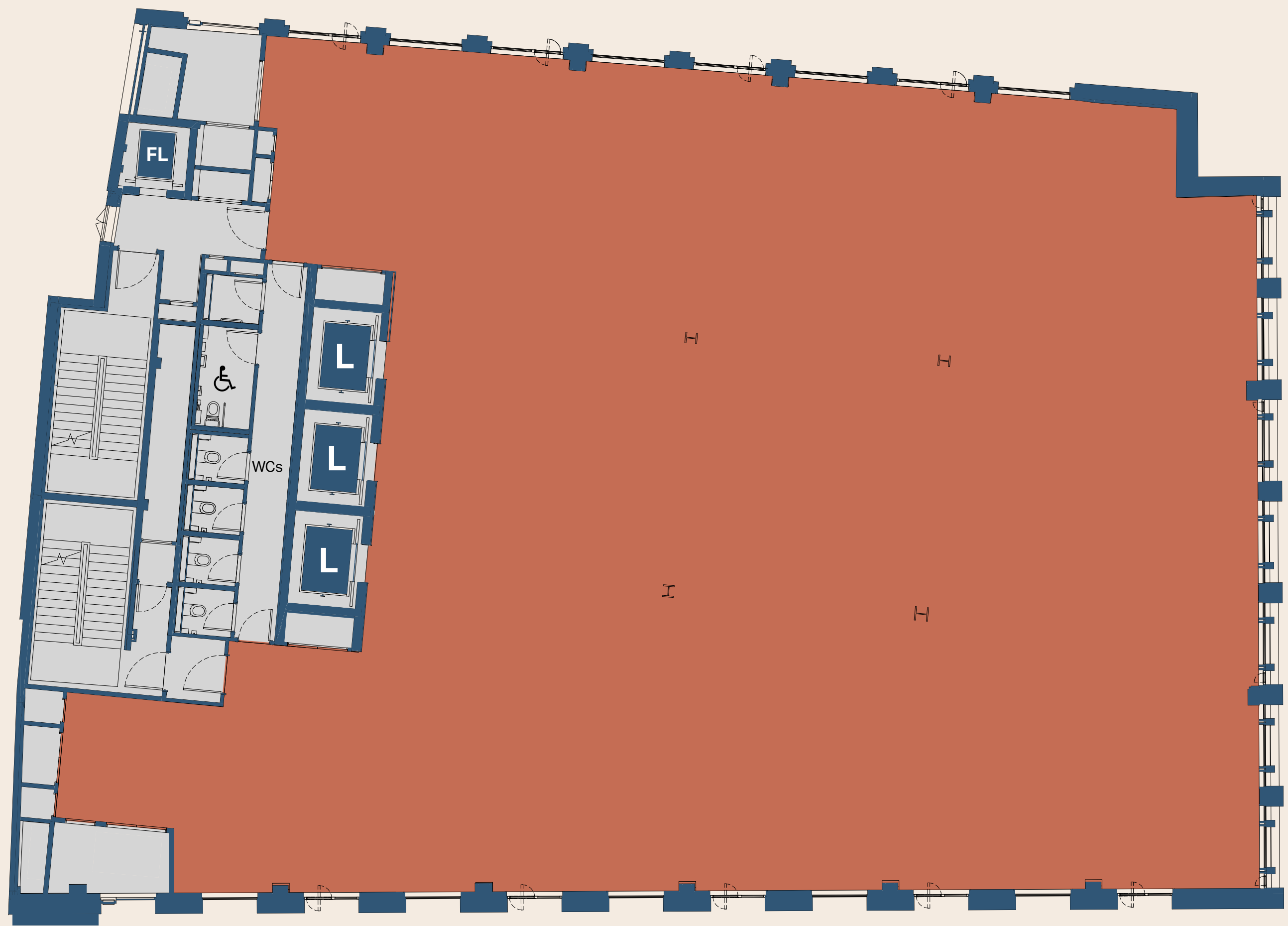
Terrace
1,235 sq ft


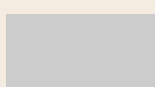


-  OFFICE
-  TERRACE
-  CORE

Level 6

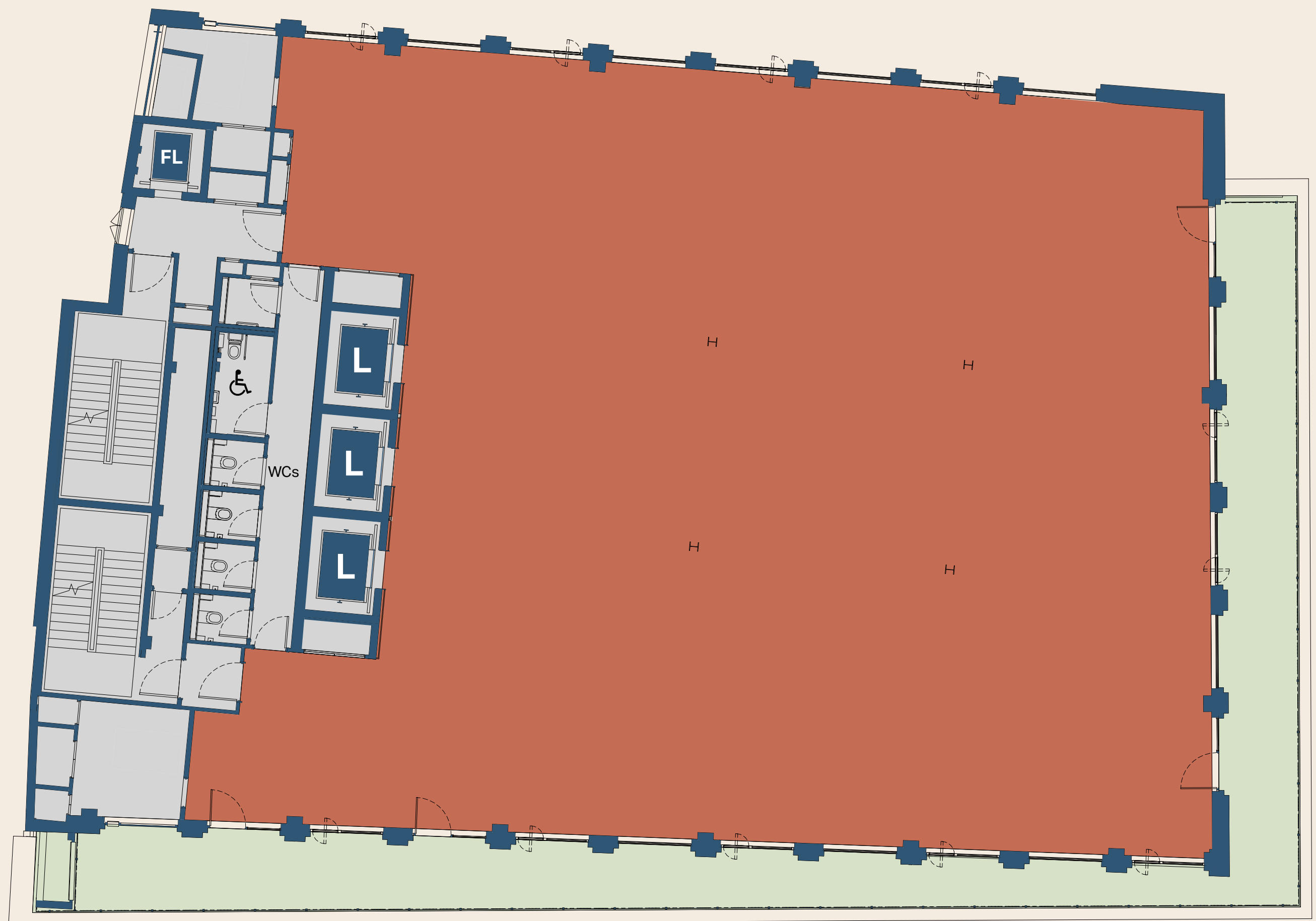
7,427 sq ft



 OFFICE
 CORE

Level 7
6,232 sq ft

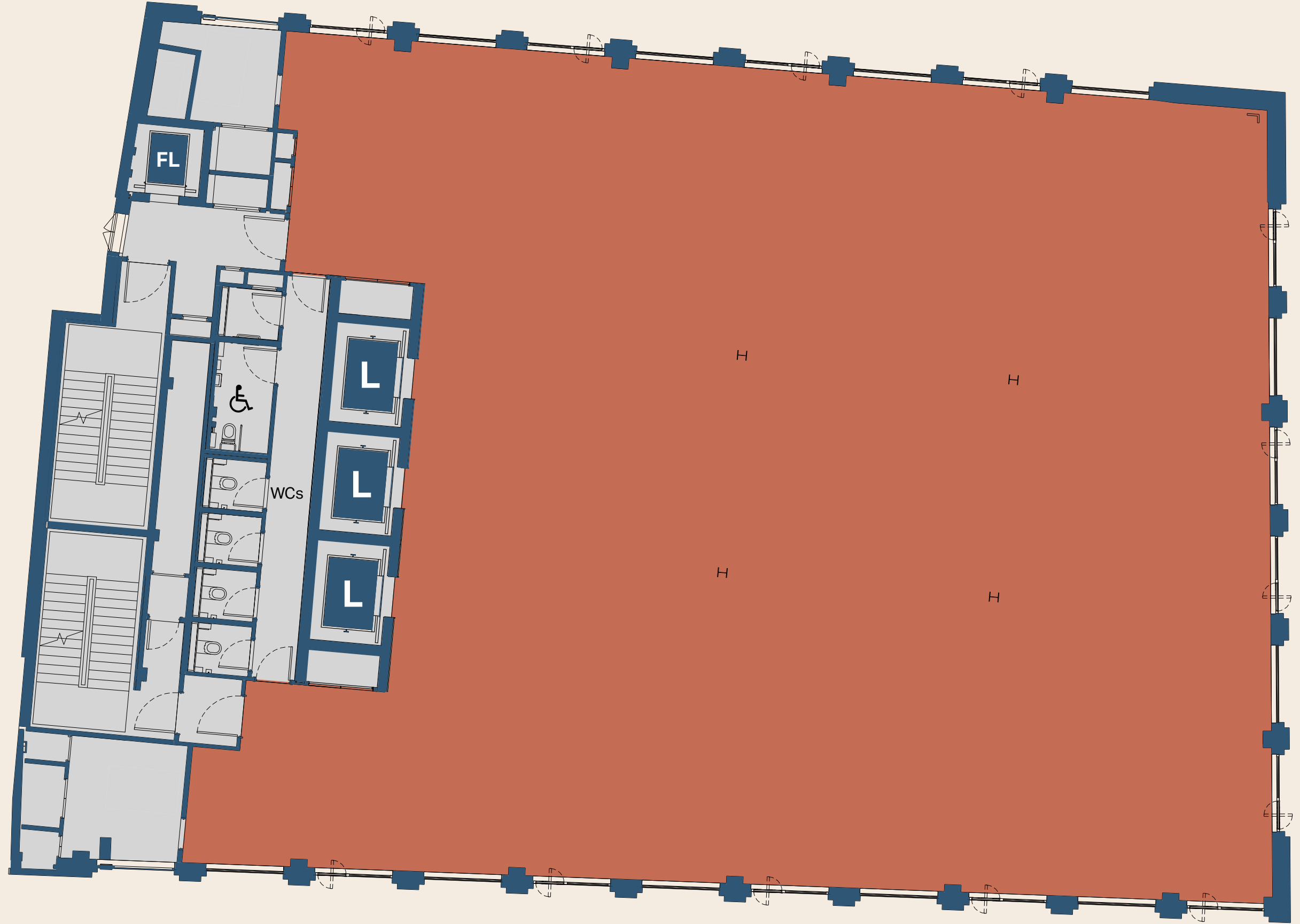
Terrace
1,000 sq ft



- OFFICE
- TERRACE
- CORE

Level 8

6,346 sq ft



OFFICE

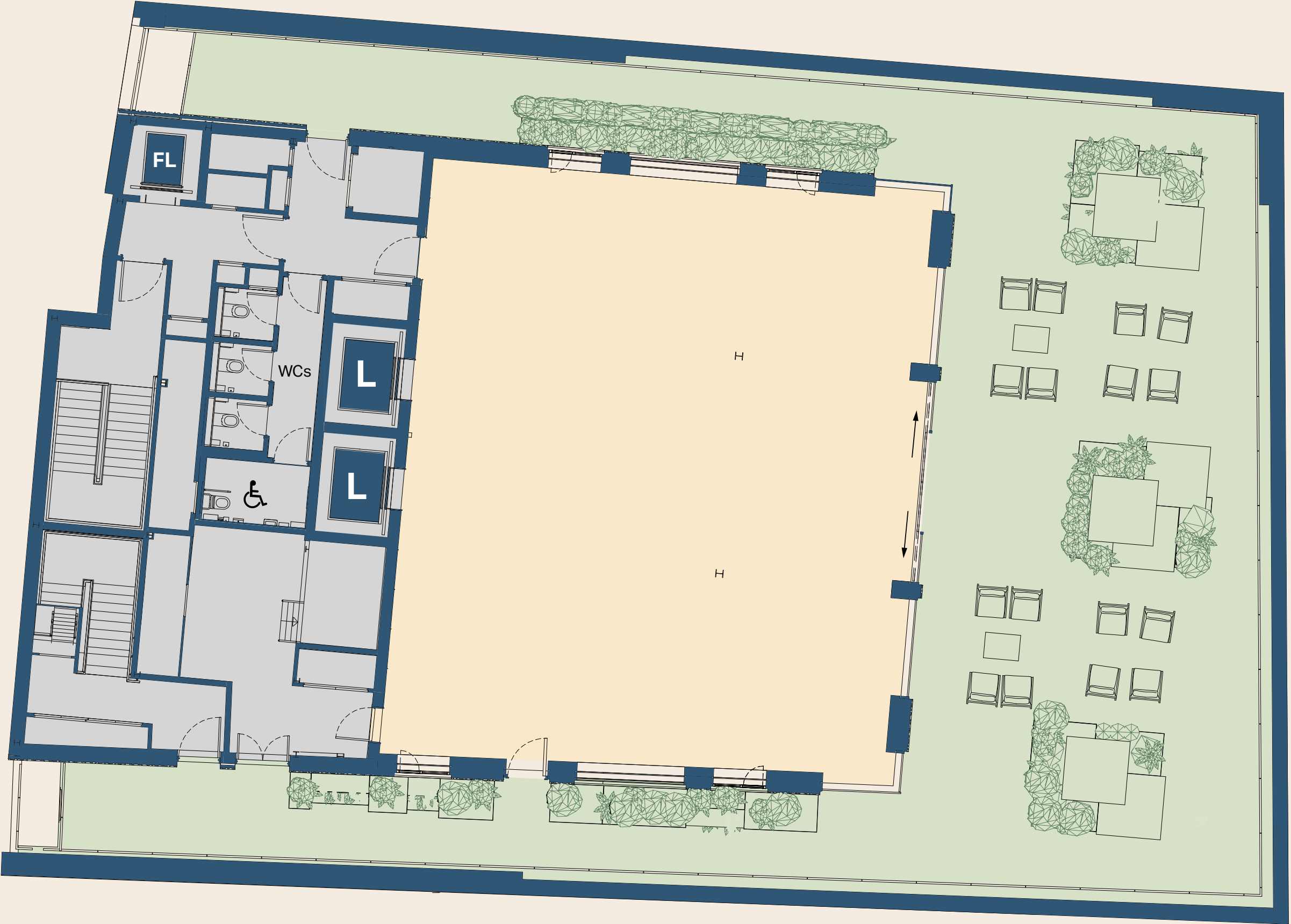
CORE

Level 9



Pavilion
2,443 sq ft

Terrace
3,192 sq ft



-  PAVILION
-  TERRACE
-  CORE