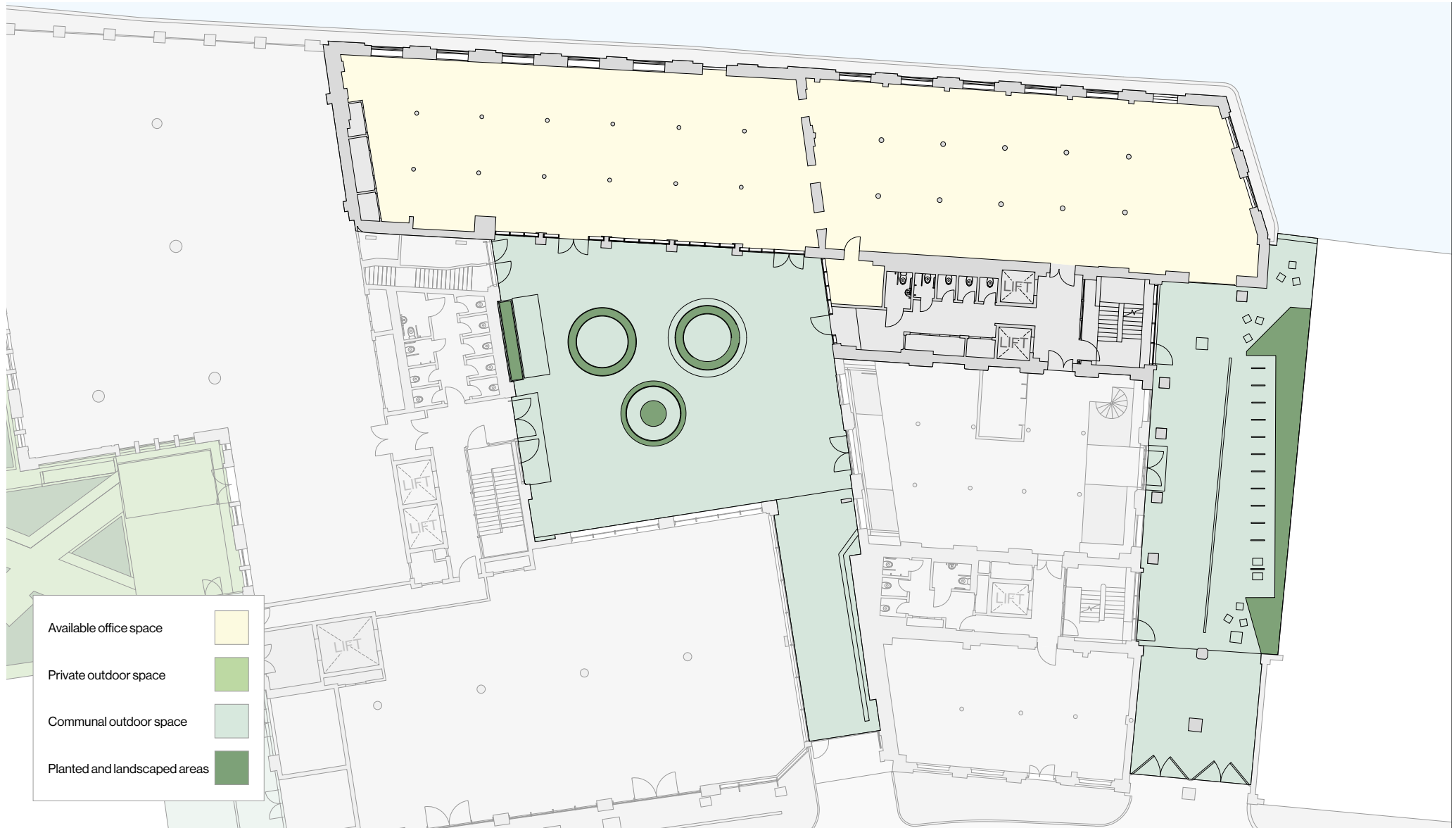
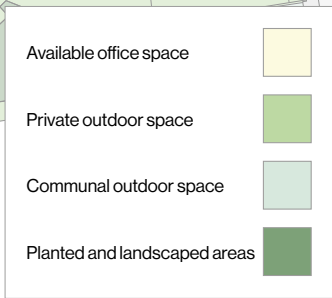


# THE CANAL BUILDING



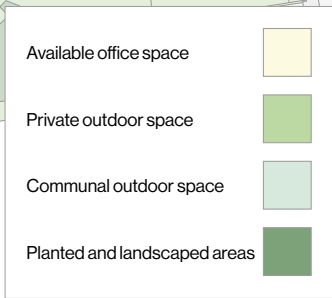
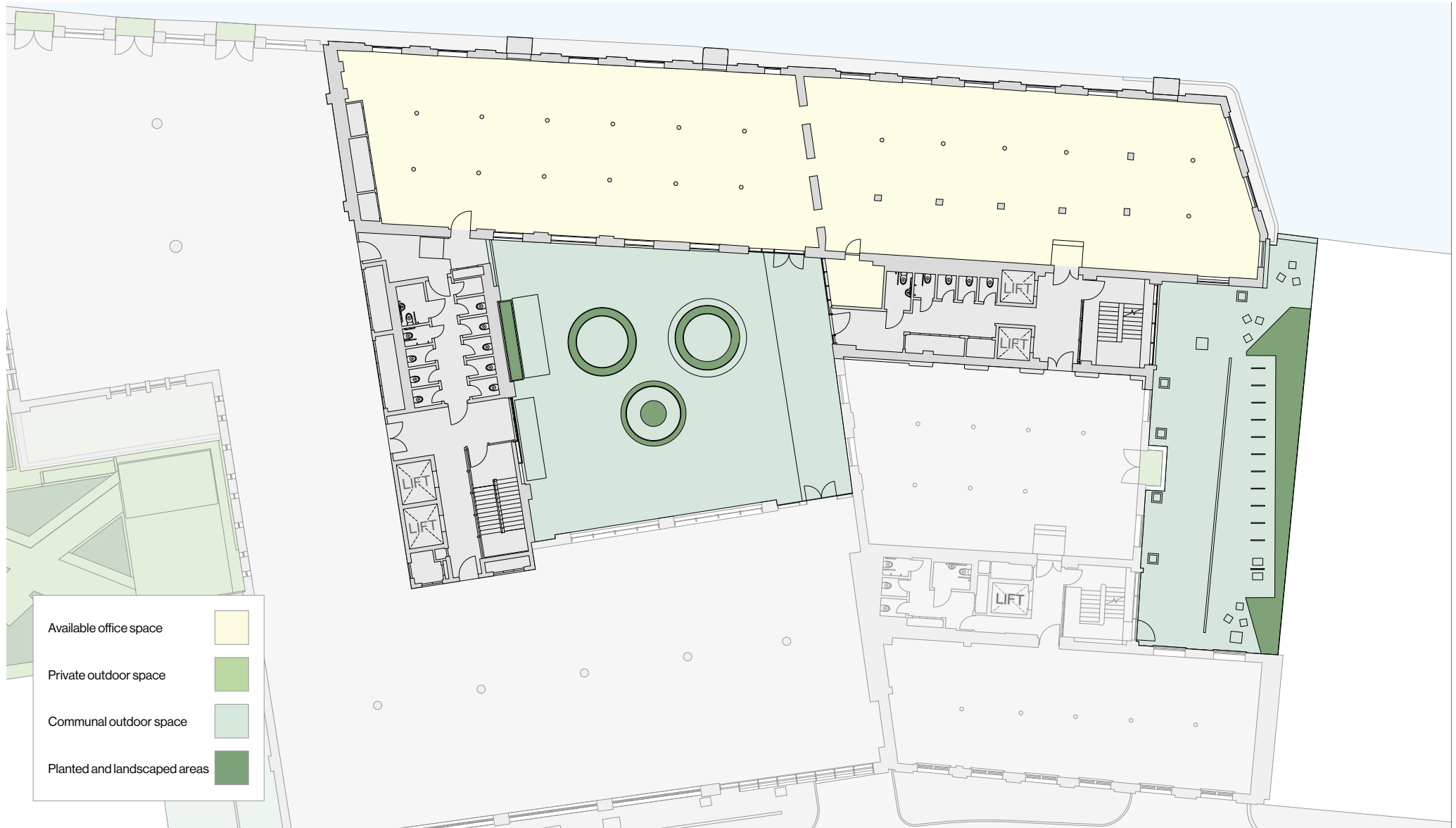
|              | Office Space           | Outdoor Space |
|--------------|------------------------|---------------|
| Ground Floor | 5,328 sq ft / 495 sq m | -             |

# THE CANAL BUILDING



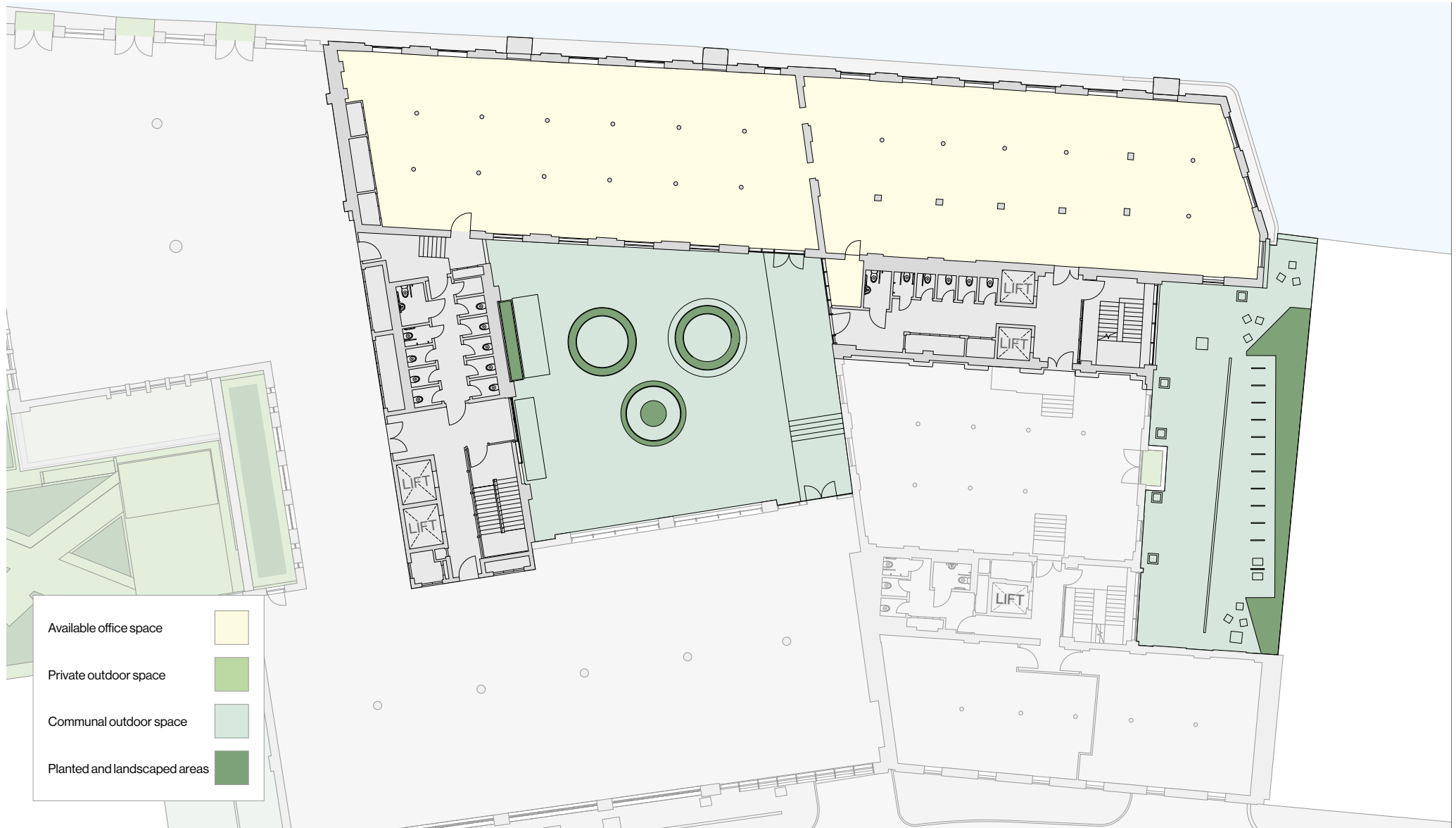
|         | Office Space           | Outdoor Space     |
|---------|------------------------|-------------------|
| Floor 1 | 5,382 sq ft / 500 sq m | 54 sq ft / 5 sq m |

# THE CANAL BUILDING



|         | Office Space           | Outdoor Space |
|---------|------------------------|---------------|
| Floor 2 | 5,414 sq ft / 502 sq m | -             |

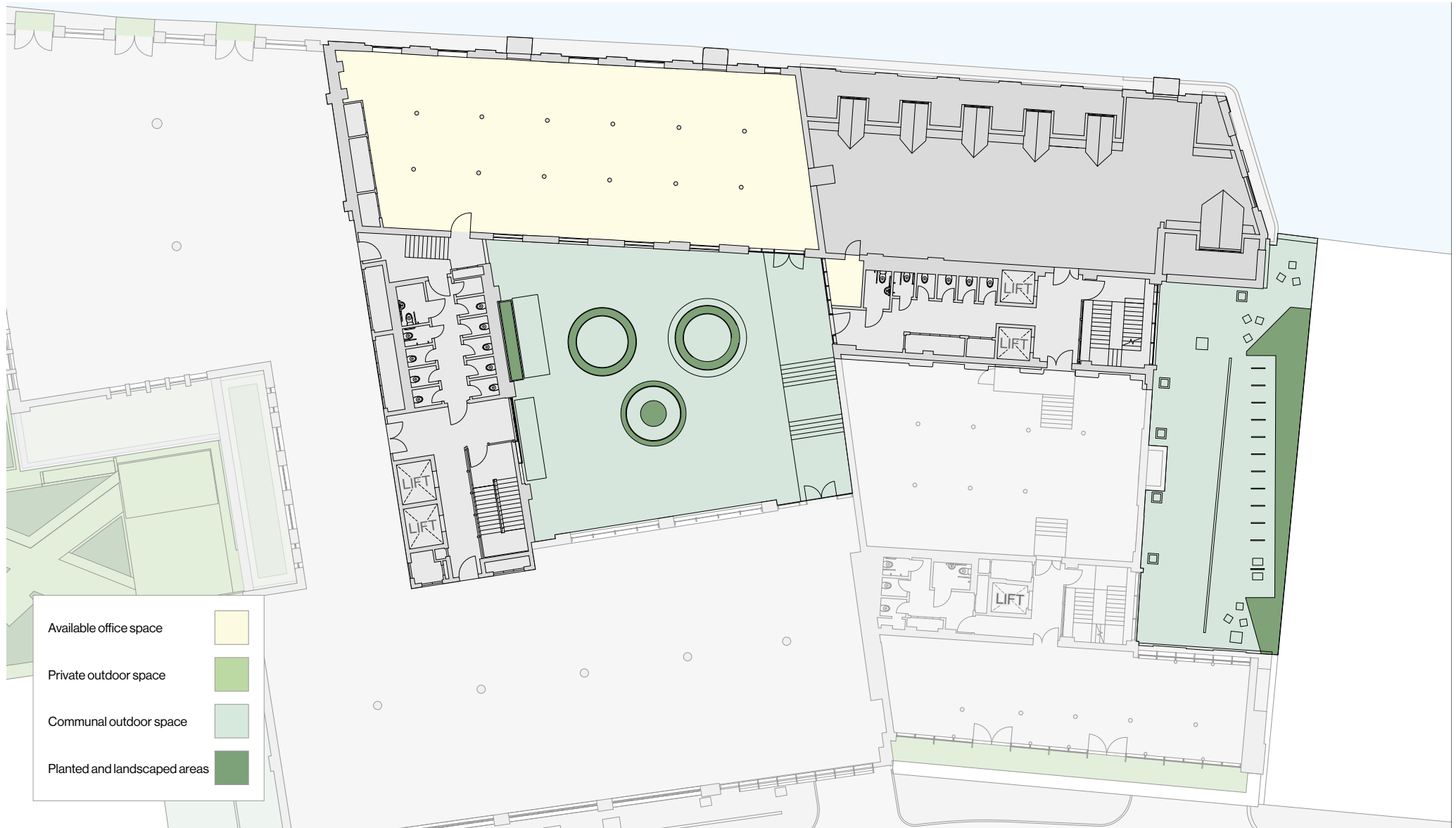
# THE CANAL BUILDING



- Available office space
- Private outdoor space
- Communal outdoor space
- Planted and landscaped areas

|         | Office Space           | Outdoor Space |
|---------|------------------------|---------------|
| Floor 3 | 5,350 sq ft / 497 sq m | -             |

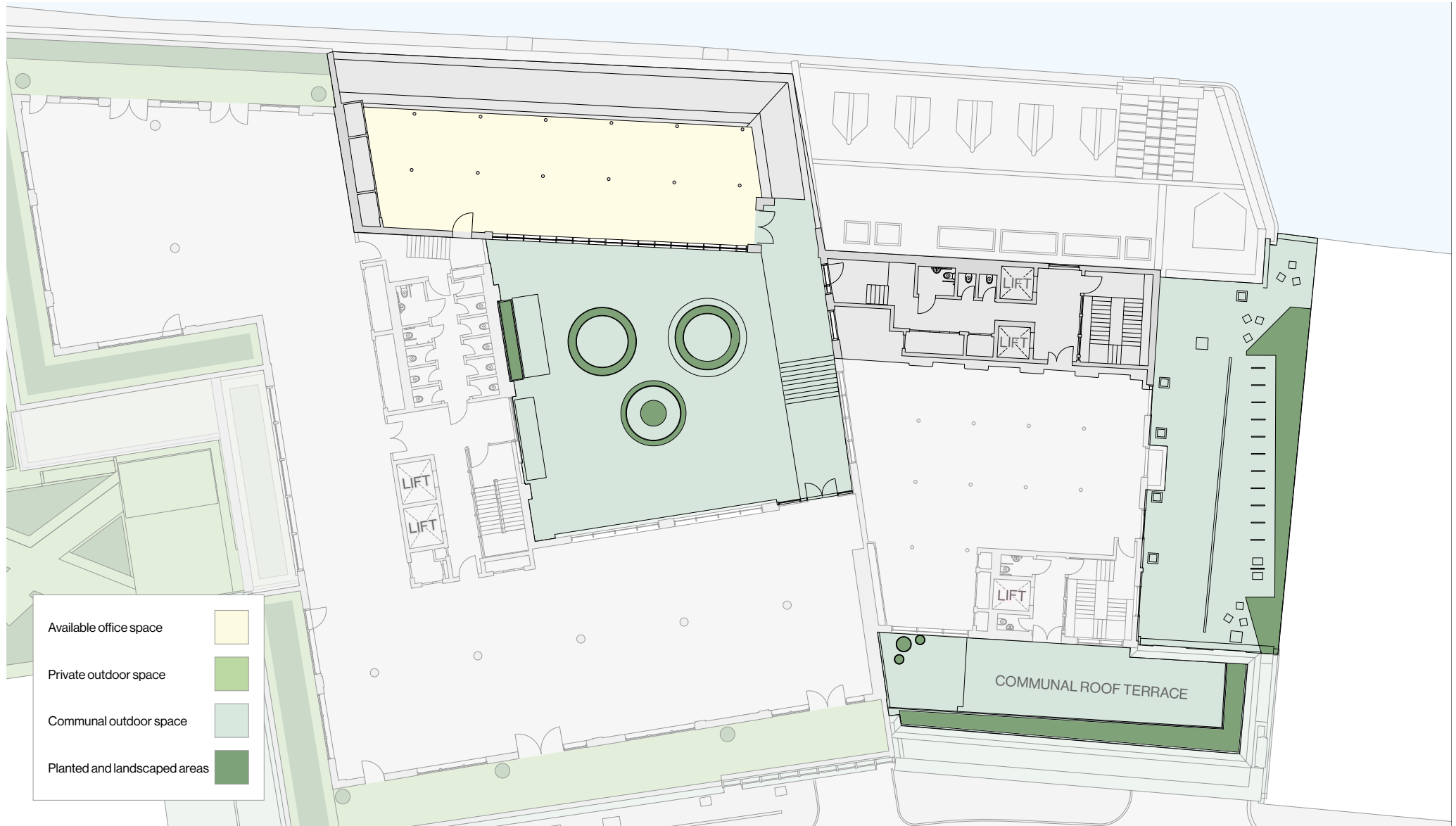
# THE CANAL BUILDING



- Available office space
- Private outdoor space
- Communal outdoor space
- Planted and landscaped areas

|         | Office Space           | Outdoor Space |
|---------|------------------------|---------------|
| Floor 4 | 4,876 sq ft / 452 sq m | -             |

# THE CANAL BUILDING



Available office space



Private outdoor space



Communal outdoor space



Planted and landscaped areas



|         | Office Space           | Outdoor Space |
|---------|------------------------|---------------|
| Floor 5 | 2,907 sq ft / 270 sq m | -             |