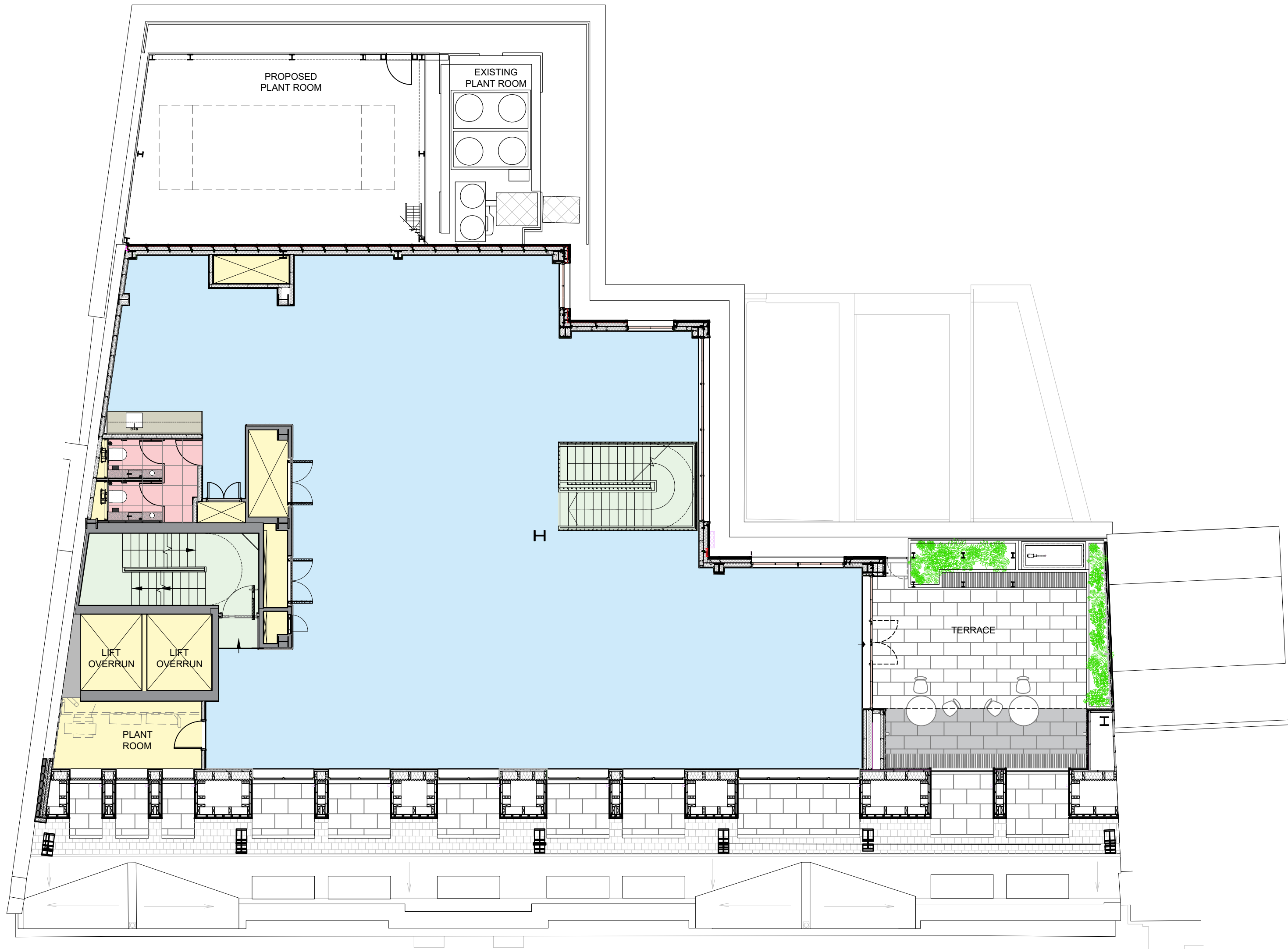


BOOTH'S PLACE

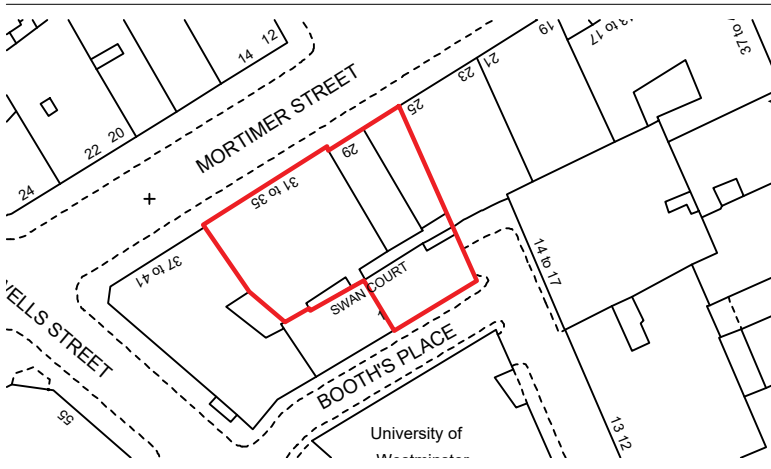


- KEY:
- Existing Walls
 - Class B1 - Business, raised access floor with cavity barriers
 - Circulation
 - Plant Room
Risers / Services
 - Welfare / Storage/ Utilities
 - Terrace
 - Proposed Walls

- Note:
- Existing retail tenant plant in new light grey louvered enclosure
 - New metal balustrade
 - New solid plant screen to new landlord's plant enclosure in light grey finish
 - Enclosure for existing flues
 - New stair linking 4th and 5th floors
 - Existing plant room. Allow for floor leveling, resin flooring, colour TBC.
 - New mansard roof with clay tiles to match existing
 - Schuco Janisol Arte window, top part is openable and the bottom is fixed.
 - PPC aluminium cladding to reveals of mansard recesses
 - Lead lined finish to base of mansard reveal and shallow parapet. Refer to detailed drawings.
 - New full height glazing with double doors to terrace, dark grey finish to framing
 - Full height dark grey zinc cladding panels
 - Full height glazing with dark grey framing- Schuco FW35 curtain wall with plant on 20mm glazing bars.
 - Mansafe system to specialist design, fixed on the wall structure.
 - AOV linked out to fire alarm - refer to M&E spec. NBS ref L10/491
 - Built-in planter with timber cladding
 - Built-in timber bench
 - New metal framed balustrade with fixed glazed screen to mansard openings
 - Light grey louvers to plant room to match windows
 - Porcelain tiling on proprietary support system with access for drainage maintenance.Suitable for exterior use
 - Access gate for maintenance. Single point anchorage required adjacent to gate (reach with gate closed)
 - Access ladder to roof plant.
 - Accessible timber mansard soffit for maintenance of the existing pipeworks.
 - M&E pipework running within mansard roof (high level), refer to M&E information.
 - M&E trays running below planter, along 5th Floor parapet and up through zinc cladding to plant, refer to M&E information.
 - New exposed steel column, refer to SE information.
 - Fire rated window.
 - Existing Sainsbury's pipework to be retained in accordance with M&E information.
 - Furniture client direct.
 - External wall mounted luminaires at terrace, OSLO 100 LED downlight in black finish by Astrolighting (Size: H100, W70, D100 mm), IP65 rated.Refer to M&E information.
 - New louvered plant screen enclosure to existing tenant plant in light grey finish
 - Existing single step. Appropriate contrasting nosing detail to be provided.

C4	Issued for Construction	PO	17.08.21
C3	Issued for Construction	PO	14.07.21
C2	Issued for Construction	PO	16.04.21
C1----	Issued for Construction	PO	15.03.21

Rev.	Description.	By	Date
------	--------------	----	------



Client
Orchard Street Investment Management LLP

Project
27 Mortimer Street

Title
Proposed Fifth Floor Plan

Status	Purpose of issue	RIBA stage
S2	For Construction	05

Project No.	Drawn	Checked	Scale	Rev.
1863	PO	TL	1:100 @ A1 1:200 @ A3	C4

Drawing No.
1863-BG-ZZ-05-DR-A-20.207

Do not scale from this drawing. The Contractor is to take and check all dimensions on site before work commences. Discrepancies must be reported to the Architect. Subcontractors must verify all dimensions on site before making a shop drawing or commencing manufacturing. This drawing is copyright. ©

© Copyright Barr Gazetas Ltd.
A 10 Heddon Street, London, W1B 4BG
T 0207 538 5581
W www.barrgazetas.com

01
20.207
Proposed Fifth Floor Plan
1:100@A1, 1:200@A3

MORTIMER STREET