

Shared Facilities

Made to move.

Contents

INTERACTIVE DOCUMENT

Click on the facility to take you to the relevant page.
Click [Contents](#) to return here.

01

Advanced Wellbeing
Research Centre

02

National Centre of
Excellence for Food
Engineering

03

Canon Medical
Arena

04

Steel City
Stadium

05

English Institute of
Sport Sheffield

06

iceSheffield

07

LivingCare Medical
Diagnostic Centre

08

Utilita Arena
Sheffield

09

UTC Sheffield
Olympic Legacy Park

10

Junior Cricket Pitch

11

junior parkrun

12

Outdoor City
Run Routes

13

Westfield Health
Active Space

14

Masterplan



As the home of world-class innovation in sport, health and wellbeing, Sheffield Olympic Legacy Park boasts a thriving cluster of leading academics and researchers, alongside a comprehensive range of state-of-the-art facilities and advanced technologies.

From Sheffield Hallam University's 3D movement analysis lab to LivingCare's 3T MRI scanner, the wider Park offers facilities and expertise allowing you to test theories, solve problems and bring new products to life with limited risk and low up-front investment.



Advanced Wellbeing Research Centre

A Sheffield Hallam University research centre dedicated to improving the health and wellbeing of the population.

- 500 sq m, 7.5m high indoor 3D movement analysis lab
- 3D morphology scanning lab
- Rapid prototyping and makerspace
- Design engineering and manufacturing workshop
- Human movement and performance lab
- Innovation accelerator with SME co-working facility
- Wearables lab
- Applied computing lab
- Physical activity suite
- Clinical floor
- NHS data security and protection toolkit compliant room
- 20 person executive boardroom
- 94 person executive lecture theatre
- 12 person meeting room
- 28 person Education and Training Hub

(+)

CONTACT

Email A.Brothwell@shu.ac.uk or visit www.shu.ac.uk/advanced-wellbeing-research-centre for more information.

VIEW VIRTUAL TOUR

<https://teaching.shu.ac.uk/hwb/techresources/projects/AWRC/AWRC.html>



National Centre of Excellence for Food Engineering

A Sheffield Hallam University research centre dedicated to healthy and sustainable innovations for the food system.

Collaborators have access to pilot-scale production facilities, laboratories, and workshops powered and controlled by a fully-equipped, industry-standard plant room.

Research & Innovation

- Open innovation space
- Food grade processing environment
- Pilot scale kitchen
- Design engineering and manufacturing workshop
- Housing for bespoke equipment for specific projects

Meeting & Collaboration

- 20 person executive boardroom
- 45 person flexible event space

Equipment & Services

- Braumeister - 200L pilot-scale brewery with fermentation tank and sensors
- Texture analyser TA.XT Plus C
- Spray dryer ProCepT
- Bioreactor InforsHT / Minifors2
- Combi oven Retigo ZE1011A
- Collaborative robot Universal Robot UR5E
- Protein analyser VELP - NDA 702
- Rheometer Anton Paar MRC302
- Single phase power - 240V, 110V
- Three phase power - 16Amp, 32Amp
- Compressed air - Class 1 filtered, 8bar.
- CleanAir fume cupboard
- Walk in freezer - -19°C (adjustable)
- Walk in fridge - 4°C (adjustable)
- Water supply - Hot 70°C, Cold 10°C, Cat5 16°
- Wash down facility

(+)

CONTACT

Email B.Portsmouth@shu.ac.uk or visit www.shu.ac.uk/national-centre-of-excellence-for-food-engineering for more information.

02

Canon Medical Arena

A community arena with multi-purpose sports facility that is home to the Sheffield Sharks and Sheffield Hatters professional basketball teams.

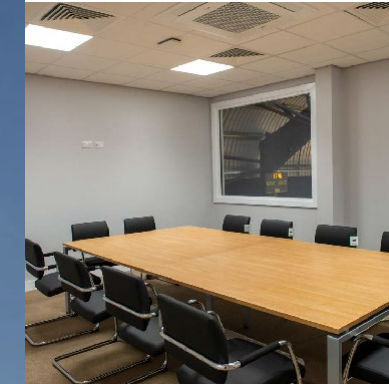
- 3 full-size basketball courts
- 100 person function room
- 12 person boardroom
- 15 person classroom

(+)

CONTACT

Email hello@parkcommunityarena.co.uk or visit www.parkcommunityarena.co.uk for more information.

(+)



03

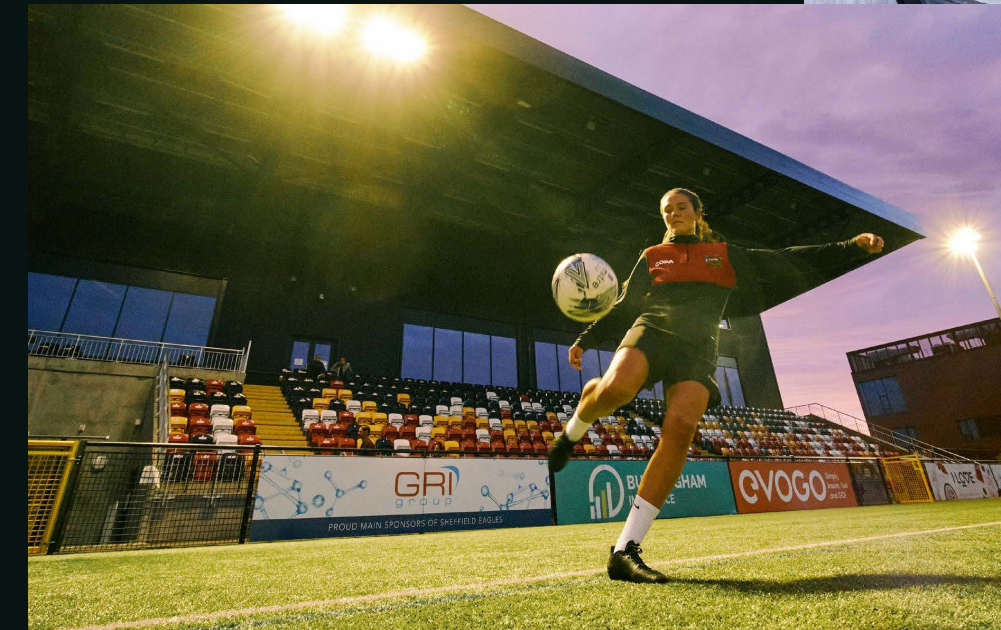
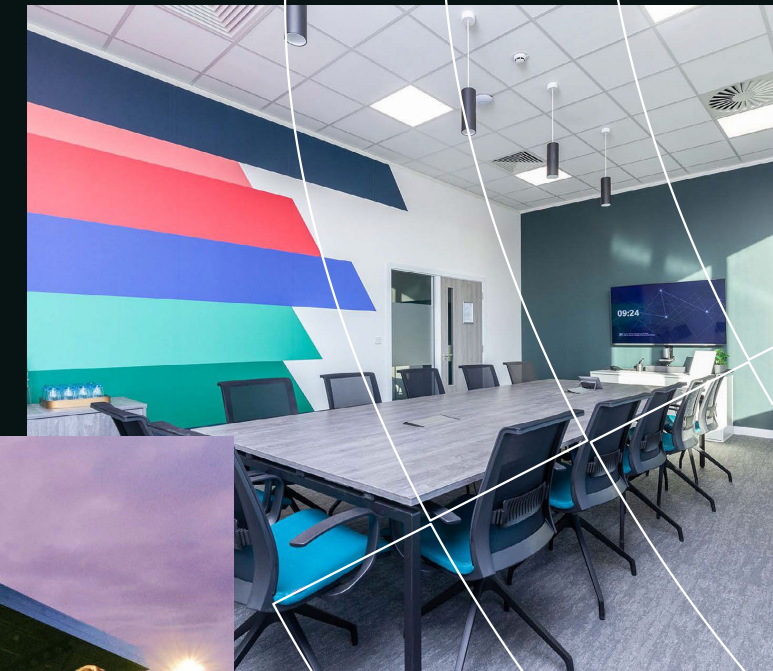
Steel City Stadium

[Contents](#)



A purpose-built stadium featuring a state-of-the-art 3G outdoor pitch with ancillary facilities and covered grandstand, alongside a high-quality, managed workspace environment.

- Full size 3G outdoor pitch (floodlit)
- Grandstand with capacity for 2,044 spectators (seating and standing)
- 6 person meeting room
- 14 person boardroom
- 36 person training room
- 4 co-working desks



(+)

CONTACT

Email hello@sheffieldstadium.com

04

English Institute of Sport Sheffield

The country's largest multi-sport training centre, dedicated to making sport accessible for all.

→ Basketball Hall

Usage options:

- 1 futsal court
- 1 basketball court
- 1 netball court
- 4 badminton court

→ Netball Hall

Usage options:

- 3 netball courts
- 3 basketball courts
- 2 futsal courts
- 12 badminton courts
- 2 volleyball courts

→ Gym

Weights gym and cardio gym split into two sides

→ Athletics Track

Indoor 200m track

→ Seminar Rooms

3 seminar rooms each
x 20 boardroom or
x 30 theatre style

Seminar rooms can be combined
to accommodate higher capacity

→ Athletes Lounge

x 20 boardroom
or classroom style

→ Multipurpose Hall

3 boccia courts and
a multi-use hall
Can be used for table tennis

→ Badminton Hall

3 badminton courts

→ Table Tennis Hall

3 badminton courts, or
1 netball court, or
1 volleyball court

(+)

CONTACT

Email Simon.Coates@sheffieldcitytrust.org or visit
www.sheffieldcitytrust.org/venues/eis-sheffield for more information.

[Contents](#)

(+)



05

iceSheffield

A Centre of Excellence for figure skating, ice dance and hockey.

- 2 Olympic-sized ice pads
- 100 person Glacier Suite function room
- 12 person board room

(+)

CONTACT

Email Shaun.Lough@sheffieldcitytrust.org or visit www.sheffieldcitytrust.org/venues/icesheffield for more information.

[Contents](#)



Exceeding expectations

06

LivingCare Medical Diagnostic Centre

A world-class diagnostic imaging
lab and research centre.

Contents

- 3T MRI
- CT
- Ultrasound
- X-Ray
- Imaging procedures
- Medical appointments
- Minor theatre procedures

(+)

CONTACT

Email Luke.Gorse@livingcare.co.uk or visit
www.livingcare.co.uk/canon-medical-arena for more information.



07

Utilita Arena Sheffield

[Contents](#)



The largest conference, exhibition and banqueting space in Sheffield.

- Theatre style from 2,135 to 12,860 seats
- Standing from 2,485 to 13,764 people
- Olympic size ice rink with seating up to 9,300



(+)

CONTACT

Email Dominic.Stokes@sheffieldcitytrust.org or visit www.utilitaarenasheffield.co.uk/ for more information.

09

UTC Sheffield Olympic Legacy Park

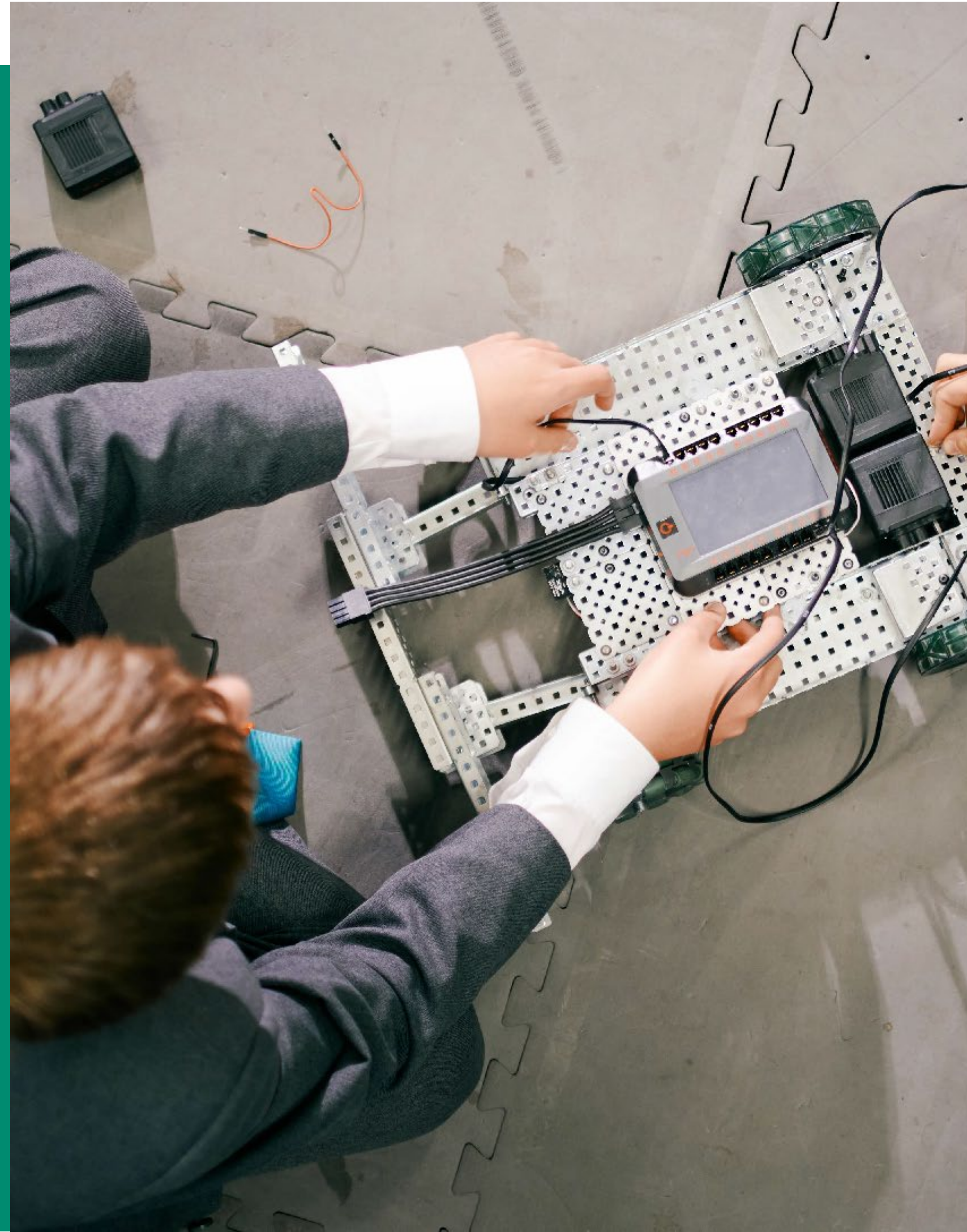
A purpose-built specialist academy and sixth form providing pathways in computing, health sciences and social care, and sport science.

Partnership opportunities available.



CONTACT

Email jstevenson@utcsheffield.org.uk or visit www.utcsheffield.org.uk/olp/ for more information.



Junior Cricket Pitch

Available to hire.

(+)

CONTACT

Email david.judge@sheffield.gov.uk for more information.



OTHER FACILITIES

junior parkrun

Every Sunday at 9am.
Free event.

(+)

CONTACT

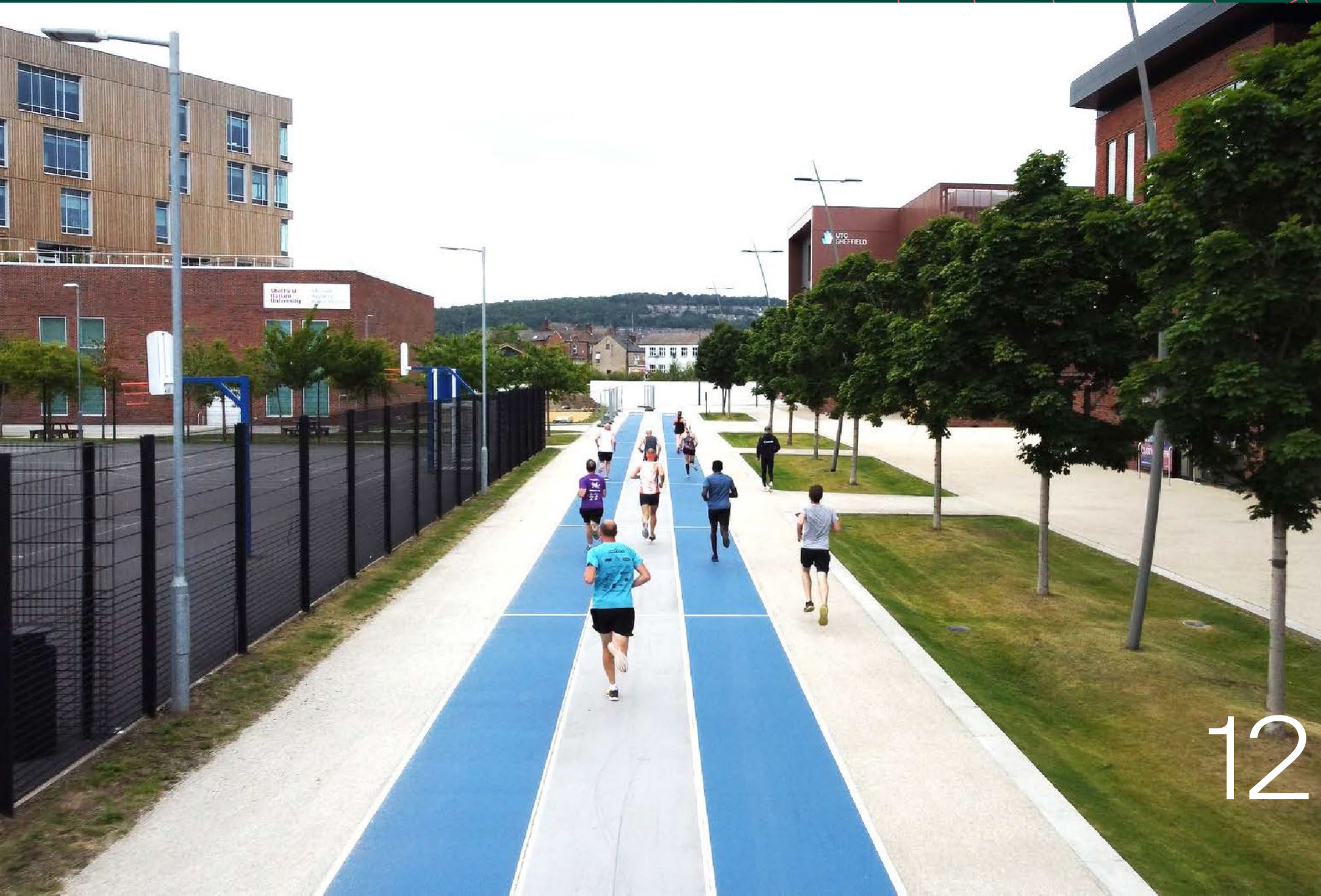
Email sheffielddolphjuniors@parkrun.com for more information.



Outdoor City Run Routes

The three Outdoor City Run Routes in and around the Park are part of a city-wide programme funded by England Athletics.

(+)

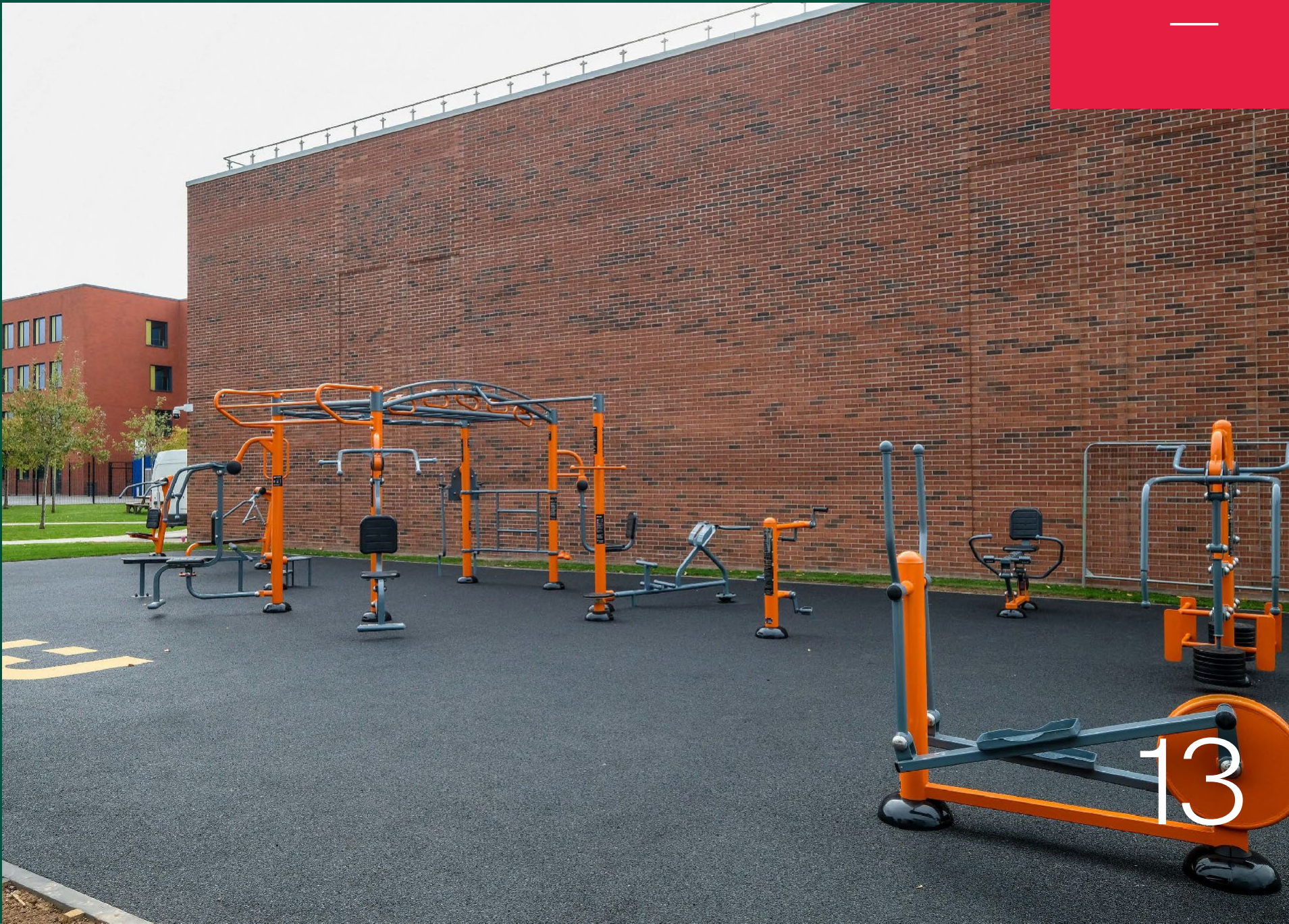


12

Westfield Health Active Space

An extensive range of Fresh Air Fitness accessible outdoor exercise equipment designed for building strength, developing cardiovascular fitness and improving flexibility, balance and co-ordination.

(+)



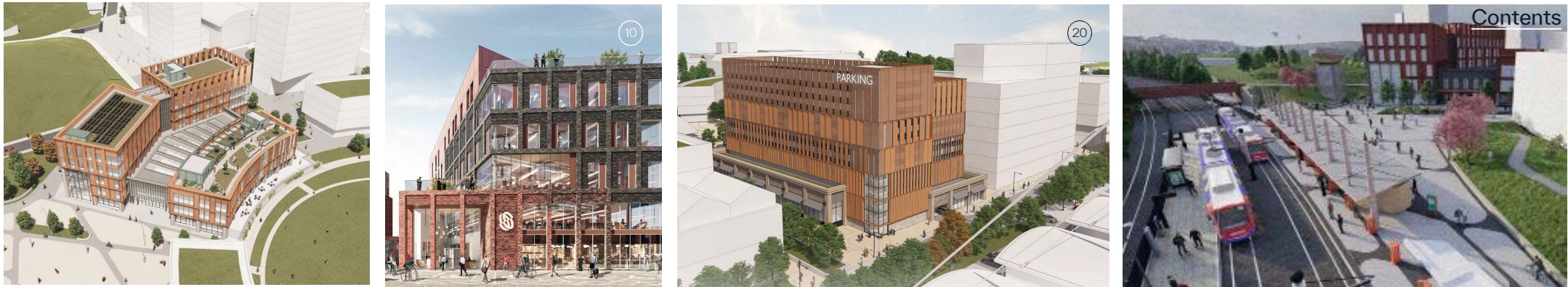
13

Keep Active

14

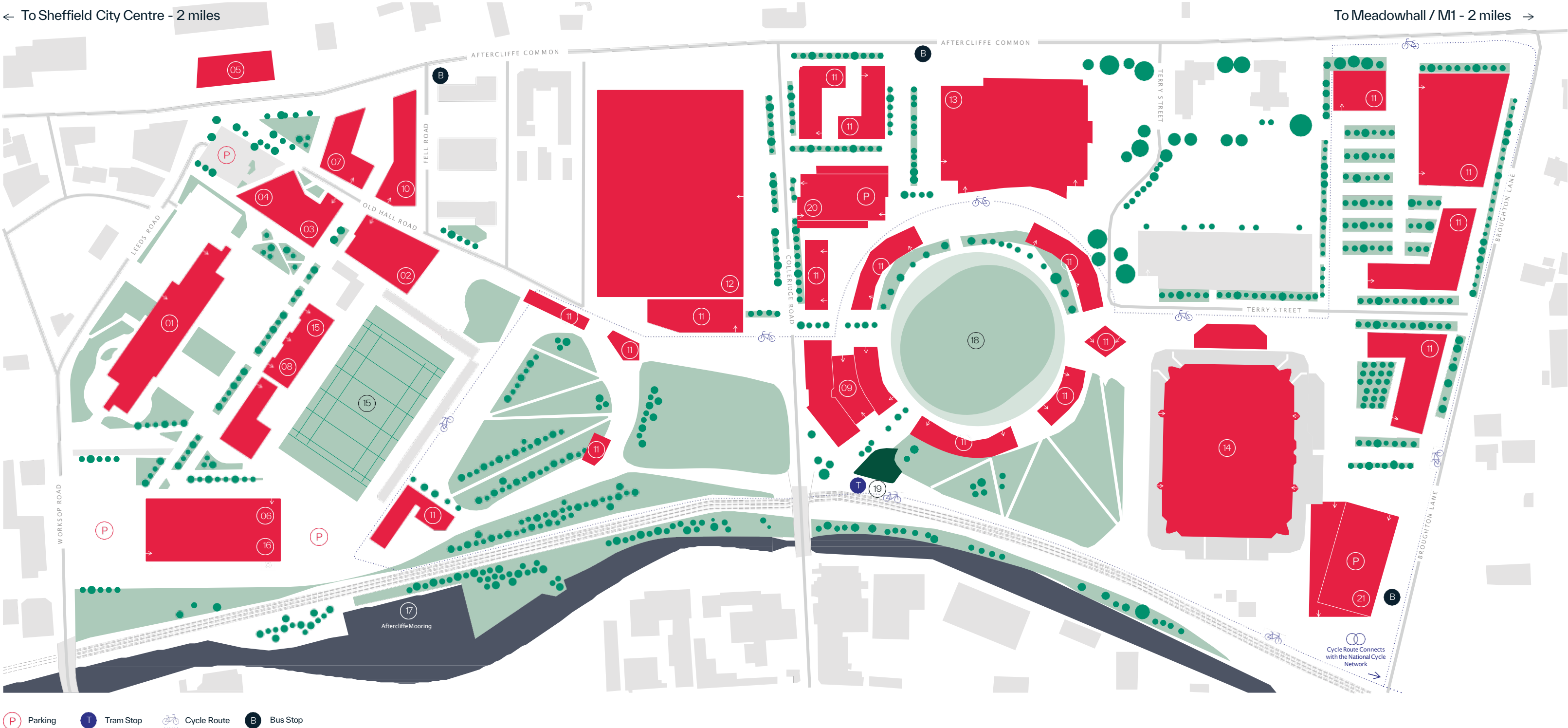
Masterplan

Sheffield Olympic Legacy Park spans over 80 acres.



- Education & Skills**
- 1. Oasis Academy Don Valley
 - 2. UTC Sheffield Olympic Legacy Park
- Research & Innovation**
- 3. Advanced Wellbeing Research Centre
 - 4. National Centre of Sport and Exercise Medicine
 - 5. National Centre of Excellence for Food Engineering
 - 6. LivingCare Medical Diagnostic Centre
 - 7. National Centre for Child Health Technology*
- Industry & Commerce**
- 8. Landing Pad by Blueprint
 - 9. Innovation Centre*
 - 10. Move-On Building*
 - 11. Future development plot
- Sports & Recreation**
- 12. English Institute of Sport Sheffield
 - 13. iceSheffield
 - 14. Utilita Arena Sheffield
 - 15. Community Stadium and 3G Pitch
 - 16. Canon Medical Arena
 - 17. Sheffield and Tinsley Canal Attercliffe Moorings
 - 18. Cricket Pitch
- Public Transport**
- 19. The Arena / Olympic Legacy Park tram stop
 - 20. Active Travel Hub 1*
 - 21. Active Travel Hub 2*

*Coming Soon



sheffieldolympiclegacypark.co.uk



—
Made to move.